



Navigation Center Informational Meetings

October 15, 2019

October 22, 2019





Doug Washburn
Director, Human Services

Kirsten Jewell
Manager, Housing and Homelessness Division



Brief Topics

- What is a Navigation Center?
- Who will it serve?
- Why do we need one?
- How does a Navigation Center fit into the larger plan to address homelessness?
- Where have other Navigation Centers been opened?
- Are they successful?
- What is the County's role?
- Audience questions and input

What is a Navigation Center?

- Homeless shelter
- 50-75 shelter beds
- Open 24/7
- On-site supportive services – case managers, mental health professionals, physical health providers, housing navigators, employment
- Allows pets, possessions, and partners (but not families with children)



Who will a Navigation Center serve?



- People experiencing homelessness
- Prioritized for the most vulnerable people with:
 - Mental health treatment needs
 - Substance uses disorders
 - Long-term homelessness
- People who otherwise will not be able to escape homelessness

What are the goals of a Navigation Center?

- Ensure safety
- Get people stabilized
- Build trust
- Offer treatment
- Connection with services
- Identify permanent housing options
- Assist with housing placement
- Get people off the street and into a safe environment
- Provide the tools to reach self-sufficiency



Why do we need a Navigation Center?

Across Kitsap County last year, **3,950** people needed help with housing

1 in 180 people in Kitsap County experienced unsheltered homelessness in 2018

More than **170** people are trying to survive outside each day.



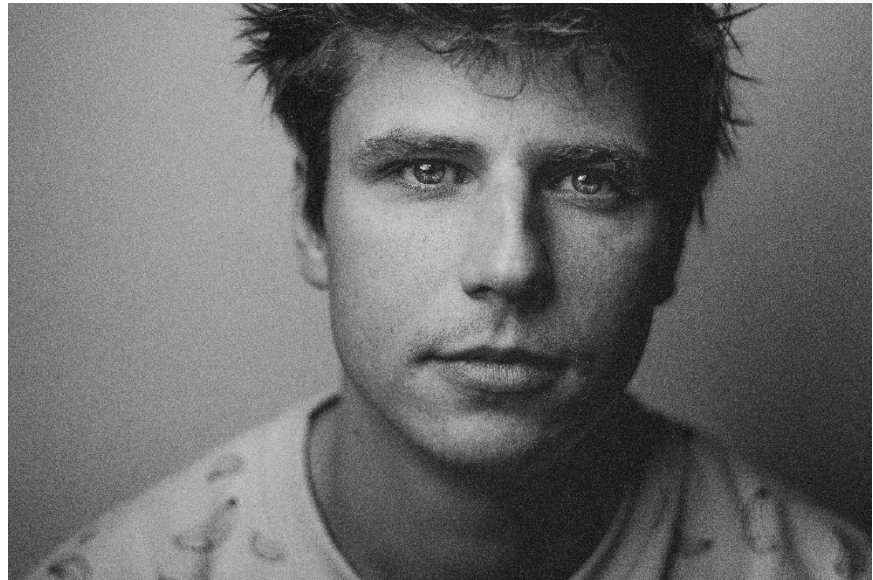
Why do we need a Navigation Center?

- Many people are successfully accessing shelter and getting housed
- Some people's mental health, substance use disorders, physical health, and chronic homelessness are preventing them from entering or being successful in existing shelters



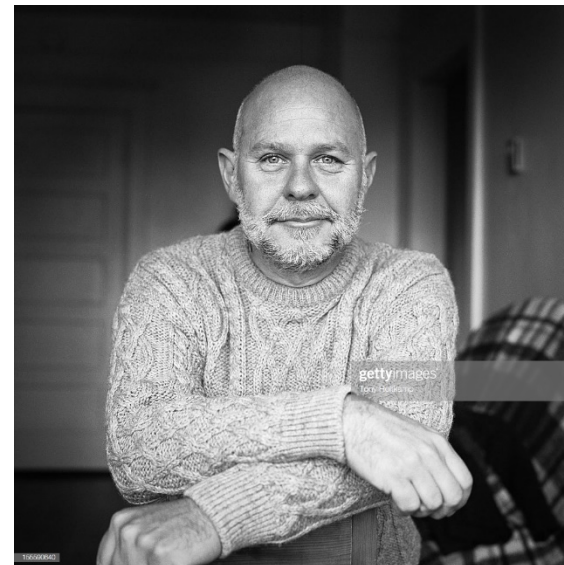
Why do we need a Navigation Center?

- Existing shelters do not have on-site wrap-around services
- People with high needs will not be successful without additional help
- Stable housing is essential for successful treatment



Why do we need a Navigation Center?

- New court cases affirm that all people have the right to be somewhere
- 9th Circuit Court: *“[A]s long as there is no option of sleeping indoors, the government cannot criminalize indigent, homeless people for sleeping outdoors, on public property, on the false premise they had a choice in the matter.”*
- Local governments can not arrest or make people leave public places if there are no available shelter beds



How does it fit into the homeless plan?

Kitsap Homeless Crisis Response & Housing Plan outlines our goals, core strategies, and new actions

- 1) Make homelessness **rare**
- 2) Make homelessness **brief**
- 3) Make homelessness **one time**
- 4) Continuously improve the homeless crisis response system
- 5) Expand community engagement

- Collective impact model
- National evidence-based practices
- Performance measurement



HEADING HOME

Kitsap Homeless Crisis Response
and Housing Plan

2018 Update

Released for Public Comment 4/26/18

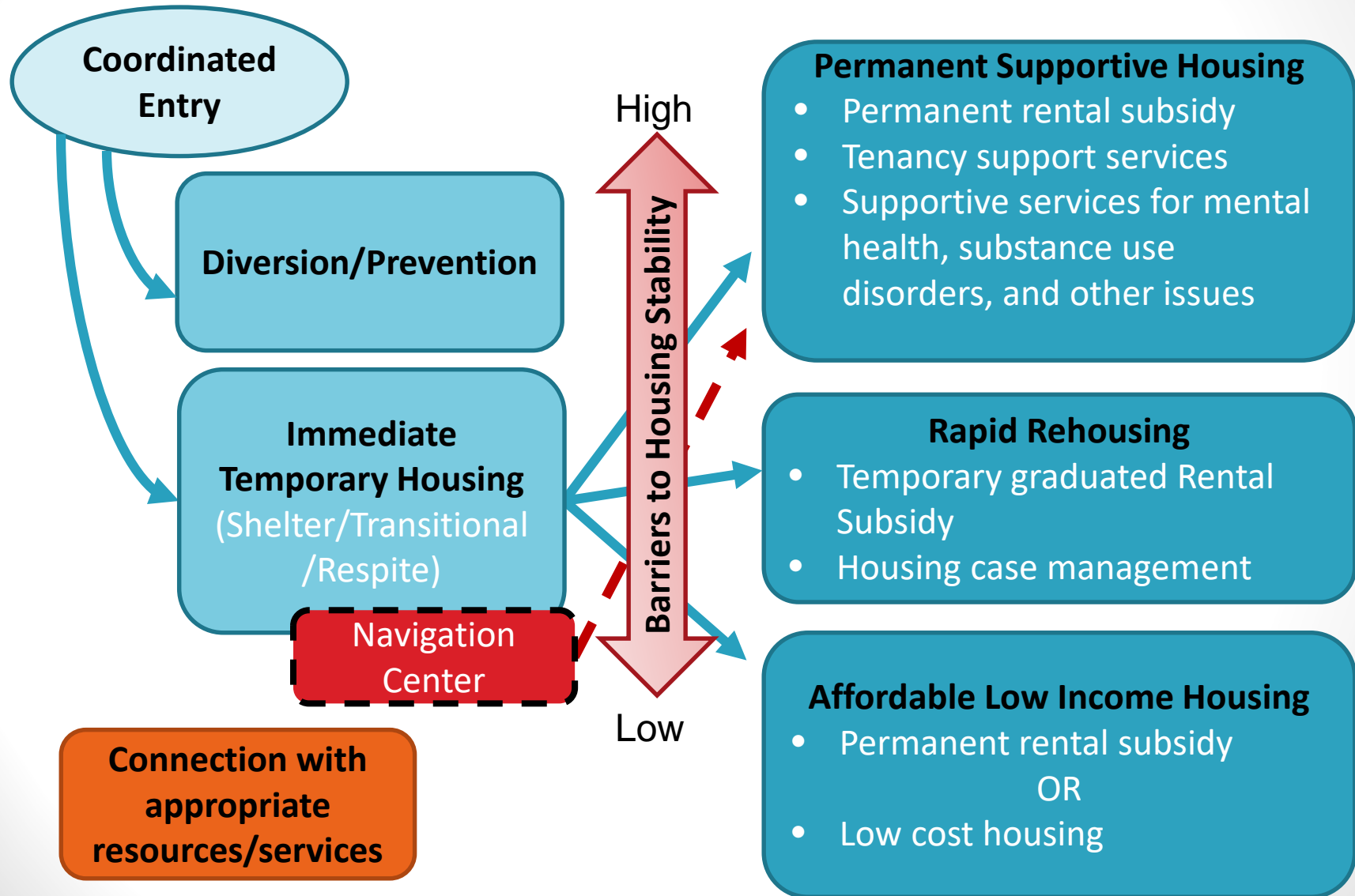


Kitsap County
Department of Human Services



Kitsap Housing and
Homelessness Coalition

Kitsap Homeless Crisis Response System



Kitsap Homeless Crisis Response & Housing Plan

New Focus in 2018 - 2019 Plan:

- Additional shelter beds to serve people with high needs/very vulnerable
- Respite shelter beds (for medically fragile)
- Permanent Supportive Housing (for people who need help paying rent & lots of help staying housed)
- Discharge planning from hospitals, jail, state systems of care
- Connections with employment & education

Where have other Navigation Centers been opened?



- Fremont, CA – in development
- Orange County, CA – in development
- Portland, OR – August 2019
- Vancouver, WA – November 2018
- Berkeley, CA – June 2018
- Seattle, WA – July 2017
- San Francisco, CA – March 2015

How much will it cost and how will it be funded?

Estimated Capital Budget:

- Site \$ 500,000
- Structure 400,000
- Construction 300,000
- Development/Soft Costs 155,000
- Total Capital Budget \$1,355,000

Targeted Capital Funding Sources:

- Foundation/Grant Requests \$ 1,000,000
- County Homeless Grant 95,929
- Other Local Sources 259,071
- Total Sources \$ 1,355,000



Estimated Ongoing Operations:

- Staffing, operations and maintenance expenses are expected to total \$1.2 - \$1.5M per year.
- HHG Grants, Private Foundations, Medicaid, 1/10th of 1%

What is the County's role?

- Public Outreach, Listening, Information
- Work with cities and tribes
- Provide partial funding through competitive process (Request for Proposals)
- Ensure legal permitting (if in county jurisdiction)
- Ensuring compliance with contract for services
- Data collection, reporting, evaluation



How will location be determined?

- Public Outreach for location suggestions
- Input from Providers and People Experiencing Homelessness
- Guidance from Cities, County and Tribes
- Law Enforcement Interviews



Everyone should have
the opportunity to live in
a safe, decent, affordable
home.





Todd Cooper



Questions?
Comments?
Input?

A home affords us the
freedom to flourish,
invest in our children,
and contribute to our
society.