



Kitsap County Social Service Sites

Legend

Kitsap Social Service Sites

Primary Services

- Social Services
- Food Bank
- Health
- Housing
- Legal
- Meals
- Mental Health
- Multiple Services
- Shelter
- Substance Abuse Treatment
- Veterans
- Youth Services

Kitsap County Census Block Group

Ratio of Households Above Poverty to Below
In the U.S. overall, there are 6.2 households living above the poverty line for every 1 household living below.

- Less than 7:1
A higher than normal number of households living below the poverty line compared to those above in that same area
- 7:1 to 12:1
- 13:1 to 25:1
- 26:1 to 50:1
- More than 50:1
A higher than normal number of households living above the poverty line compared to below poverty

- Kitsap Transit Routes
- Unincorporated Urban Growth Area
- Incorporated City
- Reservation Boundaries

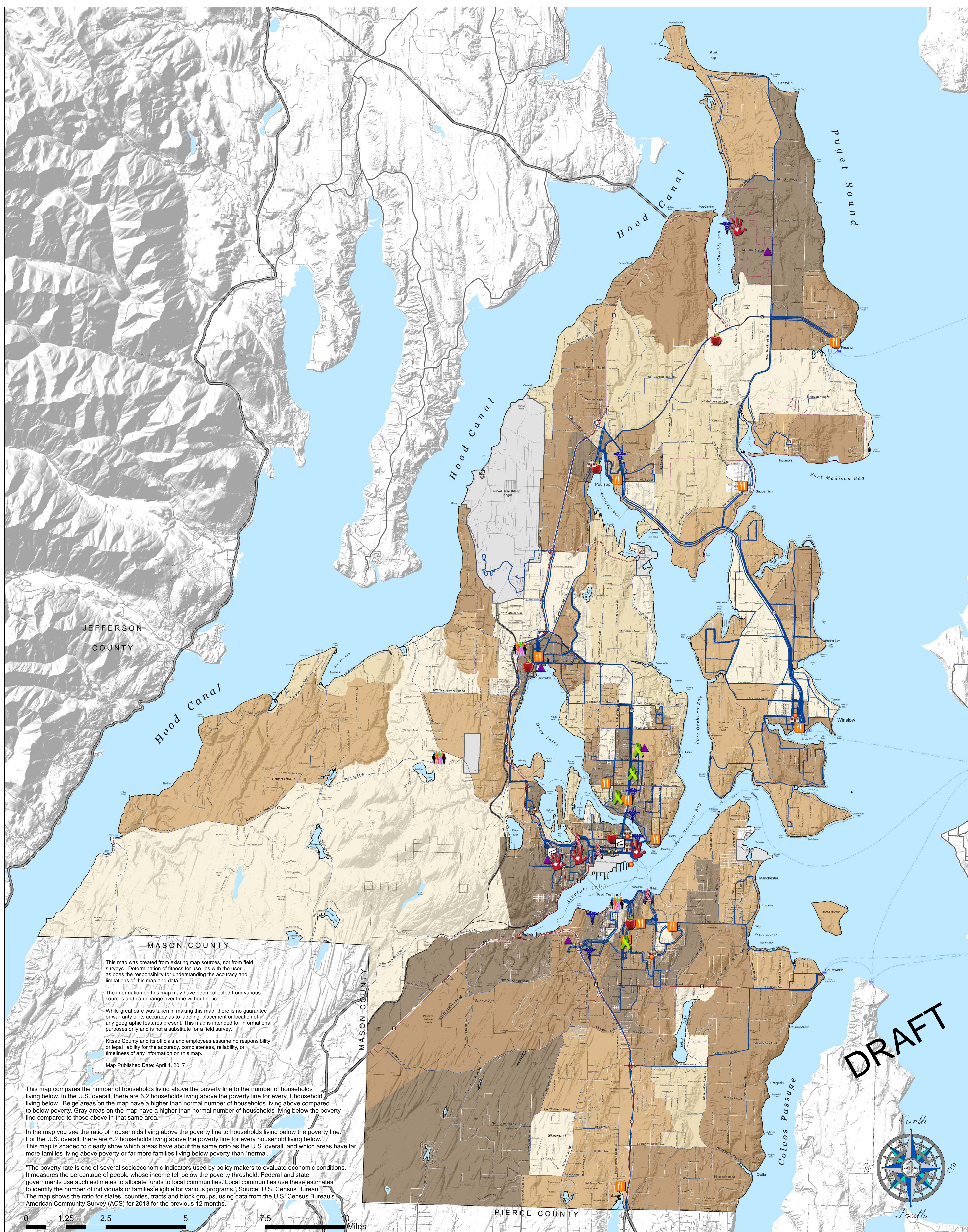
- ### Street Center Lines
- State Highway
 - Major Road
 - Collector / Arterial
 - Local Access; Local Road

- Railroad Lines
- Ferry Terminals
- Ferry Routes

- Military
- Greater Puget Sound Hydrology

Watercourses (defined in WAC 222-16-030)

Kitsap County Department of Community Development
614 Division Street, MS-36
Port Orchard, Washington 98366
VOICE (360) 337-5777 * FAX (360) 337-4925



This map was created from existing map sources, not from field surveys. Determination of fitness for use lies with the user, as does the responsibility for understanding the accuracy and limitations of this map and data.

The information on this map may have been collected from various sources and can change over time without notice.

While great care was taken in making this map, there is no guarantee or warranty of its accuracy as to labeling, placement or location of any geographic features present. This map is intended for informational purposes only and is not a substitute for a field survey.

Kitsap County and its officials and employees assume no responsibility or legal liability for the accuracy, completeness, reliability, or timeliness of any information on this map.

Map Published Date: April 4, 2017

This map compares the number of households living above the poverty line to the number of households living below. In the U.S. overall, there are 6.2 households living above the poverty line for every 1 household living below. Beige areas on the map have a higher than normal number of households living above compared to below poverty. Gray areas on the map have a higher than normal number of households living below the poverty line compared to those above in that same area.

In the map you see the ratio of households living above the poverty line to households living below the poverty line. For the U.S. overall, there are 6.2 households living above the poverty line for every household living below. This map is shaded to clearly show which areas have about the same ratio as the U.S. overall, and which areas have far more families living above poverty or far more families living below poverty than "normal."

The poverty rate is one of several socioeconomic indicators used by policy makers to evaluate economic conditions. It measures the percentage of people whose income fell below the poverty threshold. Federal and state governments use such estimates to allocate funds to local communities. Local communities use these estimates to identify the number of individuals or families eligible for various programs. Source: U.S. Census Bureau "The map shows the ratio for states, counties, tracts and block groups, using data from the U.S. Census Bureau's American Community Survey (ACS) for 2013 for the previous 12 months."



DRAFT

