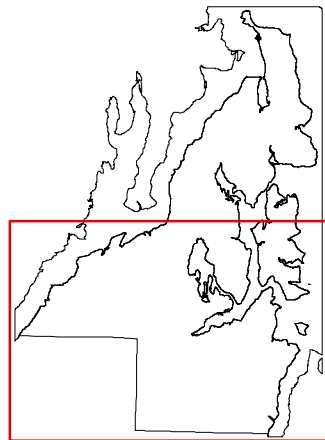


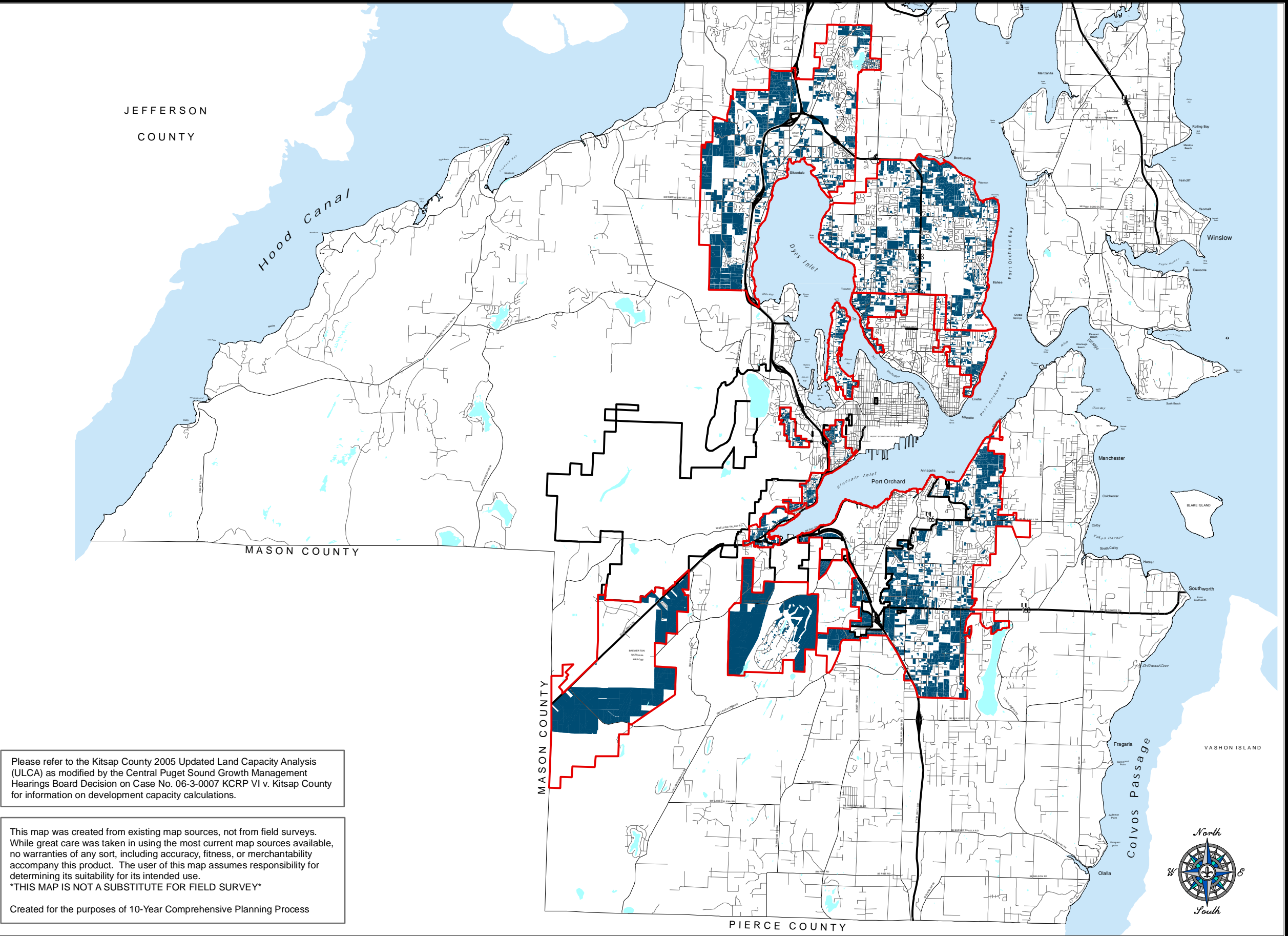
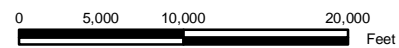
Southern Kitsap County

*Vacant and Underutilized Parcels
Within UGAs
Preferred Alternative*

- Vacant and Underutilized Parcels
- Incorporated City Limits
- Urban Growth Area Boundary



Map Date: November 20, 2006



Please refer to the Kitsap County 2005 Updated Land Capacity Analysis (ULCA) as modified by the Central Puget Sound Growth Management Hearings Board Decision on Case No. 06-3-0007 KCRP VI v. Kitsap County for information on development capacity calculations.

This map was created from existing map sources, not from field surveys. While great care was taken in using the most current map sources available, no warranties of any sort, including accuracy, fitness, or merchantability accompany this product. The user of this map assumes responsibility for determining its suitability for its intended use.
THIS MAP IS NOT A SUBSTITUTE FOR FIELD SURVEY

Created for the purposes of 10-Year Comprehensive Planning Process



Figure 3.2-2. Vacant and Underutilized Parcels Within UGAs - Preferred Alternative South