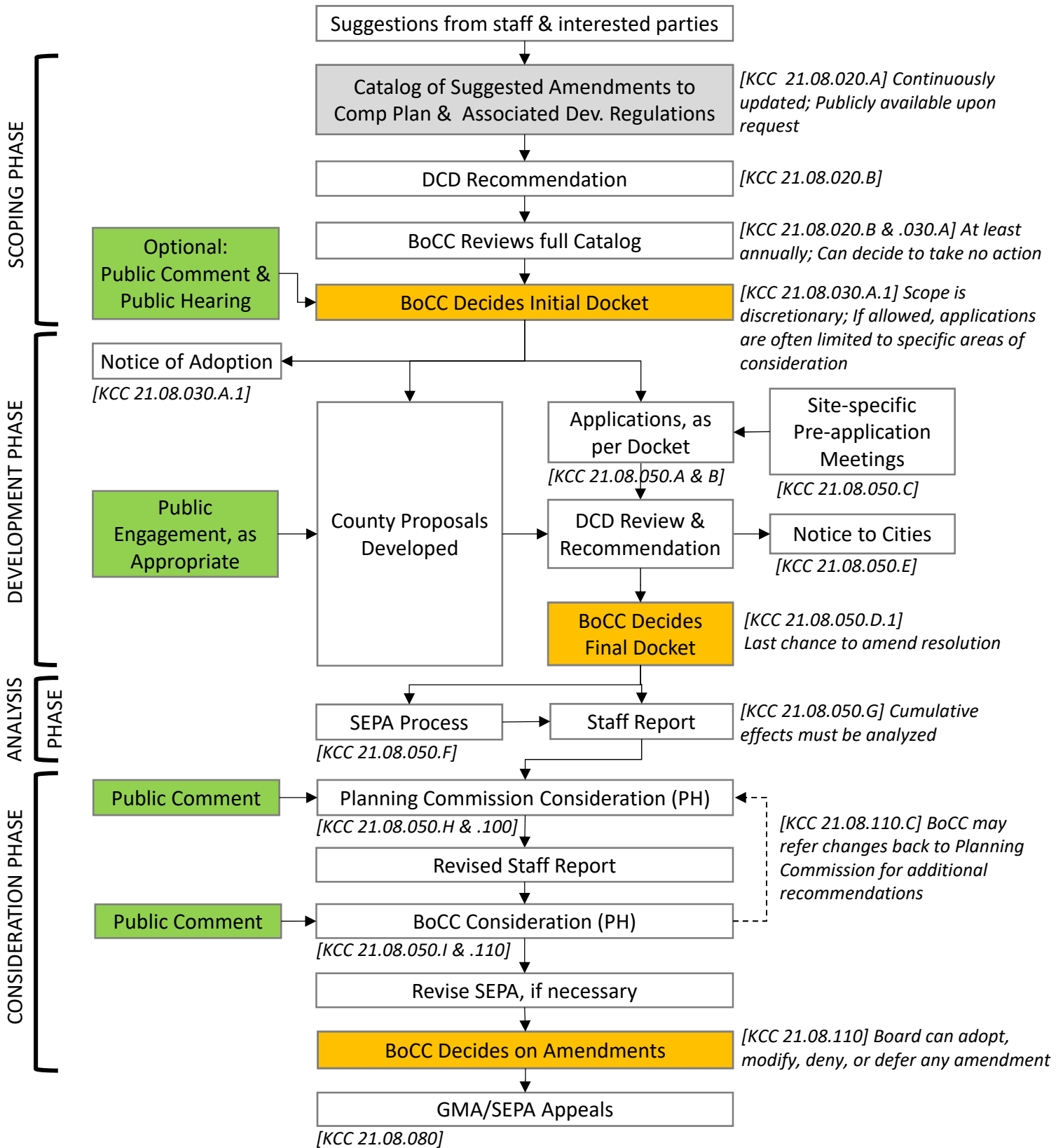


Summary of Current Comprehensive Plan Amendment Process



Other Notes:

- Process simplified for graphical clarity. SEPA process can vary.
- All Comp Plan amendments must be processed as a batch.
- Process does not apply to certain types of Comp Plan amendments [KCC 21.08.040.B]
- Process does not apply to adoption of Countywide Planning Policies.

BoCC: Board of County Commissioners
 DCD: Dept of Community Development
 DNS: Determination of Non-Significance
 GMA: Growth Management Act
 KCC: Kitsap County Code
 PH: Public Hearing
 SEPA: State Environmental Policy Act