

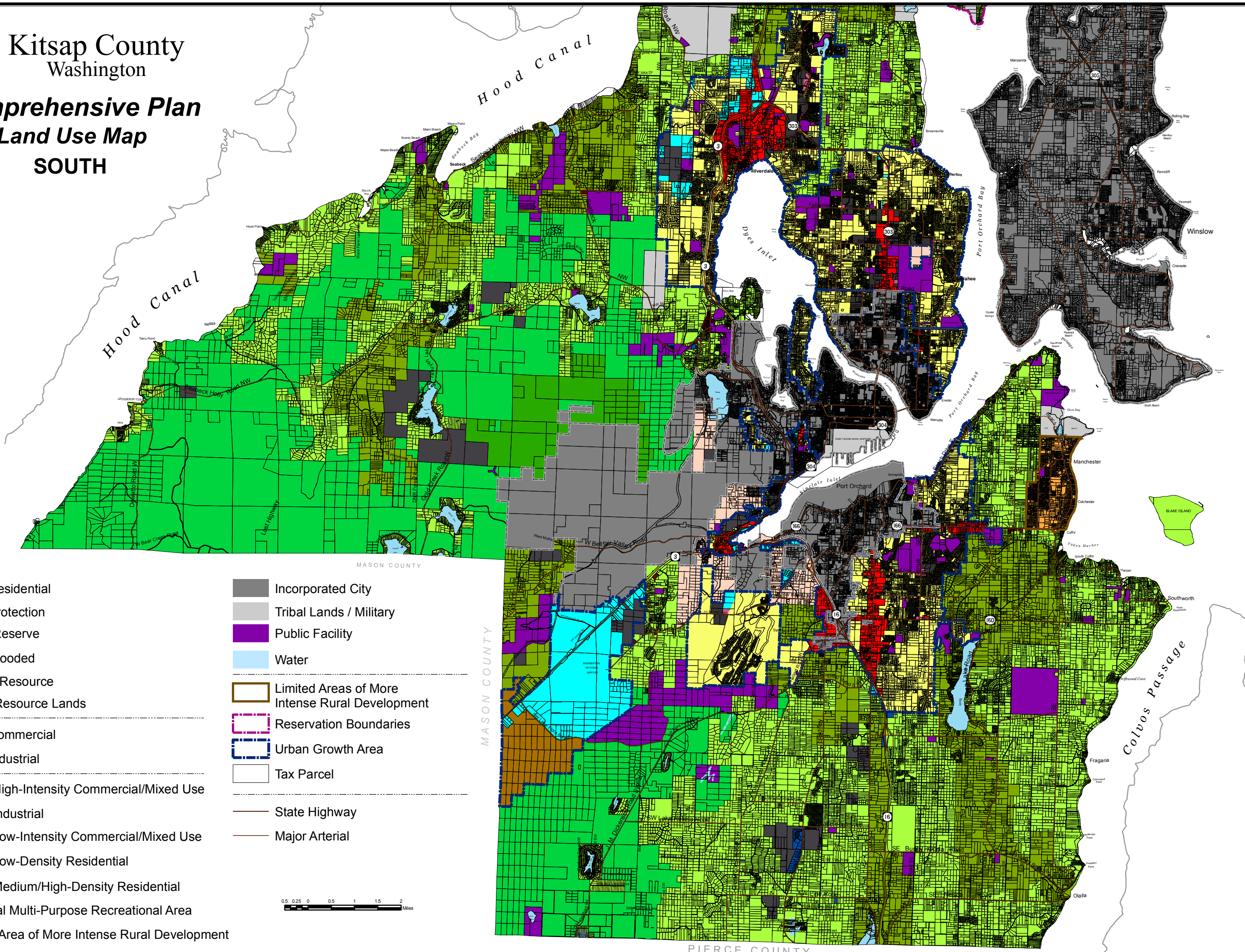


Kitsap County  
Washington

**Comprehensive Plan  
Land Use Map  
SOUTH**

Hood Canal

Hood Canal



- |  |  |  |   |
|--|--|--|---|
|  | Rural Residential                              |  | Incorporated City                               |
|  | Rural Protection                               |  | Tribal Lands / Military                         |
|  | Urban Reserve                                  |  | Public Facility                                 |
|  | Rural Wooded                                   |  | Water   |
|  | Mineral Resource                               |  | Limited Areas of More Intense Rural Development |
|  | Forest Resource Lands                          |  | Reservation Boundaries                          |
|  | Rural Commercial                               |  | Urban Growth Area                               |
|  | Rural Industrial                               |  | Tax Parcel                                      |
|  | Urban High-Intensity Commercial/Mixed Use      |  | State Highway                                   |
|  | Urban Industrial                               |  | Major Arterial                                  |
|  | Urban Low-Intensity Commercial/Mixed Use       |  |   |
|  | Urban Low-Density Residential                  |  |   |
|  | Urban Medium/High-Density Residential          |  |   |
|  | Industrial Multi-Purpose Recreational Area     |  |   |
|  | Limited Area of More Intense Rural Development |  |   |

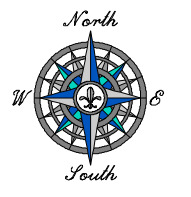
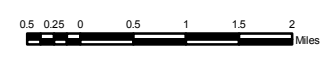


Figure 2.6-8 Comprehensive Plan Land Use Map-South