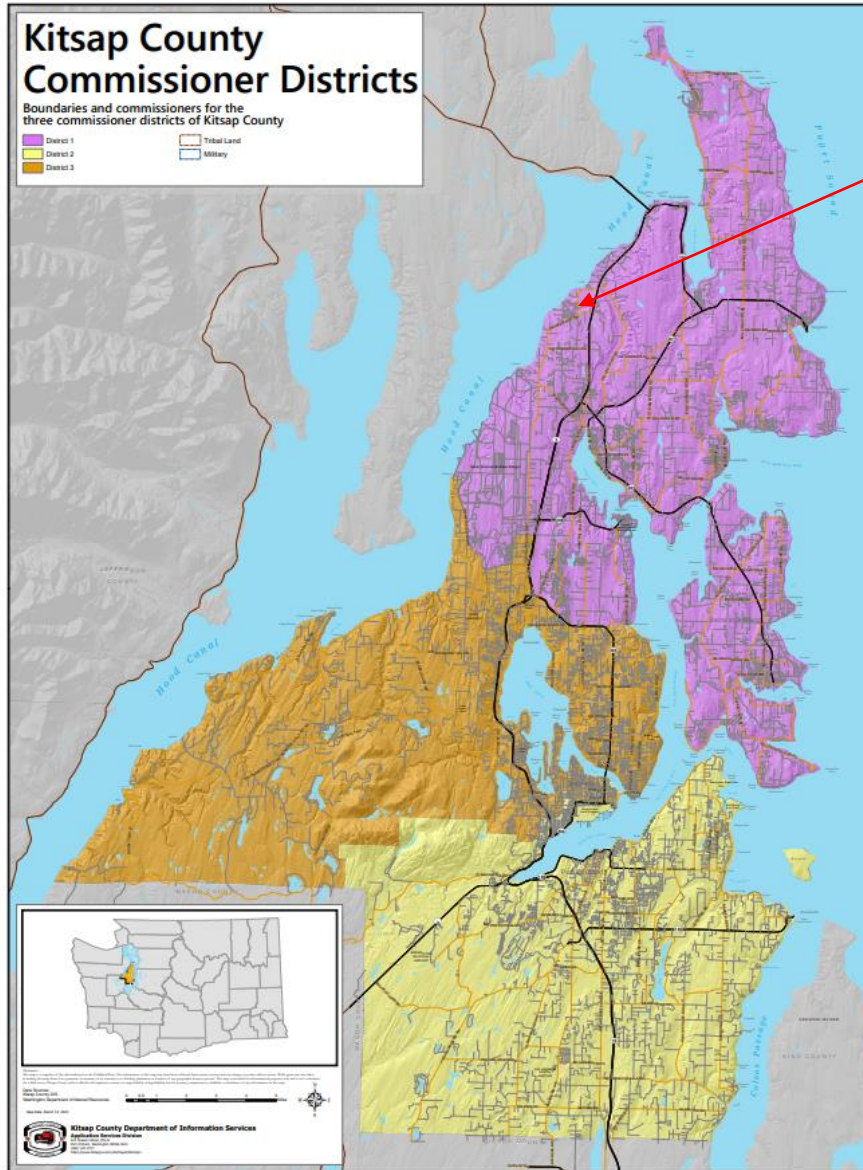

Kitsap County
Planning Commission

Open Space Application
#22-05890

LANE
September 19, 2023



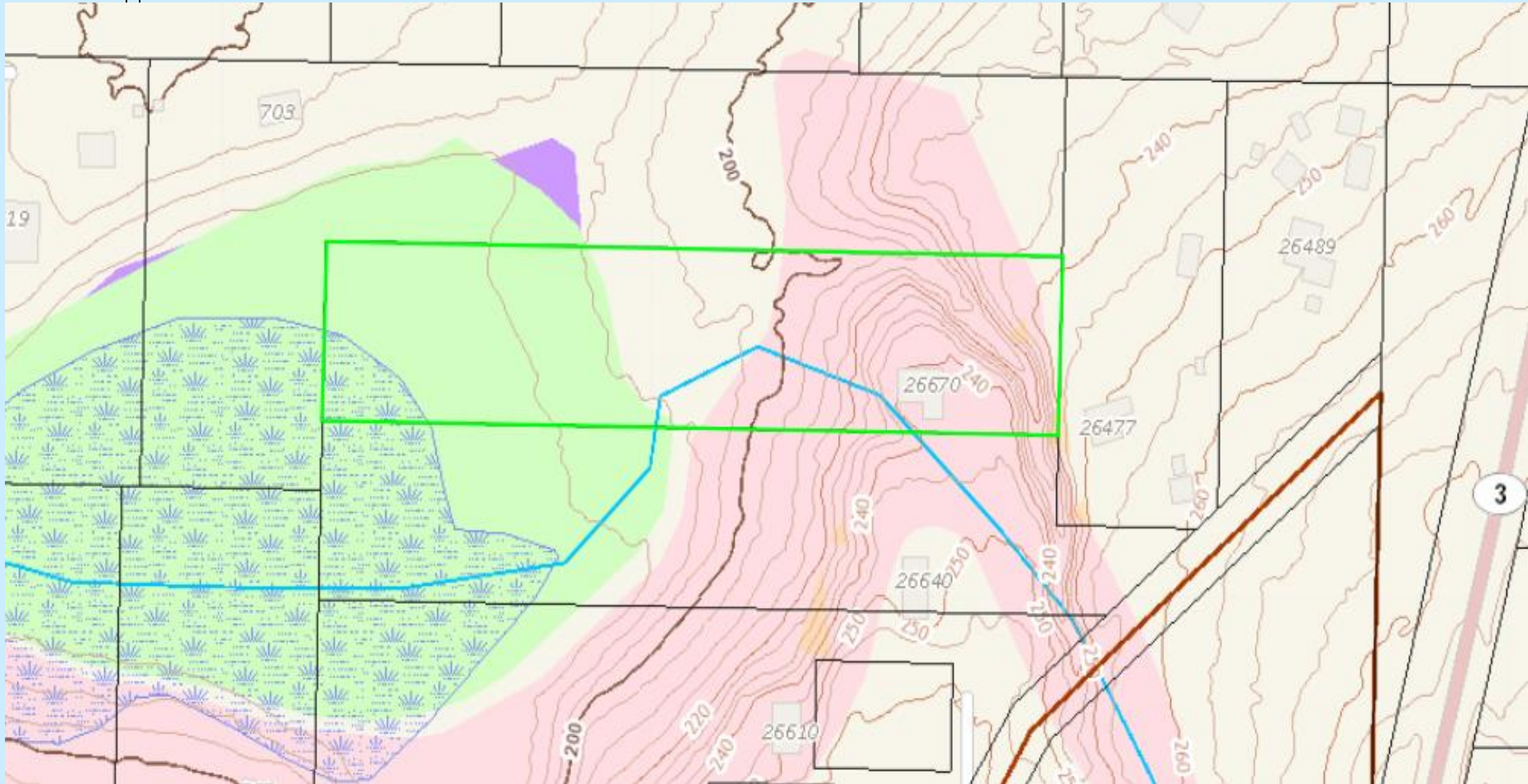
Lane Open Space



- Site location, 26670 Breidablick Pl. N.W. Poulsbo, WA.
- 272701-1-050-2000
- Commissioner District 1 (purple)
- 4.2 acres



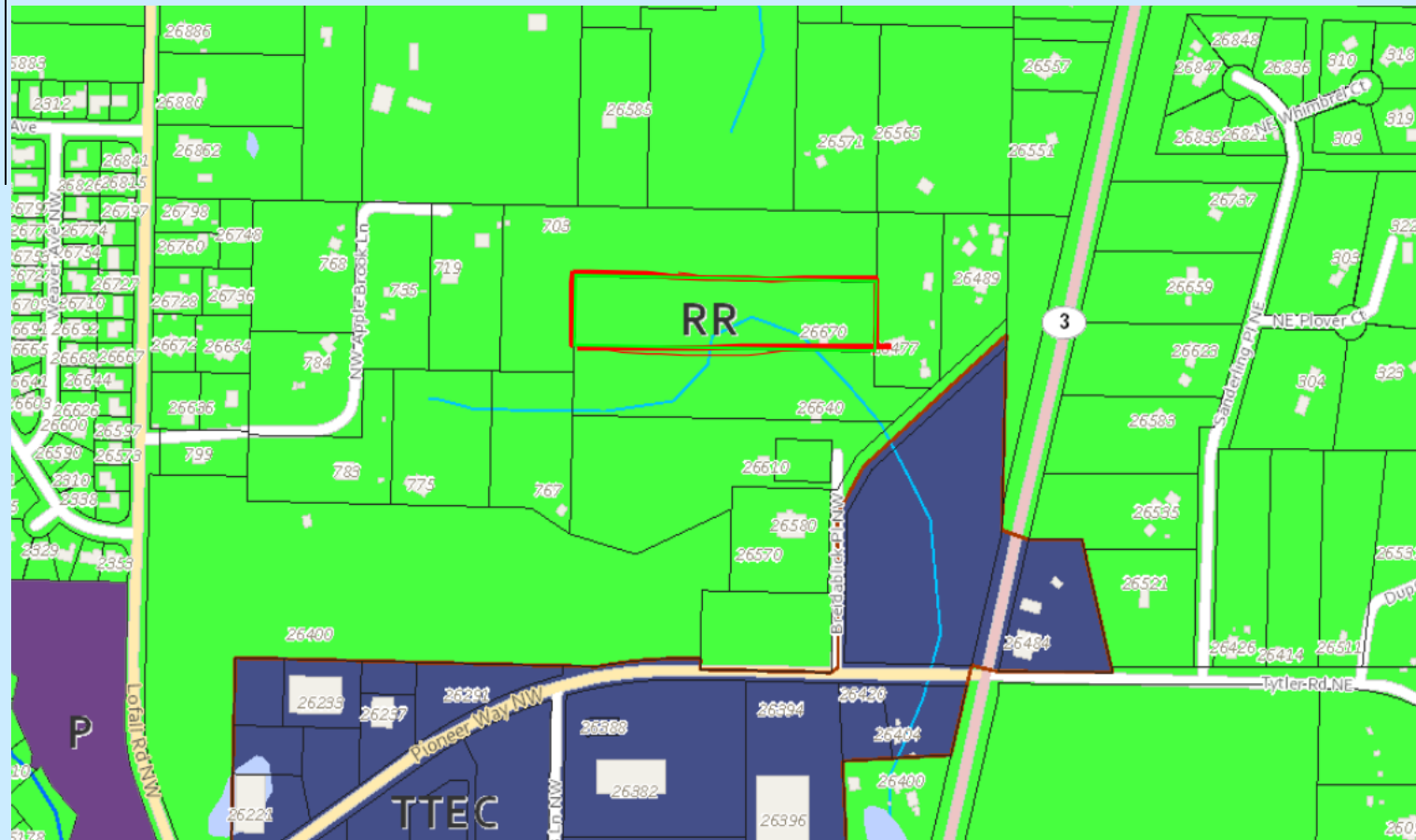
Lane Open Space



CAO Map

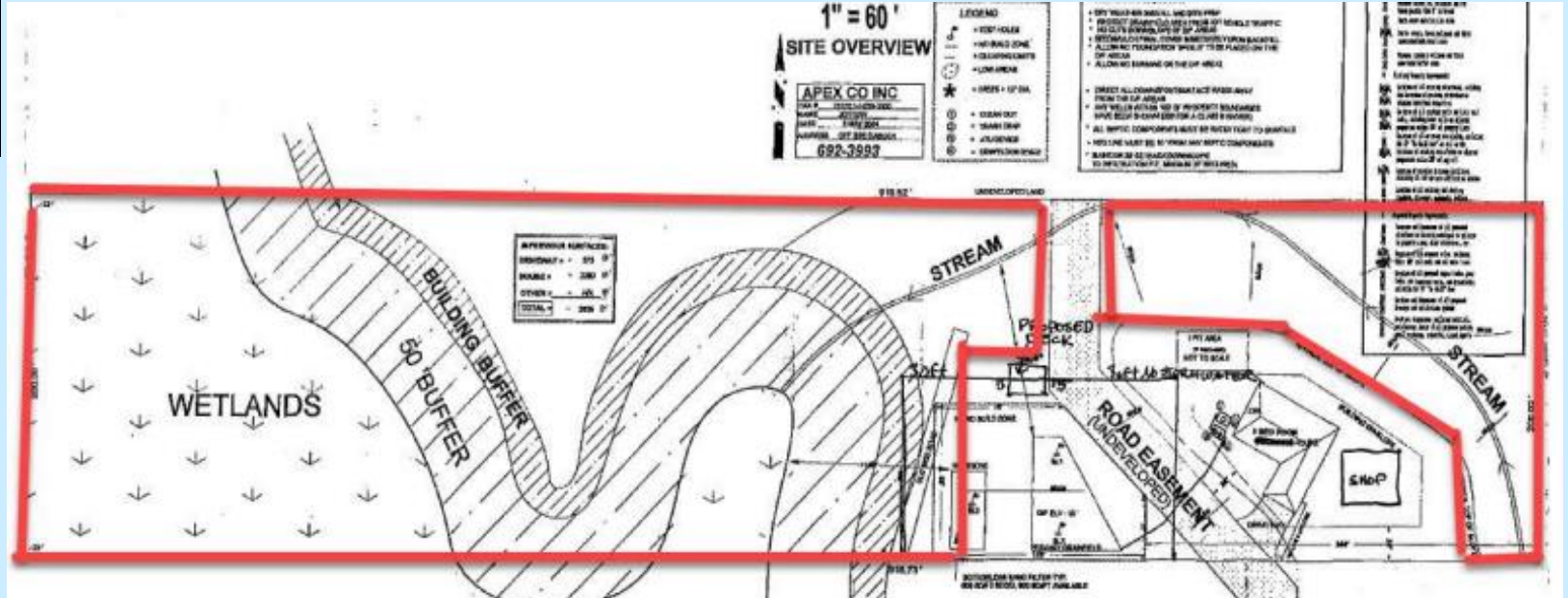


Lane Open Space

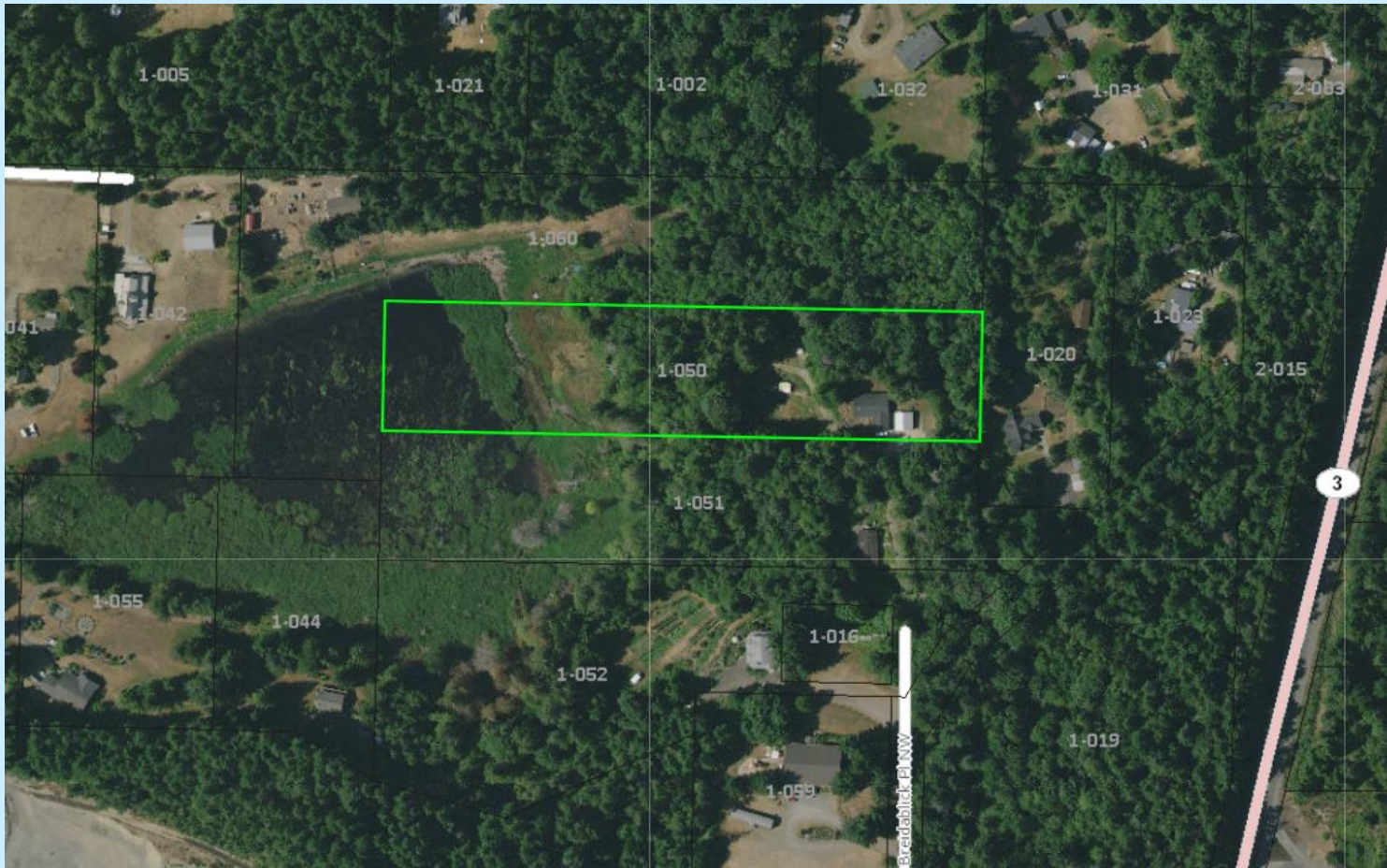


- Rural Residential (RR) zoning
- 1 DU/5 acres

Lane Open Space



Lane Open Space



Kitsap County Aerial Photo 2021



Lane Open Space



Lane Open Space

Pursuant to RCW 84.34.020 and KCC 18.12.020(C)

High-Priority Resources:

- Wetlands, Ponds and Streams
- Watersheds
- Conservation Easement

Medium-Priority Resources:

- None

Low-Priority Resources:

- Preservation of visual quality

- 80% tax reduction
- Public access option



Lane Open Space



Approval of the application will result in an annual tax decrease of ~\$359

Lane Open Space



Lane Open Space



Lane Open Space



- Wetland
- Frogs
 - Vegetation

Questions

Kitsap County Planning Commission

Open Space Application
#22-05890

LANE
September 19, 2023

[Jenny Kreifels, DCD Planner: jkreifels@kitsap.gov](mailto:jkreifels@kitsap.gov)

