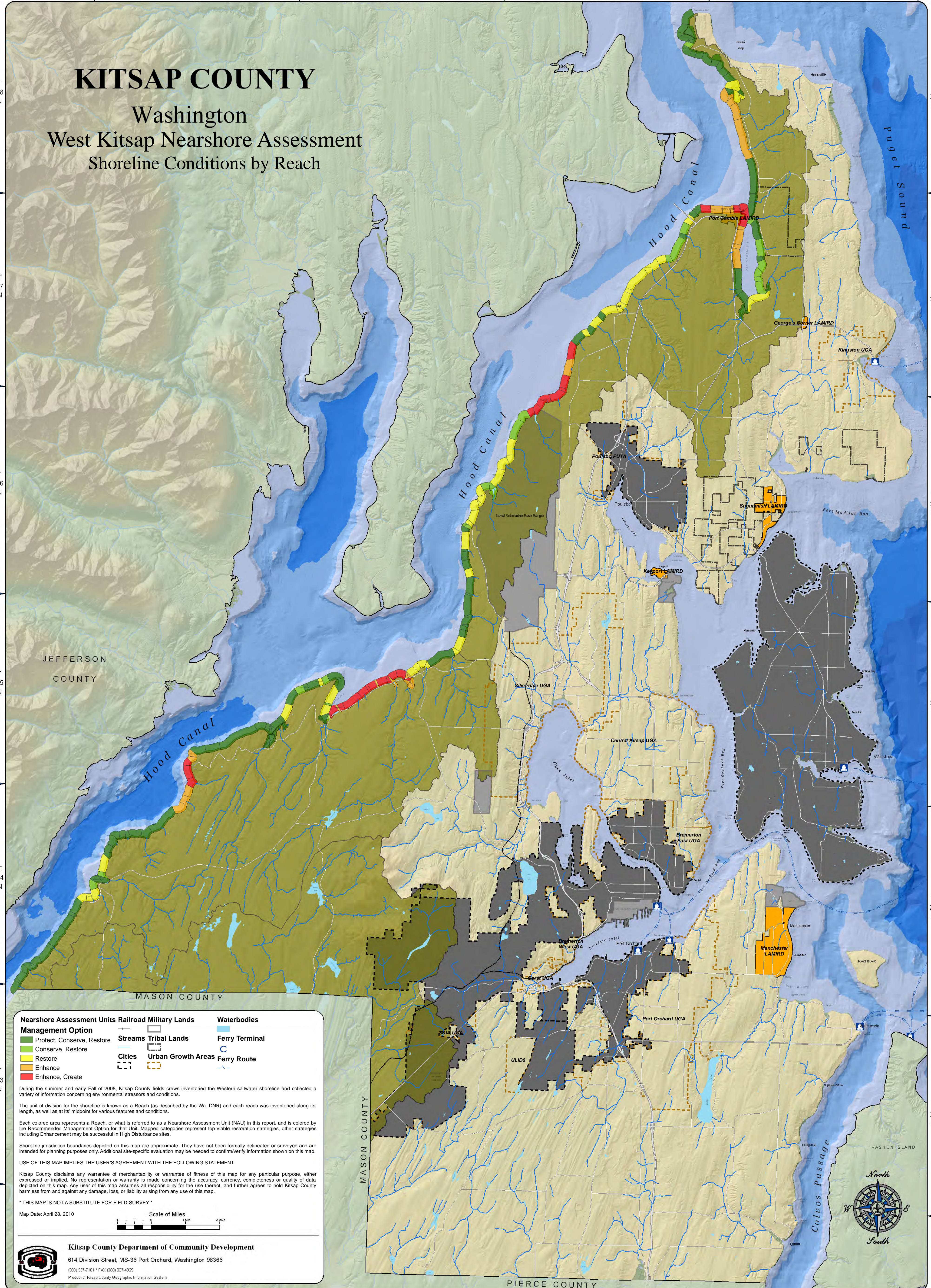


KITSAP COUNTY

Washington West Kitsap Nearshore Assessment Shoreline Conditions by Reach



Nearshore Assessment Units	Railroad	Military Lands	Waterbodies
Management Option	Railroad	Military Lands	Waterbodies
Protect, Conserve, Restore	Streams	Tribal Lands	Ferry Terminal
Conserve, Restore	Cities	Urban Growth Areas	Ferry Route
Restore			
Enhance			
Enhance, Create			

During the summer and early Fall of 2008, Kitsap County fields crews inventoried the Western saltwater shoreline and collected a variety of information concerning environmental stressors and conditions.

The unit of division for the shoreline is known as a Reach (as described by the Wa. DNR) and each reach was inventoried along its' length, as well as at its' midpoint for various features and conditions.

Each colored area represents a Reach, or what is referred to as a Nearshore Assessment Unit (NAU) in this report, and is colored by the Recommended Management Option for that Unit. Mapped categories represent top viable restoration strategies, other strategies including Enhancement may be successful in High Disturbance sites.

Shoreline jurisdiction boundaries depicted on this map are approximate. They have not been formally delineated or surveyed and are intended for planning purposes only. Additional site-specific evaluation may be needed to confirm/verify information shown on this map.

USE OF THIS MAP IMPLIES THE USER'S AGREEMENT WITH THE FOLLOWING STATEMENT:

Kitsap County disclaims any warranty of merchantability or warranty of fitness of this map for any particular purpose, either expressed or implied. No representation or warranty is made concerning the accuracy, currency, completeness or quality of data depicted on this map. Any user of this map assumes all responsibility for the use thereof, and further agrees to hold Kitsap County harmless from and against any damage, loss, or liability arising from any use of this map.

*** THIS MAP IS NOT A SUBSTITUTE FOR FIELD SURVEY ***

Map Date: April 28, 2010

Scale of Miles
0 1 2 Miles

Kitsap County Department of Community Development
614 Division Street, MS-36 Port Orchard, Washington 98366
(800) 337-7181 * FAX (800) 337-4925
Product of Kitsap County Geographic Information System

