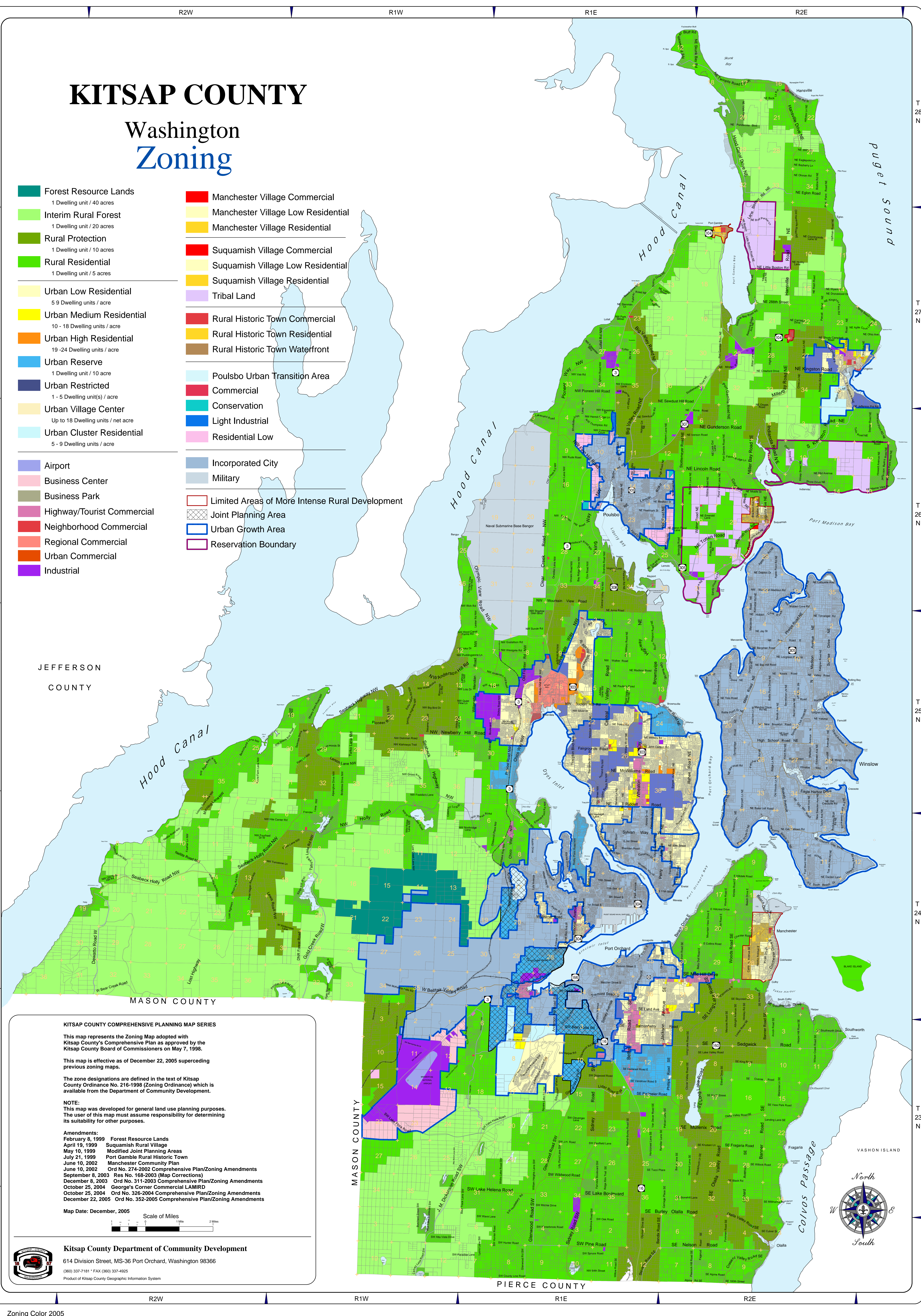


KITSAP COUNTY

Washington Zoning

	Forest Resource Lands 1 Dwelling unit / 40 acres		Manchester Village Commercial
	Interim Rural Forest 1 Dwelling unit / 20 acres		Manchester Village Low Residential
	Rural Protection 1 Dwelling unit / 10 acres		Manchester Village Residential
	Rural Residential 1 Dwelling unit / 5 acres		Suquamish Village Commercial
	Urban Low Residential 5-9 Dwelling units / acre		Suquamish Village Low Residential
	Urban Medium Residential 10-18 Dwelling units / acre		Suquamish Village Residential
	Urban High Residential 19-24 Dwelling units / acre		Tribal Land
	Urban Reserve 1 Dwelling unit / 10 acre		Rural Historic Town Commercial
	Urban Restricted 1-5 Dwelling unit(s) / acre		Rural Historic Town Residential
	Urban Village Center Up to 18 Dwelling units / net acre		Rural Historic Town Waterfront
	Urban Cluster Residential 5-9 Dwelling units / acre		Poulsbo Urban Transition Area
	Airport		Commercial
	Business Center		Conservation
	Business Park		Light Industrial
	Highway/Tourist Commercial		Residential Low
	Neighborhood Commercial		Incorporated City
	Regional Commercial		Military
	Urban Commercial		Limited Areas of More Intense Rural Development
	Industrial		Joint Planning Area
			Urban Growth Area
			Reservation Boundary



KITSAP COUNTY COMPREHENSIVE PLANNING MAP SERIES

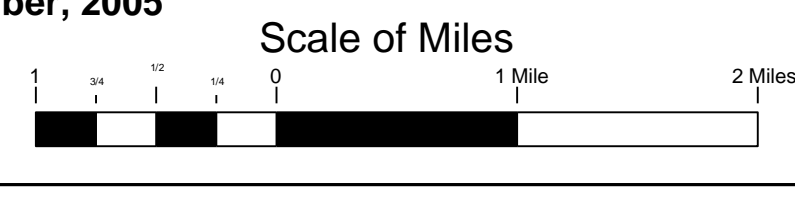
This map represents the Zoning Map adopted with Kitsap County's Comprehensive Plan as approved by the Kitsap County Board of Commissioners on May 7, 1998.

This map is effective as of December 22, 2005 superceding previous zoning maps.

The zone designations are defined in the text of Kitsap County Ordinance No. 216-1998 (Zoning Ordinance) which is available from the Department of Community Development.

NOTE:
This map was developed for general land use planning purposes. The user of this map must assume responsibility for determining its suitability for other purposes.

Amendments:
 February 8, 1999 Forest Resource Lands
 April 19, 1999 Suquamish Rural Village
 May 10, 1999 Modified Joint Planning Areas
 July 21, 1999 Port Gamble Rural Historic Town
 June 10, 2002 Manchester Community Plan
 June 10, 2002 Ord No. 274-2002 Comprehensive Plan/Zoning Amendments
 September 8, 2003 Res No. 168-2003 (Map Corrections)
 December 8, 2003 Ord No. 311-2003 Comprehensive Plan/Zoning Amendments
 October 25, 2004 George's Corner Commercial LAMRO
 October 25, 2004 Ord No. 326-2004 Comprehensive Plan/Zoning Amendments
 December 22, 2005 Ord No. 352-2005 Comprehensive Plan/Zoning Amendments



Kitsap County Department of Community Development
 614 Division Street, MS-36 Port Orchard, Washington 98366
 (360) 337-7181 • FAX (360) 337-4925
 Product of Kitsap County Geographic Information System

