

Zoning KITSAP COUNTY Washington

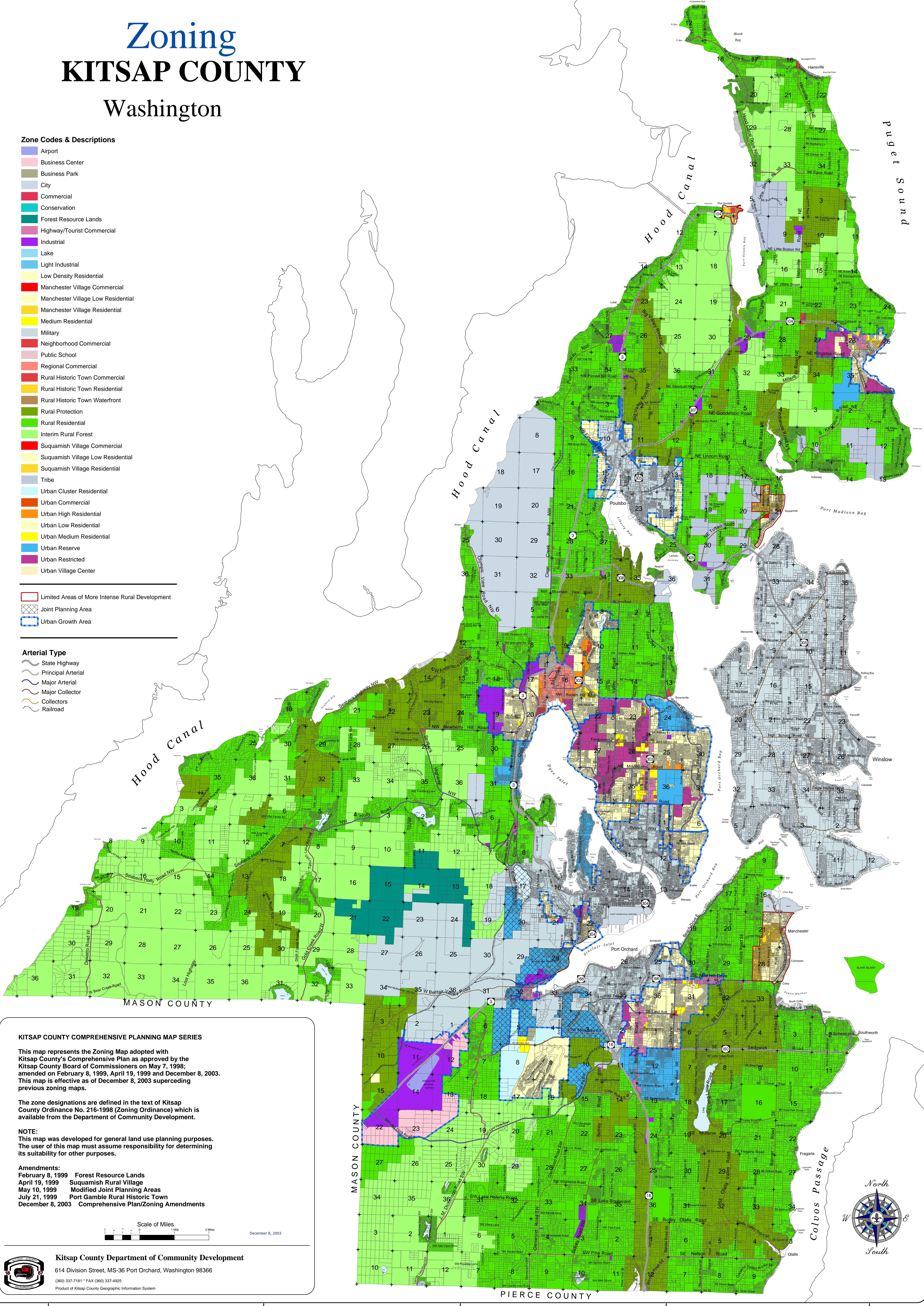
Zone Codes & Descriptions

- Airport
- Business Center
- Business Park
- City
- Commercial
- Conservation
- Forest Resource Lands
- Highway/Tourist Commercial
- Industrial
- Lake
- Light Industrial
- Low Density Residential
- Manchester Village Commercial
- Manchester Village Low Residential
- Manchester Village Residential
- Medium Residential
- Military
- Neighborhood Commercial
- Public School
- Regional Commercial
- Rural Historic Town Commercial
- Rural Historic Town Residential
- Rural Historic Town Waterfront
- Rural Protection
- Rural Residential
- Interim Rural Forest
- Suquamish Village Commercial
- Suquamish Village Low Residential
- Suquamish Village Residential
- Tribe
- Urban Cluster Residential
- Urban Commercial
- Urban High Residential
- Urban Low Residential
- Urban Medium Residential
- Urban Reserve
- Urban Restricted
- Urban Village Center

- Limited Areas of More Intense Rural Development
- Joint Planning Area
- Urban Growth Area

Arterial Type

- State Highway
- Principal Arterial
- Major Arterial
- Major Collector
- Collectors
- Railroad



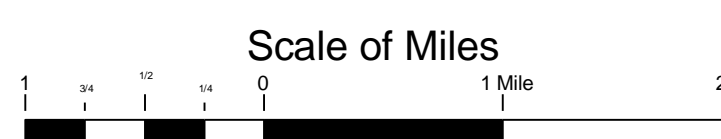
KITSAP COUNTY COMPREHENSIVE PLANNING MAP SERIES

This map represents the Zoning Map adopted with Kitsap County's Comprehensive Plan as approved by the Kitsap County Board of Commissioners on May 7, 1998; amended on February 8, 1999, April 19, 1999 and December 8, 2003. This map is effective as of December 8, 2003 superceding previous zoning maps.

The zone designations are defined in the text of Kitsap County Ordinance No. 216-1998 (Zoning Ordinance) which is available from the Department of Community Development.

NOTE:
This map was developed for general land use planning purposes. The user of this map must assume responsibility for determining its suitability for other purposes.

- Amendments:**
- February 8, 1999 Forest Resource Lands
 - April 19, 1999 Suquamish Rural Village
 - May 10, 1999 Modified Joint Planning Areas
 - July 21, 1999 Port Gamble Rural Historic Town
 - December 8, 2003 Comprehensive Plan/Zoning Amendments



December 8, 2003



Kitsap County Department of Community Development
614 Division Street, MS-36 Port Orchard, Washington 98366
(360) 337-7181 • FAX (360) 337-4925
Product of Kitsap County Geographic Information System

