

Water Resource Inventory

Area 15 Watersheds

KITSAP COUNTY

Washington

Description:
Abstract:
 Water Resource Inventory Areas (WRIA) for Washington State at 1:24,000 scale. WRIAs were formalized under WAC 173-500-040 and authorized under the Water Resources Act of 1971, RCW 90.54. Ecology was given the responsibility for the development and management of these administrative and planning boundaries. These boundaries represent the administrative underpinning of this agency's business activities. The original WRIA boundary agreements and judgments were reached jointly by Washington's natural resource agencies (Ecology, Natural Resources, Fish and Wildlife) in 1970.
Purpose:
 To create a WRIA coverage at a scale of 1:24,000 through the updating of two "like" data sets from different sources. Additionally, to address discrepancies found between the two coverages and determine a "best fit" line through several stages of visual analysis. The development process identified several major objectives as reasoning to update the digital data coverage: To improve the spatial resolution of the data set, to align the WRIA boundaries with 1:24,000 scale hydrology and topography data, to insure the alignment of the WRIA boundaries to existing county and state boundaries where appropriate, and to have one reconciled set of administrative watershed boundaries (i.e. WADNR's boundaries to nest within the WRIA boundaries).

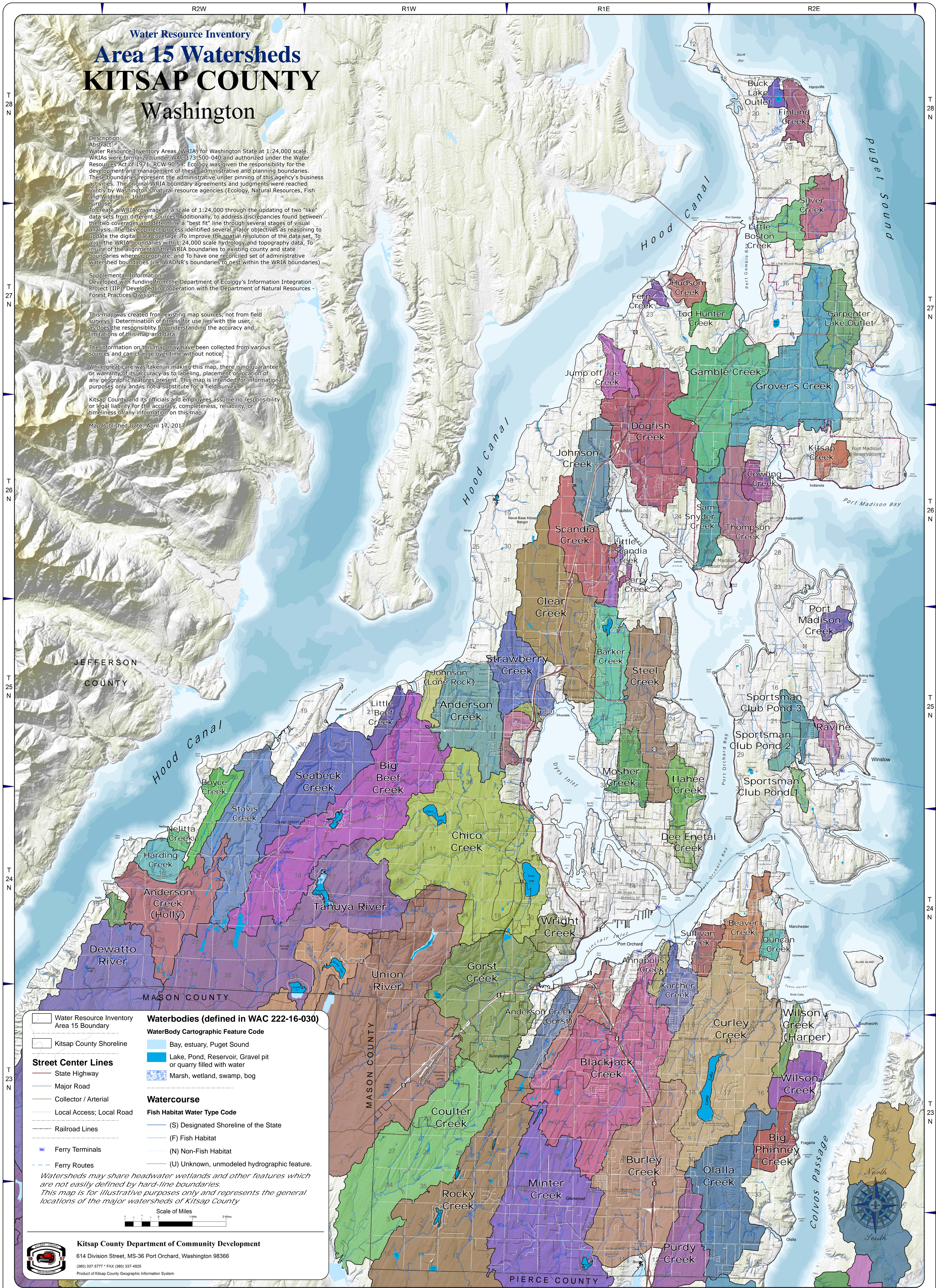
Supplemental Information:
 Developed with funding from the Department of Ecology's Information Integration Project (IIP). Developed in cooperation with the Department of Natural Resources - Forest Practices Division.

This map was created from existing map sources, not from field surveys. Determination of fitness for use lies with the user, as does the responsibility for understanding the accuracy and limitations of this map and data.

The information on this map may have been collected from various sources and can change over time without notice.
 While great care was taken in making this map, there is no guarantee or warranty of its accuracy as to labeling, placement or location of any geographic features present. This map is intended for informational purposes only and is not a substitute for a field survey.

Kitsap County and its officials and employees assume no responsibility or legal liability for the accuracy, completeness, reliability, or timeliness of any information on this map.

Map Published Date: April 17, 2017



	Water Resource Inventory Area 15 Boundary		Waterbodies (defined in WAC 222-16-030)
	Kitsap County Shoreline		Bay, estuary, Puget Sound
	Street Center Lines		Lake, Pond, Reservoir, Gravel pit or quarry filled with water
	State Highway		Marsh, wetland, swamp, bog
	Major Road		Watercourse
	Collector / Arterial		Fish Habitat Water Type Code
	Local Access; Local Road		(S) Designated Shoreline of the State
	Railroad Lines		(F) Fish Habitat
	Ferry Terminals		(N) Non-Fish Habitat
	Ferry Routes		(U) Unknown, unmodeled hydrographic feature.

Watersheds may share headwater wetlands and other features which are not easily defined by hard-line boundaries. This map is for illustrative purposes only and represents the general locations of the major watersheds of Kitsap County

Scale of Miles
 0 0.5 1 1.5 2 Miles

Kitsap County Department of Community Development
 614 Division Street, MS-36 Port Orchard, Washington 98366
 (360) 337-6777 • FAX: (360) 337-4925
 Product of Kitsap County Geographic Information System

