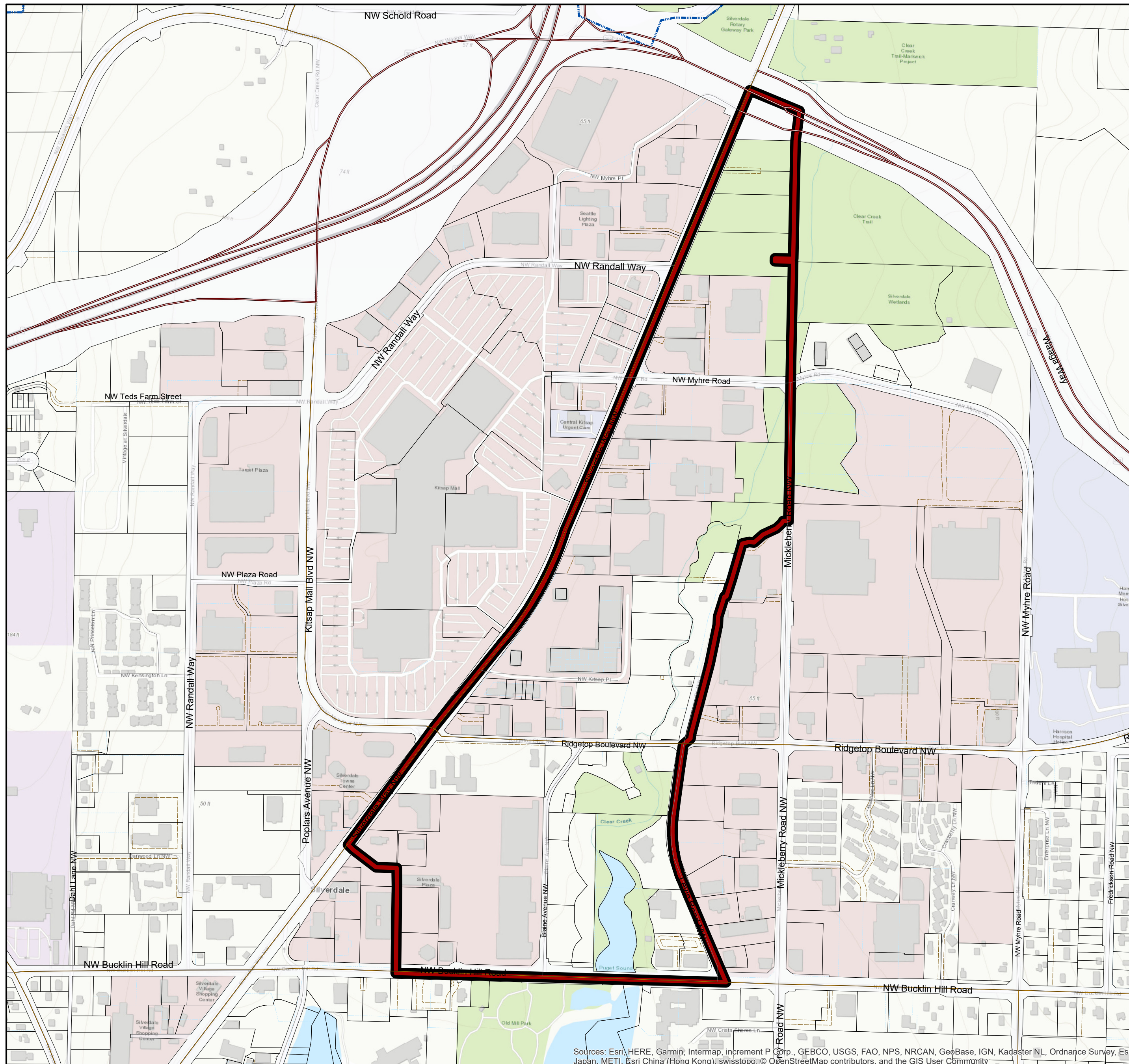



# Silverdale Design District - Clear Creek Village



### Legend

- Clear Creek Village
- Designated Urban Growth Areas
- Real Property Tax Accounts
- Easement
- Plat Line
- Street Center Lines**
  - State Highway
  - Collector / Arterial
  - Local Access; Local Road



Kitsap County Department of Community Development  
 614 Division Street, MS-36, Port Orchard, Washington 98366  
 VOICE (360) 337-5777 \* <https://www.kitsapgov.com>

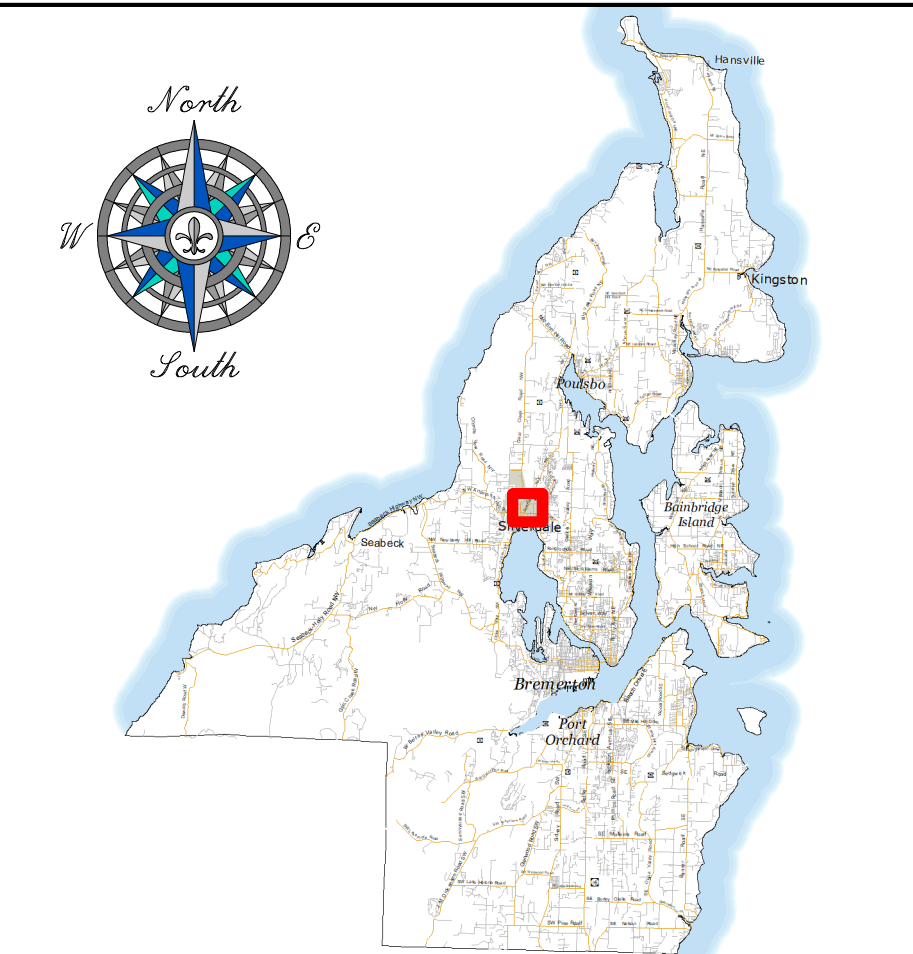
This map was created from existing map sources, not from field surveys. Determination of fitness for use lies with the user, as does the responsibility for understanding the accuracy and limitations of this map and data.

The information on this map may have been collected from various sources and can change over time without notice.

While great care was taken in making this map, there is no guarantee or warranty of its accuracy as to labeling, placement or location of any geographic features present. This map is intended for informational purposes only and is not a substitute for a field survey.

Kitsap County and its officials and employees assume no responsibility or legal liability for the accuracy, completeness, reliability, or timeliness of any information on this map.

Reference Source: Design Standards, KCC Title 17  
 Map Published Date: June, 2019



Sources: Esri, HERE, Garmin, Intermap, increment P Corp., GEBCO, USGS, FAO, NPS, NRCAN, GeoBase, IGN, Kadaster NL, Ordnance Survey, Esri Japan, METI, Esri China (Hong Kong), swisstopo, © OpenStreetMap contributors, and the GIS User Community