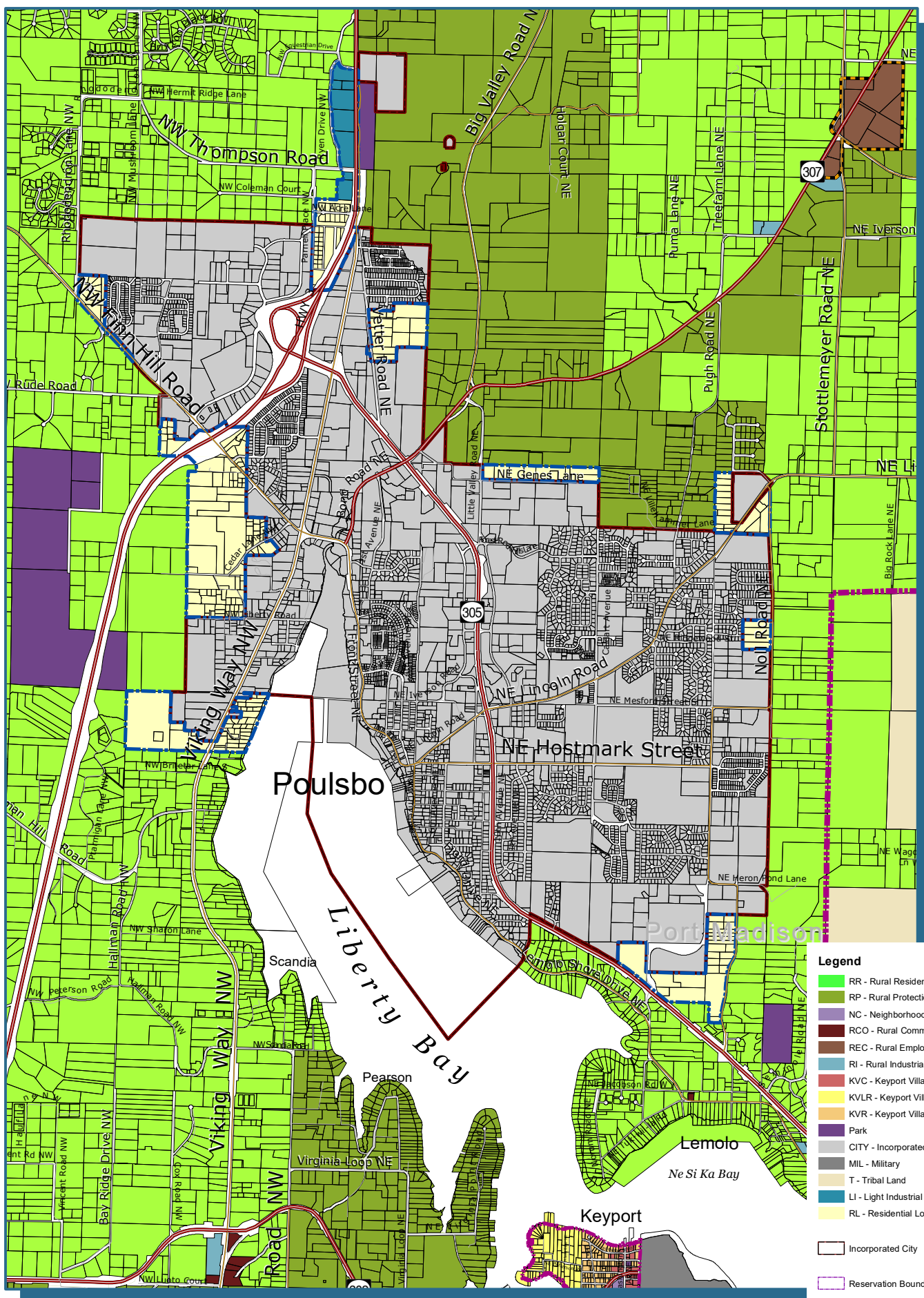




# Poulsbo Urban Transition Area Zoning



**Legend**

- RR - Rural Residential (1 DU/5 Ac)
- RP - Rural Protection (1 DU/10 Ac)
- NC - Neighborhood Commercial (10-30 DU/Ac)
- RCO - Rural Commercial
- REC - Rural Employment Center
- RI - Rural Industrial
- KVC - Keyport Village Commercial
- KVLR - Keyport Village Low Residential
- KVR - Keyport Village Residential
- Park
- CITY - Incorporated City
- MIL - Military
- T - Tribal Land
- LI - Light Industrial
- RL - Residential Low

Incorporated City  
 Reservation Boundaries

**Limited Areas of More Intense Rural Development**

- Type III
- Type I



Kitsap County Department of Community Development  
 614 Division Street, MS-36, Port Orchard, Washington 98366  
 VOICE (360) 337-5777 (Kitsap One) \* <https://www.kitsapgov.com/>

This map was created from existing map sources, not from field surveys. Determination of fitness for use lies with the user, as does the responsibility for understanding the accuracy and limitations of this map and data.  
 The information on this map may have been collected from various sources and can change over time without notice.  
 While great care was taken in making this map, there is no guarantee or warranty of its accuracy as to labeling, placement or location of any geographic features present. This map is intended for informational purposes only and is not a substitute for a field survey.  
 Kitsap County and its officials and employees assume no responsibility or legal liability for the accuracy, completeness, reliability, or timeliness of any information on this map.  
 Ord No. 587-2020 Comprehensive Plan Amendment  
 Map Published Date: April 29, 2020