

Geologically Hazardous Map

EROSION HAZARDS

KITSAP COUNTY

Washington

Legend

Erosion Hazard

- Very severe
- Severe
- Moderate

Channel Migration Zone

- High Geologic Hazards
Big Beef Creek, Chico Creek, Curley Creek and Tahuya

Coastal Erosion

- High
- Moderate
- Low

Tax Parcels

- Unincorporated Urban Growth Area
- Incorporated City
- Reservation Boundaries

Limited Areas of More Intense Rural Development

Type I

Limited Area of More Intense Rural Development - Type I
RCW 36.70A.070(5)(d)(i)
Mixed use areas or small communities intensively developed by 1990, where limited infill development is appropriate.

Type III

Limited Area of More Intense Rural Development - Type III
RCW 36.70A.070(5)(d)(i)
Lots containing isolated non-residential uses of new development of isolated cottage industries and isolated small businesses.

Street Center Lines

- State Highway
- Major Road
- Collector / Arterial
- Local Access; Local Road
- Railroad Lines
- Ferry Terminals
- Ferry Routes

Waterbodies (defined in WAC 222-16-030)

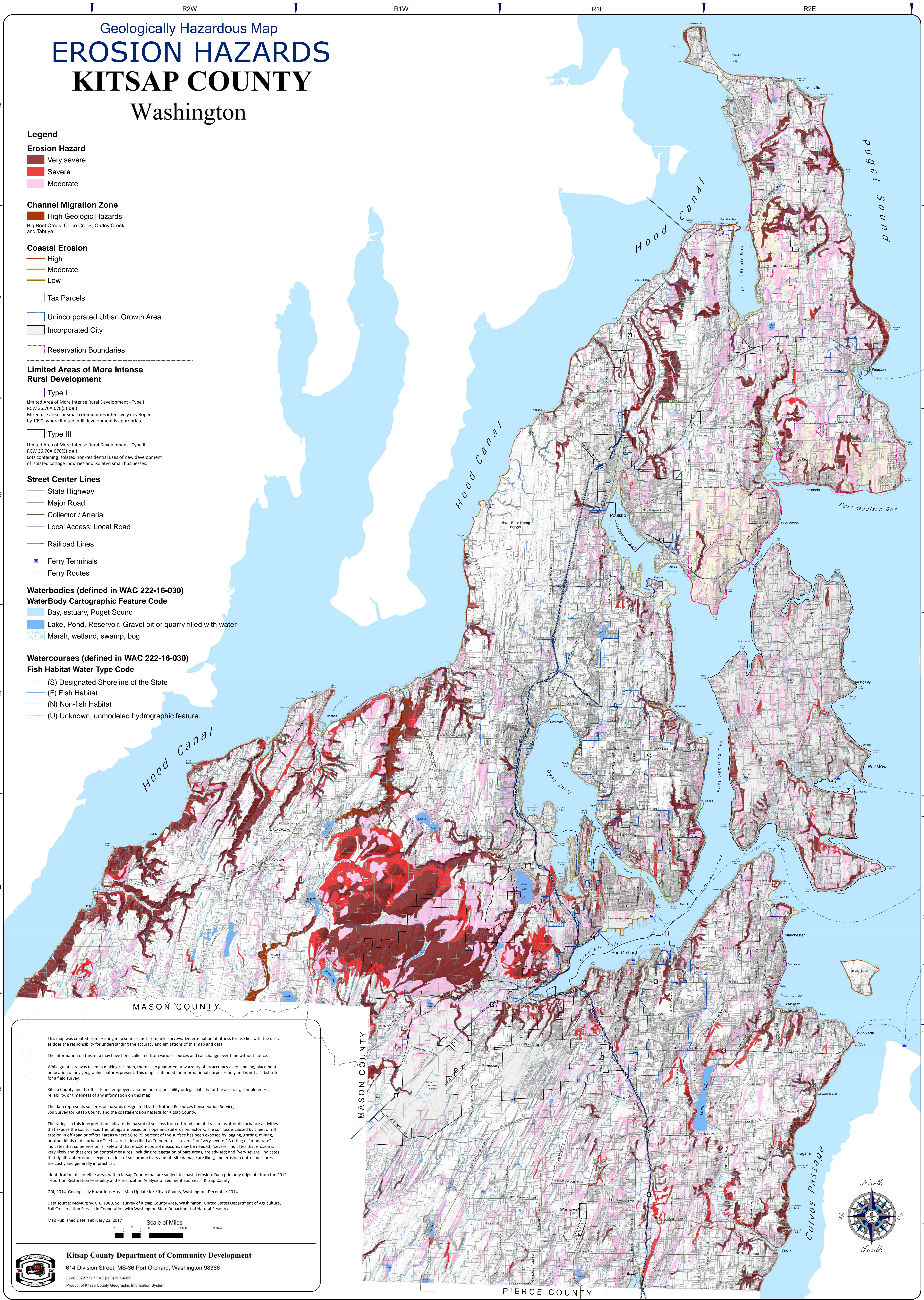
WaterBody Cartographic Feature Code

- Bay, estuary, Puget Sound
- Lake, Pond, Reservoir, Gravel pit or quarry filled with water
- Marsh, wetland, swamp, bog

Watercourses (defined in WAC 222-16-030)

Fish Habitat Water Type Code

- (S) Designated Shoreline of the State
- (F) Fish Habitat
- (N) Non-fish Habitat
- (U) Unknown, unmodeled hydrographic feature.



This map was created from existing map sources, not from field surveys. Determination of fitness for use lies with the user, as does the responsibility for understanding the accuracy and limitations of this map and data.

The information on this map may have been collected from various sources and can change over time without notice.

While great care was taken in making this map, there is no guarantee or warranty of its accuracy as to labeling, placement or location of any geographic features present. This map is intended for informational purposes only and is not a substitute for a field survey.

Kitsap County and its officials and employees assume no responsibility or legal liability for the accuracy, completeness, reliability, or timeliness of any information on this map.

The data represents soil erosion hazards designated by the Natural Resources Conservation Service, Soil Survey for Kitsap County and the coastal erosion hazards for Kitsap County.

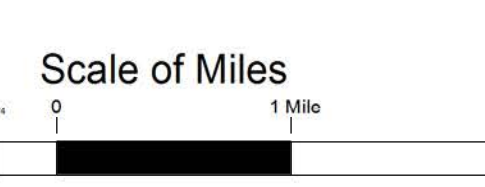
The ratings in this interpretation indicate the hazard of soil loss from off-road and off-trail areas after disturbance activities that expose the soil surface. The ratings are based on slope and soil erosion factor K. The soil loss is caused by sheet or rill erosion in off-road or off-trail areas where 50 to 75 percent of the surface has been exposed by logging, grazing, mining, or other kinds of disturbance. The hazard is described as "moderate," "severe," or "very severe." A rating of "moderate" indicates that some erosion is likely and that erosion-control measures may be needed; "severe" indicates that erosion is very likely and that erosion-control measures, including revegetation of bare areas, are advised; and "very severe" indicates that significant erosion is expected, loss of soil productivity and off-site damage are likely, and erosion-control measures are costly and generally impractical.

Identification of shoreline areas within Kitsap County that are subject to coastal erosion. Data primarily originate from the 2012 report on Restoration Feasibility and Prioritization Analysis of Sediment Sources in Kitsap County.

GRI, 2014, Geologically Hazardous Areas Map Update for Kitsap County, Washington, December 2014.

Data source: McMurphy, C.J., 1980, Soil survey of Kitsap County Area, Washington: United States Department of Agriculture, Soil Conservation Service in Cooperation with Washington State Department of Natural Resources.

Map Published Date: February 23, 2017



Kitsap County Department of Community Development
614 Division Street, MS-36 Port Orchard, Washington 98366
(360) 337-5777 • FAX (360) 337-4925
Product of Kitsap County Geographic Information System

