

# KITSAP COUNTY

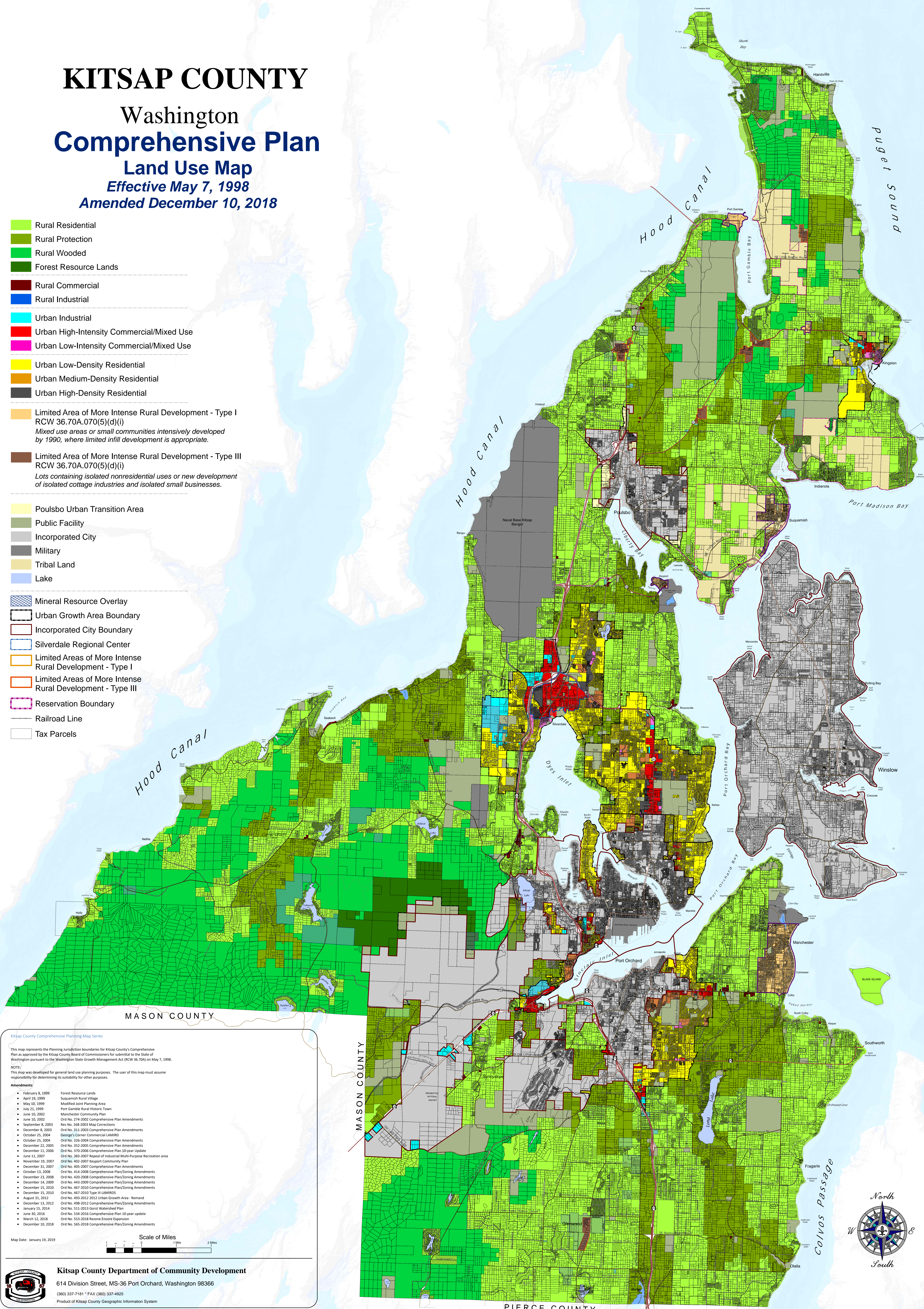
## Washington

### Comprehensive Plan

#### Land Use Map

Effective May 7, 1998  
Amended December 10, 2018

- Rural Residential
- Rural Protection
- Rural Wooded
- Forest Resource Lands
- Rural Commercial
- Rural Industrial
- Urban Industrial
- Urban High-Intensity Commercial/Mixed Use
- Urban Low-Intensity Commercial/Mixed Use
- Urban Low-Density Residential
- Urban Medium-Density Residential
- Urban High-Density Residential
- Limited Area of More Intense Rural Development - Type I  
RCW 36.70A.070(5)(d)(i)  
*Mixed use areas or small communities intensively developed by 1990, where limited infill development is appropriate.*
- Limited Area of More Intense Rural Development - Type III  
RCW 36.70A.070(5)(d)(i)  
*Lots containing isolated nonresidential uses or new development of isolated cottage industries and isolated small businesses.*
- Poulsbo Urban Transition Area
- Public Facility
- Incorporated City
- Military
- Tribal Land
- Lake
- Mineral Resource Overlay
- Urban Growth Area Boundary
- Incorporated City Boundary
- Silverdale Regional Center
- Limited Areas of More Intense Rural Development - Type I
- Limited Areas of More Intense Rural Development - Type III
- Reservation Boundary
- Railroad Line
- Tax Parcels



- Kitsap County Comprehensive Planning Map Series**
- This map represents the Planning Jurisdiction boundaries for Kitsap County's Comprehensive Plan as approved by the Kitsap County Board of Commissioners for submittal to the State of Washington pursuant to the Washington State Growth Management Act (RCW 36.70A) on May 7, 1998.
- NOTE:**  
This map was developed for general land use planning purposes. The user of this map must assume responsibility for determining its suitability for other purposes.
- Amendments:**
- February 8, 1999 Forest Resource Lands
  - April 19, 1999 Suquamish Rural Village
  - May 10, 1999 Modified Urban Planning Area
  - July 21, 1999 Port Gamble Rural Historic Town
  - June 10, 2002 Manchester Community Plan
  - June 10, 2002 Ord No. 274-2002 Comprehensive Plan Amendments
  - September 8, 2003 Res. No. 168-2003 Map Corrections
  - December 8, 2003 Ord No. 311-2003 Comprehensive Plan Amendments
  - October 25, 2004 George's Corner Commercial LAMRD
  - October 25, 2004 Ord No. 326-2004 Comprehensive Plan Amendments
  - December 22, 2005 Ord No. 352-2005 Comprehensive Plan Amendments
  - December 11, 2006 Ord No. 370-2006 Comprehensive Plan 10-year Update
  - June 11, 2007 Ord No. 383-2007 Repeal of Industrial Multi-Purpose Recreation area
  - November 19, 2007 Ord No. 402-2007 Keyport Community Plan
  - December 31, 2007 Ord No. 405-2007 Comprehensive Plan Amendments
  - October 13, 2008 Ord No. 416-2008 Comprehensive Plan/Zoning Amendments
  - December 23, 2008 Ord No. 420-2008 Comprehensive Plan/Zoning Amendments
  - December 14, 2009 Ord No. 443-2009 Comprehensive Plan/Zoning Amendments
  - December 15, 2010 Ord No. 467-2010 Comprehensive Plan/Zoning Amendments
  - December 15, 2010 Ord No. 467-2010 Type III LAMRDs
  - August 31, 2012 Ord No. 493-2012 2012 Urban Growth Area - Remand
  - December 13, 2012 Ord No. 498-2012 Comprehensive Plan/Zoning Amendments
  - January 15, 2014 Ord No. 513-2013 Gorst Watershed Plan
  - June 30, 2016 Ord No. 534-2016 Rezone Encore Expansion
  - March 12, 2018 Ord No. 553-2018 Rezone Encore Expansion
  - December 10, 2018 Ord No. 565-2018 Comprehensive Plan/Zoning Amendments

Map Date: January 19, 2019

Scale of Miles  
0 1 2 Miles

**Kitsap County Department of Community Development**  
614 Division Street, MS-36 Port Orchard, Washington 98366  
(360) 337-7181 \* FAX (360) 337-4925  
Product of Kitsap County Geographic Information System



T 28 N

T 27 N

T 26 N

T 25 N

T 24 N

T 23 N

T 28 N

T 27 N

T 26 N

T 25 N

T 24 N

T 23 N