

KITSAP COUNTY

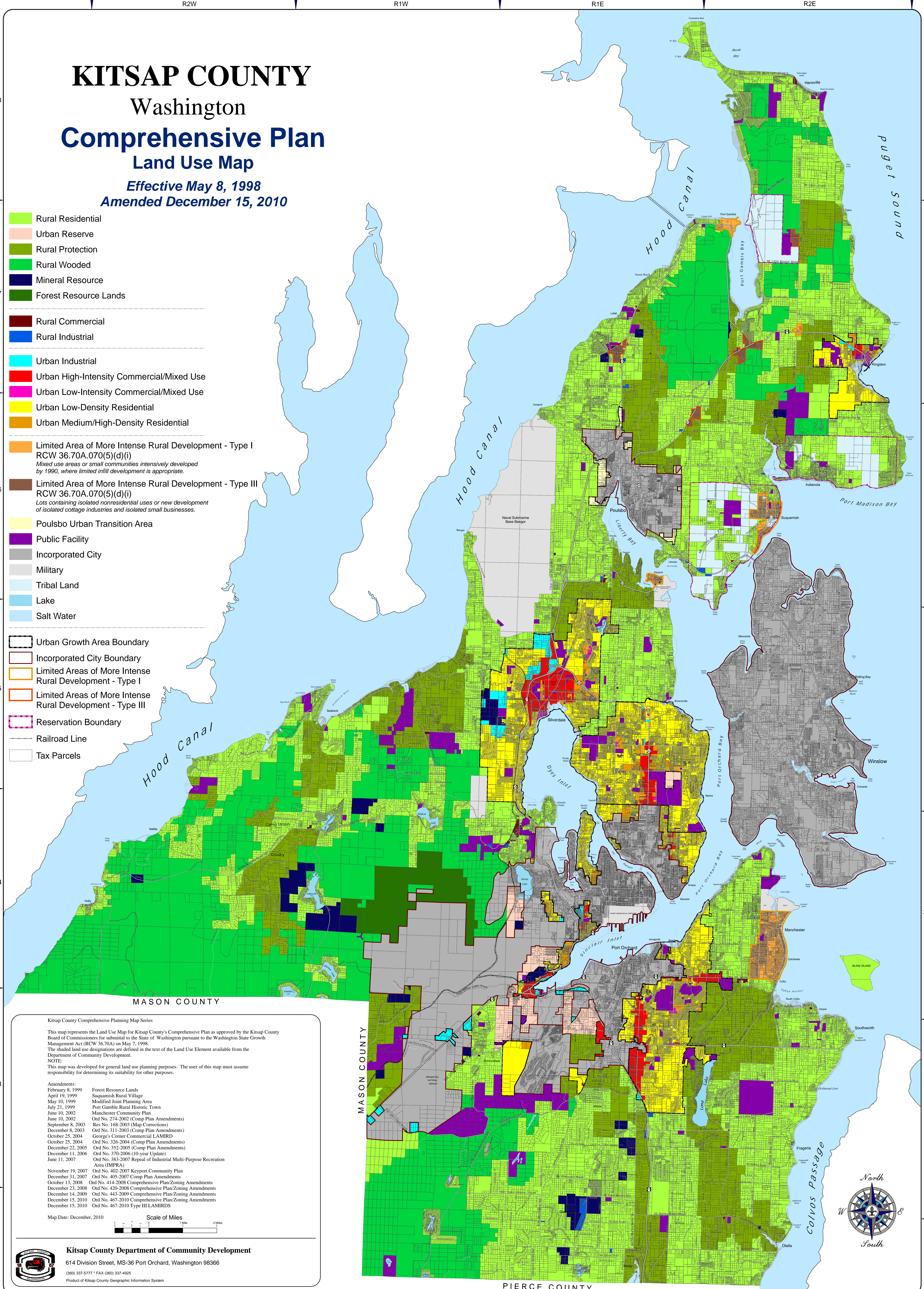
Washington

Comprehensive Plan

Land Use Map

Effective May 8, 1998
Amended December 15, 2010

- Rural Residential
 - Urban Reserve
 - Rural Protection
 - Rural Wooded
 - Mineral Resource
 - Forest Resource Lands
-
- Rural Commercial
 - Rural Industrial
-
- Urban Industrial
 - Urban High-Intensity Commercial/Mixed Use
 - Urban Low-Intensity Commercial/Mixed Use
 - Urban Low-Density Residential
 - Urban Medium/High-Density Residential
-
- Limited Area of More Intense Rural Development - Type I
RCW 36.70A.070(5)(d)(i)
Mixed use areas or small communities intensively developed by 1990, where limited infill development is appropriate.
 - Limited Area of More Intense Rural Development - Type III
RCW 36.70A.070(5)(d)(i)
Lots containing isolated nonresidential uses or new development of isolated cottage industries and isolated small businesses.
 - Poulsbo Urban Transition Area
 - Public Facility
 - Incorporated City
 - Military
 - Tribal Land
 - Lake
 - Salt Water
-
- Urban Growth Area Boundary
 - Incorporated City Boundary
 - Limited Areas of More Intense Rural Development - Type I
 - Limited Areas of More Intense Rural Development - Type III
 - Reservation Boundary
 - Railroad Line
 - Tax Parcels



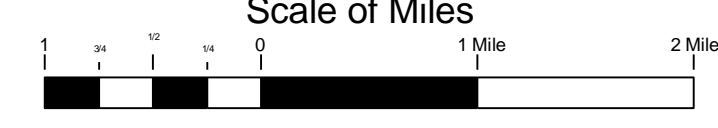
Kitsap County Comprehensive Planning Map Series

This map represents the Land Use Map for Kitsap County's Comprehensive Plan as approved by the Kitsap County Board of Commissioners for submittal to the State of Washington pursuant to the Washington State Growth Management Act (RCW 36.70A) on May 7, 1998. The shaded land use designations are defined in the text of the Land Use Element available from the Department of Community Development.

NOTE:
This map was developed for general land use planning purposes. The user of this map must assume responsibility for determining its suitability for other purposes.

Amendments:	Forest Resource Lands
February 8, 1999	Squamish Rural Village
April 19, 1999	Modified Joint Planning Area
May 10, 1999	Port Gamble Rural Historic Town
July 21, 1999	Manchester Community Plan
June 10, 2002	Ord No. 274-2002 (Comp Plan Amendments)
June 10, 2002	Res No. 168-2003 (Map Corrections)
September 8, 2003	Ord No. 311-2003 (Comp Plan Amendments)
December 8, 2003	Georges Corner Commercial LAMIRD
October 25, 2004	Ord No. 326-2004 (Comp Plan Amendments)
October 25, 2004	Ord No. 352-2005 (Comp Plan Amendments)
December 22, 2005	Ord No. 370-2006 (10-year Update)
December 11, 2006	Ord No. 383-2007 Repeal of Industrial Multi-Purpose Recreation Area (IMFRA)
June 11, 2007	Ord No. 402-2007 Keyport Community Plan
November 19, 2007	Ord No. 405-2007 Comp Plan Amendments
December 31, 2007	Ord No. 414-2008 Comprehensive Plan Zoning Amendments
October 13, 2008	Ord No. 420-2008 Comprehensive Plan Zoning Amendments
December 23, 2008	Ord No. 443-2009 Comprehensive Plan Zoning Amendments
December 14, 2009	Ord No. 467-2010 Comprehensive Plan Zoning Amendments
December 15, 2010	Ord No. 467-2010 Type III LAMIRDS

Map Date: December, 2010



Kitsap County Department of Community Development
614 Division Street, MS-36 Port Orchard, Washington 98366
(360) 337-5777 * FAX (360) 337-4925
Product of Kitsap County Geographic Information System