

KITSAP COUNTY

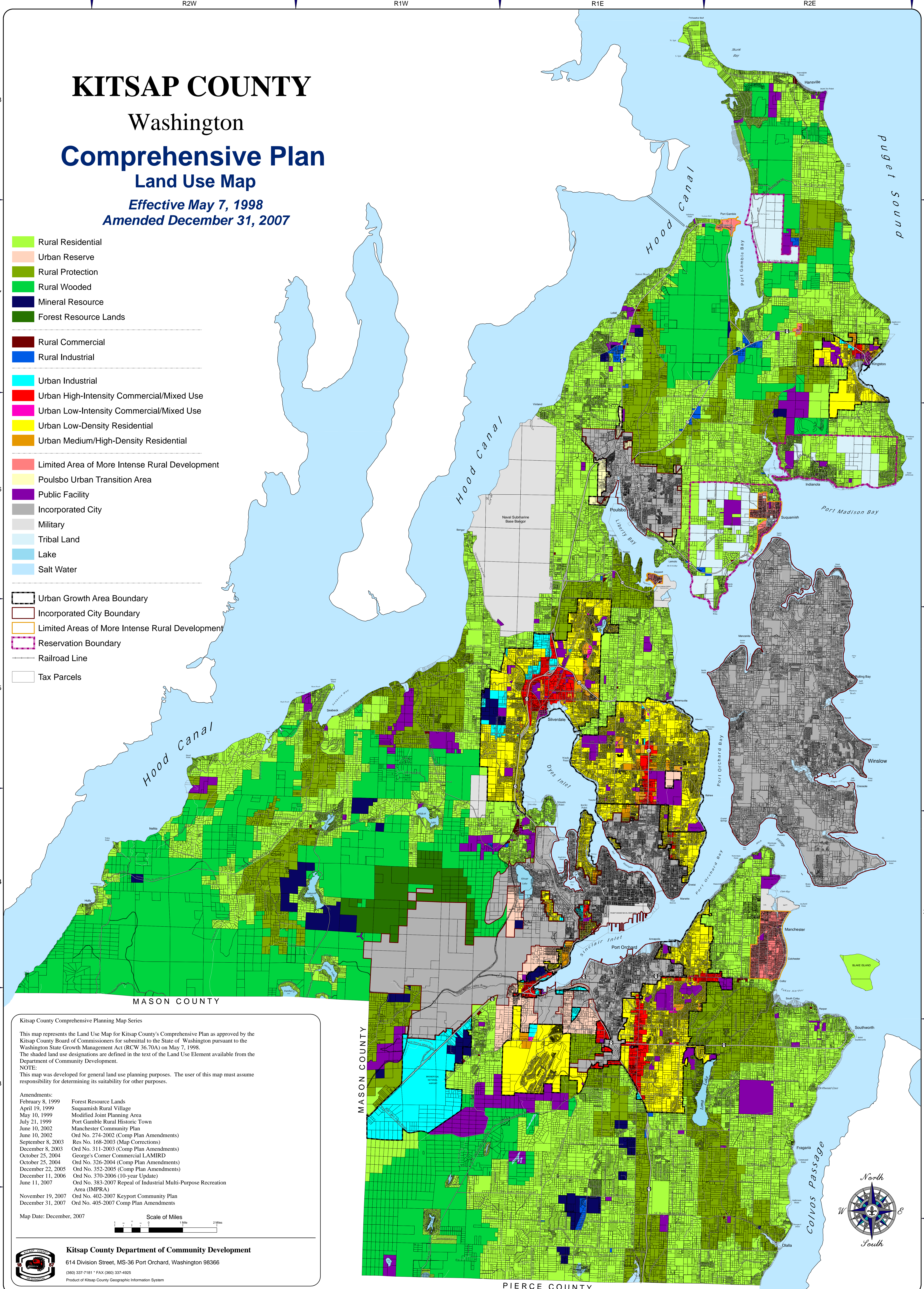
Washington

Comprehensive Plan

Land Use Map

Effective May 7, 1998
Amended December 31, 2007

- Rural Residential
 - Urban Reserve
 - Rural Protection
 - Rural Wooded
 - Mineral Resource
 - Forest Resource Lands
-
- Rural Commercial
 - Rural Industrial
 - Urban Industrial
 - Urban High-Intensity Commercial/Mixed Use
 - Urban Low-Intensity Commercial/Mixed Use
 - Urban Low-Density Residential
 - Urban Medium/High-Density Residential
-
- Limited Area of More Intense Rural Development
 - Poulsbo Urban Transition Area
 - Public Facility
 - Incorporated City
 - Military
 - Tribal Land
 - Lake
 - Salt Water
-
- Urban Growth Area Boundary
 - Incorporated City Boundary
 - Limited Areas of More Intense Rural Development
 - Reservation Boundary
 - Railroad Line
 - Tax Parcels



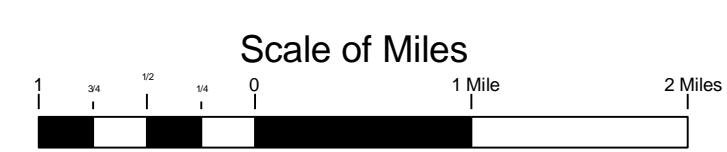
Kitsap County Comprehensive Planning Map Series

This map represents the Land Use Map for Kitsap County's Comprehensive Plan as approved by the Kitsap County Board of Commissioners for submittal to the State of Washington pursuant to the Washington State Growth Management Act (RCW 36.70A) on May 7, 1998. The shaded land use designations are defined in the text of the Land Use Element available from the Department of Community Development.

NOTE: This map was developed for general land use planning purposes. The user of this map must assume responsibility for determining its suitability for other purposes.

- Amendments:
- | | |
|-------------------|--|
| February 8, 1999 | Forest Resource Lands |
| April 19, 1999 | Squamish Rural Village |
| May 10, 1999 | Modified Joint Planning Area |
| July 21, 1999 | Port Gamble Rural Historic Town |
| June 10, 2002 | Manchester Community Plan |
| June 10, 2002 | Ord No. 274-2002 (Comp Plan Amendments) |
| September 8, 2003 | Res No. 168-2003 (Map Corrections) |
| December 8, 2003 | Ord No. 311-2003 (Comp Plan Amendments) |
| October 25, 2004 | George's Corner Commercial LAMIRD |
| October 25, 2004 | Ord No. 326-2004 (Comp Plan Amendments) |
| December 22, 2005 | Ord No. 352-2005 (Comp Plan Amendments) |
| December 11, 2006 | Ord No. 370-2006 (10-year Update) |
| June 11, 2007 | Ord No. 383-2007 Repeal of Industrial Multi-Purpose Recreation Area (IMPREA) |
| November 19, 2007 | Ord No. 402-2007 Keyport Community Plan |
| December 31, 2007 | Ord No. 405-2007 Comp Plan Amendments |

Map Date: December, 2007



Kitsap County Department of Community Development

614 Division Street, MS-36 Port Orchard, Washington 98366

(360) 337-7181 • FAX (360) 337-4925

Product of Kitsap County Geographic Information System

