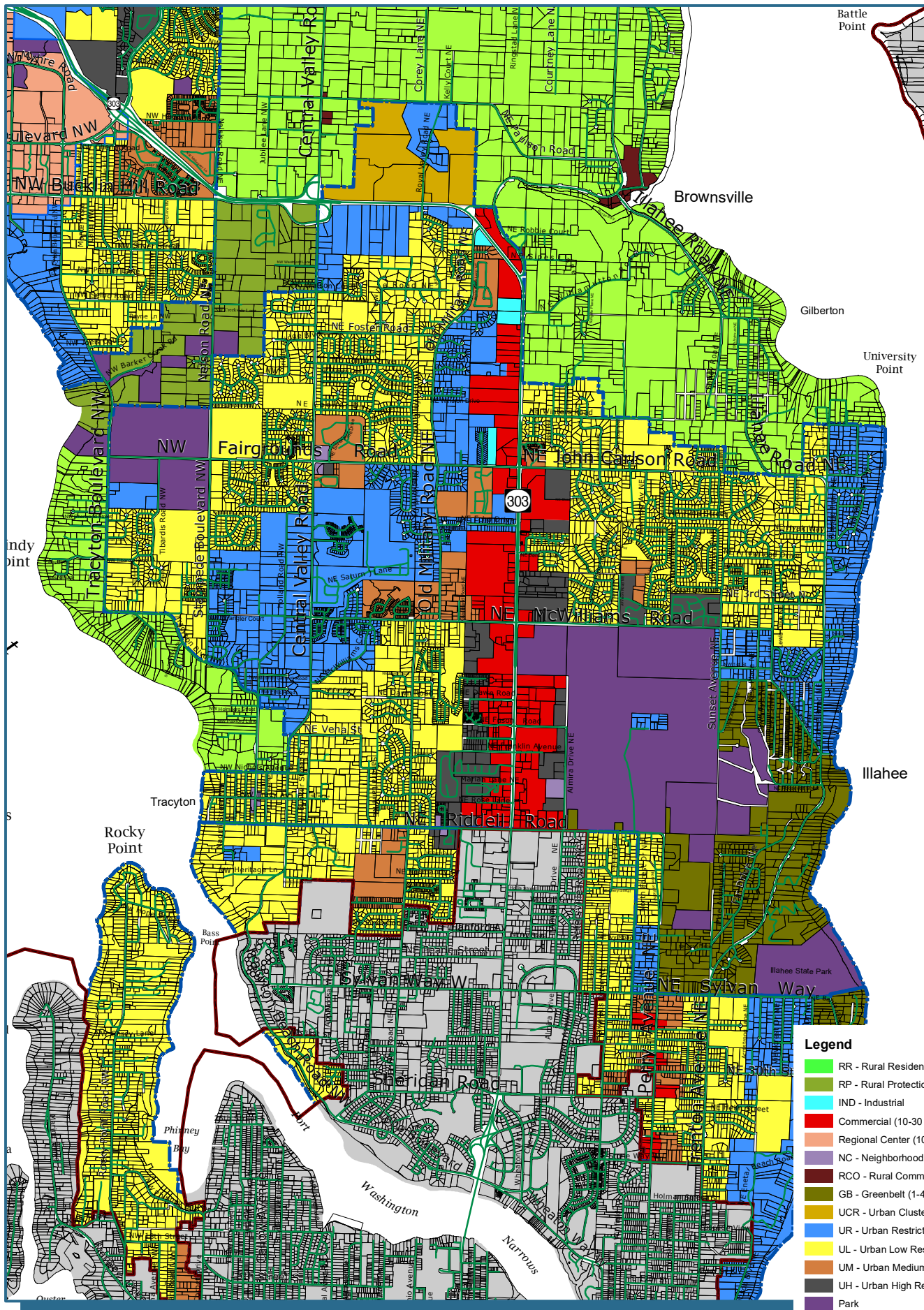


Central Kitsap Urban Growth Area Zoning



- Legend**
- RR - Rural Residential (1 DU/5 Ac)
 - RP - Rural Protection (1 DU/10 Ac)
 - IND - Industrial
 - Commercial (10-30 DU/Ac)
 - Regional Center (10-30 DU/Ac)
 - NC - Neighborhood Commercial (10-30 DU/Ac)
 - RCO - Rural Commercial
 - GB - Greenbelt (1-4 DU/Ac)
 - UCR - Urban Cluster Residential (5-9 DU/Ac)
 - UR - Urban Restricted (1-5 DU/Ac)
 - UL - Urban Low Residential (5-9 DU/Ac)
 - UM - Urban Medium Residential (10-18 DU/Ac)
 - UH - Urban High Residential (19-30 DU/Ac)
 - Park
 - CITY - Incorporated City
 - Unincorporated Urban Growth Area
 - Incorporated City

Kitsap County Department of Community Development
 614 Division Street, MS-36, Port Orchard, Washington 98366
 VOICE (360) 337-5777 (Kitsap One) * <https://www.kitsapgov.com/>

This map was created from existing map sources, not from field surveys. Determination of fitness for use lies with the user; as does the responsibility for understanding the accuracy and limitations of this map and data.
 The information on this map may have been collected from various sources and can change over time without notice.
 While great care was taken in making this map, there is no guarantee or warranty of its accuracy as to labeling, placement or location of any geographic features presented. This map is intended for informational purposes only and is not a substitute for a field survey.
 Kitsap County and its officials and employees assume no responsibility or legal liability for the accuracy, completeness, reliability, or timeliness of any information on this map.
 Ord. No. 587, 2020 Comprehensive Plan Amendment
 Map Published Date: June 13, 2022