



KINGSTON REGIONAL STORMWATER TREATMENT FACILITY

Kingston Community Advisory Council Update

August 9, 2023

Kitsap County Public Works - Stormwater Division



TEAM

Michelle Perdue – KCPW Stormwater Program Manager

Shawn Aire – KCPW Stormwater Retrofit and Asset Manager

Tim Beachy, P.E. – KCPW Capital Project Manager

Phil Struck – Consultant team Project Manager





PRESENTATION OVERVIEW

- ▶ Project Purpose
- ▶ Regional Plan and Service Area
- ▶ Connection Process and Costs
- ▶ Construction
- ▶ Questions



PURPOSE:

- Improve water quality
- Supports sustainable economic development

WHY A REGIONAL FACILITY?

- Treat existing developed areas that were built before water quality standards
- Serves larger basin not just one property or site
- Economies of scale: less costly to design, build and maintain
- Effectiveness - typically perform better over time



OTHER REGIONAL FACILITIES IN KITSAP COUNTY



MANCHESTER STORMWATER PARK



SUQUAMISH REGIONAL TREATMENT



WHISPERING FIRS STORMWATER PARK



SILVERDALE DUWE'IQ TREATMENT WETLAND



WHAT MAKES THIS PROJECT UNIQUE?



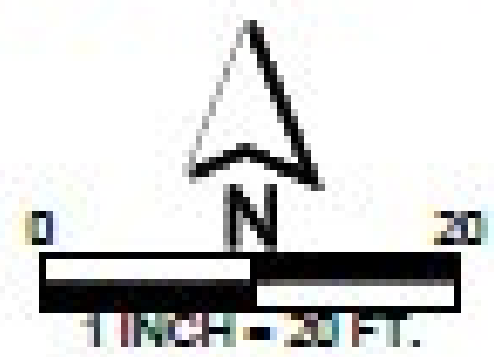
- Treat nearly 65 acres of runoff in a very small footprint prior to discharge to Puget Sound
- Provides “invisible” stormwater treatment that does not impede surface use



PROJECT LOCATION

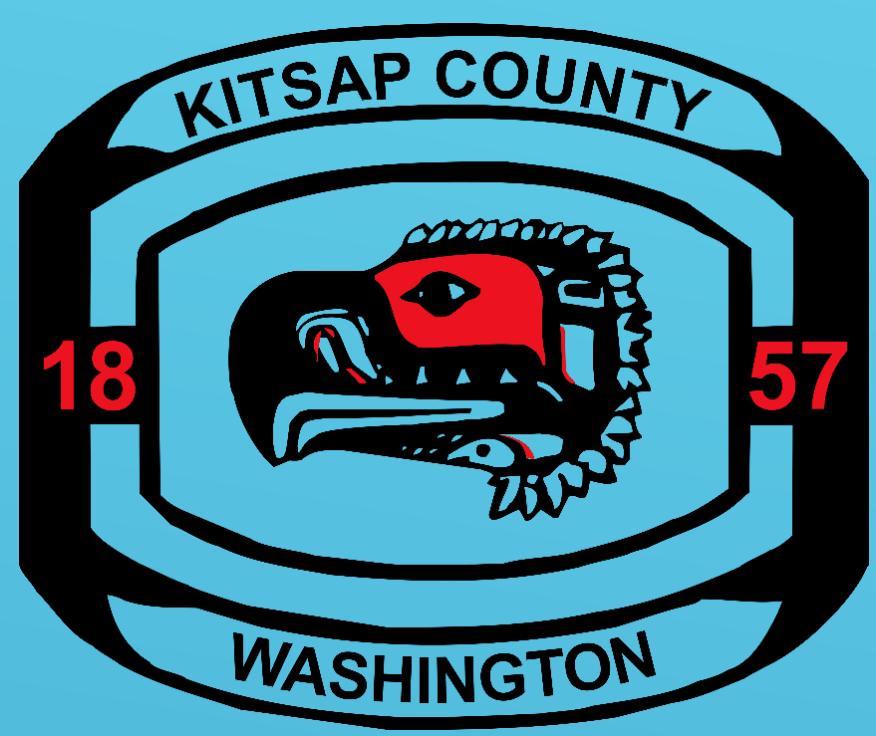


Parametrix 04E February 2, 2022 FILE 2020-03-02_KC_MTB

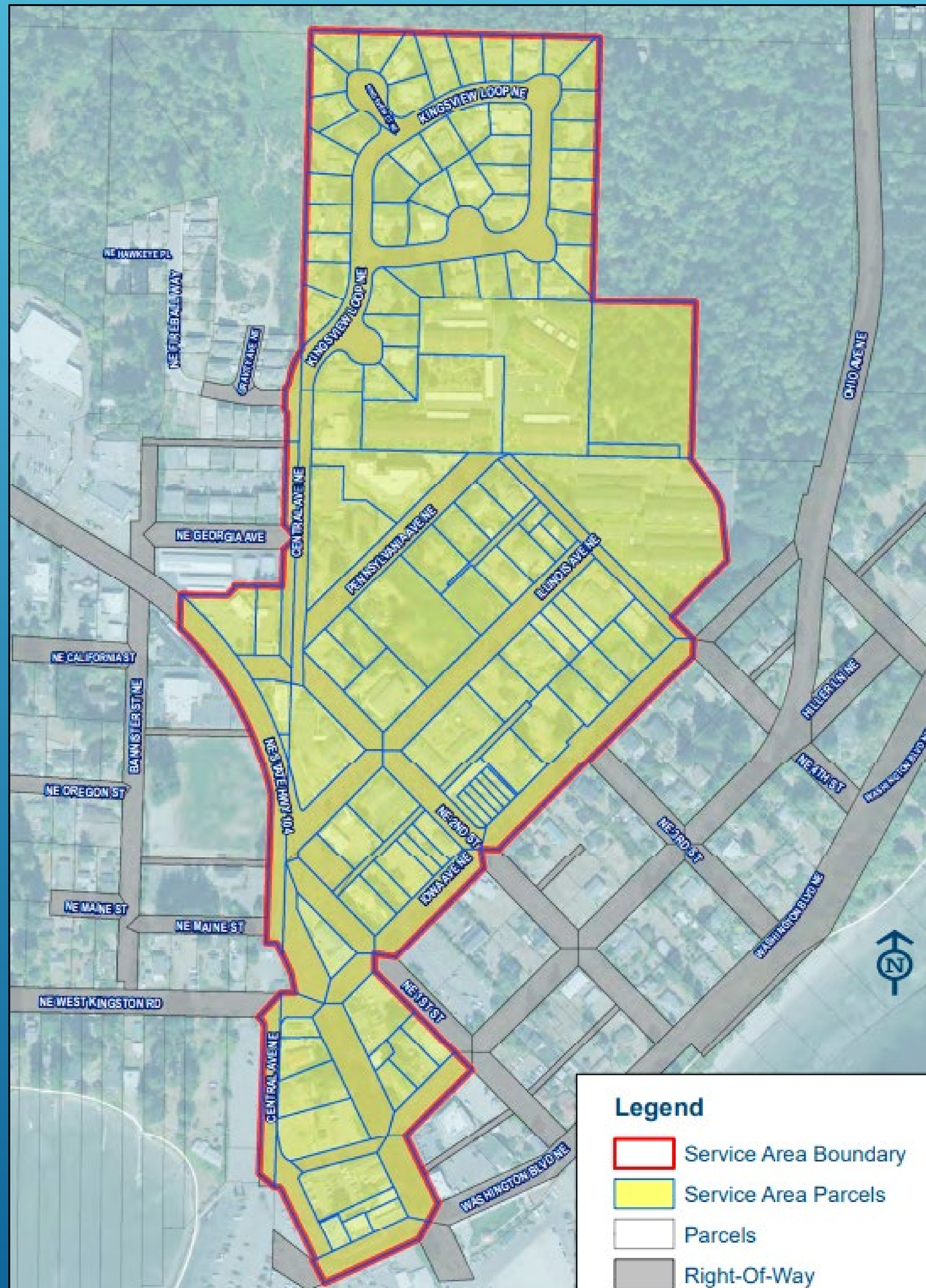


FEBRUARY 2, 2022 - PRELIMINARY

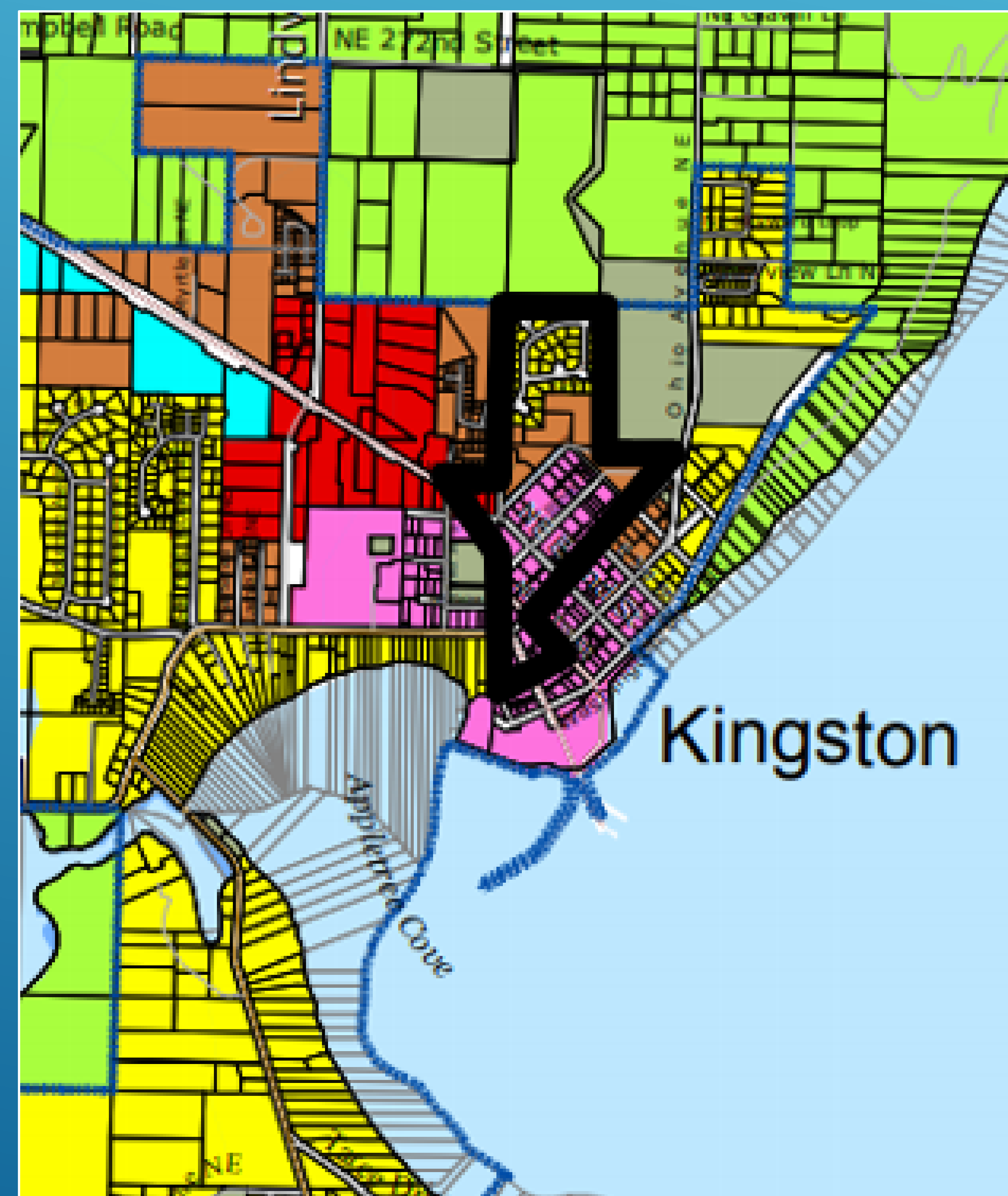
Ohio Street Configuration
KINGSTON REGIONAL STORMWATER TREATMENT



SERVICE AREA



- Older infrastructure
- Higher development density
- Minimal water quality treatment





REGIONAL PLAN FRAMEWORK:

- Kitsap County constructs, maintains and owns
- Majority of treatment capacity (~74%) for existing streets and development
- 26% of capacity available for new development and re-development within service area
- New development uses County regional facility in lieu of private on-site facilities
- New/re-development pays Kitsap County a connection charge based on impervious surface
- Anticipate connection in 2024



CONNECTION PROCESS AND COSTS

- ▶ Capacity available for full build out of Service Area
- ▶ Cost based on impervious area; in range of \$1sf/TIA
- ▶ Final connection process and cost to be determined at project completion
- ▶ Kitsap County performs and pays for O&M
- ▶ Time and cost savings compared to on-site facility

Table 5-5. Cost Comparison for Typical Development Project (with 10,000 sq-ft new impervious surfaces).

COST ELEMENT	DEVELOPMENT AND STORMWATER MGMT. SCENARIO		
	RESIDENTIAL ON-SITE	COMMERCIAL ON-SITE	KINGSTON REGIONAL FACILITY
Engineering Design	\$20,000	\$21,000	\$5,000 ¹
Flow Control and Treatment ²	\$20,000	\$49,000	\$8,670
TOTAL	\$40,000	\$69,000	\$13,670
<i>Cost Savings Due to Regional Facility</i>	<i>\$26,330</i>	<i>\$55,330</i>	<i>-</i>

¹ Assumes abbreviated engineering report.

² Does not include costs to implement on-site stormwater management elements required under MR 5.



CONSTRUCTION!





PROJECT LOCATION



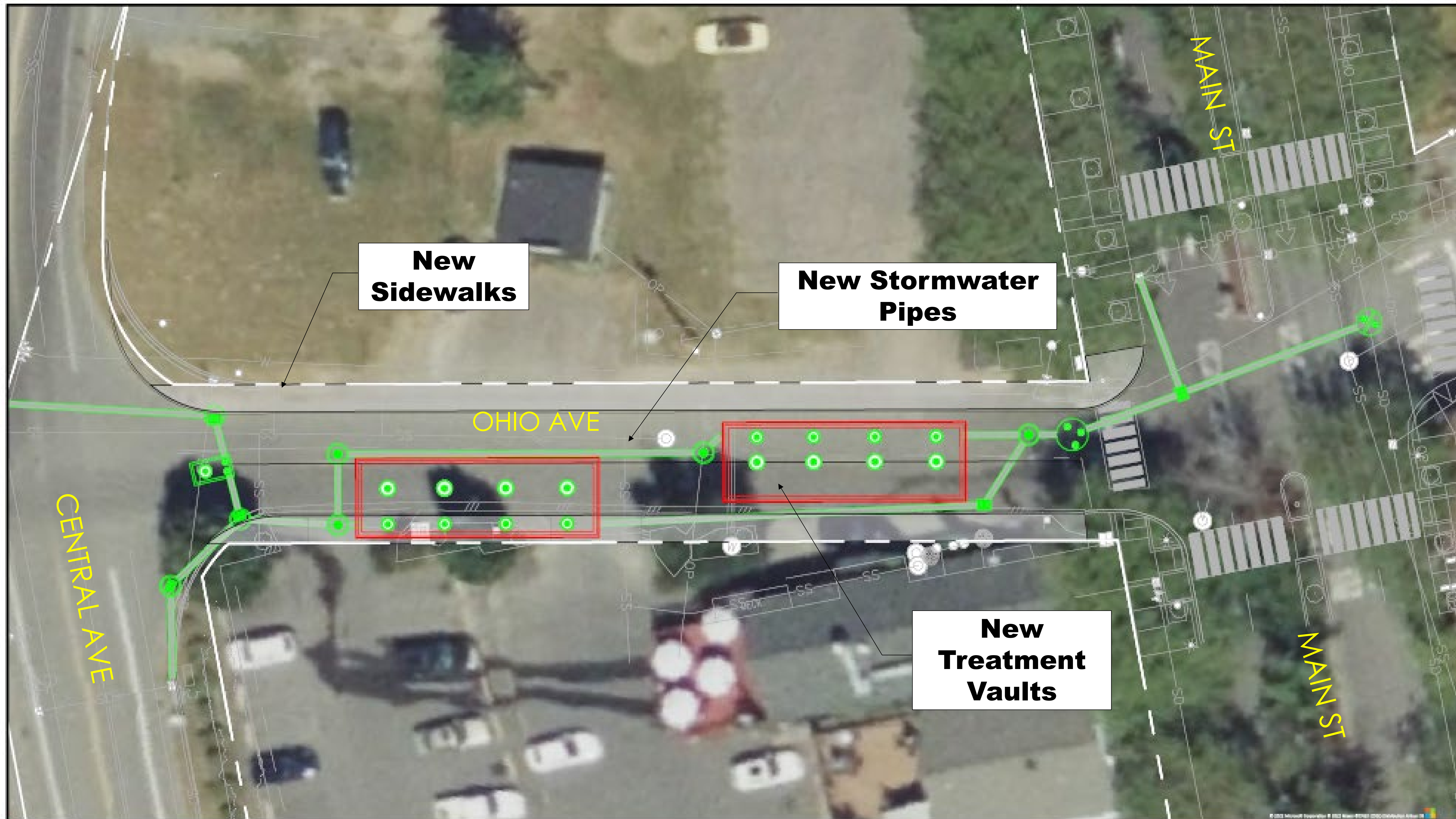


WATER QUALITY VAULT LOCATIONS

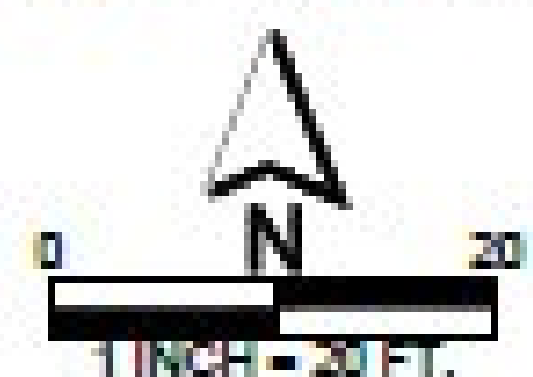




LAYOUT – OHIO STREET



Parametrix 0416 February 2, 2022 FILE 2022-02-02_NC_MTB



FEBRUARY 2, 2022 - PRELIMINARY

Ohio Street Configuration
KINGSTON REGIONAL STORMWATER TREATMENT



WHAT TO EXPECT:

- Construction begins after Labor Day
- 60 working days



What to Expect:

- Ohio Avenue to be closed between Central Avenue and Main Street during the project.
- Intermittent closure of the Central Avenue and Washington Blvd intersection.
- Road Closure schedule to be determined as the contractor progresses.
- Private parking on properties adjacent to Ohio Avenue will remain open during the project.
- Periodic traffic delays.
- Construction noise.



KITSAP COUNTY HOMEPAGE



Election Results



Current Topics

- › Kitsap1 - Customer Service
- › See, Click, Fix!
Request services online!
- › Burn Ban Information
- › Employment
Click here to learn about employment opportunities
- › Love Where You Work!
- › Inclement Weather Page
- › Code Updates
- › General Tax Distribution
- › Getting You There Story Map
- › Online Permitting!
- › Online Services
- › The Road Report
- › WSDOT Updates



Popular Links

- › County Advisory Groups
- › Comprehensive Plan
- › Departments & Offices
- › Elections
- › Garbage and Recycling
- › Kitsap County Code
- › Report Water Pollution
- › Rent County Facilities
- › Veteran's Services
- › Volunteering
- › Weather/Emergency Info
- › Youth Education



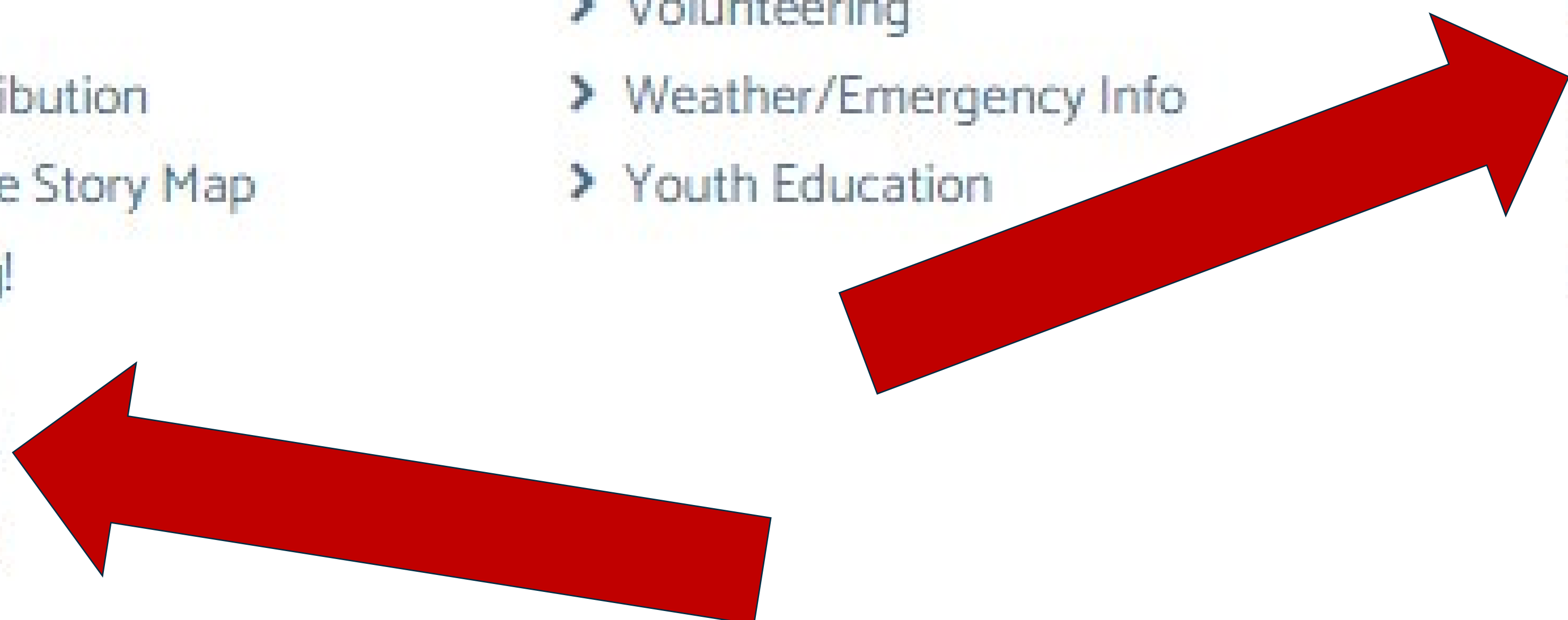
County Resources

- › Agenda Master Schedule
- › Aging & Long Term Care
- › Commissioner Meeting Agendas
- › Departments & Offices
- › District Court Daily Calendar
- › EEO/Disability
Accommodations
- › Fire Marshal
- › Event Calendar
- › Performance Kitsap
- › Public Works Projects
- › Suicide Prevention
- › Superior Court



Online Services

- › Inmate Roster
- › Job Opportunities
- › Marriage Licenses
- › Online Permitting
- › Oversized Load Permit
- › Parcel Details/Tax Info
- › Parcel Search
- › Plats Search
- › Public Records Request
- › Report a problem!
- › Search Recorded Documents
- › Tax Payments
- › Temporary Road Closure Permit
- › Utility Payments
- › Vehicle/Vessel Tabs





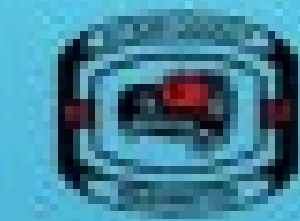
Kingston Regional Stormwater Facility

This proposed Regional Stormwater Facility will serve the central Kingston urban growth area (UGA) and treat stormwater runoff from multiple projects and/or properties through a Kitsap County-sponsored program.

[Sign up for electronic updates for this project.](#)

Project Status

It is anticipated that construction for this project will begin in late summer 2023 and will last approximately 60 days.



PROPOSED LAYOUT – OHIO STREET



KINGSTON REGIONAL STORMWATER TREATMENT FACILITY

02/09/2022



A Regional Approach to Treating Stormwater

Traditionally, on-site structural stormwater controls like vaults, ponds, and swales are constructed for each individual development and the developer must finance the design and construction of these stormwater systems. Property owners are also responsible for the ongoing maintenance of these systems.

Under the regional approach described in this plan, Kitsap County would construct a single regional facility and developers could pay a fee to connect to the facility instead of constructing their own on-site facilities.

The connection fee has not yet been determined and will be finalized after construction has been completed.



QUESTIONS?



Project Engineer
Public Works Roads Division
Tim Beachy, P.E. tbeachy@kitsap.gov

Retrofit and Asset Manager
Public Works Stormwater Division
Shawn Alire salire@kitsap.gov