

Holiday Recycle Guide



GARBAGE

**Donate or reuse instead!*



Fancy gift wrap
(foil, glitter, etc.)



Tissue paper
and cellophane



Plastic packaging



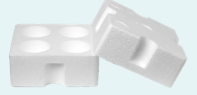
Plastic trays
and lids



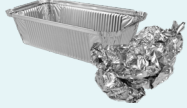
Paper plates, towels,
and napkins



Paper and
plastic cups



Foam packaging



Aluminum foil,
pans, and plates



Fancy gift bags and
stiff gift boxes*



Bows and ribbons*



Decorations*



Toys*



Artificial trees*



RECYCLE

Remove bows, ribbons, and items with foils or glitter. If unsure, ask an attendant.



Plain gift wrap
(flattened, no foil, glitter)



Plain gift boxes and bags
(flattened)



Plain cards and envelopes
(no foil, glitter, batteries)



Catalogs



Cardboard
(flattened)



SPECIAL DROP-OFF SITES

Find recycle locations for these items and more at Recycle.Kitsap.Gov



Fresh cut trees



String lights



Foam packaging



Batteries



Plastic bags and wrap



Electronics



Kitsap County | Kitsap1: 360.337.5777 | Recycle.Kitsap.Gov

