

# Bremerton, WA

## KEY FACTS

43,992

Population

33.8

Median Age

2.3

Average Household Size

\$54,199

Median Household Income

## EDUCATION

6%

No High School Diploma



24%

High School Graduate



46%

Some College



24%

Bachelor's/Grad/Prof Degree

## TRANSPORTATION TO WORK



9%

Workers 16+ Took Public Transportation



1%

Workers 16+ Bicycled



63%

Workers 16+ Drove Alone to Work



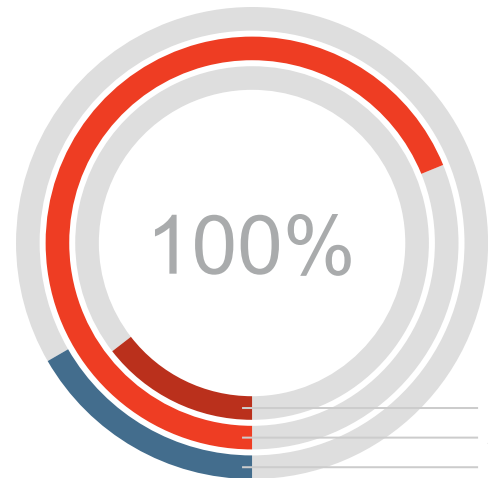
16%

Workers 16+ Walked



6%

Workers 16+ Carpooled



## AGE DISTRIBUTION

Seniors 65+ 15%  
Adults 15 to 64 69%  
Children 14 under 17%

## AT RISK



16%

Households Below the Poverty Level



35%

Households with 1+ Persons with a Disability



0%

Population 65+ speak Spanish & No English

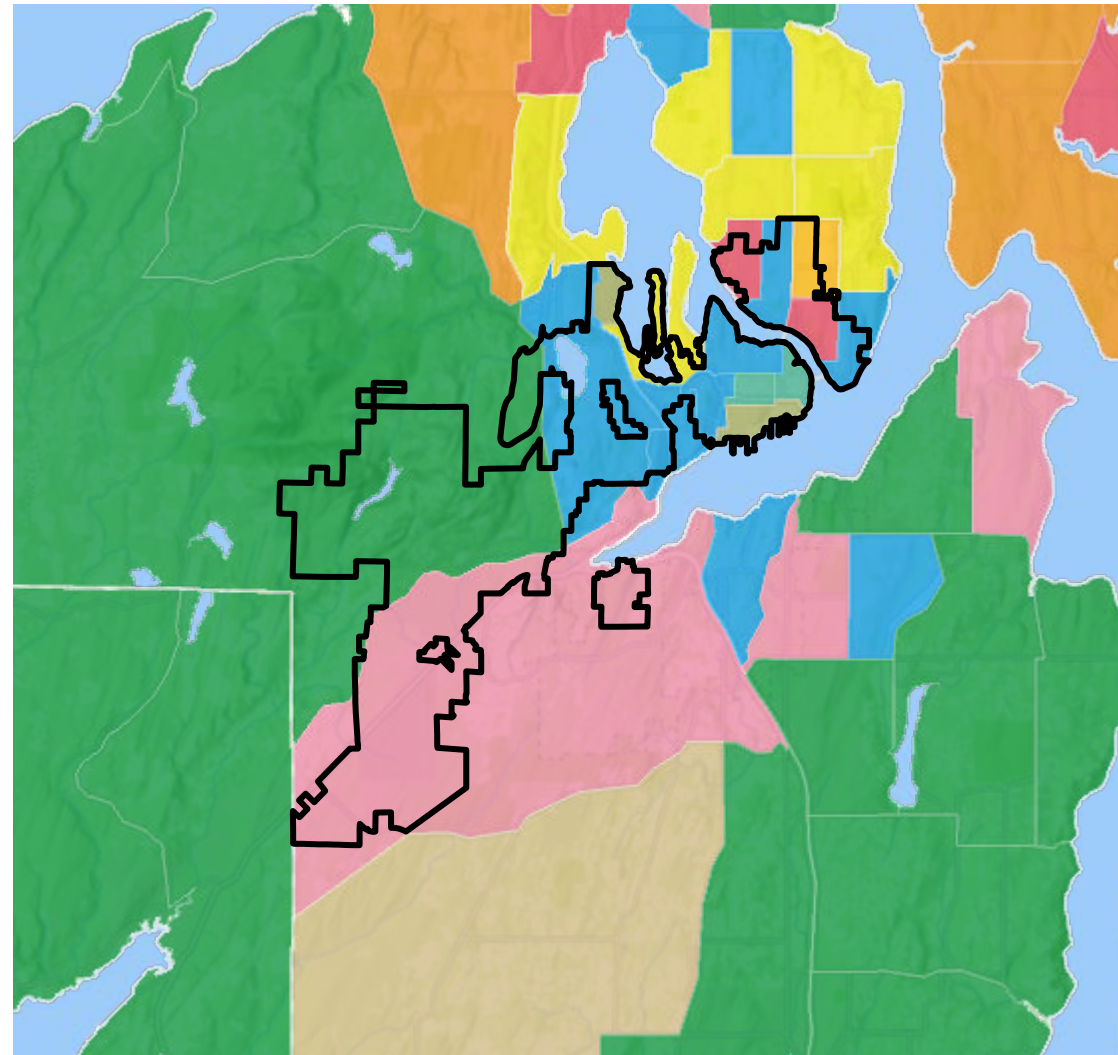


5%

Owner Households with No Vehicles

## Tapestry LifeModes

- Affluent Estates
- Upscale Avenues
- Uptown Individuals
- Family Landscapes
- GenXurban
- Cozy Country Living
- Ethnic Enclaves
- Middle Ground
- Senior Styles
- Rustic Outposts
- Midtown Singles
- Hometown
- Next Wave
- Scholars and Patriots
- Unclassified



## EMPLOYMENT



62%

White Collar



21%

Blue Collar



18%

Services

18.1%

Unemployment Rate

## BUSINESS



1,425

Total Businesses



18,833

Total Employees

## HOUSING



\$262,022

Median Home Value



\$7,333

Average Spent on Mortgage & Basics



\$848

Median Contract Rent

## TAPESTRY SEGMENTS

### Tapestry Segments TOP 3

8E	<b>Front Porches</b> 4,306 households	<b>25.1%</b> of Households	▼
11D	<b>Set to Impress</b> 3,918 households	<b>22.8%</b> of Households	▼
9E	<b>Retirement Communities</b> 1,753 households	<b>10.2%</b> of Households	▼

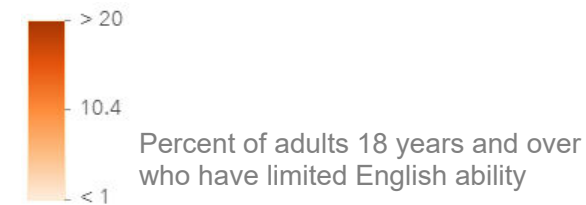
# Bremerton, WA

## Race and Ethnicity

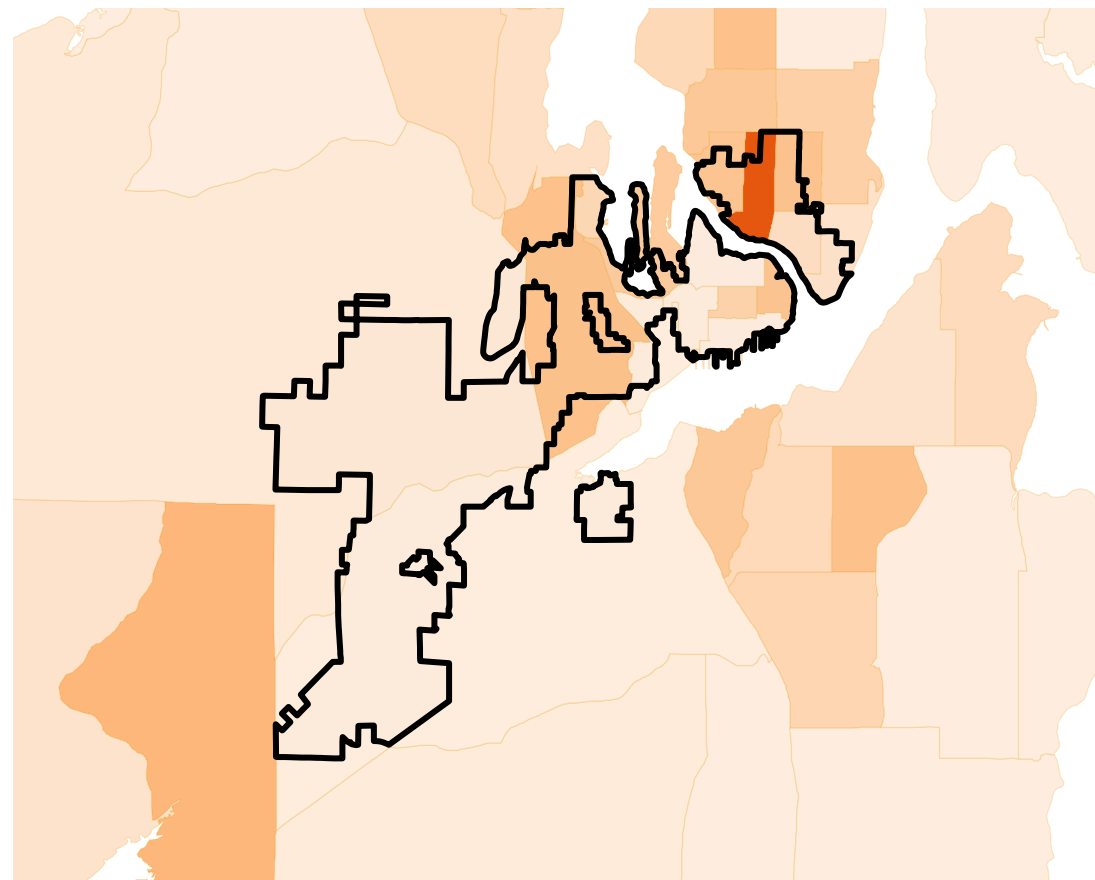
The largest group: White Alone (70.92)

The smallest group: Pacific Islander Alone (1.3)

Indicator ▲	Value	Diff
White Alone	70.92	-9.12
Black Alone	7.47	+4.38
American Indian/Alaska Native Alone	1.86	+0.29
Asian Alone	6.13	+0.68
Pacific Islander Alone	1.3	+0.36
Other Race	3.5	+1.5
Two or More Races	8.82	+1.91
Hispanic Origin (Any Race)	12.24	+3.84



Bars show deviation from Kitsap County



## SPANISH ACTIVITIES



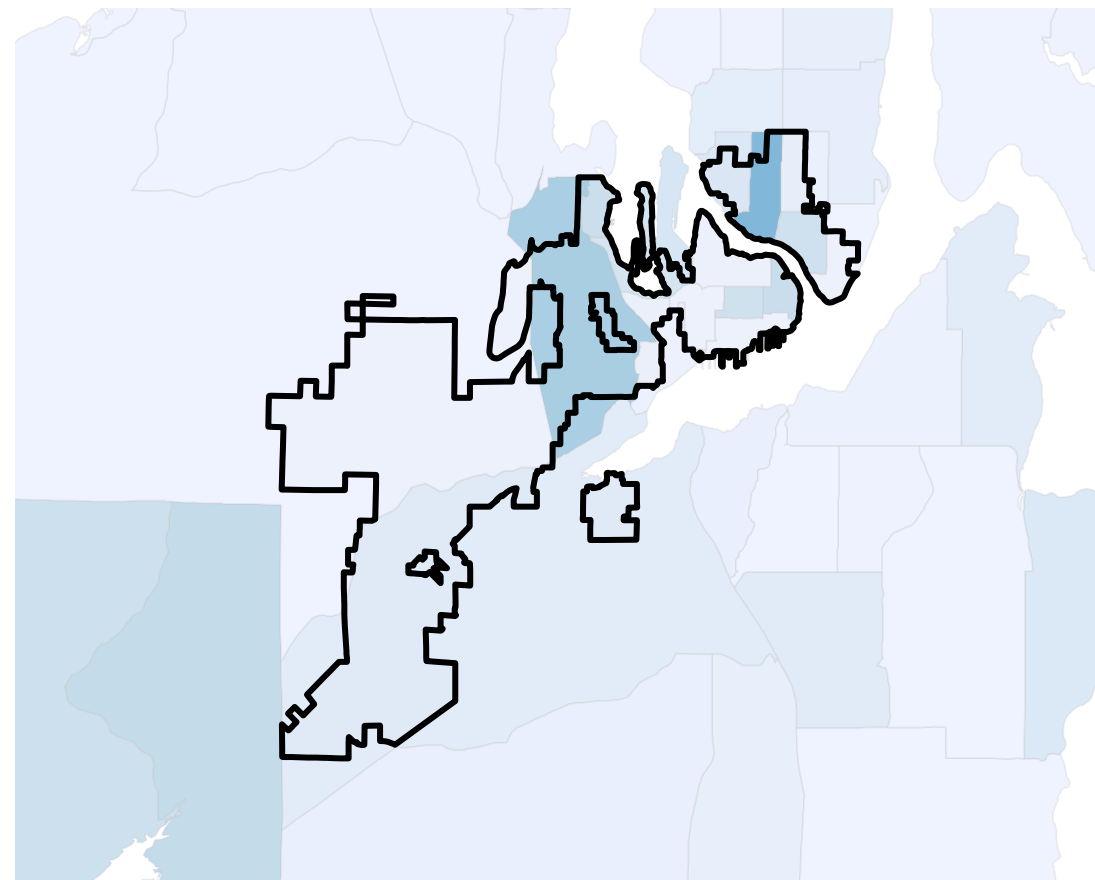
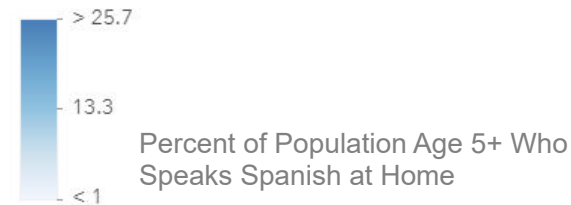
3%

Used Spanish language website in last app in last 30 days



9%

Read any Spanish language magazine in last 6 months



## LIMITED ENGLISH PROFICIENCY ADULTS 18-64

HH %

Speak Spanish & No English	0%
Speak Spanish & English Not Well	0%
Speak Indo-European & No English	0%
Speak Indo-European & English Not Well	0%
Speak Asian-Pacific Island & No English	0%
Speak Asian-Pacific Island & English Not Well	0%
Speak Other Language & No English	0%
Speak Other Language & English Not Well	0%

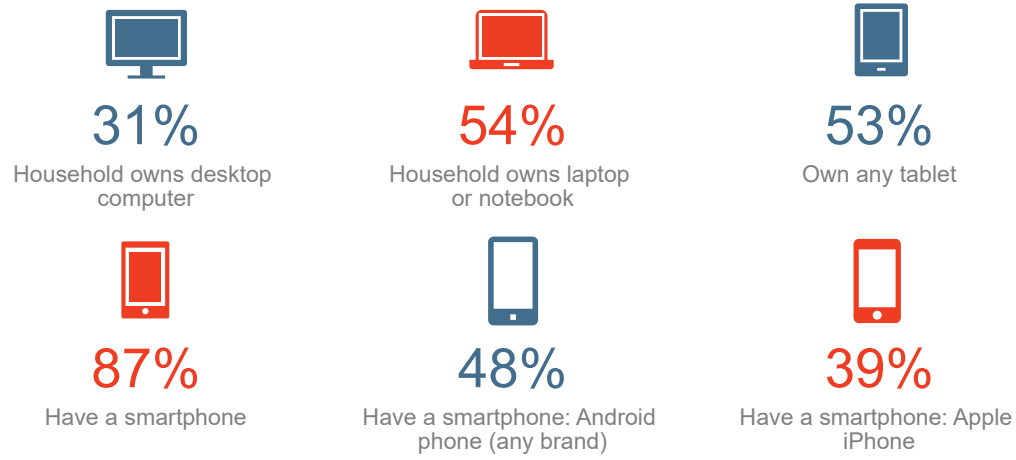
## LIMITED ENGLISH PROFICIENCY SENIORS 65+

HH %

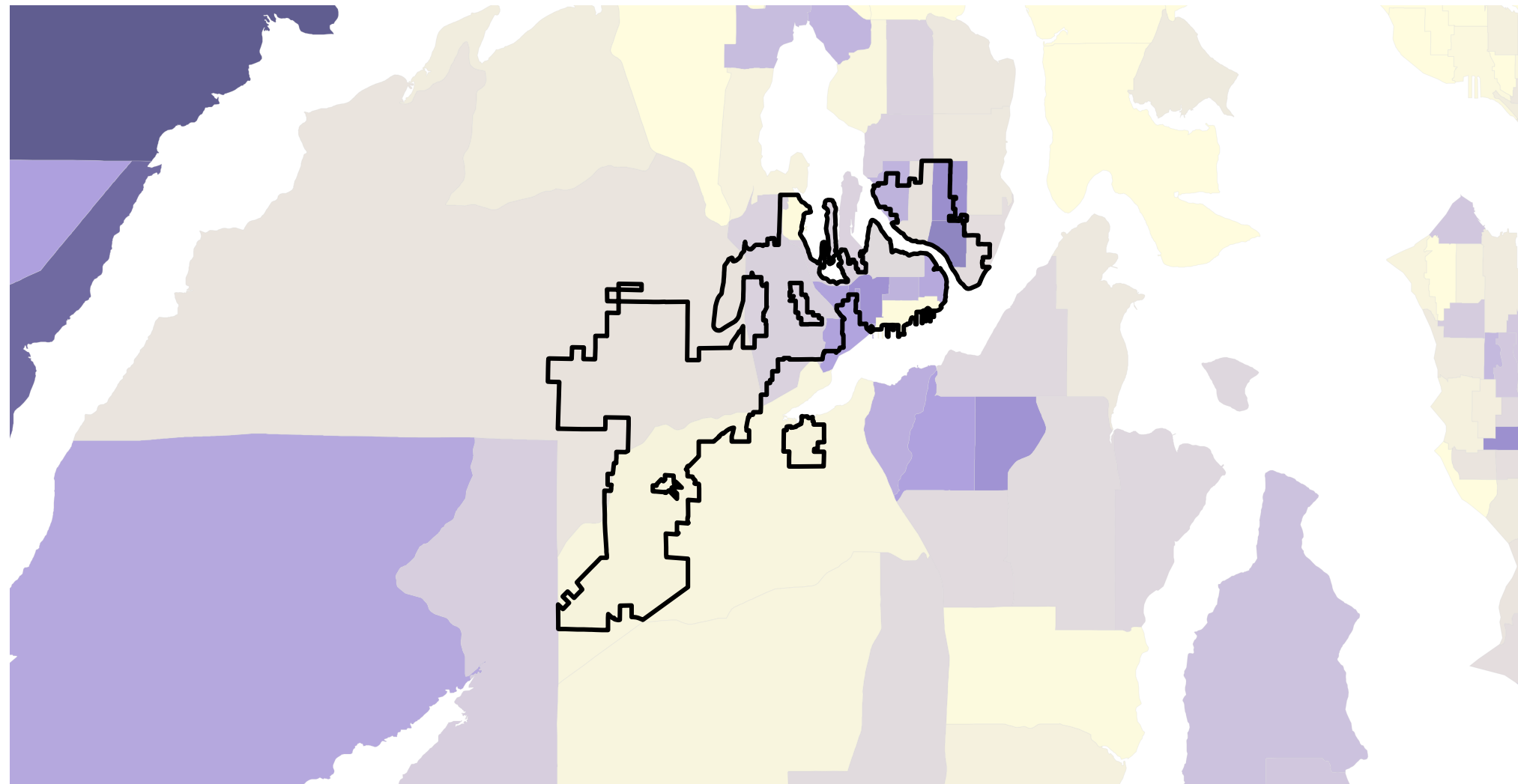
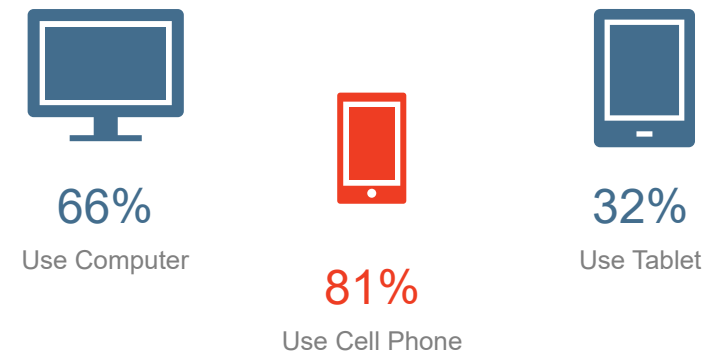
Speak Spanish & No English	0%
Speak Spanish & English Not Well	0%
Speak Indo-European & No English	0%
Speak Indo-European & English Not Well	0%
Speak Asian-Pacific Island & No English	0%
Speak Asian-Pacific Island & English Not Well	0%
Speak Other Language & No English	0%
Speak Other Language & English Not Well	0%

# Bremerton, WA

## DEVICE OWNERSHIP (HH)



## INTERNET ACCESS (HH)



## INTERNET CONNECTIVITY

HH %

2019 Have access to Internet at home (%)	90%
2019 Connect to Internet at home via cable modem (%)	54%
2019 Connect to Internet at home via DSL (%)	10%
2019 Connect to Internet at home via fiber optic (%)	12%
2019 Access Internet at home via high speed connection (%)	89%

## INTERNET & SOCIAL MEDIA USAGE in Last 30 Days

HH %

Visited online blog (%)	16%
Watched TV program online (%)	26%
Used Spanish language website in last app (%)	3%
Facebook.com (%)	71%
Instagram.com (%)	36%
Linkedin.com (%)	14%
Tumblr.com (%)	5%
Twitter.com (%)	17%
Youtube.com (%)	55%
Social network used to track current events (%)	18%
Search engine: bing.com (%)	9%
Search engine: google.com (%)	83%
Search engine: yahoo.com (%)	16%

Percent of Households with No Internet Access

