

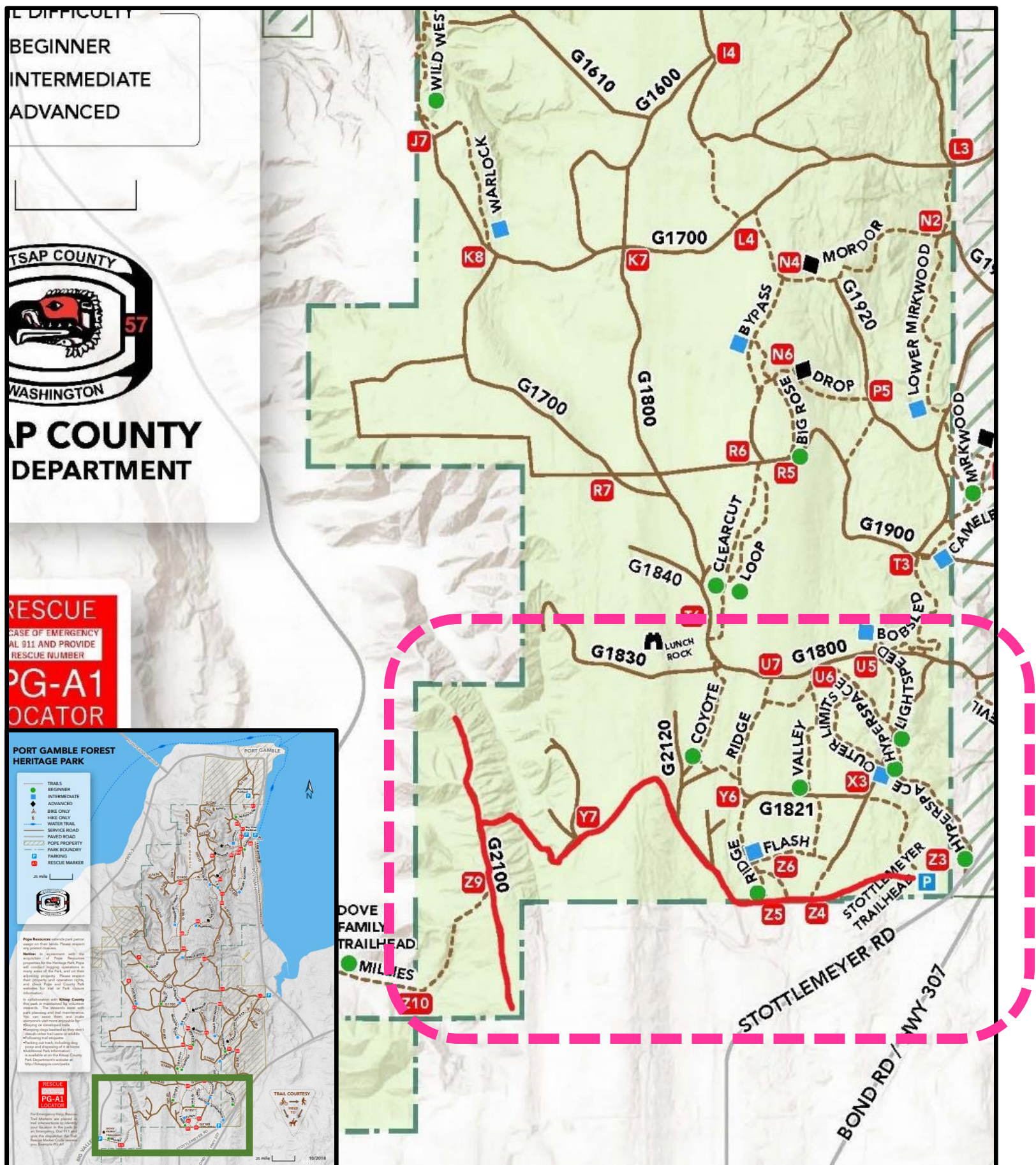
ATTENTION:

Trail sections will be **CLOSED PERIODICALLY** effective **April 23, 2025**, until further notice, due to **Rayonier road maintenance, improvement and construction operations (see map)**.

Closures are in accordance with active work and may change day by day.

Please adhere to trail closure signs for your own safety.

IMPACTED TRAILS: Flash, Ridge, Millies, other trails



- Please exercise caution when entering the park through Stottlemeyer Trailhead on weekdays between the hours of 7:00am and 5:00pm.
- Large trucks will be hauling on the G2100 and newly constructed road from the Stottlemeyer parking lot daily.
- Large trucks and heavy equipment will be operating daily on the all or part of the G2100 and newly constructed road daily
- For more information, please visit www.kitsapgov.com/parks or e-mail parks@kitsap.gov

