

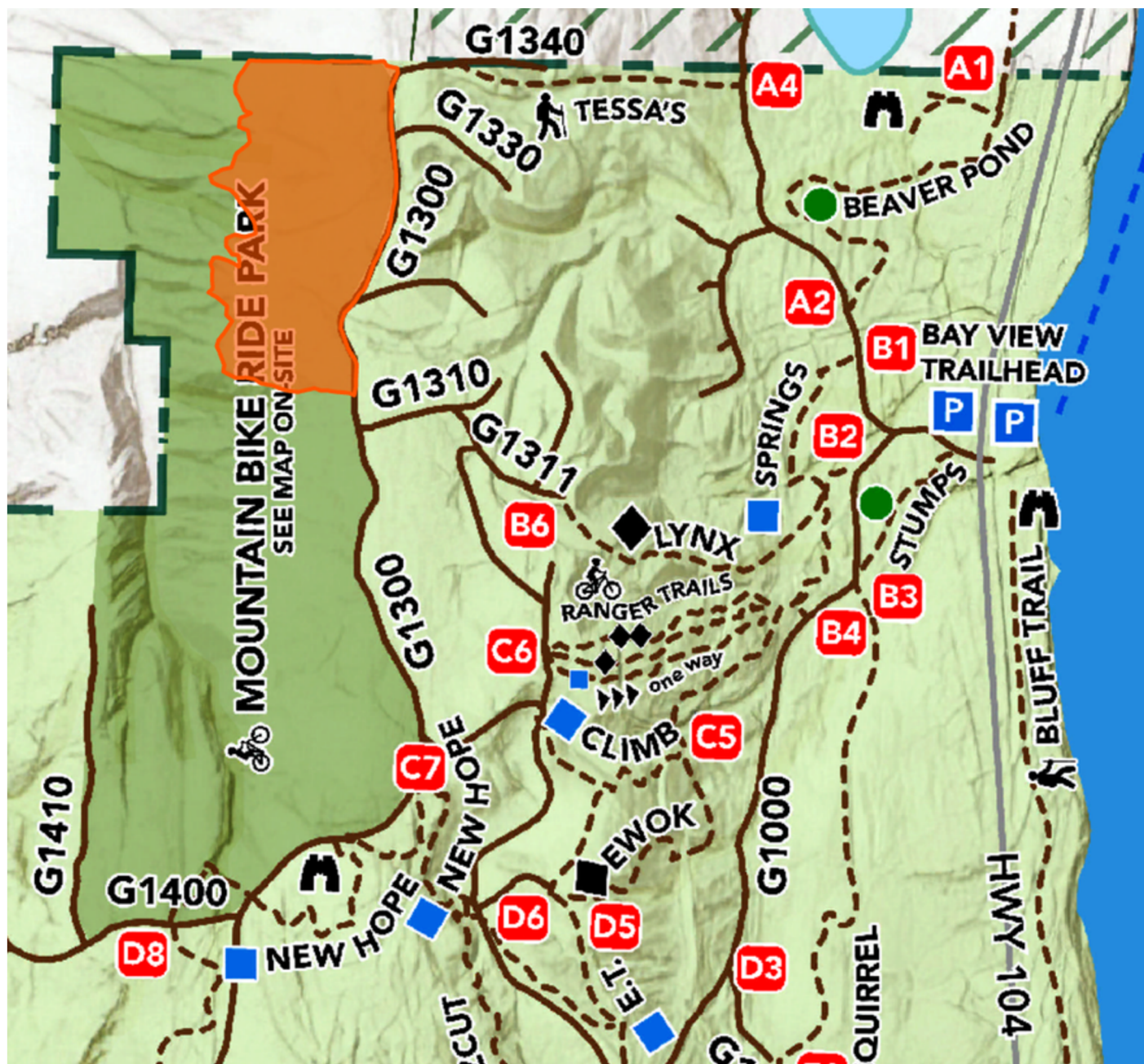
# ATTENTION PARK VISITORS:

## Port Gamble Forest Heritage Park

Due to the Port Gamble 2025 Stewardship and Restoration Project beginning on June 17<sup>th</sup>, the following trails at the north end of the ride park will be **CLOSED UNTIL FURTHER NOTICE**:

- Happy Holidays
- Dirt and Debauchery
- Night Owl
- Yellow Brick Road
- Fortnite
- Steam Donkey
- Trail 4
- Okilly Dokilly

Impacted area shown below in orange:



**STAY AT LEAST 300 FEET AWAY FROM MACHINERY.**

**DO NOT CROSS LOGS IN TRAILS.**

**THESE ARE USED TO CLOSE TRAILS NOT PROVIDE AN EXTRA CHALLENGE**

**FOR MORE INFORMATION, PLEASE VISIT [WWW.KITSAP.GOV/PARKS](http://WWW.KITSAP.GOV/PARKS)  
OR EMAIL [PARKS@KITSAP.GOV](mailto:PARKS@KITSAP.GOV)**





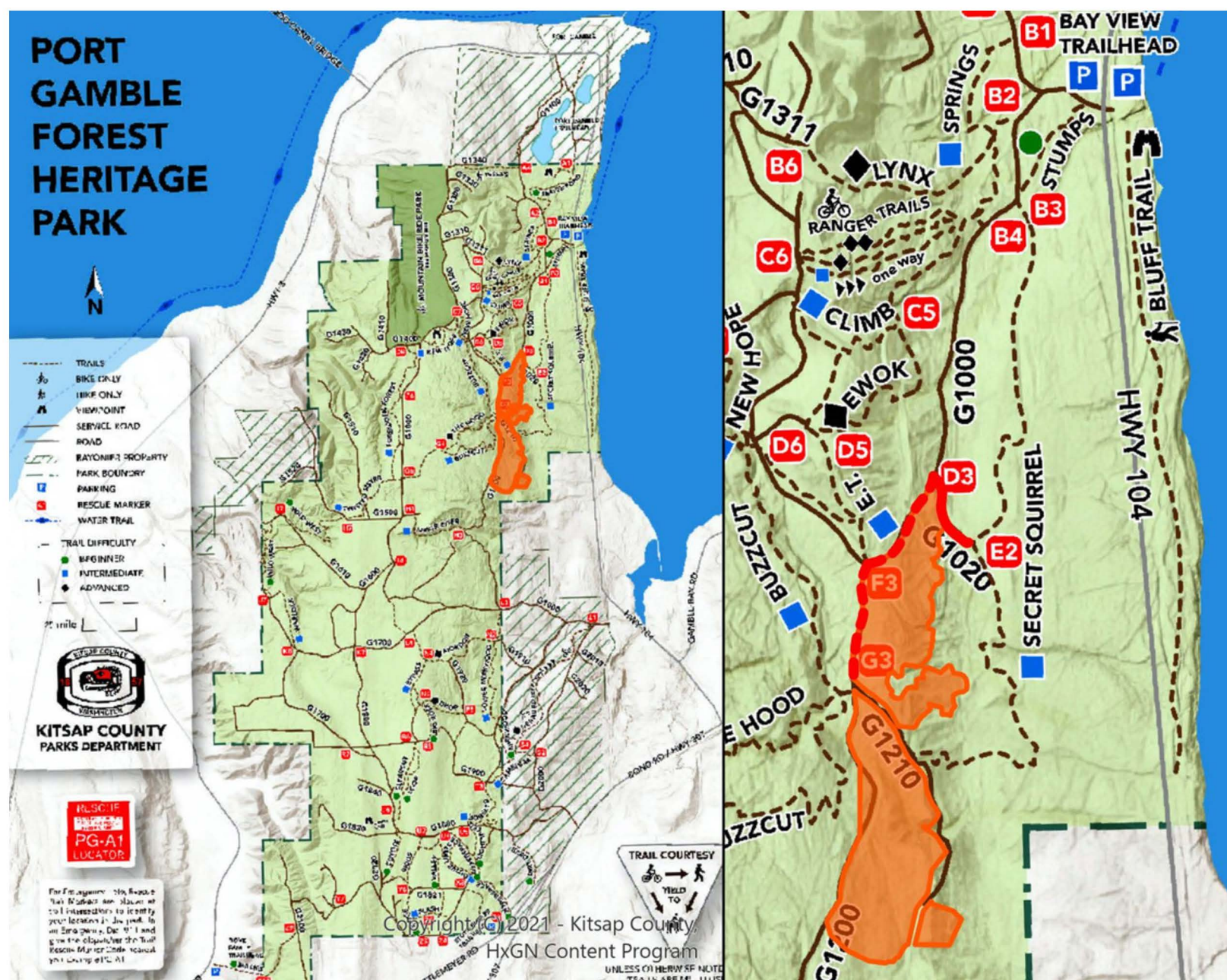
# ATTENTION PARK VISITORS: Port Gamble Forest Heritage Park

In early September, forest restoration activities will begin along the G1000 and G1020 roads.

The Secret Squirrel access trail (G1020) will be  
**CLOSED UNTIL FURTHER NOTICE.**

For park user safety the G1000 road may close intermittently between 7:00am and 4:00pm Monday through Friday.

Impacted area shown below in orange:



**STAY AT LEAST 300 FEET AWAY FROM MACHINERY.**

**FOR MORE INFORMATION, PLEASE VISIT [WWW.KITSAP.GOV/PARKS](http://WWW.KITSAP.GOV/PARKS)  
OR EMAIL [PARKS@KITSAP.GOV](mailto:PARKS@KITSAP.GOV)**

