



Parks Department
1195 NW Fairgrounds Road, Bremerton, WA 98311
Mailing address: 614 Division, MS-1, Port Orchard, WA 98366
Phone (360) 337-5350 • Fax (360) 337-5385
www.kitsapgov.com/parks

Alex Wisniewski, Director

Director's Report

Date: 12/XX/2025 (no meeting in December)
To: Parks Advisory Board
From: Alex Wisniewski, Parks Director

Administration Program

2025 Accomplishments

Please see *Attachment A* Parks' 2025 Accomplishments for a progress report on the department goals that were shared with the Commissioners in January 2025.

Volunteer Program

Program Restructure Update

Park staff have been actively engaged in updating the Volunteer Program to enhance participation, coordination, and program effectiveness. As part of this process, meetings with park stewards were scheduled in late October and early November to gather feedback before presenting the revised program to the Board of County Commissioners. Staff have worked closely with stewardship groups to review and discuss the draft update, and park stewards were invited to provide input to be incorporated as appropriate. The Volunteer Program update was presented to the Board of County Commissioners on December 8.

- *Supports PROS: Goal PR-1, Objective 1.6 (Action 1.6.3), Goal PR-1, Objective 2.2 (Action 2.2.1), Supports PROS: Goal PR-4, Objectives 4.2 (Action 4.2.1),*

Volunteerism By the Numbers and Calendar

- 2025 Volunteer Hours: 46,104 hours, and 348 work parties through 11/30/2025; see *Attachment B*.
- Navy completed their 13th work party of the year.
- Washington Youth Academy completed their 25th work party of the year
- Kitsap Salmon Tours @ Chico Salmon Park
 - November 1 had 450 in attendance
 - November 2 had 400 in attendance
- October Education and Outreach events
 - Olympic High School
 - Klahowya Secondary School
 - Hawk Elementary School
 - South Kitsap High School
 - Chief Kitsap Elementary School
 - Olympic College
 - Virtual salmon field trips for 13 schools

- Supports PROS: Goal PR-2, Objectives, 2.2 (Action 2.2.2), Goal PR-4, Objective 4.2 (Actions 4.2.1, 4.2.2), Objective 4.4 (Actions 4.4.1, 4.4.2, 4.4.5, 4.4.6, 4.4.7), Goal 6.3, Objective 6.3 (Action 6.3.2)

Communications Calendar

In July 2025, Parks communications staff created a “fun” calendar to promote events in Kitsap County Parks on social media in honor of National Park and Recreation Month. Due to the overwhelmingly positive response, the team has decided to continue creating and sharing the calendars each month. The January calendar is attached, please see Attachment C.

- Supports PROS: Goal PR-4, Objective 4.1 (Action 4.1.3)

Events Program

Event Policy Update

Following the approval of the new Event Policies, Event Staff are actively meeting with all 2026 event organizers to communicate policy updates and assist with their transition to the revised procedures and fee schedule.

- Supports PROS: Goal PR-5, Objective 5.1 (Action 5.1.2), Objective 5.3 (Action 5.3.3)

Events By the Numbers and Events Calendar

Data on the number of reservations at each of the Parks Facilities is attached; please see Attachment D.

- Outward-facing events calendar: [Kitsap County Parks Event Calendar \(kitsapgov.com\)](https://www.kitsapgov.com/kitsap-county-parks-event-calendar)
- Online reservations and payment portal: [Kitsap County Parks > Home \(recdesk.com\)](https://www.kitsapgov.com/kitsap-county-parks-home)

January Public Events		
Event	Date	Location
Prance N'Plunge	January 1, 2026	Wildcat Lake Park
Gig Harbor Kennel Club AKC Scent Work	January 9-11, 2026	Kitsap County Fairgrounds & Event Center
Martin Luther King, Jr. Annual Celebration	January 19, 2026	Presidents Hall @ Fairgrounds & Event Center
Freedom Invitational	January 23-25, 2026	Pavilion Fairgrounds & Event Center
West Sound Roller Derby	January 31, 2026	Pavilion Fairgrounds & Event Center

BoCC-Sponsored Events

Event	Status	2025 Attendance
Martin Luther King Jr. Day	January 20, 2025	300
Military Appreciation Day	March 15, 2025	1,200
FARM Days	May 19-20, 2025	3,000
Veterans Day Ceremony	November 11, 2025	500
Toys for Tots	December 13, 2025	

The Commissioner's Office and Parks are partnering on the implementation of 2024 Board-directed changes to the County's event support practices. Changes will be communicated to event organizers in early 2025 in close collaboration with Board members. Implementation of the changes will not take place until 2026.



Parks Department

1195 NW Fairgrounds Road, Bremerton, WA 98311

Mailing address: 614 Division, MS-1, Port Orchard, WA 98366

Phone (360) 337-5350 • Fax (360) 337-5385

www.kitsapgov.com/parks

Alex Wisniewski, Director

Spring and Summer Field Request and Allocations

The Parks Department began accepting rental requests for the Spring and Summer 2026 field schedule (covering March, April, May, June, July, and August) on November 10. The request period closed on December 11. This year, the department received reservation requests from 10 different organizations. Since the volume of rental requests exceeds the capacity of Parks' fields, Parks staff utilized the new Athletic Field Policies guidelines to assist with schedule development. The guidelines are designed to balance needs and support a diverse range of recreational opportunities, and to be as fair and equitable as possible. To accomplish this, the following is the priority in which rental requests are considered:

1. Kitsap County Parks Department co-sponsored programs
2. School District Programs
3. Non-Profit Organizations
4. Private Leagues
5. Private Group, Events, & General Public

In addition to this structure of priority organization types, the department also uses these additional criteria to further help make decisions when competing rental requests are received.

- Benefit to the residents of Kitsap County
- Type of event (national, regional, state, or local)
- Seasonal activities versus non-seasonal activities
- Impact of use on the surrounding neighborhood
- Safety of participants and general Park facility visitors
- Scheduled games versus practices
- Diversity of recreational opportunities
- Field conditions (fields may be closed or subject to limited availability at any time for safety concerns or due to the risk of severe damage to the fields)
- Users in good standing (payments up to date following the applicable payment schedule and requests received according to the allocation timeline),
- Parking availability at the facility.

A breakdown of the field allocation is attached. Please see *Attachment E*.

- Supports PROS: Goal PR-4, Objective 4.2 (Action 4.2.4), Goal PR-5, Objective 5.1 (Action 5.1.2), Objective 5.3 (Action 5.3.3)

Tender Leaves Outdoor Preschool Update

On July 28, the Kitsap County Parks Department approved an agreement with Tender Leaves Outdoor Preschool to operate at Salsbury Point Park beginning in September 2025. Tender Leaves Outdoor Preschool is a nature-based early learning program serving children ages 2.5 to 5, with a mission to support child development through outdoor, experiential learning. Photos from the first few months of operation are included in *Attachment F*.

- Supports PROS: Goal PR-4, Objective 4.4 (Action 4.4.5). Goal PR-5, Objective 5.3 (Action 5.3.3).

Maintenance & Operations Program

Park and Facility Maintenance

In November, visitation drops significantly as field and shelter use declines with the colder, wetter season. This shift allows staff to focus on fall cleanup efforts across several large parks. Winterization of restrooms and water systems continues, along with clearing storm drains and maintaining drainage ditches and culverts. Staff also addressed hazardous or fallen trees and carried out routine seasonal tasks such as leaf blowing and gutter clearing.

- **Lighting Maintenance:** Timers for exterior lights at all buildings, community centers, and the parks office were adjusted for daylight savings. Broken bulbs and emergency exit signs were tested and replaced as needed.
- **Shoreline Protection:** A round rail fence at Arness Roadside Park was relocated away from the shoreline where erosion had undermined the previous alignment. Staff connected with Shore Friendly Kitsap and discussed a pathway forward to investigate embankment stabilization options for both Arness Roadside and Salsbury Point Parks.
- **Kola Kola Repairs:** The playground clatter bridge at Kola Kola Park was repaired and rewelded by staff, minimizing downtime for preschool access to the playground. A non-functioning light in the building was also repaired.
- **Paint Disposal:** Staff collected and sorted over 200 gallons of old paint, which was disposed of through an environmental recycler.
- **Leaf & Debris Removal:** Major efforts to remove leaf cover and organic debris from lawns, parking areas, and hard surfaces were carried out at Horseshoe Lake Park, Long Lake Park, Island Lake Park, Buck Lake Park, Silverdale Waterfront Park, Anderson Hill Athletic Fields, and the Fairgrounds & Events Center.
- **Seasonal Planting:** Staff planted 200 daffodil bulbs in the planting beds at Silverdale Waterfront Park.
- **Traffic Signage:** “Do Not Block Gate” signs were installed at Anderson Hill Athletic Field on Impasse Pl. This was in response to cemetery-related traffic that temporarily blocked a neighbor’s driveway access.
- **Old Mill Park Cleanup:** Multiple work parties were held at Old Mill Park to remove overgrown blackberries in areas previously used for unauthorized camping. This effort was coordinated with the HEART team to help connect campers with shelter resources.
 - *Supports PROS: Goal PR-6, Objective 6.1 (Action 6.1.2, 6.1.3), Objective 6.5 (Action 6.5.2)*

Trail Maintenance

Fall trail maintenance continued in November with corridor clearing at Port Gamble Forest Heritage Park, including Valley, Ridge, Flash and service roads. Organic debris removal and leaf blowing on trails and boardwalks to help reduce mud buildup is ongoing at South Kitsap Regional Park, Harper Park, Eglon and North Kitsap Heritage Park.

- *Supports PROS: Goal PR-6, Objectives 6.3 (Action 6.3.1, 6.3.2), Objective 6.4 (Action 6.4.1)*

Ballfield Maintenance

A typo in last month's briefing incorrectly identified the pest at South Kitsap Regional Park and Bloomquist Park as Japanese Chafer Beetles. The correct taxonomic name is *Amphimallon majale*, commonly known as the European Chafer Beetle, which has only recently been found in western Washington. Staff have reported the presence of this invasive species to the Washington Invasive Species Council.

- Staff developed a monitoring program to track grub populations, define infestation boundaries, and evaluate treatment effectiveness.



Parks Department

1195 NW Fairgrounds Road, Bremerton, WA 98311
Mailing address: 614 Division, MS-1, Port Orchard, WA 98366
Phone (360) 337-5350 • Fax (360) 337-5385
www.kitsapgov.com/parks

Alex Wisniewski, Director

- A multi-year management plan is underway, combining chemical treatment, turf restoration, and integrated pest management strategies to reduce grub populations and restore field conditions.
- *Supports PROS: Goal PR-6, Objective 6.1 (Action 6.1.2, 6.1.3), Objective 6.5 (Action 6.5.2)*

Unplanned Maintenance: Vandalism and HEART Response

Throughout November, staff responded to multiple incidents of vandalism, illegal dumping, and encampment cleanup across the park system:

- **South Kitsap Regional Park:** Multiple small fires were discovered in the dugouts and within the heavily compromised pipe chase near the skatepark, resulting in significant damage to the restroom building. Staff coordinated with DTG to remove a burned porta potty at a cost of \$800. As a result, no restroom facilities will be available on that side of the park during the winter. A porta potty remains open near the playground and picnic shelter. Additionally, to address poor lighting in the skatepark area, staff installed a new light and plan to add floodlights to the top of the restroom building. Risk Management has also contracted a security company to patrol the park twice nightly going forward.
- **Illegal Dumping:** Staff responded to several large-item dumps across various parks, including stacks of pallets, multiple couches, and mattresses. Parks received notification of these issues via community member submission through the SeeClickFix system.
- **Long Lake Community Center Break-In:** The community center was broken into, resulting in a broken window and the theft of a fire extinguisher. The incident was reported to the sheriff.
- **Encampment Cleanup:** Staff conducted cleanup of abandoned encampments at Illahee Preserve Heritage Park, Arness Roadside Park, Veterans Memorial Park, South Kitsap Regional Park, and Old Mill Park.

Natural Resources Program

Forest Stewardship and Restoration Projects

Port Gamble Forest Heritage Park

The 2025 restoration thinning project at Port Gamble Forest Heritage Park is complete. These treatments are designed to help create conditions that facilitate tree growth; increase resiliency to insects, diseases, expected climate change, potential wildfires and improve

habitat quality and ecological function. Thinning preferentially removed smaller trees making more room for remaining larger trees.

- This project covered 90 acres within very dense 40-45 year old forests where there was evidence of decreased forest health
- Approximately 180 snags (standing dead trees) were created to improve wildlife habitat
- 1,600 tons of the thinned smaller trees were retained on site to create wildlife habitat piles and large log analogs.
- 4,600 tons of thinned smaller trees were sent to local mills and will provide timber products for use in fish habitat restoration, creation of paper products, and lumber for house construction.

Next steps for this project include ongoing monitoring and assessment, creation of habitat enhancement features, and targeted underplanting if necessary.

- *Supports PROS: Goal PR-2, Objective 2.1 (Actions 2.1.2, 2.1.3, 2.1.4), Objective 2.2 (Action 2.2.1), Goal PR-3, Objective 3.2*

Environmental Assessments

Contracted environmental assessments is underway at the Eglon Forest property. Biologists and Ecologists from AECOM are performing vegetation mapping and wildlife habitat utilization surveys. This information will be used by Park staff to help identify natural resource management needs, sensitive areas, and inform planning processes. This work will continue in Port Gamble Forest and Coulter Creek Heritage Parks in 2026.

- *Supports PROS: Goal PR-2, Objective 2.1 (Actions 2.1.2, 2.1.3, 2.1.4), Objective 2.2 (Action 2.2.1), Goal PR-3, Objective 3.2 (Action 3.2.1)*

Point No Point Stormwater Drainage

Due to ongoing beaver activity within the stormwater drainage system at Point No Point Park, staff are continuing to notch and remove dams within the drainage channels in accordance with HPA permit guidelines. Notching will occur prior to king tides throughout the winter, and staff will monitor water levels within the drainage channel.

Park Staff recently met with Beavers Northwest, a local non-profit specializing in providing technical advice and assistance to property owners who are experiencing beaver conflicts. In early 2026, Beavers Northwest will meet on-site with the county to explore possible options.

- *Supports PROS: Goal PR-2, Objective 2.1 (Action 2.1.3), Objective 2.2*

Indianola Waterfront Restoration Project

Park staff are collaborating with Suquamish Tribe biologists to implement a restoration project at Indianola Waterfront & Woodland Preserve. Along the waterfront parcel, the back dune plant community is highly impacted by invasive species. This project began in 2024 with site visits, evaluating restoration need, and planning restoration actions. This project consists of removal of invasive species within the back dune and the installation of native plants that will enhance the plant community and are of cultural significance.

Staff from both Parks and the Tribe pulled scotch broom over the summer. A series of volunteer events in early December addressed Himalayan blackberry and English ivy within the planting area. Approximately 500 native plants were installed by staff, volunteers, and students from Chief Kitsap Academy. Parks Natural Resources staff and the Suquamish Tribe biologists will monitor this planting for success and take additional adaptive management actions if needed.

- *Supports PROS: Goal PR-2, Objective 2.1 (Actions 2.1.2, 2.1.3, 2.1.4), Objective 2.2 (Action 2.2.1), Goal PR-3, Objective 3.2*



Parks Department

1195 NW Fairgrounds Road, Bremerton, WA 98311
Mailing address: 614 Division, MS-1, Port Orchard, WA 98366
Phone (360) 337-5350 • Fax (360) 337-5385
www.kitsapgov.com/parks

Alex Wisniewski, Director

Listen-Up Collaborative National Coastal Resilience Fund Grant Update

The Natural Resources team is participating in a local conservation cooperation group called the Listen Up Collaborative. This group connects regional land trusts, forest managers, Tribal staff, public parks staff, and the community at large to share knowledge and resources related to forest management practices that accelerate the development of complex forest conditions to serve bird populations in decline. The group's objectives include identifying and implementing appropriate habitat management practices, establishing acoustic avian monitoring programs, and knowledge sharing.

Earlier in 2025, this group applied for a [National Coastal Resilience Fund](#) grant to support forest restoration work across many of the lands managed by members of the collaborative. Unfortunately, our group was notified recently that it was unsuccessful in this grant application. Parks sought funding through this grant to perform needed young stand thinning in overstocked forests that would have helped department restoration objectives to promote the growth of larger trees and mature forest structural characteristics. Parks will continue to seek other ways to fund this necessary work.

Planning & Capital Program

Planning

Gordon Park Master Plan

Following review and evaluation of all proposals received and interviews with four firms, the County issued a Notice of Intent to Award to Environmental Science Associates (ESA) on December 1st. Staff is working through the contracting process and anticipates that the contract will come before the BoCC for approval in January.

- *Supports PROS: Goal PR-1, Objective 1.3 (Action 1.3.2), Objective 3.2 (Action 3.2.1)*

Park Impact Fee Study

Parks intends to issue a Request for Proposals (RFP) for a park impact fee rate study. The last time Kitsap County conducted a PIF study was in 2003, and the rate was approved at 25% of what the study indicated was necessary to keep up with growth. An updated study and an increased rate approved by the BoCC could alleviate Parks' impact on REET funds for capital projects. Per the Prosecuting Attorney's Office, Parks cannot use REET funds or Park Impact Fees to fund a PIF study. Parks staff would like to discuss a one-time General Fund request with the BoCC. Cost estimate for the study is \$50,000-\$80,000. Staff is currently working on an RFP and will post it in January 2026 and will come back to the Board with submission results and cost.

- *Supports PROS: Goal PR-1, Objective 1.3 (Action 1.3.2), Objective 1.6 (Action 1.6.1)*

Dan Thompson Account Grant

As lead agency on the grant, Kitsap Public Health District is working with Department of Social & Health Services to complete the pre-contract phase. Work is expected to begin in January 2026 and must be completed by June 2027.

- Supports PROS Plan Goal PR-1, Objectives 1.3, Objective 1.4 (Actions 1.4.1 & 1.4.2)*

Capital

Estuary and Salmon Restoration Program Grant

Parks submitted a pre-proposal for an Estuary and Salmon Restoration Program grant through the Beach Restoration Small Grants Program for the Guillemot Cove Shoreline Restoration project. The project includes: (1) cabin and bulkhead removal on the shoreline and (2) trail relocation and estuary enhancement. Virtual site visits are expected to occur December 15th-18th and invites to submit full proposals go out December 19th. Final applications are due March 31, 2026 and award notifications are expected to occur in October 2026. This project is currently scheduled on the CIP for Design, Engineering, & Permits in 2027 and Construction in 2028.

Point No Point Park Beach and Shoreline Repair

Construction is wrapping up and is expected to be complete mid-December. A small celebration will occur following completion to celebrate the project and the re-opening of the park.

➤ Supports PROS: Goal PR-6, Objective 6.5 (Action 6.5.1)

Port Gamble Forest Heritage Park – North Gateway Trailhead

Construction is wrapping up and is expected to be complete by the end of the year.

➤ Supports PROS: Goal PR-4, Objective 4.1 (Action 4.1.2)

Eagle's Nest Deck Replacement

Construction began on November 24th and is anticipated to be completed by the end of the year.

➤ Supports PROS: Goal PR-5, Objective 5.3 (Action 5.3.2), Goal PR-6, Objective 6.5 (Action 6.5.1)

Attachments:

- A. 2025 Accomplishments
- B. Volunteer Program Photos
- C. Social Media Events Calendar
- D. Events Data
- E. Athletic Field Utilization and Rental Data
- F. Tender Leaves Preschool Photos



Parks Department

2025 Goals by Program Area

Administration

- Operations

- Develop operational interface with PW Capital Facilities Division for capital project management (including grant management, and finance) and facility maintenance management
- ~~○ Implement 'locations' in Workday and repurpose TRAK numbers for expense tracking and budget development~~
- ~~○ Participate in and guide Maintenance Evaluation Study for department~~
 - ~~▪ Strategize an implementation plan and begin roll-out~~
- Create contracts or leases for park user groups currently not under contract
- ~~○ Develop strategy to absorb 2026 budget cuts~~

- Projects

- ~~○ Lead and complete PROS Plan update~~
- Develop a staff training program (move to 2026)
- Begin correcting RCO compliance issues
- Participate in new County website development and implementation roll-out (move to 2026)
- Lead and complete land acquisitions at Illahee Preserve Heritage Park (RCO grants)

Planning

- Operations

- ~~○ Hire and onboard new Planner~~
- Develop operational interface with PW Capital Facilities Division for capital project development
- ~~○ Update 6-year Capital Improvement Plan to incorporate PROS plan projects~~
 - ~~▪ Develop evaluation matrix to help determine project priorities~~
- Develop department workplan based on PROS plan goals and objectives (move to 2026)
- Participate in working groups for Year of the Rural, Silverdale Center Plan, and Stormwater Park Planning

- Projects

- ~~○ Assist with completion of PROS Plan~~
- Update Port Gamble Forest Heritage Park Framework with Wildlife Utilization Study results (move to 2026)
- Begin work on Gordon Park Master Plan
- Resurrect past Coulter Creek Heritage Park planning efforts and work with Natural Resources program on vegetation mapping and other environmental evaluations (move to 2027)
- Lead and complete Parks Code update (move to 2026)
- ~~○ Participate in Maintenance Evaluation Study for department~~
- ~~○ Develop evaluation process for capital projects~~
- ~~○ Partner with Kitsap Public Health District to submit an accessibility project for the Dan Thompson Grant~~

Progress Report: December

Black Font: Work has not started

Green Font: Work is underway

~~Red Font: Work is complete~~

Blue Font: Work delayed

Highlight: Work added during the year



Natural Resources

- Operations

- ~~○ Participate in Maintenance Evaluation Study for department~~
- ~~○ Implement forest restoration and stewardship projects~~
- Refine volunteer program functions to improve effectiveness and better align with staff resources and department operations
- ~~○ Developed pre-acquisition environmental assessment protocols to evaluate conservation value of sites proposed for acquisition by the department.~~

- Projects

- Lead and complete Wildlife Utilization Study (Port Gamble Forest Heritage Park, move to 2026)
- Lead and complete Vegetation Mapping (Coulter Creek Heritage Park, move to 2026))
- ~~○ Lead and complete Wildlife Utilization Study and Vegetation Mapping (Egdon)~~
- ~~○ Lead and complete Forest Restoration and Stewardship Policy and Planning update~~
- ~~○ Complete restorative thinning projects at Port Gamble Forest Heritage Park~~
- ~~○ Collaborated with community partners to submit a Trust Land Transfer application for a DNR parcel near Miller Bay.~~
- ~~○ Completed a restoration and culturally important plant enhancement project at Indianola Waterfront & Woodland Preserve in collaboration with the Suquamish Tribe.~~
- ~~○ Evaluated Rude Road parcels for acquisition by department and generated acquisition recommendation report.~~
- ~~○ Collaborated with researchers from UW, WDFW, and DOE to perform various research and monitoring projects on Parks lands.~~
- ~~○ NR Staff presented at education and outreach events hosted by the DCD Noxious Weeds program, WSU Extension, KEC, Rotary groups, local schools, and others.~~

M&O

- Operations

- Continue team development and culture change with staff
- Develop operational interface with PW Capital Facilities Division for facility maintenance
- Build out maintenance management software program (move to 2026)
- ~~○ Developed operational interface with HEART team and defined protocols for responding to unhoused encampments in parks~~
- ~~○ Updated the athletic field annual operations plan to improve conditions~~
- ~~○ Developed a treatment and monitoring plan in response to the European Chafer Beetle infestation at South Kitsap Regional Park~~
- ~~○ Create maintenance and monitoring plan for septic and water well systems across park system~~

- Projects

- ~~○ Lead and complete Maintenance Evaluation Study~~
 - ~~▪ Explore culture dynamics of staff, create improvement steps, and begin implementation~~
 - ~~▪ Investigate operational changes to improve efficiencies for maintenance activities~~
 - Develop maintenance standards for parks and facilities
 - Develop park and/or facility classification system and apply maintenance standards
- Develop turf (natural and synthetic) management program and implement (move to 2026)



- Develop a key/access management system (move to 2026)
- Develop an equipment and vehicle replacement plan
- Various park and facility improvements to signs, trails, HVAC, fire suppression system, lighting, fencing, irrigation, park amenities, maintenance shop
- Assisted in the completion of the wheelchair friendly trail at Illahee Preserve Heritage Park (with Volunteer Program and Park Stewards)
- Initiated SeeClickFix as a way to receive notifications about park issues from the public
- Improve Wildcat Lake Park maintenance grounds, shops, and office building
- Replace softball infields at Bloomquist Rotary Park

Events

- Operations
 - Participate in Maintenance Evaluation Study for department
 - Work with RecDesk to improve reports to meet department needs
 - Develop and implement evaluation matrix and process for park events (involves M&O and NR)
- Projects
 - Lead and complete Event Policies and Fees update
 - Develop naming rights and sponsorship policies (move to 2026)
 - Develop agreement with South Kitsap Girls Softball (Bill Bloomquist Rotary Park)

Capital (Public Works Capital Facilities Division)

- Projects
 - North Gateway Parking Lot & Trailhead (Port Gamble Forest Heritage Park)
 - Phase 2 Beach and Shoreline Construction (Point No Point Park)
 - Replace Eagle's Nest deck (Fairgrounds & Event Center)
 - Gordon 1 Synthetic Turf replacement (Gordon Park)
 - Resurface tennis courts (Suquamish and Indianola)
 - Install water taps at Mountain Bike Ride Park (Port Gamble Forest Heritage Park)
 - Demo or repurpose Callison House (Gordon Park)
 - Complete land acquisitions (Illlahee Preserve Heritage Park)



Kitsap Salmon Tours @ Chico Salmon Park



Kitsap Salmon Tours @ Chico Salmon Park

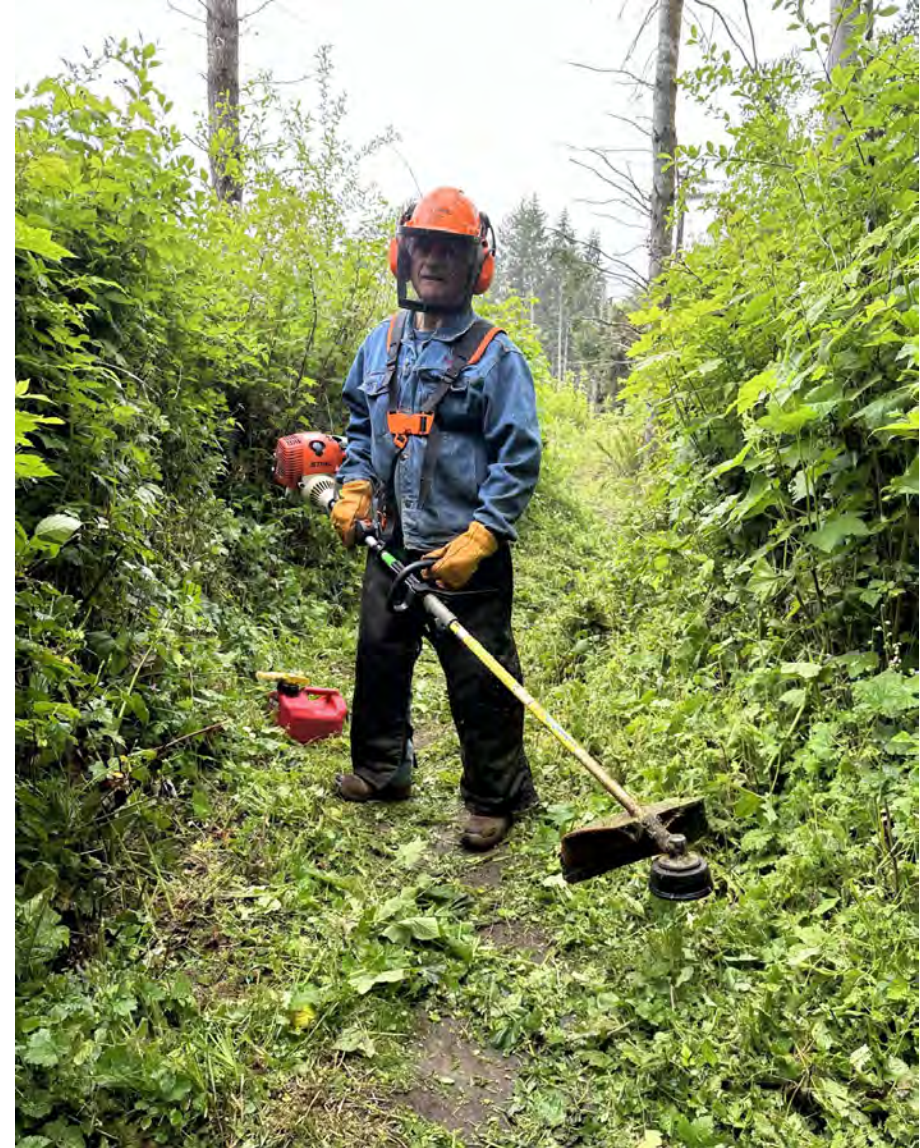


Kitsap Salmon Tours @ Chico Salmon Park



Coulter Creek Heritage Park Stewards

Hansville Greenway Park Steward





South Kitsap High School @ Howe Farm



Newberry Hill Heritage Park Stewards





Central Kitsap School District Career Fairs



Washington Youth Academy

2026

JANUARY

FIND YOUR PARK: WWW.KITSAP.GOV/PARKS



KitsapCounty
Parks

SUN

MON

TUE

WED

THU

FRI

SAT

 PUBLIC
EVENTS

 HOLIDAYS
& ACTIVITY
IDEAS

4

**WINTER BIRD
WATCHING**

Grab some binoculars
and see which wild
birds species you
can spot

11

**GIG HARBOR
KENNEL CLUB
AKC SCENT WORK**

Kitsap County
Fairgrounds

18

**FREEDOM
INVITATIONAL
GYMNASTICS**

Kitsap County
Fairgrounds

5

12

**EVERGREEN
IDENTIFICATION**

Learn about different
evergreen trees and
see how many types
are in your park

19

**MARTIN LUTHER
KING JR. DAY
CELEBRATION**

10am - 1pm
Kitsap County
Fairgrounds

26

A QUIET MONDAY

A Quiet Place Park is
a great park to
appreciate nature
and beautiful scenery

6

LICHEN HUNT

Lichen grows in all
shapes and colors,
so search for
different types on
tress, stumps, and
fallen logs

13

20

TACO TUESDAY

Enjoy some tacos on
the water at Old Mill
Park, located next to
a well known bell-
themed taco place

27

7

NEW YEAR'S EVE

14

WINTER HIKE

Hansville Greenway
becomes a winter
wonderland when the
trails are covered in
snow or frost

21

**SQUIRREL
APPRECIATION DAY**

See if you can spot
any of these cute
creatures that live in
our parks

28

8

**1
NEW YEAR'S DAY**

PRANCE N PLUNGE

10am - 12pm
Wildcat Lake Park

15

22

**WINTER
PHOTOGRAPHY**

Take some unique
winter photos at your
favorite park, and
share with us on
social media

2

**9
GIG HARBOR
KENNEL CLUB
AKC SCENT WORK**

Kitsap County
Fairgrounds

16

**THROW A DISC
AROUND**

Test your skills at the
Kitsap County
Fairgrounds Disc Golf
Course

23

**FREEDOM
INVITATIONAL
GYMNASTICS**

Kitsap County
Fairgrounds

30

3

1ST SATURDAY

Celebrate the first
Saturday of 2026 by
getting some fresh air
and exercise at your
favorite park

10

**GIG HARBOR
KENNEL CLUB
AKC SCENT WORK**

Kitsap County
Fairgrounds

17

EAGLE WATCHING

Winter is a great time
to spot eagles. Go to
Guillemot Cove or
Nicks Lagoon for

24

**FREEDOM
INVITATIONAL
GYMNASTICS**

Kitsap County
Fairgrounds

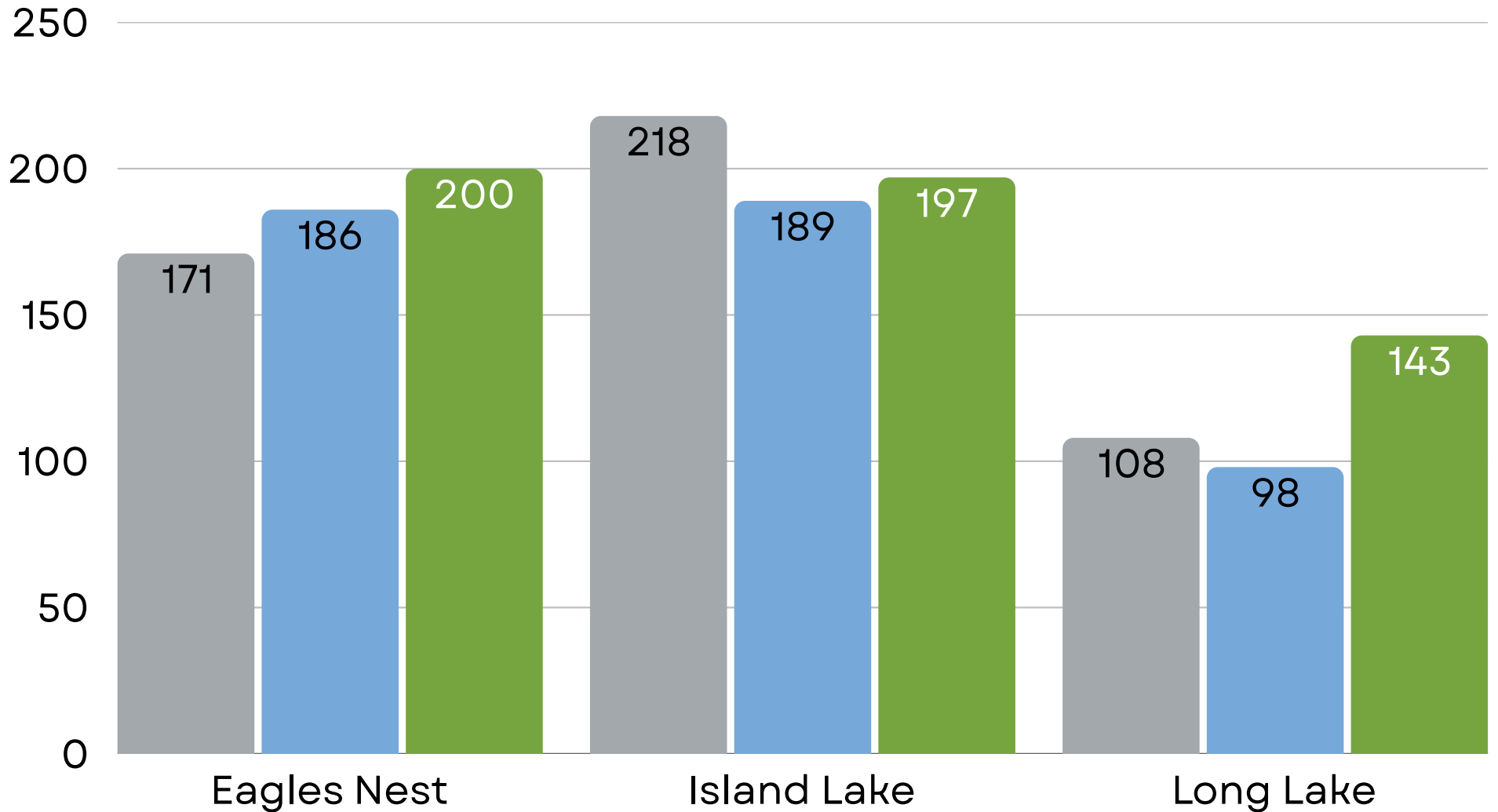
31

**WEST SOUND
ROLLER DERBY**

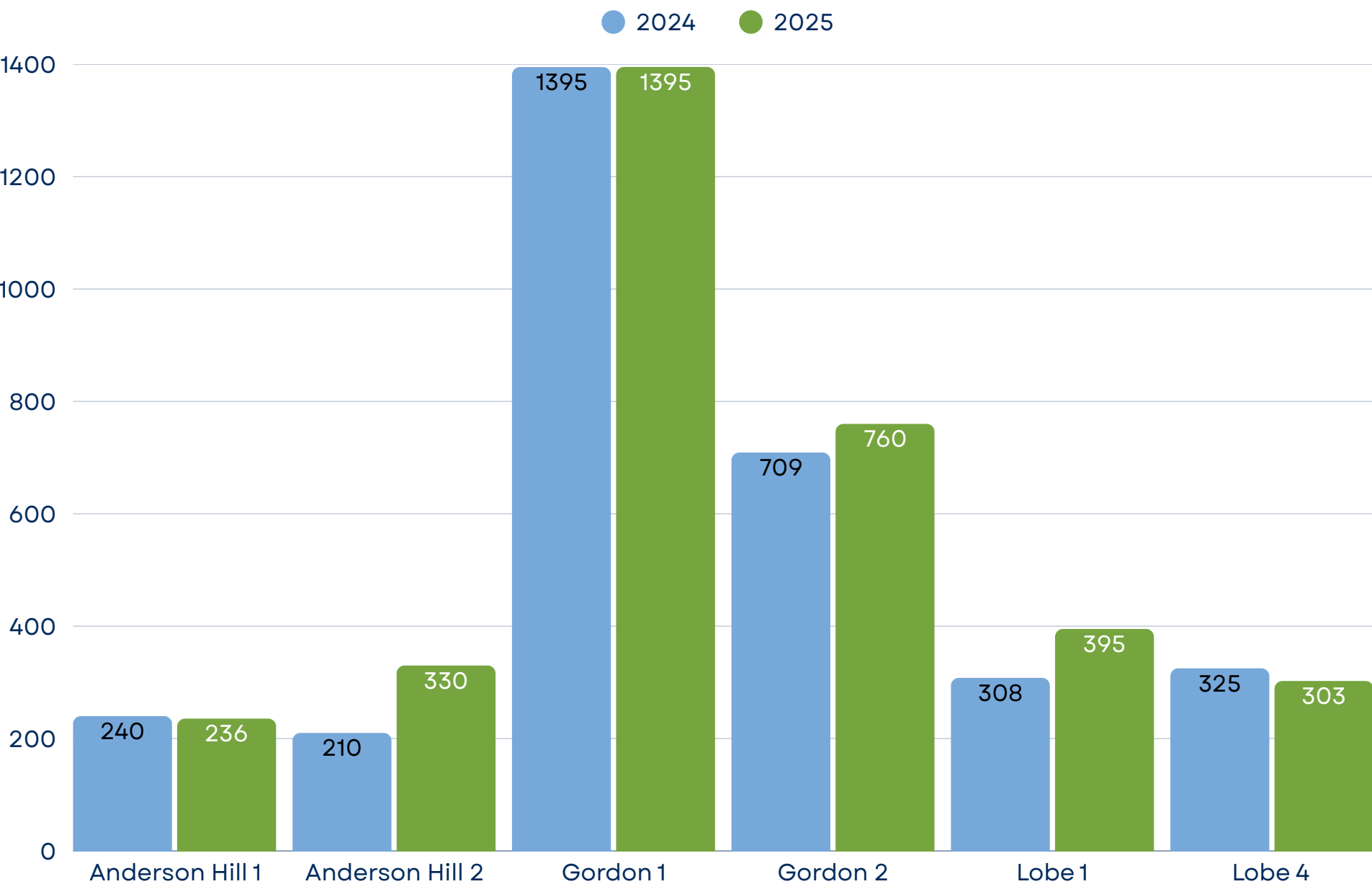
1pm - 5pm
Kitsap County
Fairgrounds

COMMUNITY BUILDING RENTALS

● 2023 ● 2024 ● 2025

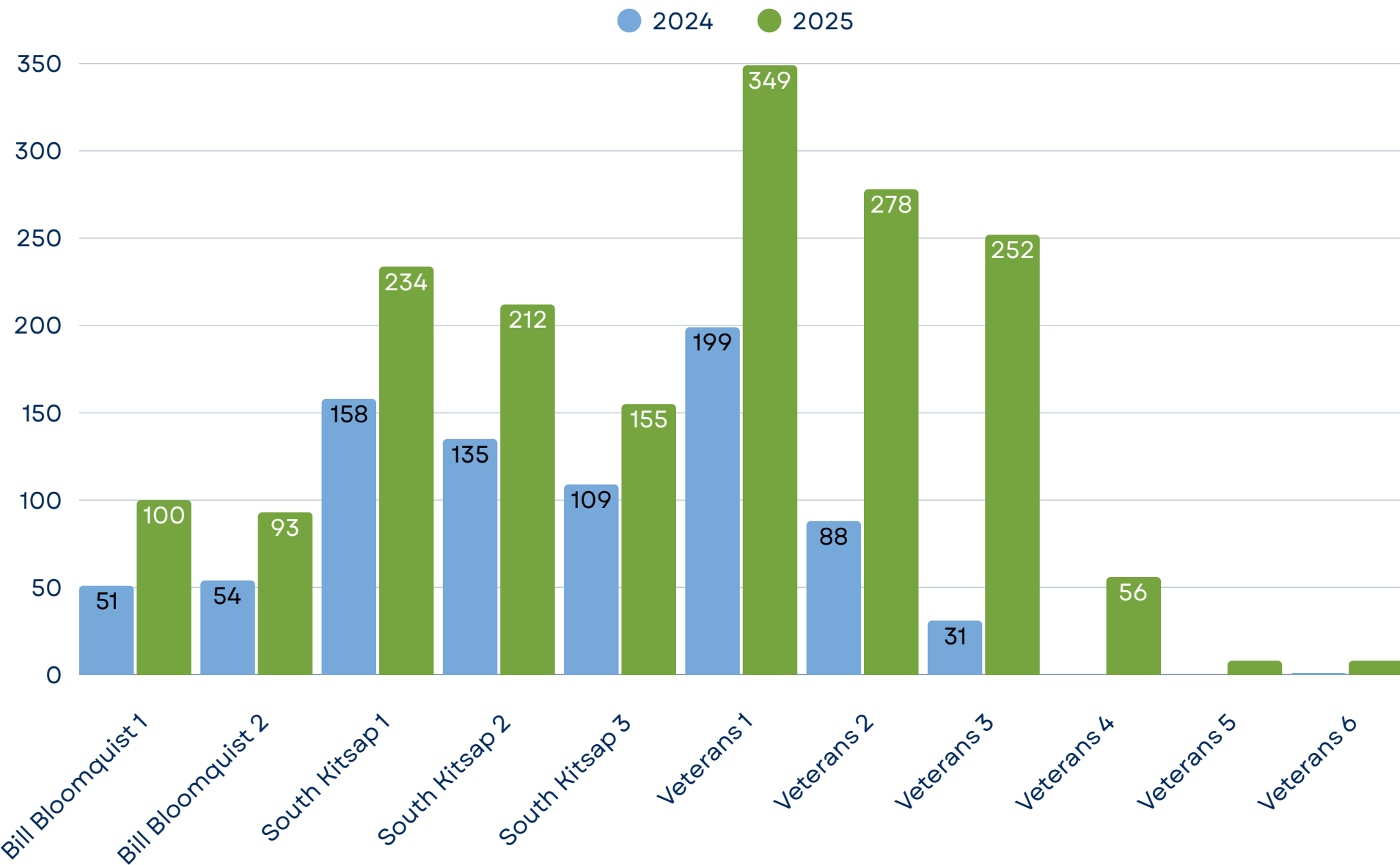


ATHLETIC FIELD USAGE IN HOURS CENTRAL

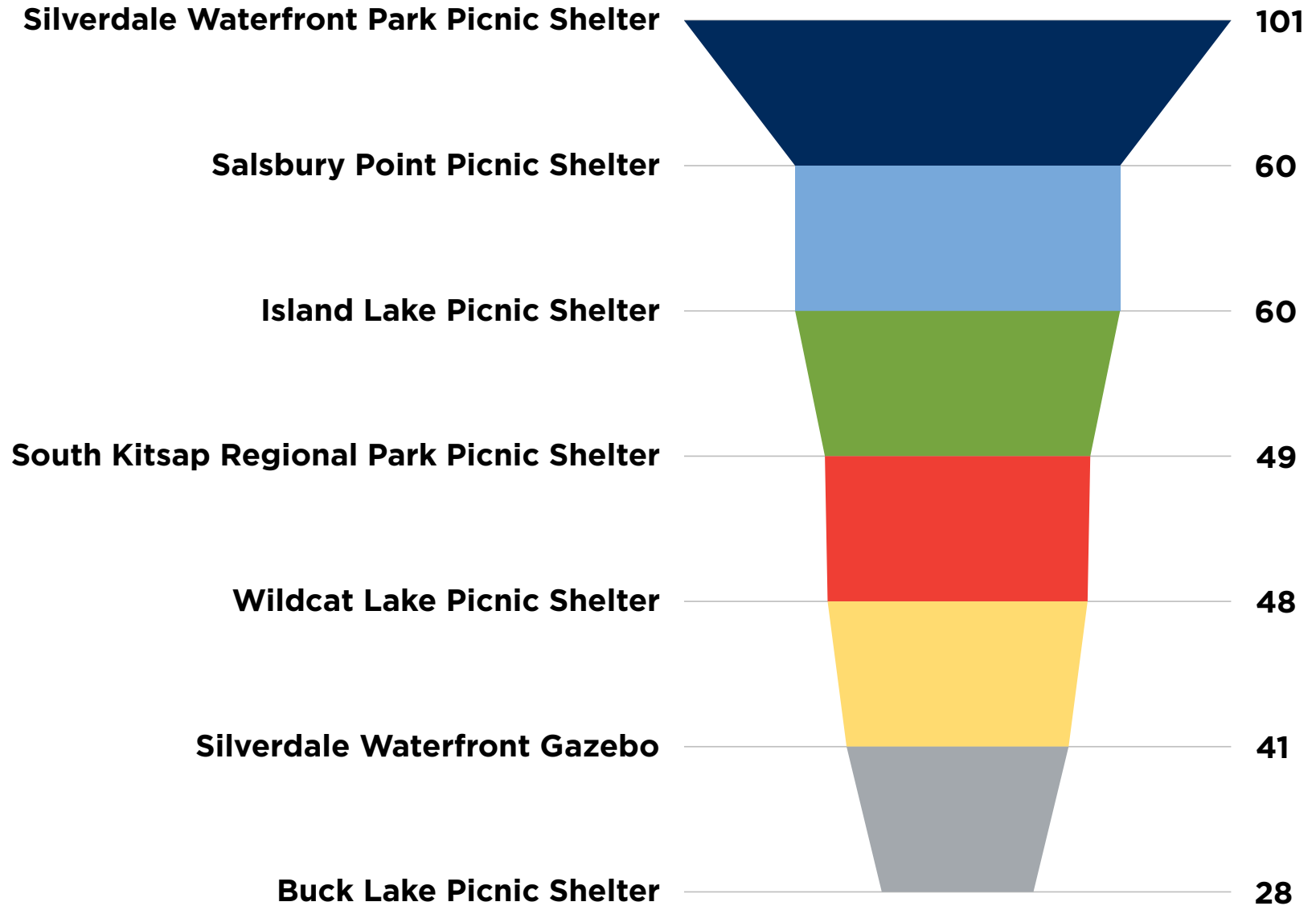


ATHLETIC FIELD USAGE IN HOURS

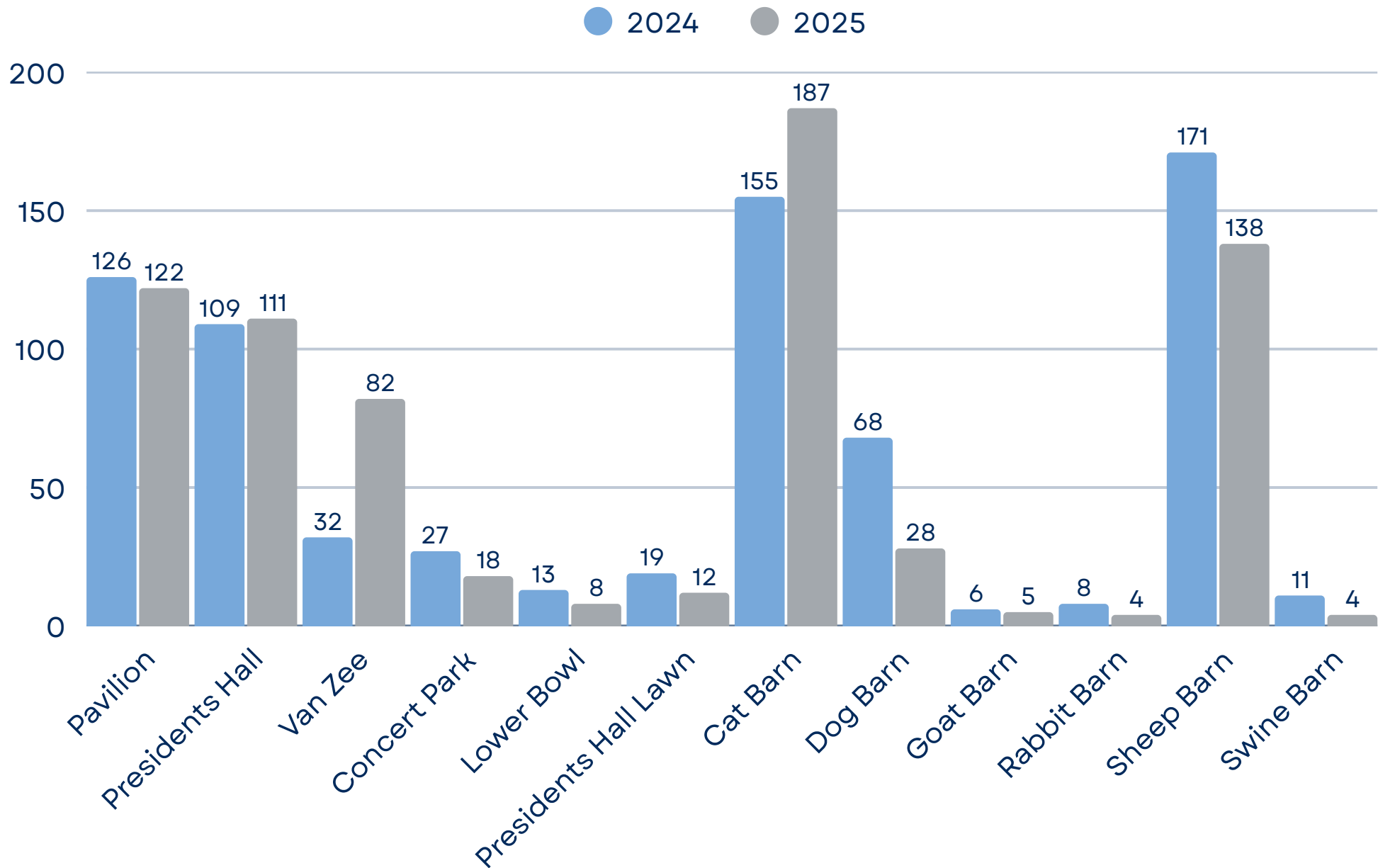
SOUTH



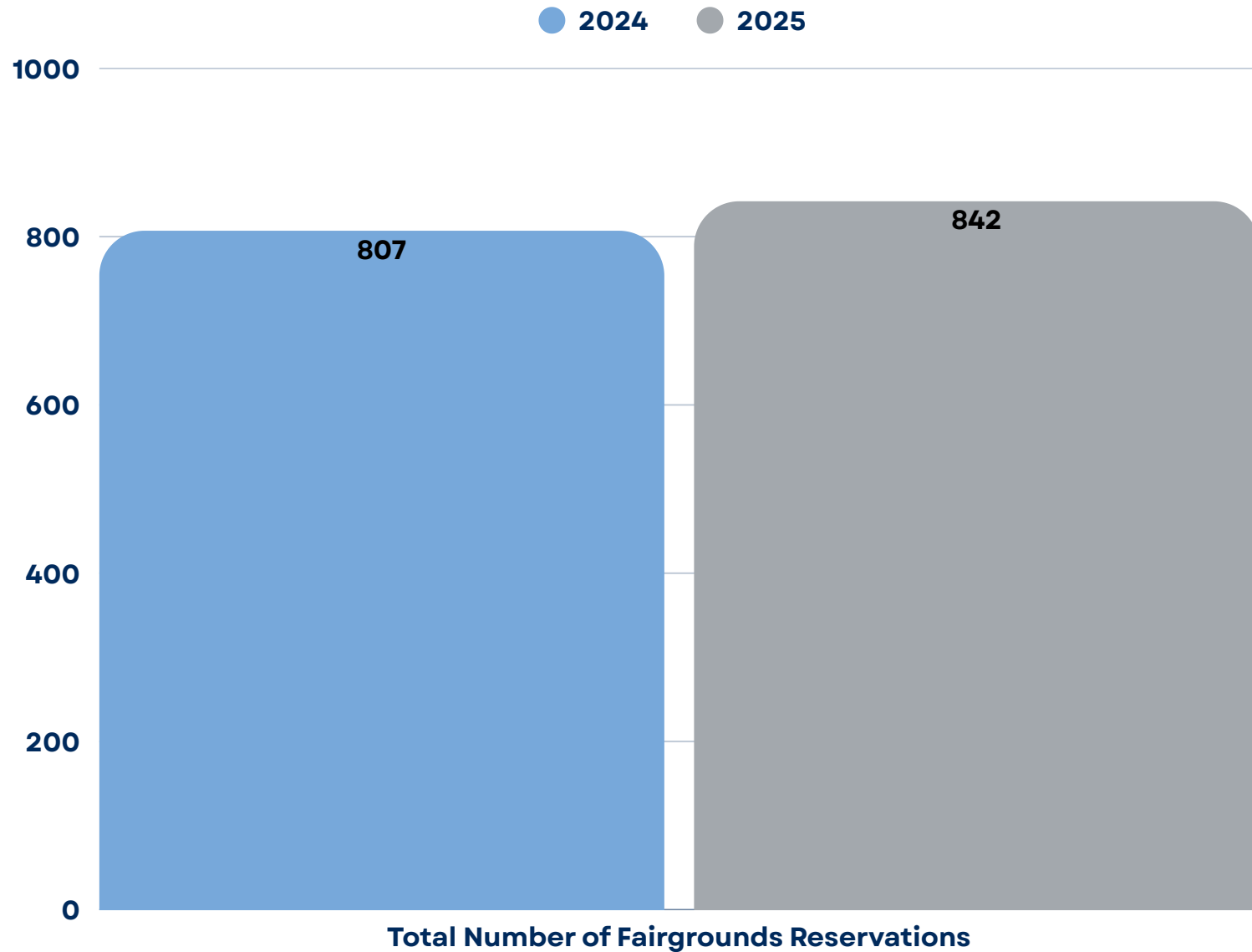
PICNIC SHELTER RENTAL DAYS



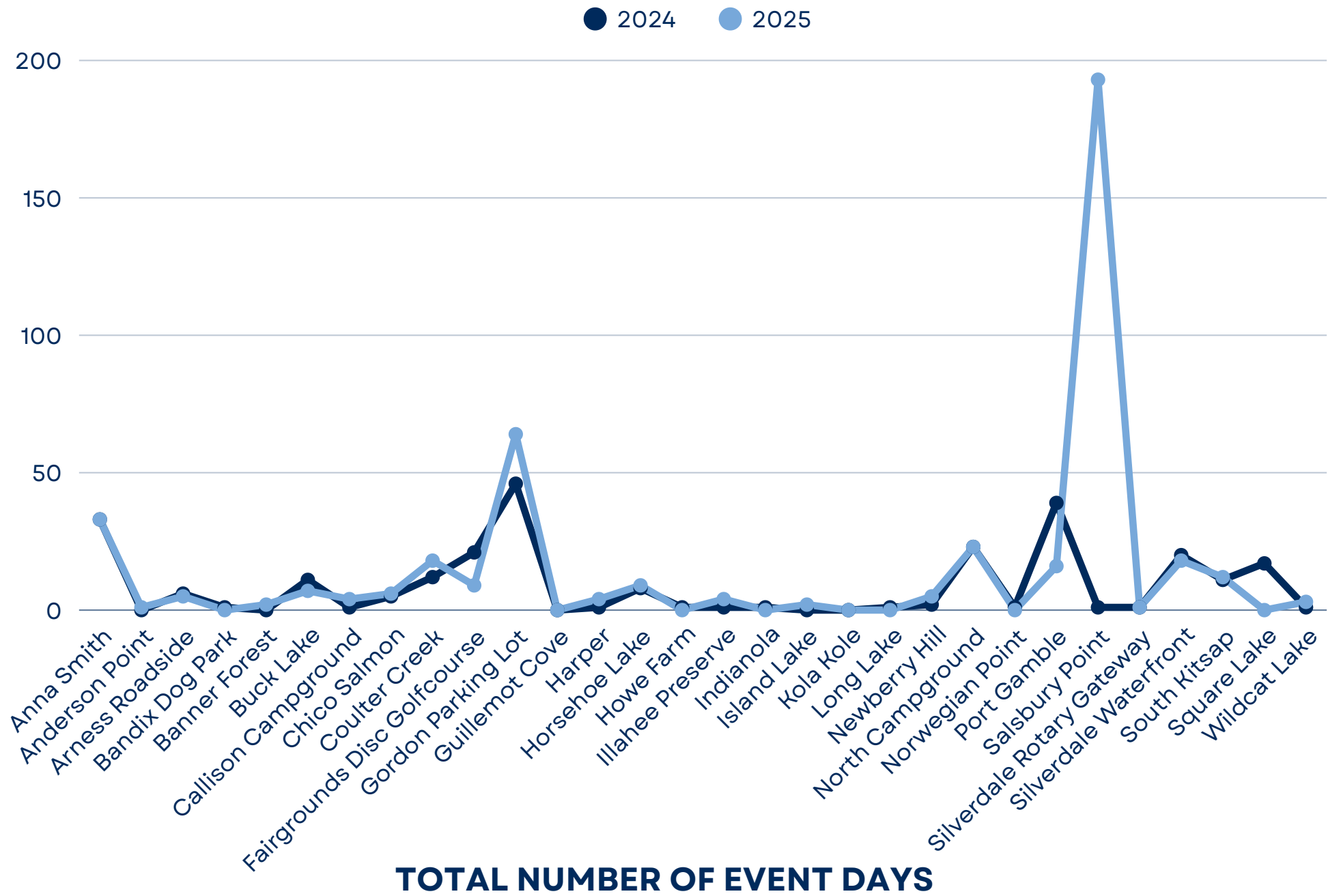
FAIRGROUNDS EVENT DAYS



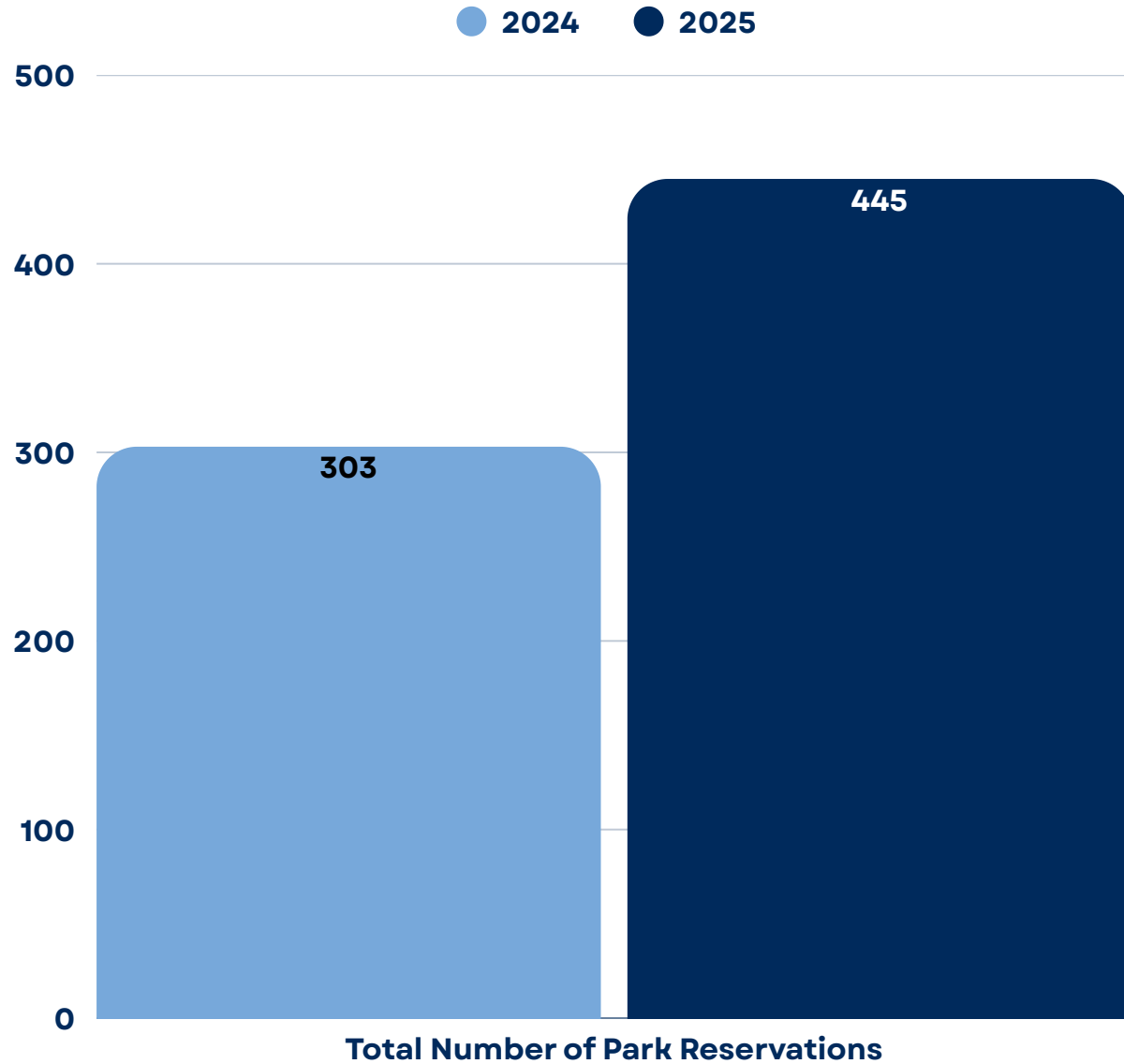
FAIRGROUNDS EVENT DAYS



SPECIAL PARK EVENT DAYS



SPECIAL PARK EVENT DAYS



TOTAL NUMBER OF EVENT DAYS

Spring/Summer 2026 - Reservation Hours by User Group and Field																											
	Olympic High School			Kitsap Alliance		Tracyton Soccer Club		Cross Point High School		YMCA		South Kitsap Soccer Club		Home School Program		NW Blaze		League Joe		South Kitsap Girls Softball		Mariner Grand Slam		TOTAL			
Total Number of Requested Field Usage Hours	440.00			869.00		671.00		84.00		291.75		787.50		0.00		90.00		424.00		320.00		372.00		4349.25			
	Accommodated	Denied		Accommodated	Denied	Accommodated	Denied	Accommodated	Denied	Accommodated	Denied	Accommodated	Denied	Accommodated	Denied	Accommodated	Denied	Accommodated	Denied	Accommodated	Denied	Accommodated	Denied	Accommodated	Denied	Combined Total	
Anderson 1	0.00 0.00%	0.00 0.00%		102.00 20.69%	167.00 33.87%	0.00 0.00%	0.00 0.00%	0.00 0.00%	0.00 0.00%	224.00 45.44%	0.00 0.00%	0.00 0.00%	0.00 0.00%	0.00 0.00%	0.00 0.00%	0.00 0.00%	0.00 0.00%	0.00 0.00%	0.00 0.00%	0.00 0.00%	0.00 0.00%	0.00 0.00%	0.00 0.00%	326.00 66.13%	167.00 33.87%	493.00	
Anderson 2	0.00 0.00%	0.00 0.00%		138.00 100.00%	0.00 0.00%	0.00 0.00%	0.00 0.00%	0.00 0.00%	0.00 0.00%	0.00 0.00%	0.00 0.00%	0.00 0.00%	0.00 0.00%	0.00 0.00%	0.00 0.00%	0.00 0.00%	0.00 0.00%	0.00 0.00%	0.00 0.00%	0.00 0.00%	0.00 0.00%	0.00 0.00%	0.00 0.00%	138.00 100.00%	0.00 0.00%	138.00	
Gordon Field 1	0.00 0.00%	0.00 0.00%		276.00 42.46%	36.00 5.54%	255.00 39.23%	39.00 6.00%	44.00 6.77%	0.00 0.00%	0.00 0.00%	0.00 0.00%	0.00 0.00%	0.00 0.00%	0.00 0.00%	0.00 0.00%	0.00 0.00%	0.00 0.00%	0.00 0.00%	0.00 0.00%	0.00 0.00%	0.00 0.00%	0.00 0.00%	0.00 0.00%	575.00 88.46%	75.00 11.54%	650.00	
Gordon Field 2	0.00 0.00%	0.00 0.00%		0.00 0.00%	0.00 0.00%	303.00 68.13%	74.00 16.84%	0.00 0.00%	0.00 0.00%	60.75 13.66%	7.00 1.57%	0.00 0.00%	0.00 0.00%	0.00 0.00%	0.00 0.00%	0.00 0.00%	0.00 0.00%	0.00 0.00%	0.00 0.00%	0.00 0.00%	0.00 0.00%	0.00 0.00%	0.00 0.00%	363.75 81.79%	81.00 18.21%	444.75	
Lobe 1	221.00 49.00%	0.00 0.00%		42.00 9.31%	42.00 9.31%	0.00 0.00%	0.00 0.00%	33.00 7.32%	7.00 1.55%	0.00 0.00%	0.00 0.00%	0.00 0.00%	0.00 0.00%	0.00 0.00%	0.00 0.00%	66.00 14.63%	14.00 3.10%	0.00 0.00%	0.00 0.00%	0.00 0.00%	0.00 0.00%	26.00 5.76%	0.00 0.00%	388.00 86.03%	63.00 13.97%	451.00	
Lobe 4	219.00 88.22%	0.00 0.00%		66.00 20.56%	0.00 0.00%	0.00 0.00%	0.00 0.00%	0.00 0.00%	0.00 0.00%	0.00 0.00%	0.00 0.00%	0.00 0.00%	0.00 0.00%	0.00 0.00%	0.00 0.00%	10.00 3.12%	0.00 0.00%	0.00 0.00%	0.00 0.00%	0.00 0.00%	0.00 0.00%	26.00 8.10%	0.00 0.00%	321.00 100.00%	0.00 0.00%	321.00	
South Kitsap Regional Field 1	0.00 0.00%	0.00 0.00%		0.00 0.00%	0.00 0.00%	0.00 0.00%	0.00 0.00%	0.00 0.00%	0.00 0.00%	0.00 0.00%	0.00 0.00%	0.00 0.00%	0.00 0.00%	0.00 0.00%	0.00 0.00%	0.00 0.00%	0.00 0.00%	212.00 100.00%	0.00 0.00%	0.00 0.00%	0.00 0.00%	0.00 0.00%	0.00 0.00%	212.00 100.00%	0.00 0.00%	212.00	
South Kitsap Regional Field 2	0.00 0.00%	0.00 0.00%		0.00 0.00%	0.00 0.00%	0.00 0.00%	0.00 0.00%	0.00 0.00%	0.00 0.00%	0.00 0.00%	0.00 0.00%	0.00 0.00%	0.00 0.00%	0.00 0.00%	0.00 0.00%	0.00 0.00%	0.00 0.00%	212.00 100.00%	0.00 0.00%	0.00 0.00%	0.00 0.00%	0.00 0.00%	0.00 0.00%	212.00 100.00%	0.00 0.00%	212.00	
South Kitsap Regional Field 3	0.00 0.00%	0.00 0.00%		0.00 0.00%	0.00 0.00%	0.00 0.00%	0.00 0.00%	0.00 0.00%	0.00 0.00%	0.00 0.00%	0.00 0.00%	0.00 0.00%	0.00 0.00%	0.00 0.00%	0.00 0.00%	0.00 0.00%	0.00 0.00%	0.00 0.00%	0.00 0.00%	160.00 50.00%	0.00 0.00%	160.00 50.00%	0.00 0.00%	320.00 100.00%	0.00 0.00%	320.00	
Bloomquist Field 1	0.00 0.00%	0.00 0.00%		0.00 0.00%	0.00 0.00%	0.00 0.00%	0.00 0.00%	0.00 0.00%	0.00 0.00%	0.00 0.00%	0.00 0.00%	0.00 0.00%	0.00 0.00%	0.00 0.00%	0.00 0.00%	0.00 0.00%	0.00 0.00%	0.00 0.00%	0.00 0.00%	0.00 0.00%	160.00 50.00%	0.00 0.00%	160.00 50.00%	0.00 0.00%	320.00 100.00%	0.00 0.00%	320.00
Bloomquist Field 2	0.00 0.00%	0.00 0.00%		0.00 0.00%	0.00 0.00%	0.00 0.00%	0.00 0.00%	0.00 0.00%	0.00 0.00%	0.00 0.00%	0.00 0.00%	0.00 0.00%	0.00 0.00%	0.00 0.00%	0.00 0.00%	0.00 0.00%	0.00 0.00%	0.00 0.00%	0.00 0.00%	0.00 0.00%	0.00 0.00%	0.00 0.00%	0.00 0.00%	0.00 0.00%	0.00 0.00%	0.00	
Veterans Field 1	0.00 0.00%	0.00 0.00%		0.00 0.00%	0.00 0.00%	0.00 0.00%	0.00 0.00%	0.00 0.00%	0.00 0.00%	0.00 0.00%	0.00 0.00%	262.50 100.00%	0.00 0.00%	0.00 0.00%	0.00 0.00%	0.00 0.00%	0.00 0.00%	0.00 0.00%	0.00 0.00%	0.00 0.00%	0.00 0.00%	0.00 0.00%	0.00 0.00%	262.50 100.00%	0.00 0.00%	262.50	
Veterans Field 2	0.00 0.00%	0.00 0.00%		0.00 0.00%	0.00 0.00%	0.00 0.00%	0.00 0.00%	0.00 0.00%	0.00 0.00%	0.00 0.00%	0.00 0.00%	262.50 100.00%	0.00 0.00%	0.00 0.00%	0.00 0.00%	0.00 0.00%	0.00 0.00%	0.00 0.00%	0.00 0.00%	0.00 0.00%	0.00 0.00%	0.00 0.00%	0.00 0.00%	262.50 100.00%	0.00 0.00%	262.50	
Veterans Field 3	0.00 0.00%	0.00 0.00%		0.00 0.00%	0.00 0.00%	0.00 0.00%	0.00 0.00%	0.00 0.00%	0.00 0.00%	0.00 0.00%	0.00 0.00%	262.50 100.00%	0.00 0.00%	0.00 0.00%	0.00 0.00%	0.00 0.00%	0.00 0.00%	0.00 0.00%	0.00 0.00%	0.00 0.00%	0.00 0.00%	0.00 0.00%	0.00 0.00%	262.50 100.00%	0.00 0.00%	262.50	
TOTAL	440.00 100.00%	0.00 0.00%		624.00 71.81%	245.00 28.19%	558.00 83.16%	113.00 16.84%	77.00 91.67%	7.00 8.33%	284.75 97.60%	7.00 2.40%	787.50 100.00%	0.00 0.00%	0.00 0.00%	0.00 0.00%	76.00 84.44%	14.00 15.56%	424.00 100.00%	0.00 0.00%	320.00 100.00%	0.00 0.00%	372.00 100.00%	0.00 0.00%	3963.25 91.12%	386.00 8.88%	4349.25	
Prepared December 2, 2025																											



Tender Leaves Outdoor Preschool @ Salisbury Point Park

Photo Credits: Mary Zell