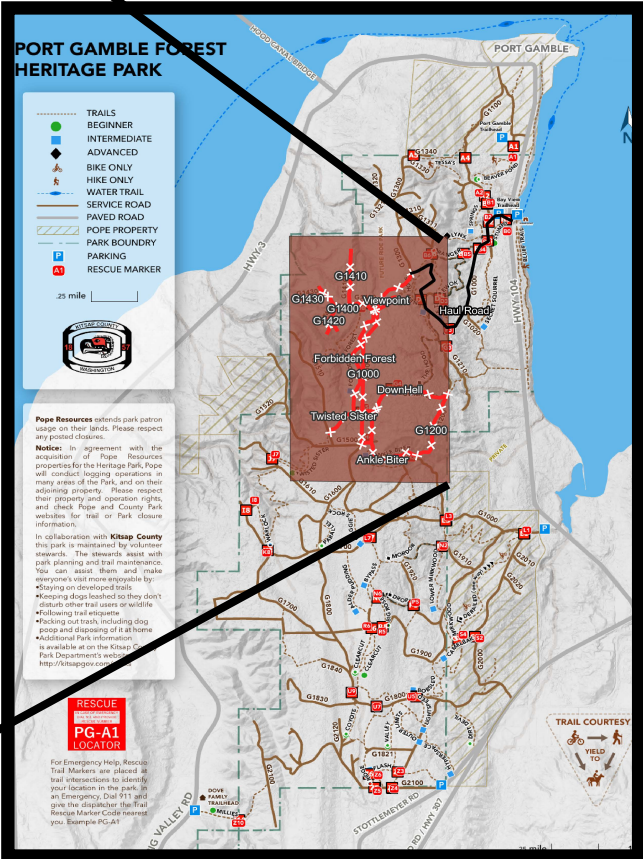
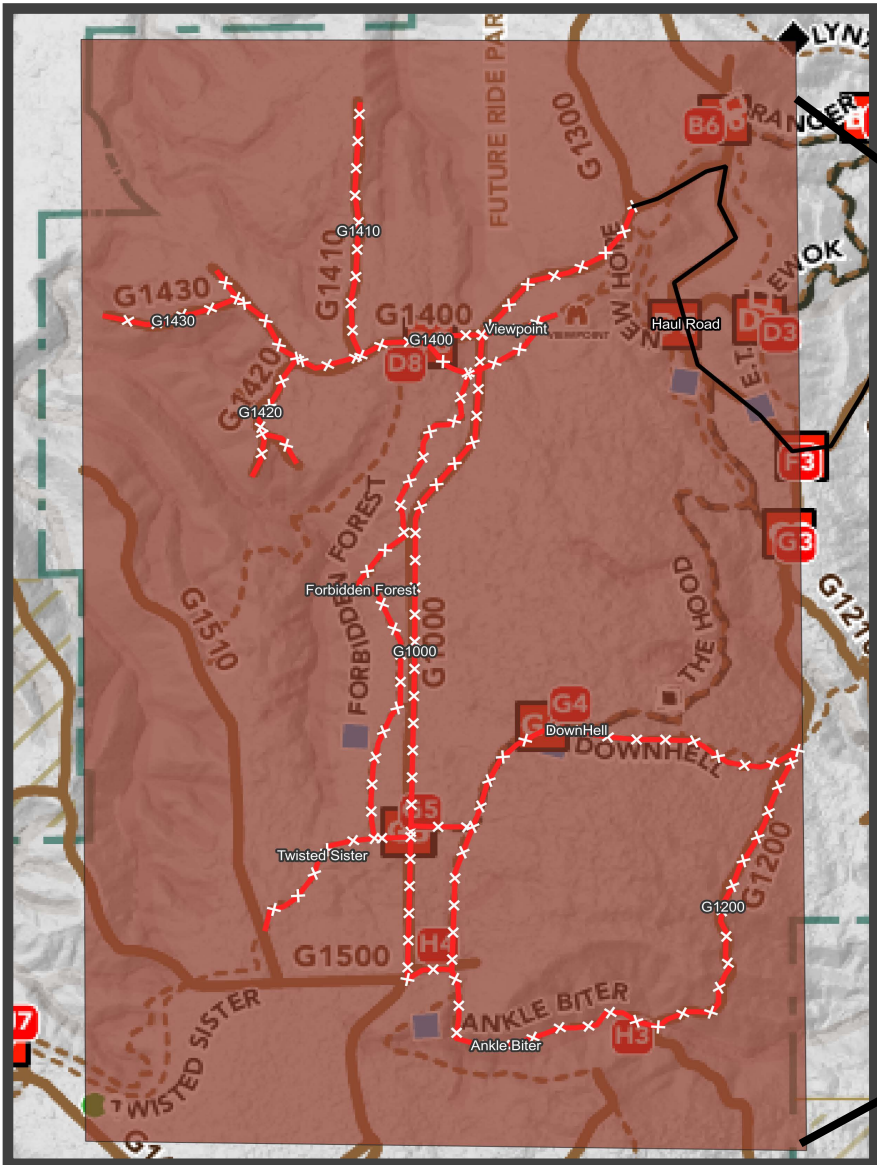




Attention Port Gamble Forest Heritage Park Users:

11 trail sections will be **CLOSED PERIODICALLY** starting Monday, April 3, 2023, due to Restorative Selective Forest Thinning operations underway (see map).

This operation will last approximately 3 months (April to June 2023). Closures are in accordance to active work, and may change day by day. **Please adhere to trail closure signs for your own safety.**

POSSIBLE TRAIL CLOSURES (UNIT 2):					
1)	Forbidden Forest	6)	G1430	10)	G1500/Twisted Sister to Downhell
2)	Downhell	7)	G1410	11)	G1500/G1000 to Viewpoint
3)	Ankle Biter	8)	G1400		
4)	Viewpoint	9)	Downhell/G1200 to Ankle Biter/G1200		
5)	G1420				



 Truck Haul Route
 Trail Closure

- Please exercise caution when entering the park through Bayview Trailhead on weekdays between the hours of 4am and 1pm.
- Large trucks will haul logs north on the G1000 and leaving the park using the Bayview gate/trailhead three to four times daily.
- By removing some trees in a densely packed forest, more sunlight can reach the forest understory to promote growth of diverse plant life and provide more habitat for wildlife.
- For more information, please visit www.kitsapgov.com/parks or e-mail parks@kitsap.gov.



Kitsap County Parks Department
Forest Stewardship Program

