

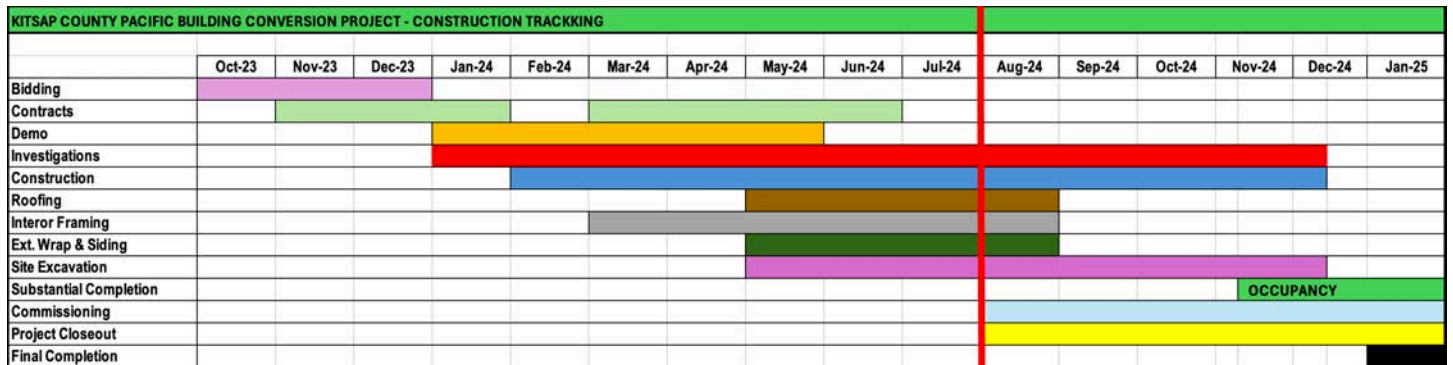
# Pacific Building Conversion

Project Status Report  
July 2024



The Pacific Building Conversion Project is a 20,040 square foot (sf) facility that is being renovated into a new congregate co-shelter facility for 75 unhoused adults, families and 20 companion animals. The building remodel will include additional shower toilet facilities, a warming kitchen, updated HVAC system, new sprinkler system and administration spaces. The exterior changes will include replacement doors and windows, new canopies, new roof, repairs to existing siding, reconfiguring the parking lot and fresh paint.

June	July	August
<ul style="list-style-type: none"> <li>● Fire sprinkler inspection completed</li> <li>● Plumbing rough-in continued</li> <li>● Roof restoration continues</li> <li>● Fire hydrant installation began</li> </ul>	<ul style="list-style-type: none"> <li>● Fire hydrants installed and inspected</li> <li>● North retaining wall constructed</li> <li>● Shower pans were installed</li> <li>● Patch and lap siding installation continued</li> </ul>	<ul style="list-style-type: none"> <li>● Completion of window installation</li> <li>● Delivery of roof top units</li> <li>● Preparations for exterior concrete pours</li> <li>● Installation of drywall and insulation will commence</li> </ul>



## The project is currently tracking for a November 18, 2024 Occupancy date

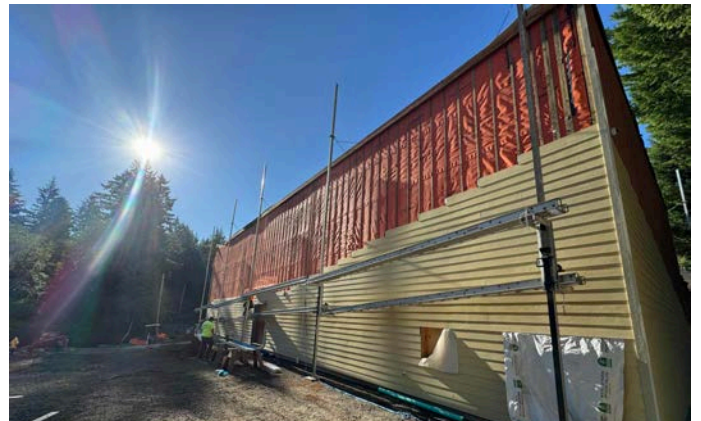
- The Neeley Construction Contract was awarded at \$5,397,000
- July Change Orders Approved for a combined net total of \$29,033.99
- New Contract Total is \$6,014,313.65
- The general contractor billed a total of \$358,567.74 for the work completed in July of 2024
  - The project is 66% complete

## The Month in Review

There is a lot of excavation on the site. Coordination with Puget Sound Energy continued as the electrical vault located on the southeast end of the property was set in place. New conduit was installed underground to provide power to the facility. Two fire hydrants were installed on site and grading will continue. The fire service vault and fire department connection are 85% complete. Exterior window replacement reached 95% completion. Lap siding installation is 60% complete. The retaining wall on the north end was constructed. New yard drains were installed. Vents were installed in the roof and the roofing project is complete. Low-voltage wiring was run for smoke detectors and interior lighting. The rough-in plumbing for sanitary sewer and water distribution was completed. The insulation of plumbing pipelines are 50% complete. Soffit lighting was replaced. Shower pans were set and installed in all shower areas. Framing, plumbing, electrical, and mechanical inspections were scheduled and passed. Framing was approved which allows for the installation of insulation and drywall. The HVAC installation will be finalized with the delivery of rooftop units in August.



*Completed Shower Pan Installation*



*Siding Installation*



*Completed Roof Vent Installation*



*Completed Fire Hydrant Installation*

## Upcoming in August

Installation of PSE electrical vault and underground power lines will continue. The monument sign project at Mile Hill Drive will begin. Connections between the new and existing stormwater systems will be made. Concrete footings will be built and rebar will be installed for the generator and HVAC concrete slabs. Rooftop HVAC units will be delivered and installed. Drywall and insulation will be installed throughout the facility.