

# Housing Solutions Center Quick Facts

YTD as of March 31st, 2018

## YEAR TO DATE HSC ENROLLMENTS

Non-Duplicated Households Served	923
Non-Duplicated Individuals	1,418

Literally Homeless Percentage	41%
Literally Homeless Number of Households	382

At Risk of Losing Housing Percentage	59%
At Risk of Losing Housing # of Households	541

## SERVED BY SITE (DUPLICATED INDIVIDUALS)

Bremerton	929
South Kitsap	241
North Kitsap	181
Coffee Oasis	12
Bainbridge Island	62
Kitsap Connect	8
<b>Total</b>	<b>1,433</b>

## AGES OF INDIVIDUALS

Children 0-18 years of age	366	26%
Youth 18-24 years of age	133	9%
Adults 25-59 years of age	807	57%
Seniors 60 years of age or older	107	8%

## SELF-REPORTED CHARACTERISTICS<sup>1</sup>

Veteran	73	8%
Domestic Violence	258	28%
Physical Disability (Long Term)	195	21%
Developmental Disability	97	11%
Co-occurring Physical/Developmental...	46	5%
Mental Illness	427	46%
Substance Use Disorder	193	21%
Co-occurring Mental Illness &...	110	12%
Male HoH	407	44%
Female HoH	507	55%
Transgender HoH	4	0%

## HOUSEHOLD INCOME

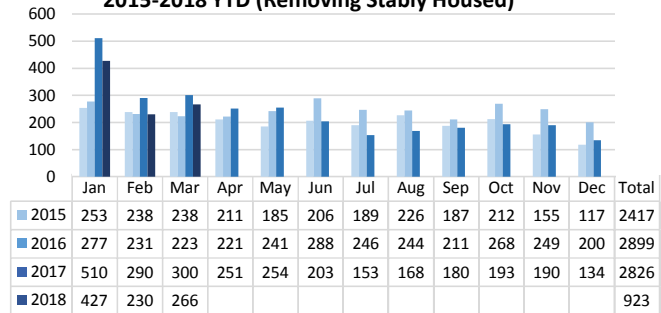
Average Monthly Household Income	\$682
Average Monthly Income per Capita	\$444
Percent of Households Earning \$0/month	33%
Percent of Households Earning < \$735/month	56%

<sup>1</sup> = Self-reported characteristics of the head of household

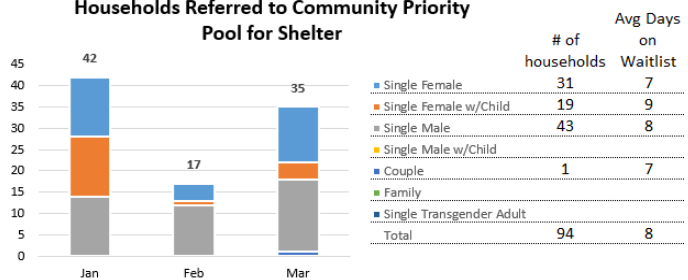
\* HH = Household

\* HoH = Head of Household

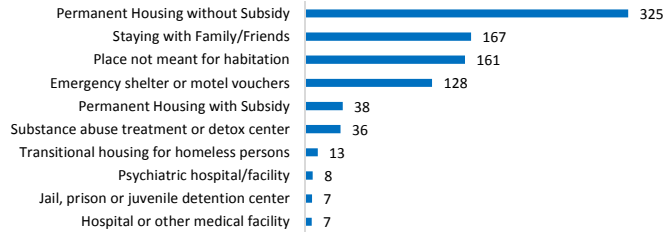
## HSC Monthly Enrollments by Household 2015-2018 YTD (Removing Stably Housed)



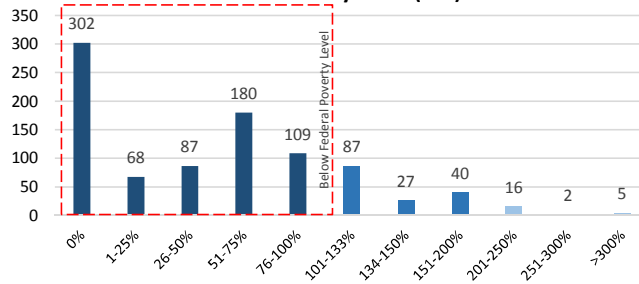
## Households Referred to Community Priority Pool for Shelter



## Prior Living Situation



## HSC Household Income Compared to Federal Poverty Level (FPL)



\*81% (746) of households are at or below 100% FPL

2018 Federal Poverty Level	Family Size	Annual	Monthly	Count	Avg. Monthly Income	Enrolled Households
1	1	\$12,140	\$1,012	645	\$579	
2	2	\$16,460	\$1,372	148	\$830	
3	3	\$20,780	\$1,732	78	\$987	
4	4	\$25,100	\$2,092	33	\$1,080	
5	5	\$29,420	\$2,452	14	\$805	
6	6	\$33,740	\$2,812	2	\$1,700	
7	7	\$38,060	\$3,172	2	\$2,122	
8	8	\$42,380	\$3,532	0	#DIV/0!	

# HSC LITERALLY HOMELESS QUICK FACTS

YTD as of March 31st, 2018

## LITERALLY HOMELESS ENROLLMENTS

Number of HH that are Literally Homeless	382
Percent of all Non-Duplicated HH	41%
Non-Duplicated Individuals	515

## LITERALLY HOMELESS ENROLLMENTS w/EARNED INCOME

Number of HH that are Literally Homeless w/Earned Income	44
Percent of all Non-Duplicated HH	5%
Non-Duplicated Individuals	80

## LITERALLY HOMELESS HOUSEHOLDS w/CHILDREN

Households w/Children under 18 years of age	54
Percent of all Literally Homeless Households	14%
Percent of all Non-Duplicated HH	6%
Total Children	95

## LITERALLY HOMELESS HH w/EARNED INCOME & CHILDREN

Households w/Children under 18 years of age	14
Percent of all Literally Homeless Households	4%
Percent of all Non-Duplicated HH	2%
Total Children	28

## LITERALLY HOMELESS HOUSEHOLD INCOME

Total Average Income	\$554.55
Households with \$0 income	37% / 143 HH

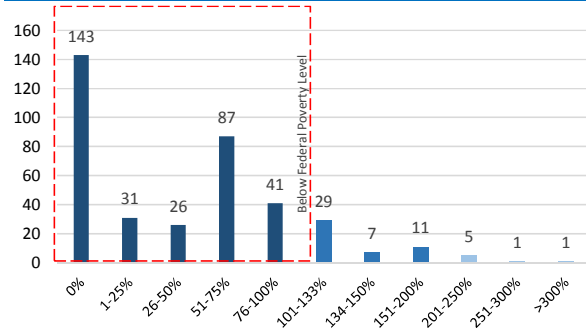
Household Size	Count	Average Income
1	307	\$529.35
2	37	\$571.82
3	23	\$754.92
4	12	\$671.83
5+	3	\$914.67
<b>Total</b>	<b>382</b>	<b>\$554.55</b>

## LITERALLY HOMELESS HOUSEHOLDS w/ EARNED INCOME

Total Average Income	\$1,315.14
----------------------	------------

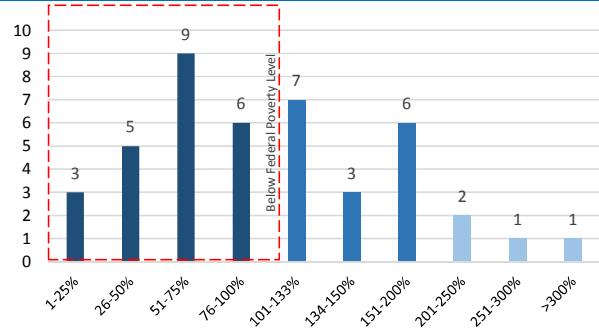
Household Size	Count	Average Income
1	26	\$1,442.23
2	6	\$640.00
3	9	\$1,308.35
4	2	\$1,415.50
5+	1	\$2,244.00
<b>Total</b>	<b>44</b>	<b>\$1,315.14</b>

## LITERALLY HOMELESS HH FEDERAL POVERTY LEVEL



\*86% (328) of households are at or below 100% FPL

## LITERALLY HOMELESS HH w/EI FEDERAL POVERTY LEVEL



\*55% (24) of households are at or below 100% FPL

## LITERALLY HOMELESS HH SELF-REPORTED CHARACTERISTICS<sup>2</sup>

Veteran	31	8%
Domestic Violence	125	33%
Physical Disability (Long Term)	85	22%
Developmental Disability	42	11%
Co-occurring Physical/Developmental Disability	21	5%
Mental Illness	197	52%
Substance Use Disorder	88	23%
Co-occurring Mental Illness & Substance Use	55	14%
Male HoH	201	53%
Female HoH	179	47%
Transgender HoH	0%	

## LITERALLY HOMELESS HH w/EI SELF-REPORTED CHARACTERISTICS<sup>2</sup>

Veteran	1	2%
Domestic Violence	15	34%
Physical Disability (Long Term)	2	5%
Developmental Disability	2	5%
Co-occurring Physical/Developmental Disability	0%	
Mental Illness	15	34%
Substance Use Disorder	4	9%
Co-occurring Mental Illness & Substance Use	2	5%
Male HoH	13	30%
Female HoH	31	70%
Transgender HoH	0%	

<sup>1</sup> = Includes households fleeing domestic violence

<sup>2</sup> = Self-reported characteristics of the head of household

\* HH = Household

\* HoH = Head of Household

# Housing Solutions Center Quick Facts - Services & Referrals

YTD as of March 31st, 2018

## Services Provided YTD

Community Resources - Clothing	9
Community Resources - DSHS	25
Community Resources - DV Advocacy	12
Community Resources - Employment	37
Community Resources - Energy Assistance	6
Community Resources - Financial	2
Community Resources - Food/Meals	16
Community Resources - Legal Services	14
Community Resources - Medical	7
Community Resources - Mental Health	20
Community Resources - Outdoor Supplies	4
Community Resources - Personal Hygiene	22
Community Resources - Safelink	10
Community Resources - Senior Services	1
Community Resources - Transportation	4
Community Resources - VHOG Meeting	19
<b>Community Resources Total</b>	<b>208</b>

Direct Services - Bus Tokens/Transportation	58
Direct Services - Homeless Childcare	1
Direct Services - Housing Counseling	674
Direct Services - Landlord List	254
Direct Services - Waitlist Referral	136
<b>Direct Services Total</b>	<b>1123</b>

Funding - HARPS	152
Funding - HEN Program	1
Funding - HSC Deposit Assistance	0
Funding - HSC Rental Assistance	3
Funding - KCR Eviction Prevention	6
Funding - KCR LIHEAP Eviction Prevention	22
Funding - KCR Rapid Rehousing	4
Funding - Kinship	2
Funding - NKFL Rent/Deposit Assistance	17
Funding - Veterans Assistance	19
<b>Funding Total</b>	<b>226</b>

Housing Program - Home Build/Ownership Program	2
Housing Program - Home Share	2
Housing Program - KCR Ending Family Homelessness	11
Housing Program - KCR General Housing Referral	5
Housing Program - Subsidized Housing Provider	2
<b>Housing Program Total</b>	<b>22</b>

Recovery Housing Referral - Agape	0
Recovery Housing Referral - Kitsap Recovery Center	0
Recovery Housing Referral - Oxford House	3
Recovery Housing Referral - West Sound Treatment Center	2
<b>Recovery Housing Referral Total</b>	<b>5</b>

Safe Park - KCR Safe Park	5
Safe Park - NKFL Safe Park	1
<b>Safe Park Total</b>	<b>6</b>

## Services Provided YTD - Shelter Referrals

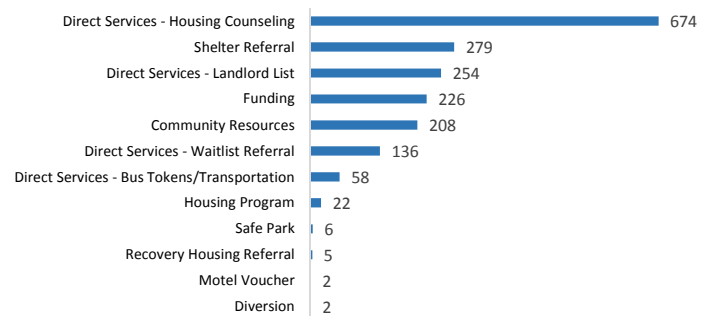
Shelter Referral - Benedict House	39
Shelter Referral - Coffee Oasis	0
Shelter Referral - Georgia's House	50
Shelter Referral - KCR Emergency Housing	2
Shelter Referral - Kitsap Rescue Mission	114
Shelter Referral - Salvation Army	56
Shelter Referral - St. Vincent de Paul	14
Shelter Referral - YWCA ALIVE	2
Shelter Referral - Other Shelter	2
<b>Shelter Referral Total</b>	<b>279</b>

Motel Voucher - HSC	2
Motel Voucher - NKFL	0
Motel Voucher - Salvation Army	0
<b>Motel Vouchers Total</b>	<b>2</b>

## Diversion - YTD

Diversion - Diverted to Stay with Family	1
Diversion - Diverted to Stay with Friends	1
Diversion - Other	0
Diversion - Out of County Referral	0
Diversion - Transportation Assistance to Stable Housing	0
<b>Diversion Total</b>	<b>2</b>

**Services Provided - YTD**



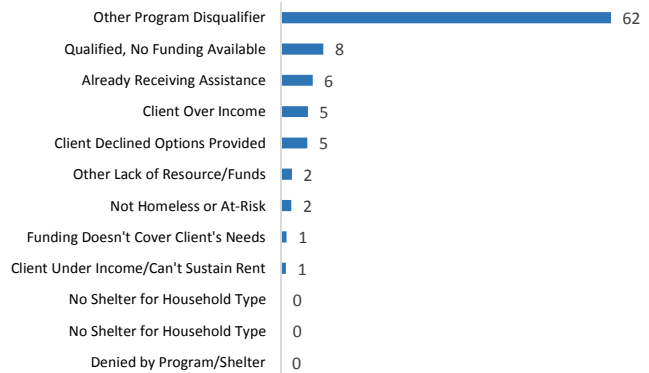
# Housing Solutions Center Quick Facts - Unable to Serve, HARPS & Length of Stay

YTD as of March 31st, 2018

## Unable to Serve - YTD

Already Receiving Assistance	6
Client Declined Options Provided	5
Client Over Income	5
Client Under Income/Can't Sustain Rent	1
Denied by Program/Shelter	0
Funding Doesn't Cover Client's Needs	1
No Shelter for Household Type	0
Non-Compliance with Program	0
Not Homeless or At-Risk	2
Qualified, No Funding Available	8
Other Lack of Resource/Funds	2
Other Program Disqualifier	62
<b>Unable to Serve Total</b>	<b>93</b>

## Unable to Serve - YTD



## HARPS ASSISTANCE - SINCE INCEPTION

<b>Unique Clients Since Inception</b>	<b>668</b>		
<b>Total HARPS Services Provided Since Inception</b>	<b>838</b>		
<b>Times Assistance Provided to Clients</b>	<b>1</b>	<b>2</b>	<b>3</b>
Count	542	110	12
Percentage	81%	16%	2%
	Count * Percentage		
Number returning within 3 months (1-90 days)	87	13%	
Number returning in 3-6 months (91-180 days)	18	3%	
Number returning in 6-12 months (181-365 days)	30	4%	
Number returning in 1-2 years (366-730 days)	12	2%	
<b>Total Returns</b>	<b>147</b>	<b>22%</b>	
<b>Median Days to Return</b>	<b>59</b>		

\* includes multiple returns for assistance

## HARPS ASSISTANCE - YTD

<b>Unique Clients YTD</b>	<b>140</b>		
<b>Total HARPS Services Provided YTD</b>	<b>152</b>		
<b>Times Assistance Provided to Clients</b>	<b>1</b>	<b>2</b>	<b>3</b>
Count	129	10	1
Percentage	92%	7%	1%
	Count * Percentage		
Number returning within 3 months (1-90 days)	11	8%	
Number returning in 3-6 months (91-180 days)	0	0%	
Number returning in 6-12 months (181-365 days)	0	0%	
<b>Total Returns</b>	<b>11</b>	<b>8%</b>	
<b>Median Days to Return</b>	<b>31.5</b>		

## Length of Stay in Prior Living Situation - YTD

One night or Less	64
Two to six nights	81
One week or more, but less than one month	121
One month or more, but less than 90 days	147
90 days or more, but less than one year	194
One year or longer	269
Data not collected	11
Client refused	28
Client doesn't know	8

## Length of Stay in Prior Living Situation

