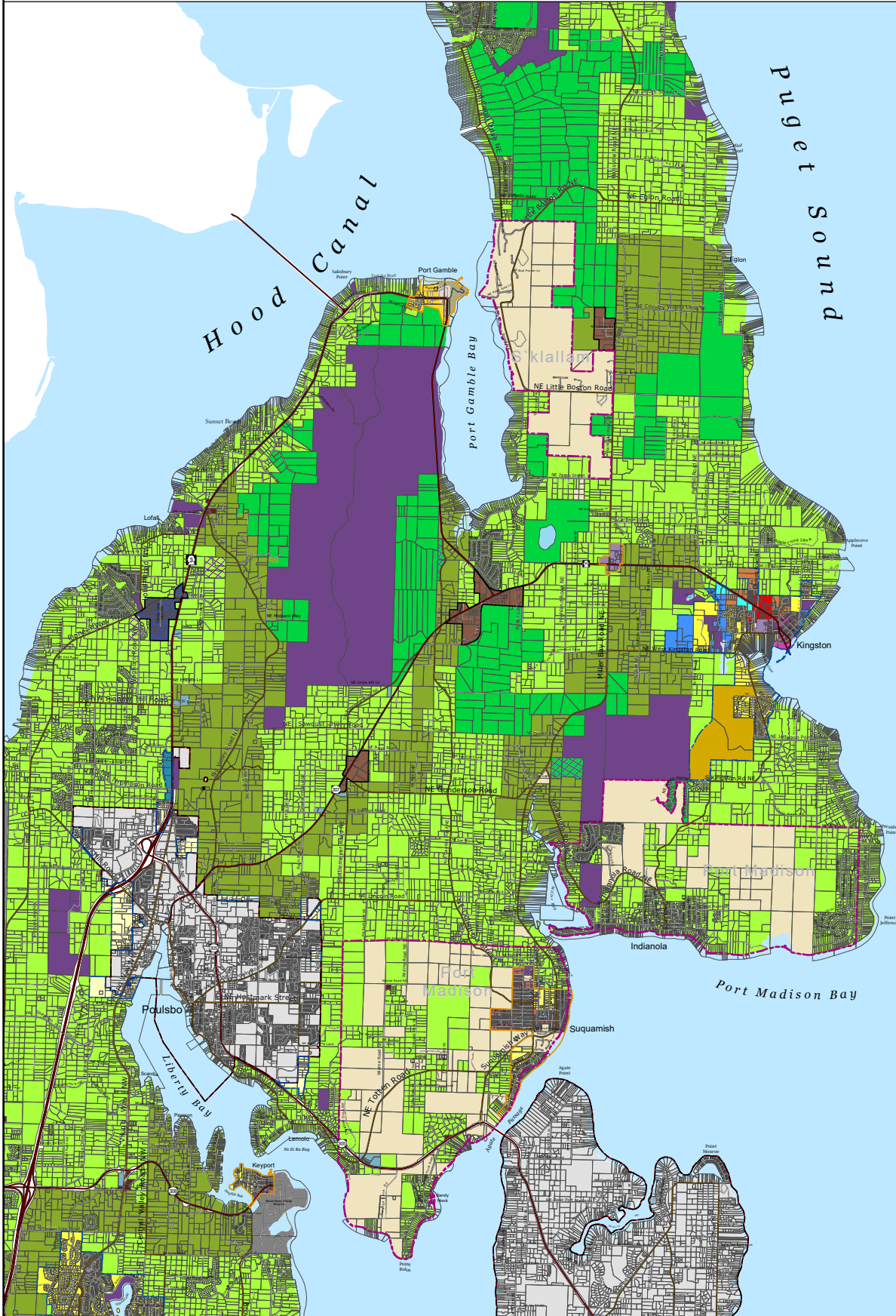


North Area - Kitsap County

DRAFT



Legend

- RR - Rural Residential (1 DU/5 Ac)
- Mineral Resource/Rural Residential
- RP - Rural Protection (1 DU/10 Ac)
- RW - Rural Wooded (1 DU/20 Ac)
- Mineral Resource/Rural Wooded
- IND - Industrial
- Commercial (10-30 DU/Ac)
- NC - Neighborhood Commercial (10-30 DU/Ac)
- RCO - Rural Commercial
- REC - Rural Employment Center
- RI - Rural Industrial
- TTEC - Twelve Trees Employment Center
- UCR - Urban Cluster Residential (5-9 DU/Ac)
- UR - Urban Restricted (1-5 DU/Ac)
- UL - Urban Low Residential (5-9 DU/Ac)
- UM - Urban Medium Residential (10-18 DU/Ac)
- UH - Urban High Residential (19-30 DU/Ac)
- Urban Village Center (min 10 DU/Ac)
- KVC - Keyport Village Commercial
- KVLR - Keyport Village Low Residential
- KVR - Keyport Village Residential
- RHTC - Rural Historic Town Commercial
- RHTR - Rural Historic Town Residential
- RHTW - Rural Historic Town Waterfront
- SVC - Suquamish Village Commercial
- SVLR - Suquamish Village Low Residential
- SVR - Suquamish Village Residential
- Park
- CITY - Incorporated City
- MIL - Military
- T - Tribal Land
- Lake
- Salt Water
- LI - Light Industrial
- RL - Residential Low
- Urban Growth Area Boundary
- Incorporated City Boundary
- LAMIRD - Type I
- LAMIRD - Type III
- Reservation Boundaries
- Tax Parcel
- State Highway
- Collector / Arterial
- Local Access; Local Road

Zoning - Alternative 1

FINAL DRAFT



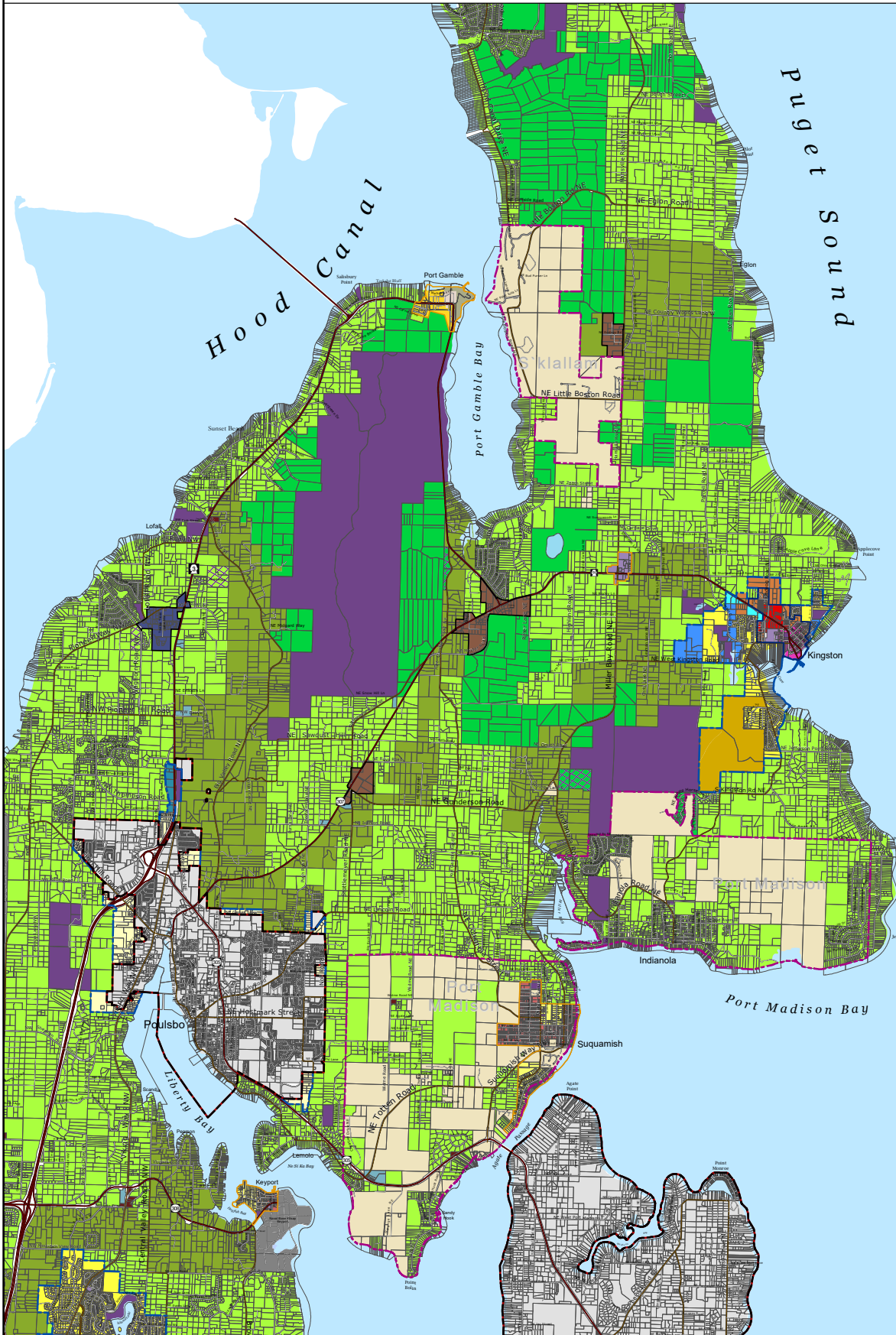
Kitsap County Department of Community Development
 614 Division Street, MS-36, Port Orchard, Washington 98366
 VOICE (360) 337-5777 (Kitsap One) * <https://www.kitsapgov.com/>

This map was created from existing map sources, not from field surveys. Determination of fitness for use lies with the user, as does the responsibility for understanding the accuracy and limitations of this map and data.
 The information on this map may have been collected from various sources and can change over time without notice.
 While great care was taken in making this map, there is no guarantee or warranty of its accuracy as to labeling, placement or location of any geographic features present. This map is intended for informational purposes only and is not a substitute for a field survey.
 Kitsap County and its officials and employees assume no responsibility or legal liability for the accuracy, completeness, reliability, or timeliness of any information on this map.
 Ord No 612-2022 Comprehensive Plan Amendment
 Map Published Date: April 26, 2023



North Area - Kitsap County

DRAFT



Legend

- RR - Rural Residential (1 DU/5 Ac)
- Mineral Resource/Rural Residential
- RP - Rural Protection (1 DU/10 Ac)
- RW - Rural Wooded (1 DU/20 Ac)
- Mineral Resource/Rural Wooded
- IND - Industrial
- Commercial (10-30 DU/Ac)
- NC - Neighborhood Commercial (10-30 DU/Ac)
- RCO - Rural Commercial
- REC - Rural Employment Center
- RI - Rural Industrial
- TTEC - Twelve Trees Employment Center
- UCR - Urban Cluster Residential (5-9 DU/Ac)
- UR - Urban Restricted (1-5 DU/Ac)
- UL - Urban Low Residential (5-9 DU/Ac)
- UM - Urban Medium Residential (10-18 DU/Ac)
- UH - Urban High Residential (19-30 DU/Ac)
- Urban Village Center (min 10 DU/Ac)
- KVC - Keyport Village Commercial
- KVLR - Keyport Village Low Residential
- KVR - Keyport Village Residential
- RHTC - Rural Historic Town Commercial
- RHTR - Rural Historic Town Residential
- RHTW - Rural Historic Town Waterfront
- SVC - Suquamish Village Commercial
- SVLR - Suquamish Village Low Residential
- SVR - Suquamish Village Residential
- Park
- CITY - Incorporated City
- MIL - Military
- T - Tribal Land
- Lake
- Salt Water
- LI - Light Industrial
- RL - Residential Low
- Proposed Urban Growth Area Boundary
- Incorporated City Boundary
- Proposed Regional Growth Center
- LAMIRD - Type I
- LAMIRD - Type III
- Reservation Boundaries
- Tax Parcel
- State Highway
- Collector / Arterial
- Local Access; Local Road

Zoning - Alternative 2

FINAL DRAFT



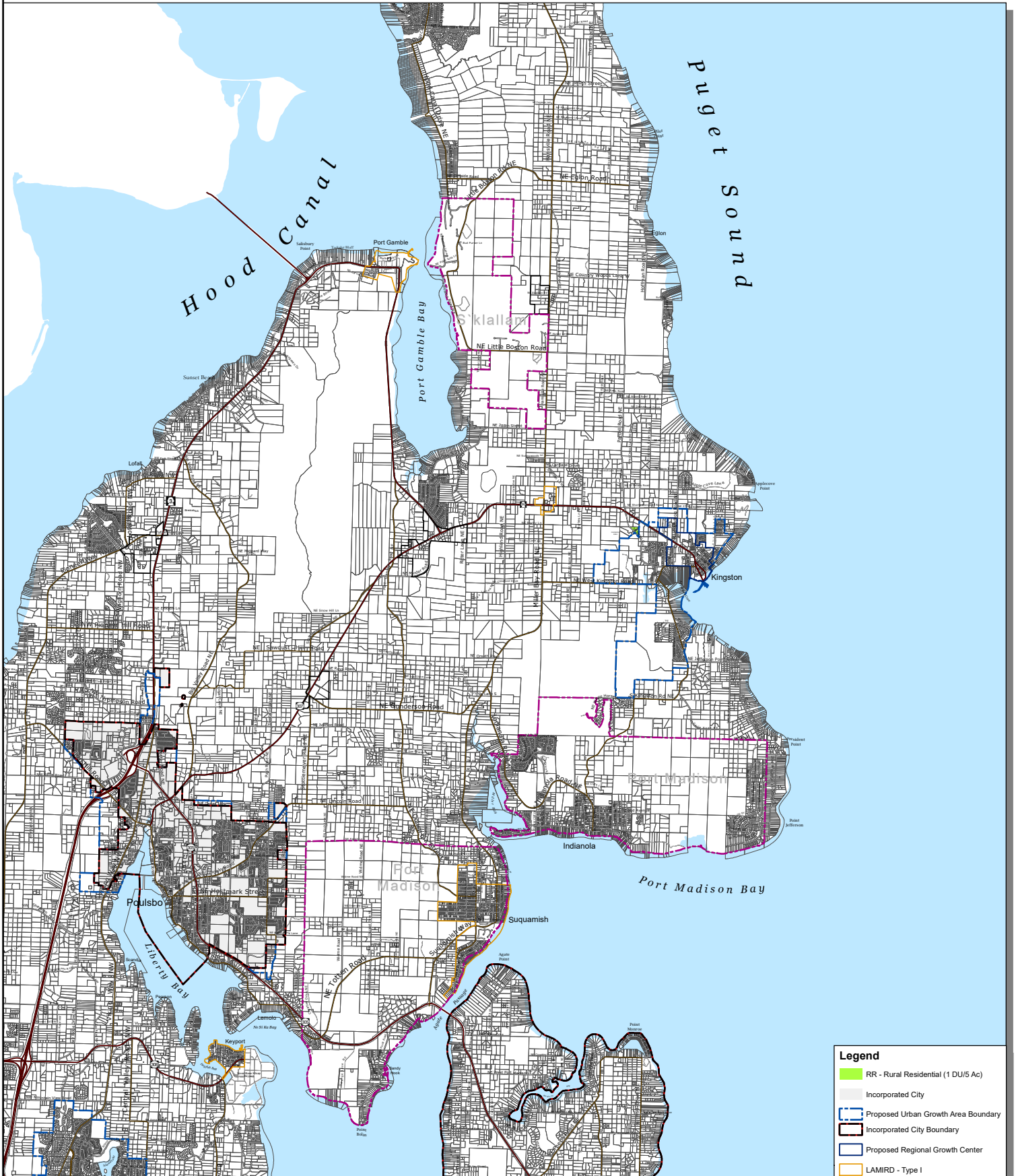
Kitsap County Department of Community Development
 614 Division Street, MS-36, Port Orchard, Washington 98366
 VOICE (360) 337-5777 (Kitsap One) * <https://www.kitsapgov.com/>

This map was created from existing map sources, not from field surveys. Determination of fitness for use lies with the user, as does the responsibility for understanding the accuracy and limitations of this map and data.
 The information on this map may have been collected from various sources and can change over time without notice.
 While great care was taken in making this map, there is no guarantee or warranty of its accuracy as to labeling, placement or location of any geographic features present. This map is intended for informational purposes only and is not a substitute for a field survey.
 Kitsap County and its officials and employees assume no responsibility or legal liability for the accuracy, completeness, reliability, or fitness of any information on this map.
 Ord No 612-2022 Comprehensive Plan Amendment
 Map Published Date: April 26, 2023



North Area - Kitsap County

DRAFT



Legend

- RR - Rural Residential (1 DU/5 Ac)
- Incorporated City
- Proposed Urban Growth Area Boundary
- Incorporated City Boundary
- Proposed Regional Growth Center
- LAMIRD - Type I
- LAMIRD - Type III
- Reservation Boundaries
- Tax Parcel
- State Highway
- Collector / Arterial
- Local Access; Local Road

Rural Zoning Changes - Alternative 2

FINAL DRAFT



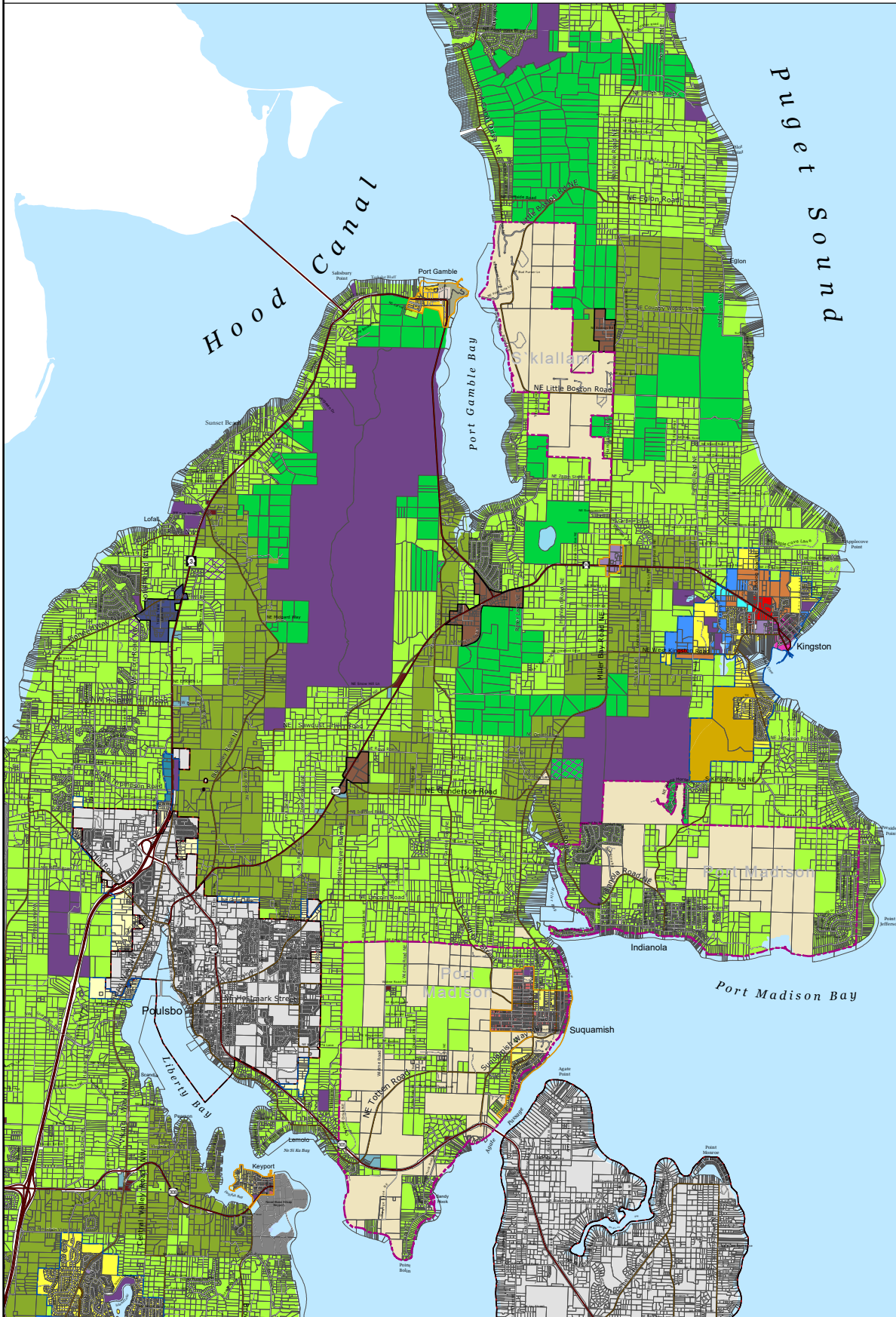
Kitsap County Department of Community Development
 614 Division Street, MS-36, Port Orchard, Washington 98366
 VOICE (360) 337-5777 (Kitsap One) * <https://www.kitsapgov.com/>

This map was created from existing map sources, not from field surveys. Determination of fitness for use lies with the user, as does the responsibility for understanding the accuracy and limitations of this map and data.
 The information on this map may have been collected from various sources and can change over time without notice.
 While great care was taken in making this map, there is no guarantee or warranty of its accuracy as to labeling, placement or location of any geographic features present. This map is intended for informational purposes only and is not a substitute for a field survey.
 Kitsap County and its officials and employees assume no responsibility or legal liability for the accuracy, completeness, reliability, or timeliness of any information on this map.
 Ord No 612-2022 Comprehensive Plan Amendment
 Map Published Date: April 26, 2023



North Area - Kitsap County

DRAFT



Legend

- RR - Rural Residential (1 DU/5 Ac)
- Mineral Resource/Rural Residential
- RP - Rural Protection (1 DU/10 Ac)
- RW - Rural Wooded (1 DU/20 Ac)
- Mineral Resource/Rural Wooded
- IND - Industrial
- Commercial (10-30 DU/Ac)
- NC - Neighborhood Commercial (10-30 DU/Ac)
- RCO - Rural Commercial
- REC - Rural Employment Center
- RI - Rural Industrial
- TTEC - Twelve Trees Employment Center
- UCR - Urban Cluster Residential (5-9 DU/Ac)
- UR - Urban Restricted (1-5 DU/Ac)
- UL - Urban Low Residential (5-9 DU/Ac)
- UM - Urban Medium Residential (10-18 DU/Ac)
- UH - Urban High Residential (19-30 DU/Ac)
- Urban Village Center (min 10 DU/Ac)
- KVC - Keyport Village Commercial
- KVLR - Keyport Village Low Residential
- KVR - Keyport Village Residential
- RHTC - Rural Historic Town Commercial
- RHTR - Rural Historic Town Residential
- RHTW - Rural Historic Town Waterfront
- SVC - Suquamish Village Commercial
- SVLR - Suquamish Village Low Residential
- SVR - Suquamish Village Residential
- Park
- CITY - Incorporated City
- MIL - Military
- T - Tribal Land
- Lake
- Salt Water
- LI - Light Industrial
- RL - Residential Low
- Proposed Urban Growth Area Boundary
- Incorporated City Boundary
- LAMIRD - Type I
- LAMIRD - Type III
- Reservation Boundaries
- Tax Parcel
- State Highway
- Collector / Arterial
- Local Access; Local Road

Zoning - Alternative 3

FINAL DRAFT



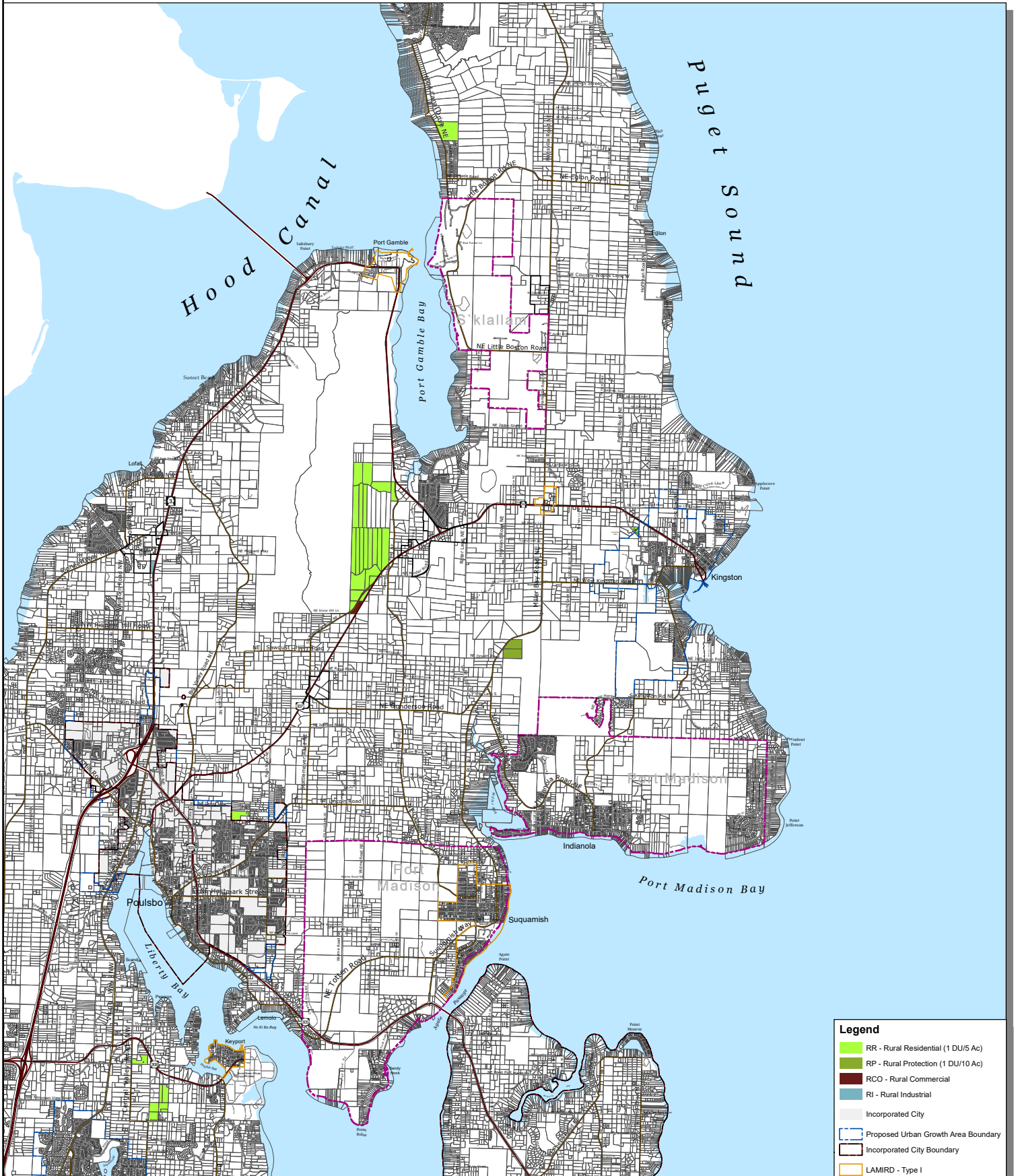
Kitsap County Department of Community Development
 614 Division Street, MS-36, Port Orchard, Washington 98366
 VOICE (360) 337-5777 (Kitsap One) * <https://www.kitsapgov.com/>

This map was created from existing map sources, not from field surveys. Determination of fitness for use lies with the user, as does the responsibility for understanding the accuracy and limitations of this map and data.
 The information on this map may have been collected from various sources and can change over time without notice.
 While great care was taken in making this map, there is no guarantee or warranty of its accuracy as to labeling, placement or location of any geographic features present. This map is intended for informational purposes only and is not a substitute for a field survey.
 Kitsap County and its officials and employees assume no responsibility or legal liability for the accuracy, completeness, reliability, or fitness of any information on this map.
 Ord No 612-2022 Comprehensive Plan Amendment
 Map Published Date: April 26, 2023



North Area - Kitsap County

DRAFT



Legend

- RR - Rural Residential (1 DU/5 Ac)
- RP - Rural Protection (1 DU/10 Ac)
- RCO - Rural Commercial
- RI - Rural Industrial
- Incorporated City
- Proposed Urban Growth Area Boundary
- Incorporated City Boundary
- LAMIRD - Type I
- LAMIRD - Type III
- Reservation Boundaries
- Tax Parcel
- State Highway
- Collector / Arterial
- Local Access; Local Road

Rural Zoning Changes - Alternative 3

FINAL DRAFT



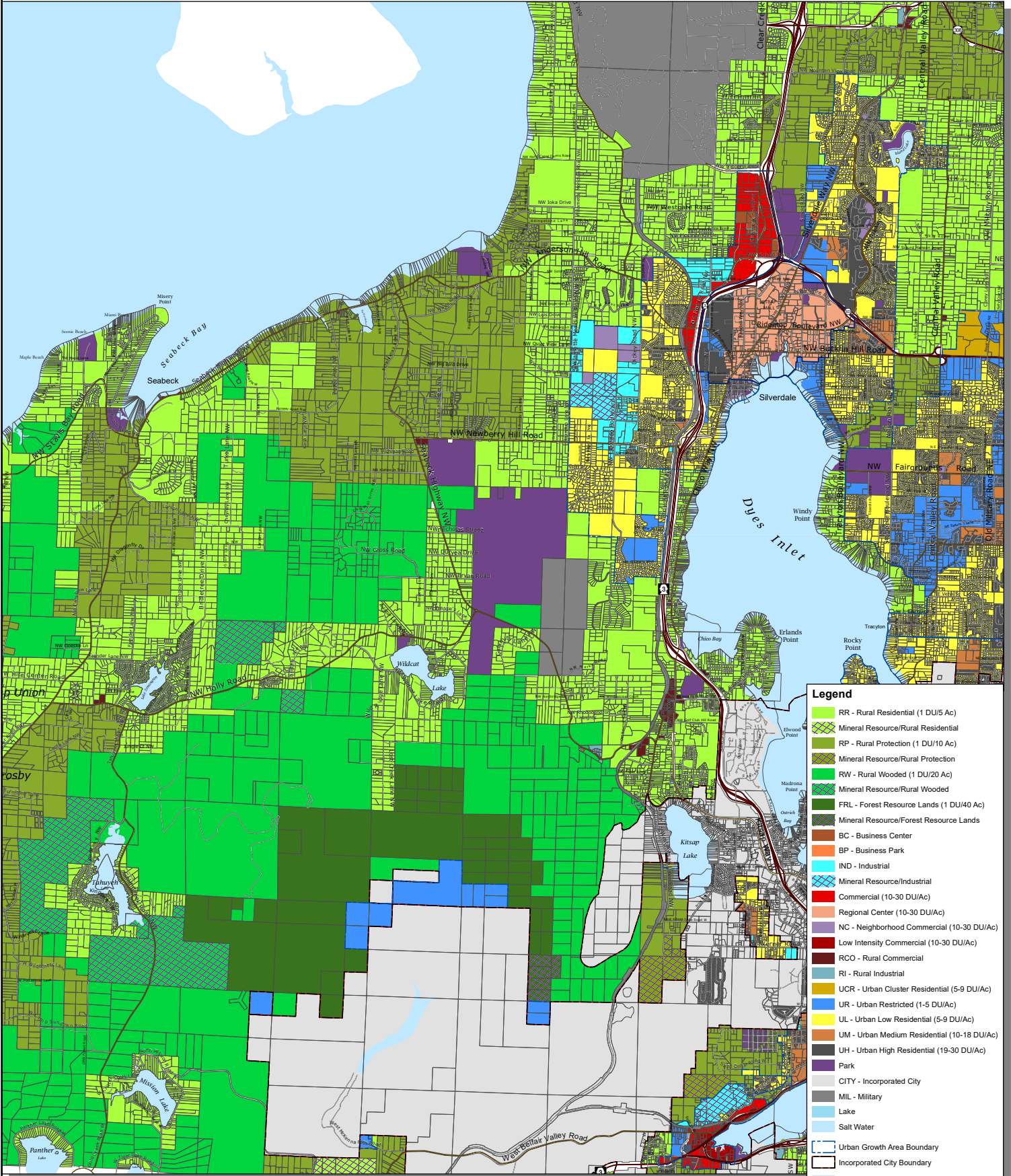
Kitsap County Department of Community Development
 614 Division Street, MS-36, Port Orchard, Washington 98366
 VOICE (360) 337-5777 (Kitsap One) * <https://www.kitsapgov.com/>

This map was created from existing map sources, not from field surveys. Determination of fitness for use lies with the user, as does the responsibility for understanding the accuracy and limitations of this map and data.
 The information on this map may have been collected from various sources and can change over time without notice.
 While great care was taken in making this map, there is no guarantee or warranty of its accuracy as to labeling, placement or location of any geographic features present. This map is intended for informational purposes only and is not a substitute for a field survey.
 Kitsap County and its officials and employees assume no responsibility or legal liability for the accuracy, completeness, reliability, or timeliness of any information on this map.
 Ord No 612-2022 Comprehensive Plan Amendment
 Map Published Date: April 26, 2023



Central Area - Kitsap County

DRAFT



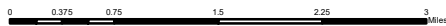
- Legend**
- RR - Rural Residential (1 DU/5 Ac)
 - Mineral Resource/Rural Residential
 - RP - Rural Protection (1 DU/10 Ac)
 - Mineral Resource/Rural Protection
 - RW - Rural Wooded (1 DU/20 Ac)
 - Mineral Resource/Rural Wooded
 - FRL - Forest Resource Lands (1 DU/40 Ac)
 - Mineral Resource/Forest Resource Lands
 - BC - Business Center
 - BP - Business Park
 - IND - Industrial
 - Mineral Resource/Industrial
 - Commercial (10-30 DU/Ac)
 - Regional Center (10-30 DU/Ac)
 - NC - Neighborhood Commercial (10-30 DU/Ac)
 - Low Intensity Commercial (10-30 DU/Ac)
 - RCO - Rural Commercial
 - RI - Rural Industrial
 - UCR - Urban Cluster Residential (5-9 DU/Ac)
 - UR - Urban Restricted (1-5 DU/Ac)
 - UL - Urban Low Residential (5-9 DU/Ac)
 - UM - Urban Medium Residential (10-18 DU/Ac)
 - UH - Urban High Residential (19-30 DU/Ac)
 - Park
 - CITY - Incorporated City
 - MIL - Military
 - Lake
 - Salt Water
 - Urban Growth Area Boundary
 - Incorporated City Boundary
 - Regional Growth Center
 - Tax Parcel
 - State Highway
 - Collector / Arterial
 - Local Access; Local Road
 - Railroad Lines

This map was created from existing map sources, not from field surveys. Determination of fitness for use lies with the user, as does the responsibility for understanding the accuracy and limitations of this map and data.

The information on this map may have been collected from various sources and can change over time without notice. While great care was taken in making this map, there is no guarantee or warranty of its accuracy as to labeling, placement or location of any geographic features present. This map is intended for informational purposes only and is not a substitute for a field survey.

Kitsap County and its officials and employees assume no responsibility or legal liability for the accuracy, completeness, reliability, or timeliness of any information on this map.

Ord No 612-2022 Comprehensive Plan Amendment
Map Published Date: April 26, 2023



Zoning - Alternative 1

FINAL DRAFT

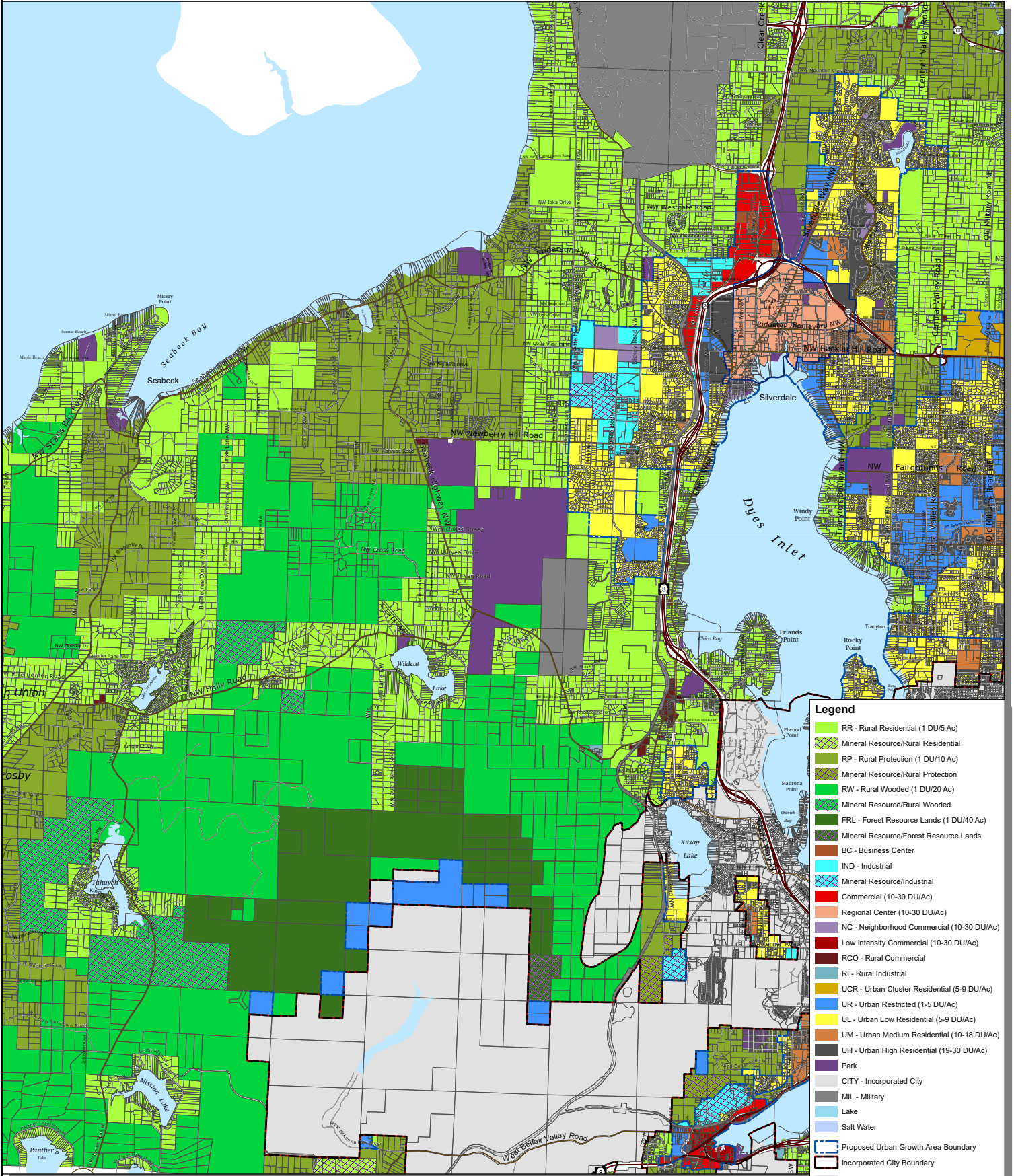


Kitsap County Department of Community Development
614 Division Street, MS-36, Port Orchard, Washington 98366
VOICE (360) 337-5777 (Kitsap One) * <https://www.kitsapgov.com/>



Central Area - Kitsap County

DRAFT



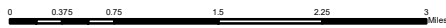
- Legend**
- RR - Rural Residential (1 DU/5 Ac)
 - Mineral Resource/Rural Residential
 - RP - Rural Protection (1 DU/10 Ac)
 - Mineral Resource/Rural Protection
 - RW - Rural Wooded (1 DU/20 Ac)
 - Mineral Resource/Rural Wooded
 - FRL - Forest Resource Lands (1 DU/40 Ac)
 - Mineral Resource/Forest Resource Lands
 - BC - Business Center
 - IND - Industrial
 - Mineral Resource/Industrial
 - Commercial (10-30 DU/Ac)
 - Regional Center (10-30 DU/Ac)
 - NC - Neighborhood Commercial (10-30 DU/Ac)
 - Low Intensity Commercial (10-30 DU/Ac)
 - RCC - Rural Commercial
 - RI - Rural Industrial
 - UCR - Urban Cluster Residential (5-9 DU/Ac)
 - UR - Urban Restricted (1-5 DU/Ac)
 - UL - Urban Low Residential (5-9 DU/Ac)
 - UM - Urban Medium Residential (10-18 DU/Ac)
 - UH - Urban High Residential (19-30 DU/Ac)
 - Park
 - CITY - Incorporated City
 - MIL - Military
 - Lake
 - Salt Water
 - Proposed Urban Growth Area Boundary
 - Incorporated City Boundary
 - Proposed Regional Growth Center
 - Tax Parcel
 - State Highway
 - Collector / Arterial
 - Local Access; Local Road
 - Railroad Lines

This map was created from existing map sources, not from field surveys. Determination of fitness for use lies with the user, as does the responsibility for understanding the accuracy and limitations of this map and data.

The information on this map may have been collected from various sources and can change over time without notice. While great care was taken in making this map, there is no guarantee or warranty of its accuracy as to labeling, placement or location of any geographic features present. This map is intended for informational purposes only and is not a substitute for a field survey.

Kitsap County and its officials and employees assume no responsibility or legal liability for the accuracy, completeness, reliability, or timeliness of any information on this map.

Ord No 81-2-2022 Comprehensive Plan Amendment
Map Published Date: April 28, 2023



Zoning - Alternative 2

FINAL DRAFT

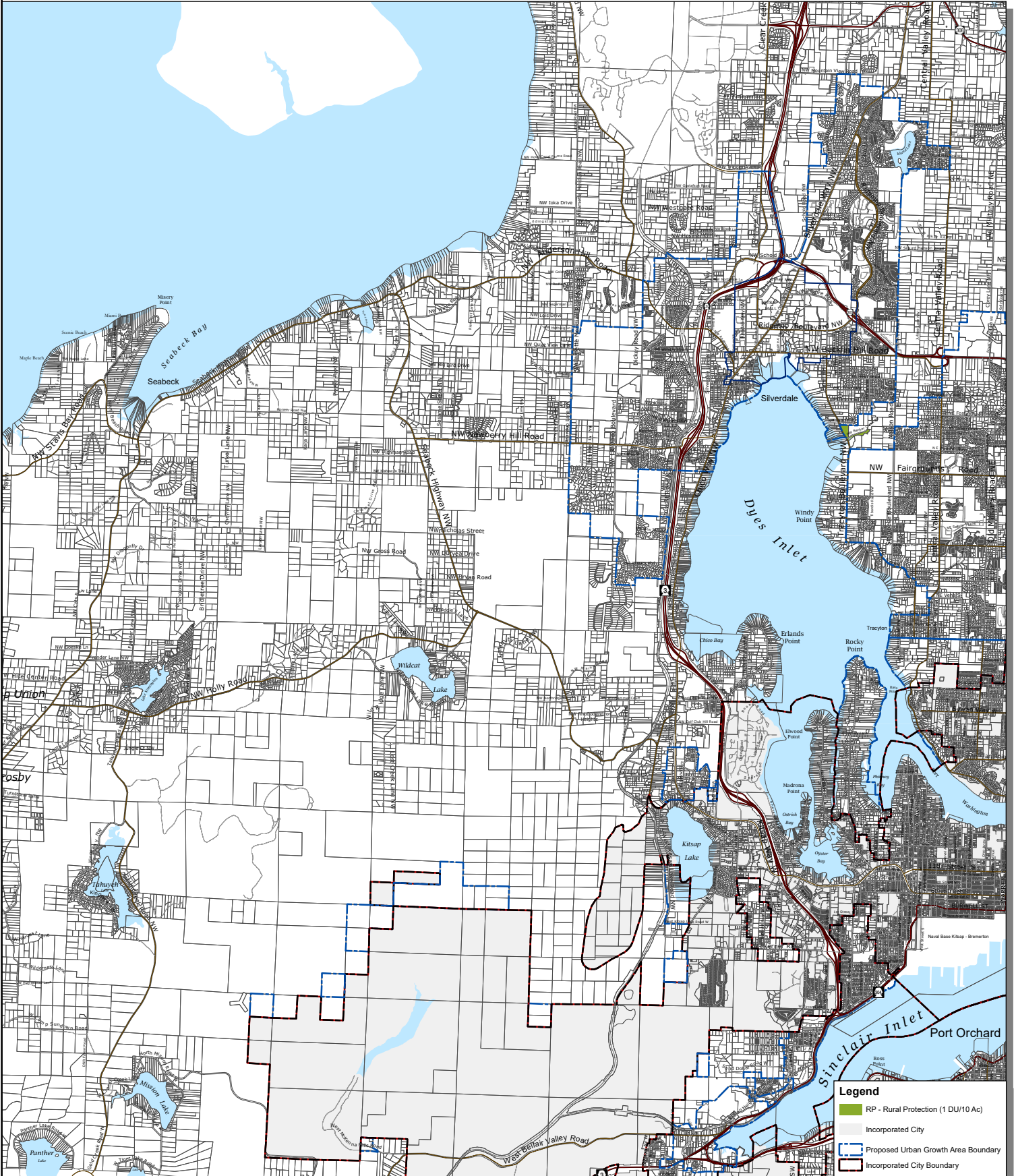


Kitsap County Department of Community Development
614 Division Street, MS-36, Port Orchard, Washington 98366
VOICE (360) 337-5777 (Kitsap One) * <https://www.kitsapgov.com/>



Central Area - Kitsap County

DRAFT



Legend

- RP - Rural Protection (1 DU/10 Ac)
- Incorporated City
- Proposed Urban Growth Area Boundary
- Incorporated City Boundary
- Proposed Regional Growth Center
- Tax Parcel
- State Highway
- Collector / Arterial
- Local Access; Local Road
- Railroad Lines

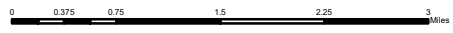
Rural Zoning Changes - Alternative 2

FINAL DRAFT



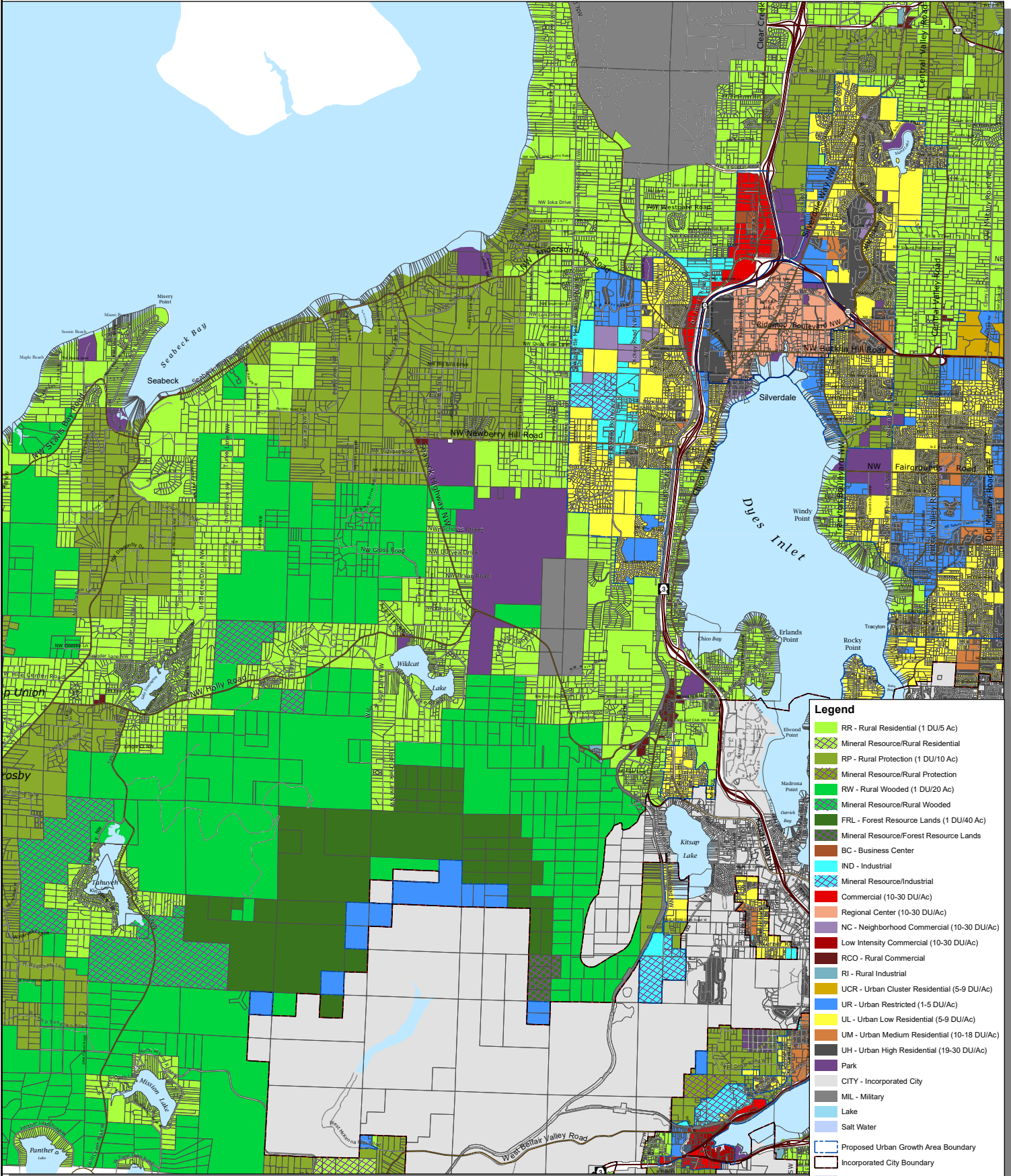
Kitsap County Department of Community Development
614 Division Street, MS-36, Port Orchard, Washington 98366
VOICE (360) 337-5777 (Kitsap One) * <https://www.kitsapgov.com/>

This map was created from existing map sources, not from field surveys. Determination of fitness for use lies with the user, as does the responsibility for understanding the accuracy and limitations of this map and data.
The information on this map may have been collected from various sources and can change over time without notice.
While great care was taken in making this map, there is no guarantee or warranty of its accuracy as to labeling, placement or location of any geographic features present. This map is intended for informational purposes only and is not a substitute for a field survey.
Kitsap County and its officials and employees assume no responsibility or legal liability for the accuracy, completeness, reliability, or timeliness of any information on this map.
Ord No 612-2022 Comprehensive Plan Amendment
Map Published Date: April 26, 2023



Central Area - Kitsap County

DRAFT



Legend

- RR - Rural Residential (1 DU/5 Ac)
- Mineral Resource/Rural Residential
- RP - Rural Protection (1 DU/10 Ac)
- Mineral Resource/Rural Protection
- RW - Rural Wooded (1 DU/20 Ac)
- Mineral Resource/Rural Wooded
- FRL - Forest Resource Lands (1 DU/40 Ac)
- Mineral Resource/Forest Resource Lands
- BC - Business Center
- IND - Industrial
- Mineral Resource/Industrial
- Commercial (10-30 DU/Ac)
- Regional Center (10-30 DU/Ac)
- NC - Neighborhood Commercial (10-30 DU/Ac)
- Low Intensity Commercial (10-30 DU/Ac)
- RCC - Rural Commercial
- RI - Rural Industrial
- UCR - Urban Cluster Residential (5-9 DU/Ac)
- UR - Urban Restricted (1-5 DU/Ac)
- UL - Urban Low Residential (5-9 DU/Ac)
- UM - Urban Medium Residential (10-18 DU/Ac)
- UH - Urban High Residential (19-30 DU/Ac)
- Park
- CITY - Incorporated City
- MIL - Military
- Lake
- Salt Water
- Proposed Urban Growth Area Boundary
- Incorporated City Boundary
- Proposed Regional Growth Center
- Tax Parcel
- State Highway
- Collector / Arterial
- Local Access; Local Road
- Railroad Lines

This map was created from existing map sources, not from field surveys. Determination of fitness for use lies with the user, as does the responsibility for understanding the accuracy and limitations of this map and data.

The information on this map may have been collected from various sources and can change over time without notice. While great care was taken in making this map, there is no guarantee or warranty of its accuracy as to labeling, placement or location of any geographic features present. This map is intended for informational purposes only and is not a substitute for a field survey.

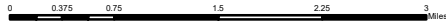
Kitsap County and its officials and employees assume no responsibility or legal liability for the accuracy, completeness, reliability, or timeliness of any information on this map.
Ord No 612-2022 Comprehensive Plan Amendment
Map Published Date: April 26, 2023

Zoning - Alternative 3

FINAL DRAFT

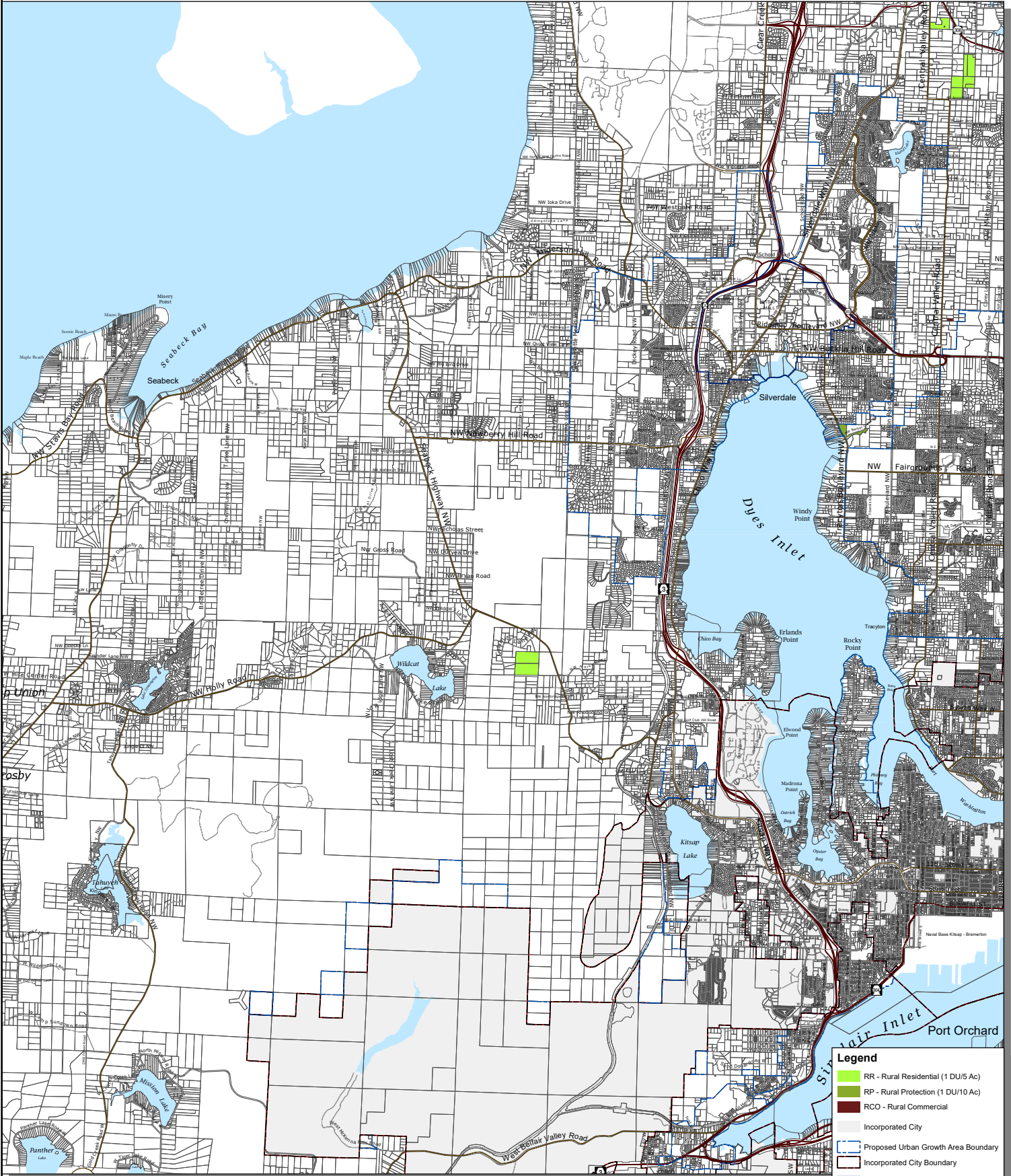


Kitsap County Department of Community Development
614 Division Street, MS-36, Port Orchard, Washington 98366
VOICE (360) 337-5777 (Kitsap One) * <https://www.kitsapgov.com/>



Central Area - Kitsap County

DRAFT



Legend

- RR - Rural Residential (1 DU/5 Ac)
- RP - Rural Protection (1 DU/10 Ac)
- RCO - Rural Commercial
- Incorporated City
- Proposed Urban Growth Area Boundary
- Incorporated City Boundary
- Proposed Regional Growth Center
- Tax Parcel
- State Highway
- Collector / Arterial
- Local Access; Local Road
- Railroad Lines

Rural Zoning Changes - Alternative 3

FINAL DRAFT



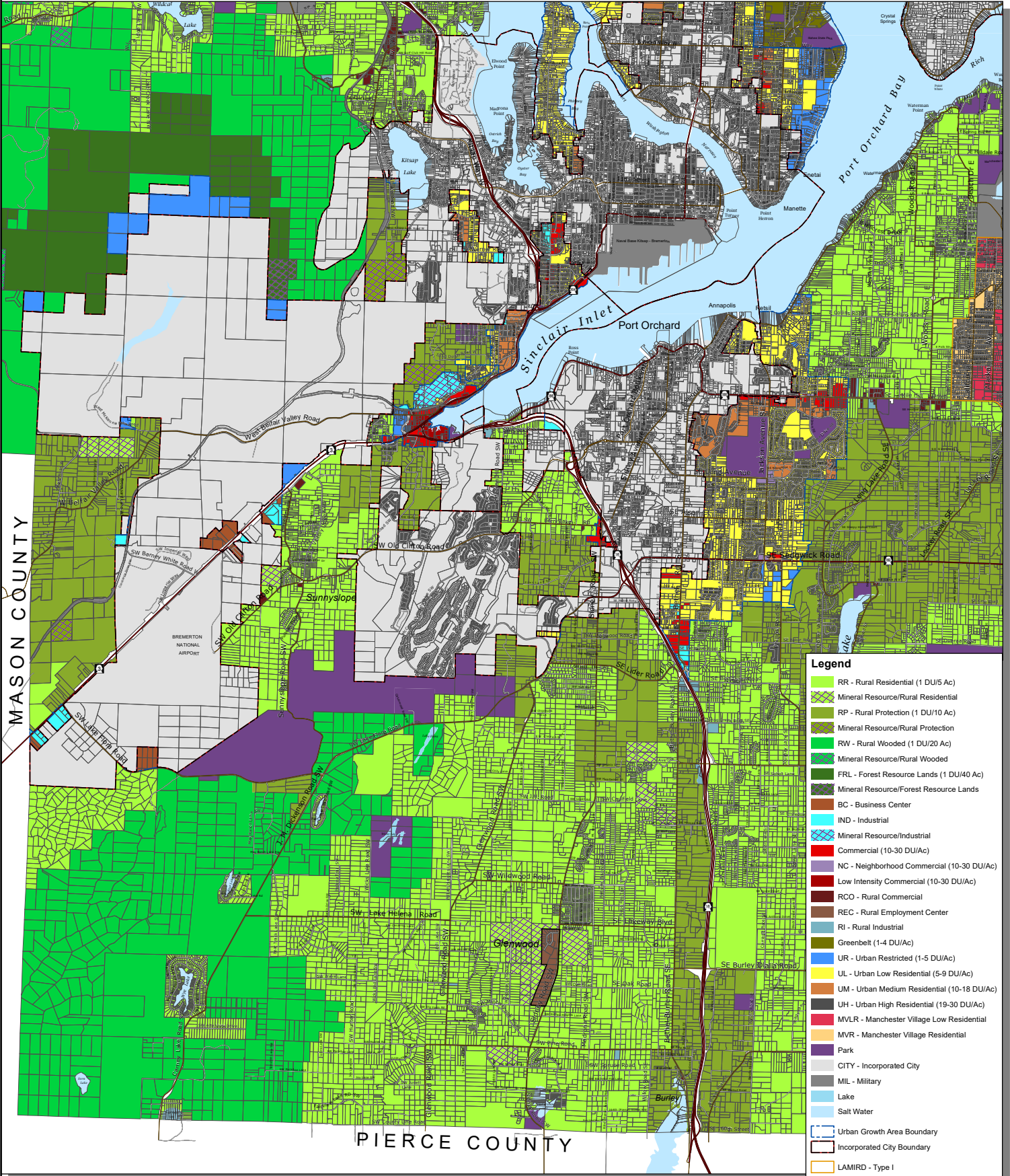
Kitsap County Department of Community Development
 614 Division Street, MS-36, Port Orchard, Washington 98366
 VOICE (360) 337-5777 (Kitsap One) * <https://www.kitsapgov.com/>

This map was created from existing map sources, not from field surveys. Determination of fitness for use lies with the user, as does the responsibility for understanding the accuracy and limitations of this map and data.
 The information on this map may have been collected from various sources and can change over time without notice.
 While great care was taken in making this map, there is no guarantee or warranty of its accuracy as to labeling, placement or location of any geographic features present. This map is intended for informational purposes only and is not a substitute for a field survey.
 Kitsap County and its officials and employees assume no responsibility or legal liability for the accuracy, completeness, reliability, or timeliness of any information on this map.
 Ord No 612-2022 Comprehensive Plan Amendment
 Map Published Date: April 26, 2023



South Area - Kitsap County

DRAFT



Legend	
[Light Green]	RR - Rural Residential (1 DU/5 Ac)
[Light Green with Diagonal Lines]	Mineral Resource/Rural Residential
[Light Green]	RP - Rural Protection (1 DU/10 Ac)
[Light Green]	Mineral Resource/Rural Protection
[Light Green]	RW - Rural Wooded (1 DU/20 Ac)
[Light Green]	Mineral Resource/Rural Wooded
[Dark Green]	FRL - Forest Resource Lands (1 DU/40 Ac)
[Dark Green]	Mineral Resource/Forest Resource Lands
[Orange]	BC - Business Center
[Light Blue]	IND - Industrial
[Light Blue with Diagonal Lines]	Mineral Resource/Industrial
[Red]	Commercial (10-30 DU/Ac)
[Red]	NC - Neighborhood Commercial (10-30 DU/Ac)
[Red]	Low Intensity Commercial (10-30 DU/Ac)
[Dark Red]	RCO - Rural Commercial
[Dark Red]	REC - Rural Employment Center
[Brown]	RI - Rural Industrial
[Dark Green]	Greenbelt (1-4 DU/Ac)
[Blue]	UR - Urban Restricted (1-5 DU/Ac)
[Yellow]	UL - Urban Low Residential (5-9 DU/Ac)
[Orange]	UM - Urban Medium Residential (10-18 DU/Ac)
[Dark Grey]	UH - Urban High Residential (19-30 DU/Ac)
[Red]	MVLR - Manchester Village Low Residential
[Orange]	MVR - Manchester Village Residential
[Purple]	Park
[Grey]	CITY - Incorporated City
[Grey]	MIL - Military
[Light Blue]	Lake
[Light Blue]	Salt Water
[Dashed Line]	Urban Growth Area Boundary
[Solid Line]	Incorporated City Boundary
[Orange]	LAMIRD - Type I
[Grey]	LAMIRD - Type III
[Thin Grey Line]	Tax Parcel
[Thick Red Line]	State Highway
[Thin Grey Line]	Collector / Arterial
[Thin Grey Line]	Local Access; Local Road
[Thin Grey Line]	Railroad Lines

This map was created from existing map sources, not from field surveys. Determination of fitness for use lies with the user, as does the responsibility for understanding the accuracy and limitations of this map and data.

The information on this map may have been collected from various sources and can change over time without notice.

While great care was taken in making this map, there is no guarantee or warranty of its accuracy as to labeling, placement or location of any geographic features present. This map is intended for informational purposes only and is not a substitute for a field survey.

Kitsap County and its officials and employees assume no responsibility or legal liability for the accuracy, completeness, reliability, or timeliness of any information on this map.

Ord No 612-2022 Comprehensive Plan Amendment
Map Published Date: April 26, 2023

0 0.375 0.75 1.5 2.25 3 Miles

Zoning - Alternative 1

FINAL DRAFT

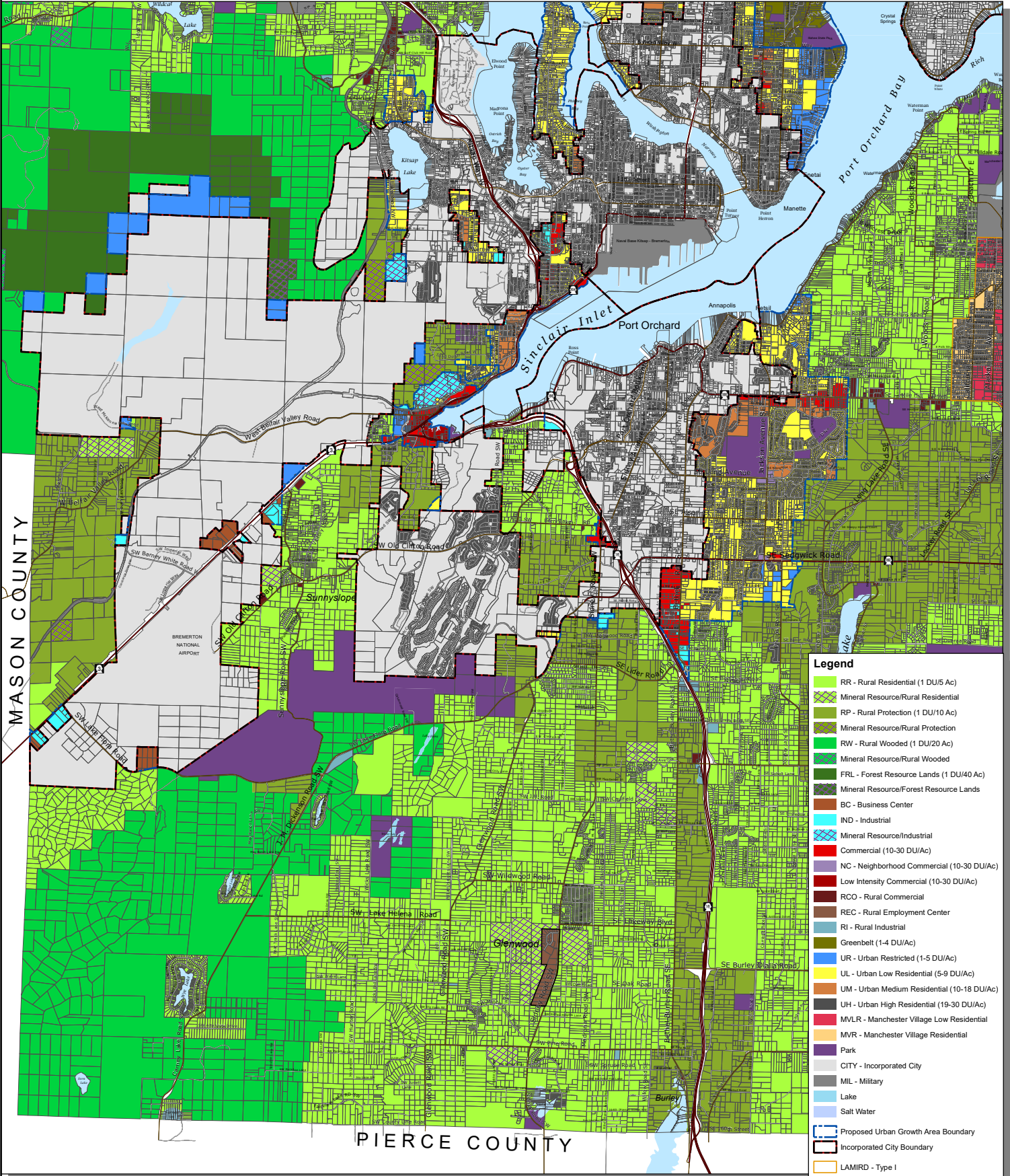


Kitsap County Department of Community Development
614 Division Street, MS-36, Port Orchard, Washington 98366
VOICE (360) 337-5777 (Kitsap One) * <https://www.kitsapgov.com/>



South Area - Kitsap County

DRAFT



- Legend**
- RR - Rural Residential (1 DU/5 Ac)
 - Mineral Resource/Rural Residential
 - RP - Rural Protection (1 DU/10 Ac)
 - Mineral Resource/Rural Protection
 - RW - Rural Wooded (1 DU/20 Ac)
 - Mineral Resource/Rural Wooded
 - FRL - Forest Resource Lands (1 DU/40 Ac)
 - Mineral Resource/Forest Resource Lands
 - BC - Business Center
 - IND - Industrial
 - Mineral Resource/Industrial
 - Commercial (10-30 DU/Ac)
 - NC - Neighborhood Commercial (10-30 DU/Ac)
 - Low Intensity Commercial (10-30 DU/Ac)
 - RCO - Rural Commercial
 - REC - Rural Employment Center
 - RI - Rural Industrial
 - Greenbelt (1-4 DU/Ac)
 - UR - Urban Restricted (1-5 DU/Ac)
 - UL - Urban Low Residential (5-9 DU/Ac)
 - UM - Urban Medium Residential (10-18 DU/Ac)
 - UH - Urban High Residential (19-30 DU/Ac)
 - MVLR - Manchester Village Low Residential
 - MV/R - Manchester Village Residential
 - Park
 - CITY - Incorporated City
 - MIL - Military
 - Lake
 - Salt Water
 - Proposed Urban Growth Area Boundary
 - Incorporated City Boundary
 - LAMIRD - Type I
 - LAMIRD - Type III
 - Tax Parcel
 - State Highway
 - Collector / Arterial
 - Local Access; Local Road
 - Railroad Lines

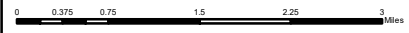
This map was created from existing map sources, not from field surveys. Determination of fitness for use lies with the user, as does the responsibility for understanding the accuracy and limitations of this map and data. The information on this map may have been collected from various sources and can change over time without notice. While great care was taken in making this map, there is no guarantee or warranty of its accuracy as to labeling, placement or location of any geographic features present. This map is intended for informational purposes only and is not a substitute for a field survey. Kitsap County and its officials and employees assume no responsibility or legal liability for the accuracy, completeness, reliability, or timeliness of any information on this map. Ord No 612-2022 Comprehensive Plan Amendment. Map Published Date: April 26, 2023.

Zoning - Alternative 2

FINAL DRAFT

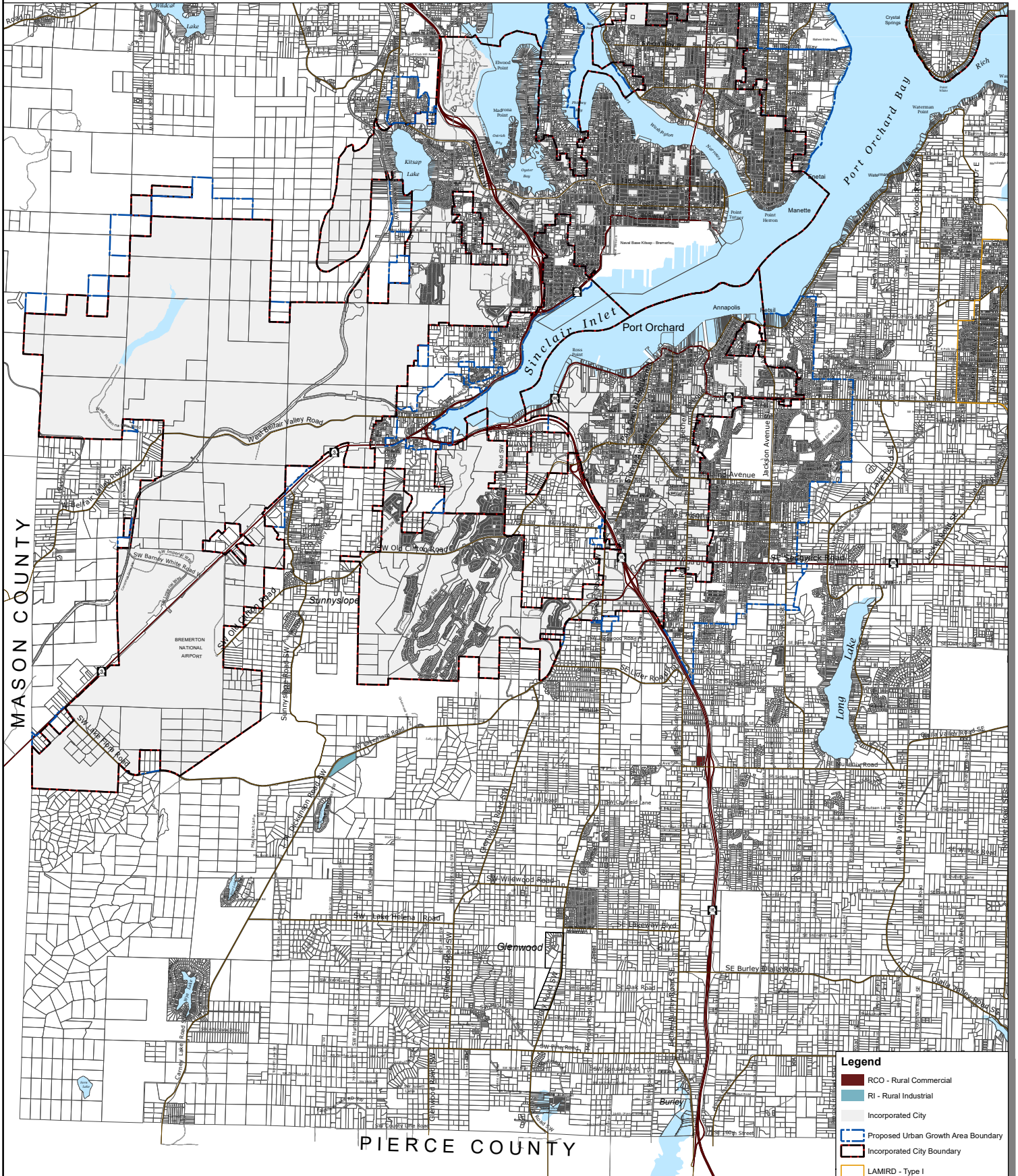


Kitsap County Department of Community Development
 614 Division Street, MS-36, Port Orchard, Washington 98366
 VOICE (360) 337-5777 (Kitsap One) * <https://www.kitsapgov.com/>



South Area - Kitsap County

DRAFT



Legend

- RCO - Rural Commercial
- RI - Rural Industrial
- Incorporated City
- Proposed Urban Growth Area Boundary
- Incorporated City Boundary
- LAMIRD - Type I
- LAMIRD - Type III
- Tax Parcel
- State Highway
- Collector / Arterial
- Local Access, Local Road
- Railroad Lines

Rural Zoning Changes - Alternative 2

FINAL DRAFT



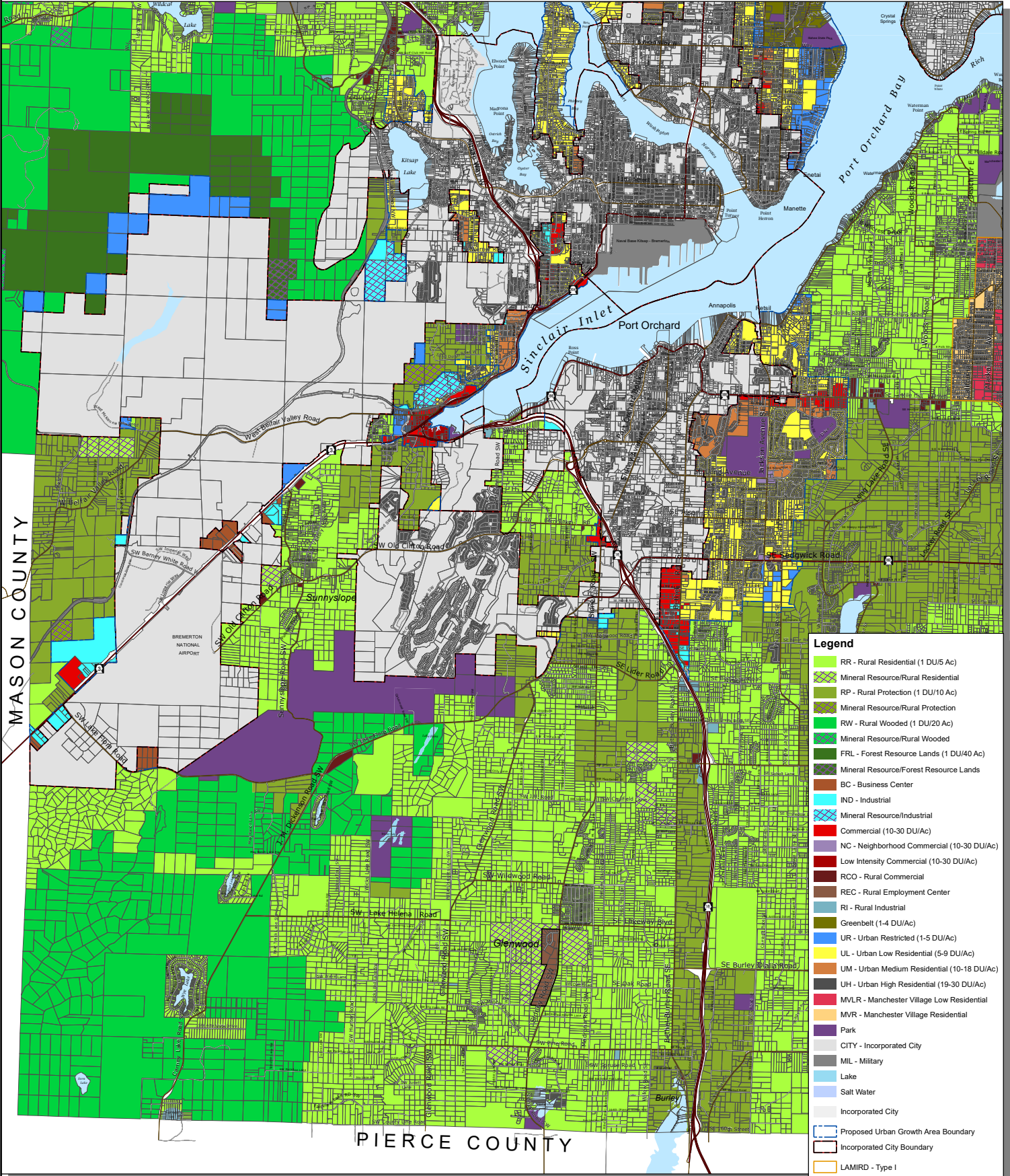
Kitsap County Department of Community Development
614 Division Street, MS-36, Port Orchard, Washington 98366
VOICE (360) 337-5777 (Kitsap One) * <https://www.kitsapgov.com/>

This map was created from existing map sources, not from field surveys. Determination of fitness for use lies with the user, as does the responsibility for understanding the accuracy and limitations of this map and data.
The information on this map may have been collected from various sources and can change over time without notice.
While great care was taken in making this map, there is no guarantee or warranty of its accuracy as to labeling, placement or location of any geographic features present. This map is intended for informational purposes only and is not a substitute for a field survey.
Kitsap County and its officials and employees assume no responsibility or legal liability for the accuracy, completeness, reliability, or timeliness of any information on this map.
Ord No 612-2022 Comprehensive Plan Amendment
Map Published Date: April 26, 2023

0 0.375 0.75 1.5 2.25 3 Miles

South Area - Kitsap County

DRAFT



- ### Legend
- RR - Rural Residential (1 DU/5 Ac)
 - Mineral Resource/Rural Residential
 - RP - Rural Protection (1 DU/10 Ac)
 - Mineral Resource/Rural Protection
 - RW - Rural Wooded (1 DU/20 Ac)
 - Mineral Resource/Rural Wooded
 - FRL - Forest Resource Lands (1 DU/40 Ac)
 - Mineral Resource/Forest Resource Lands
 - BC - Business Center
 - IND - Industrial
 - Mineral Resource/Industrial
 - Commercial (10-30 DU/Ac)
 - NC - Neighborhood Commercial (10-30 DU/Ac)
 - Low Intensity Commercial (10-30 DU/Ac)
 - RCO - Rural Commercial
 - REC - Rural Employment Center
 - RI - Rural Industrial
 - Greenbelt (1-4 DU/Ac)
 - UR - Urban Restricted (1-5 DU/Ac)
 - YL - Urban Low Residential (5-9 DU/Ac)
 - UM - Urban Medium Residential (10-18 DU/Ac)
 - UH - Urban High Residential (19-30 DU/Ac)
 - MVLR - Manchester Village Low Residential
 - MVR - Manchester Village Residential
 - Park
 - CITY - Incorporated City
 - MIL - Military
 - Lake
 - Salt Water
 - Incorporated City
 - Proposed Urban Growth Area Boundary
 - Incorporated City Boundary
 - LAMIRD - Type I
 - LAMIRD - Type III
 - Tax Parcel
 - State Highway
 - Collector / Arterial
 - Local Access; Local Road
 - Railroad Lines

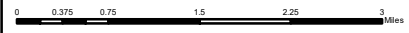
Zoning - Alternative 3

FINAL DRAFT



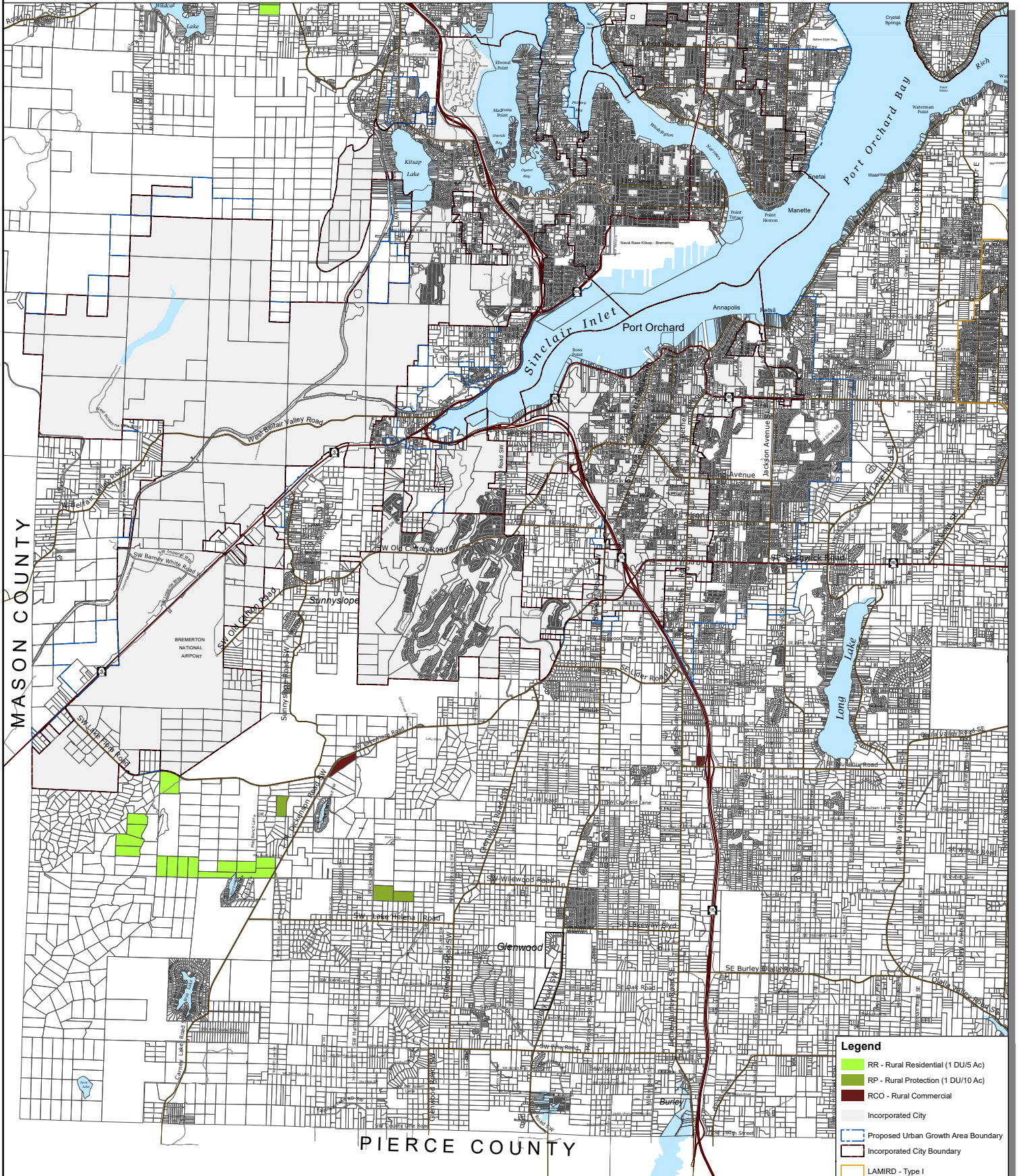
Kitsap County Department of Community Development
 614 Division Street, MS-36, Port Orchard, Washington 98366
 VOICE (360) 337-5777 (Kitsap One) * <https://www.kitsapgov.com/>

This map was created from existing map sources, not from field surveys. Determination of fitness for use lies with the user, as does the responsibility for understanding the accuracy and limitations of this map and data.
 The information on this map may have been collected from various sources and can change over time without notice.
 While great care was taken in making this map, there is no guarantee or warranty of its accuracy as to labeling, placement or location of any geographic features present. This map is intended for informational purposes only and is not a substitute for a field survey.
 Kitsap County and its officials and employees assume no responsibility or legal liability for the accuracy, completeness, reliability, or timeliness of any information on this map.
 Ord No 612-2022 Comprehensive Plan Amendment
 Map Published Date: April 26, 2023



South Area - Kitsap County

DRAFT



Legend

- RR - Rural Residential (1 DU/5 Ac)
- RP - Rural Protection (1 DU/10 Ac)
- RCO - Rural Commercial
- Incorporated City
- Proposed Urban Growth Area Boundary
- Incorporated City Boundary
- LAMIRD - Type I
- LAMIRD - Type III
- Tax Parcel
- State Highway
- Collector / Arterial
- Local Access, Local Road
- Railroad Lines

Rural Zoning Changes - Alternative 3

FINAL DRAFT



Kitsap County Department of Community Development
614 Division Street, MS-36, Port Orchard, Washington 98366
VOICE (360) 337-5777 (Kitsap One) * <https://www.kitsapgov.com/>

This map was created from existing map sources, not from field surveys. Determination of fitness for use lies with the user, as does the responsibility for understanding the accuracy and limitations of this map and data.
The information on this map may have been collected from various sources and can change over time without notice.
While great care was taken in making this map, there is no guarantee or warranty of its accuracy as to labeling, placement or location of any geographic features present. This map is intended for informational purposes only and is not a substitute for a field survey.
Kitsap County and its officials and employees assume no responsibility or legal liability for the accuracy, completeness, reliability, or timeliness of any information on this map.
Ord No 812-2022 Comprehensive Plan Amendment
Map Published Date: April 26, 2023

