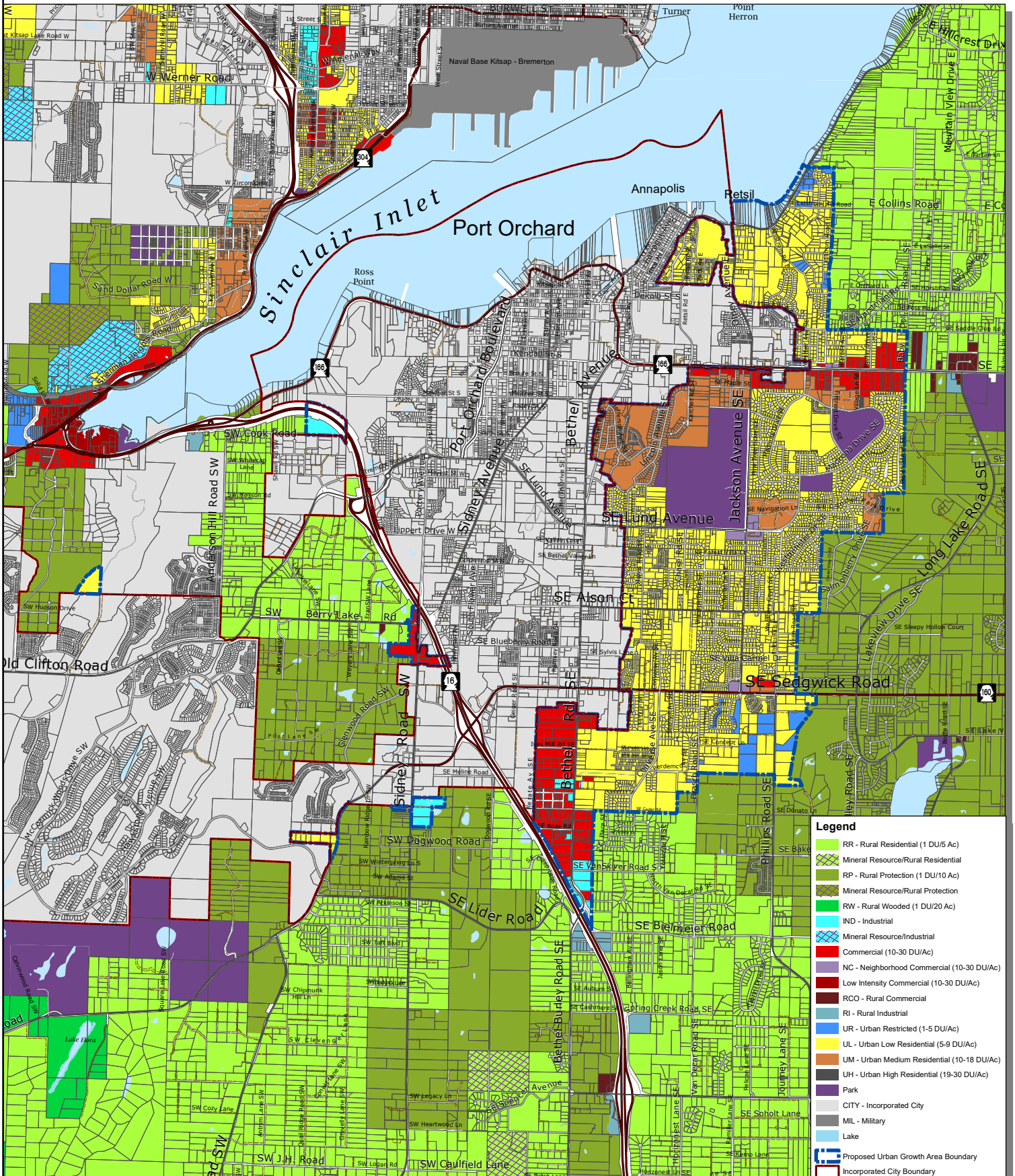


# Port Orchard Urban Growth Area

DRAFT



Legend	
[Light Green]	RR - Rural Residential (1 DU/5 Ac)
[Green with diagonal lines]	Mineral Resource/Rural Residential
[Light Green]	RP - Rural Protection (1 DU/10 Ac)
[Green]	Mineral Resource/Rural Protection
[Light Green]	RW - Rural Wooded (1 DU/20 Ac)
[Blue]	IND - Industrial
[Light Blue]	Mineral Resource/Industrial
[Red]	Commercial (10-30 DU/Ac)
[Purple]	NC - Neighborhood Commercial (10-30 DU/Ac)
[Dark Red]	Low Intensity Commercial (10-30 DU/Ac)
[Dark Purple]	RCO - Rural Commercial
[Light Blue]	RI - Rural Industrial
[Blue]	UR - Urban Restricted (1-5 DU/Ac)
[Yellow]	UL - Urban Low Residential (5-9 DU/Ac)
[Light Green]	UM - Urban Medium Residential (10-18 DU/Ac)
[Dark Green]	UH - Urban High Residential (19-30 DU/Ac)
[Dark Blue]	Park
[Grey]	CITY - Incorporated City
[Dark Grey]	MIL - Military
[Light Blue]	Lake
[Red outline]	Proposed Urban Growth Area Boundary
[Red outline]	Incorporated City Boundary
[Thick black line]	State Highway
[Thin black line]	Collector / Arterial
[Dashed black line]	Local Access; Local Road
[Dotted black line]	Easement
[Black line with cross-ticks]	Railroad Lines
[Blue wavy lines]	Greater Puget Sound hydrology

This map was created from existing map sources, not from field surveys. Determination of fitness for use lies with the user, as does the responsibility for understanding the accuracy and limitations of this map and data.

The information on this map may have been collected from various sources and can change over time without notice.

While great care was taken in making this map, there is no guarantee or warranty of its accuracy as to labeling, placement or location of any geographic features present. This map is intended for informational purposes only and is not a substitute for a field survey.

Kitsap County and its officials and employees assume no responsibility or legal liability for the accuracy, completeness, reliability, or timeliness of any information on this map.

Ord No 812-2022 Comprehensive Plan Amendment  
Map Published Date: April 26, 2023

## Zoning - Alternative 2

FINAL DRAFT



Kitsap County Department of Community Development  
614 Division Street, MS-36, Port Orchard, Washington 98366  
VOICE (360) 337-5777 (Kitsap One) \* <https://www.kitsapgov.com/>

