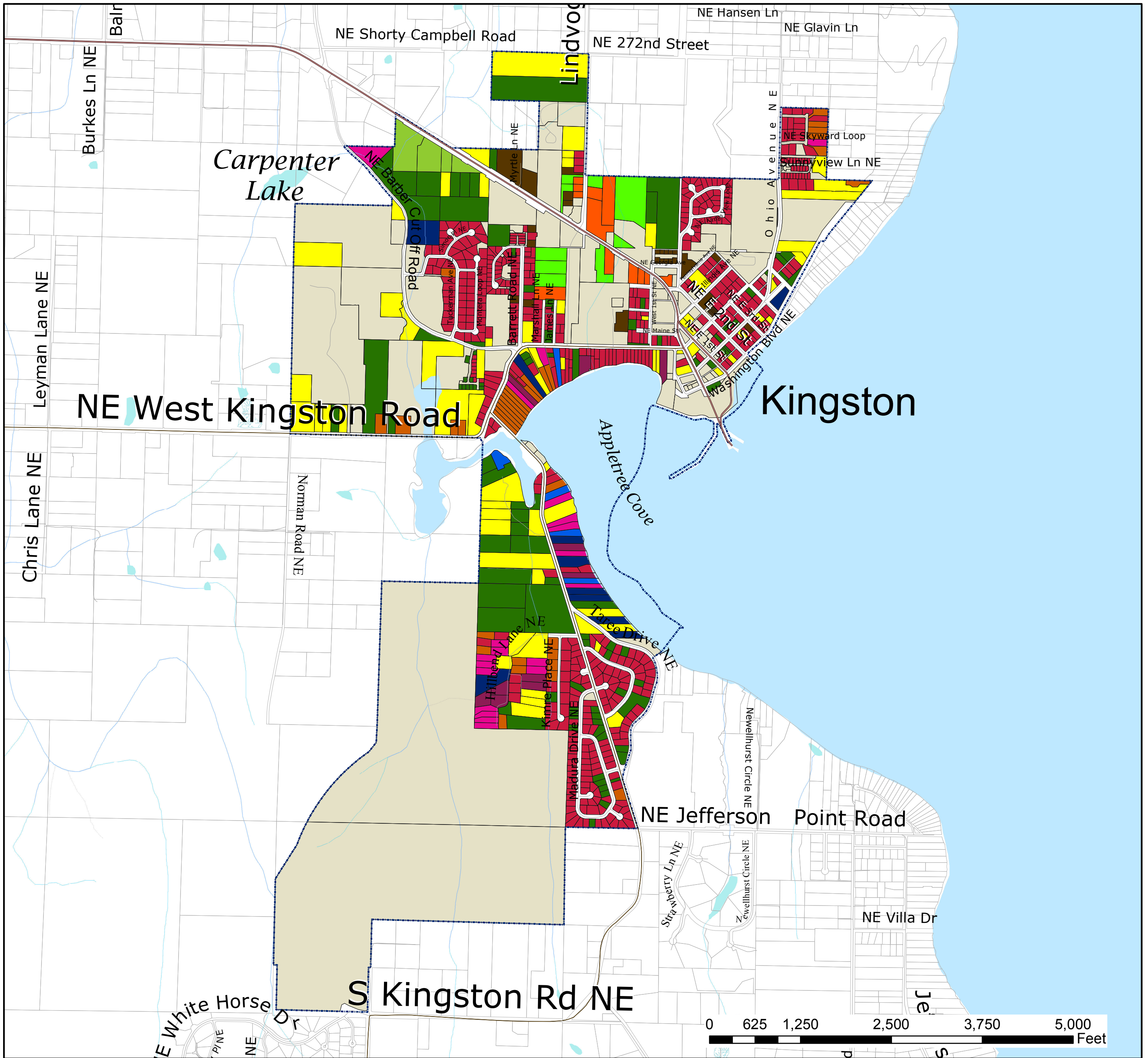


Kingston Urban Growth Area



Developed Parcel	Underutilized - Commercial
Parcel not considered for additional capacity	Vacant Land - Commercial
Underutilized - Residential	Underutilized - Industrial
Vacant Land - Residential	Vacant Land - Industrial
Parcel less than .50 acres	Urban Growth Area Boundary
Parcel density less than 2.5 times the zoning size	Incorporated City Boundary
Parcel density 2.5 - 4 times zoning size and building value is less than 1/2 median value	
Parcel density 4 - 5 times zoning size and building value is less than median value	
Parcel density 5 - 10 times zoning size and building value is less than 1.5 x median value	
Shoreline parcel less than 1.00 acre	
Multi-Family	
Waterbodies (defined in WAC 222-16-030)	Watercourses (defined in WAC 222-16-030)
Bay, estuary, Puget Sound	(S) Designated Shoreline of the State
Lake, Pond, Reservoir, Gravel pit or quarry filled with water	(F) Fish Habitat
DNR, NWI, and Surveyed Wetlands	(N) Non-fish Habitat
Tax Parcel	(U) Unknown, unmodeled hydrographic feature.
	State Highway
	Major Road
	Collector / Arterial
	Local Access, Local Road
	Railroad Lines

Land Capacity Analysis

This map was created from existing map sources, not from field surveys. While great care was taken in using the most current map sources available, no warranties of any sort, including accuracy, fitness, or merchantability accompany this product. The user of this map assumes responsibility for determining its suitability for its intended use.

* THIS MAP IS NOT A SUBSTITUTE FOR FIELD SURVEY *

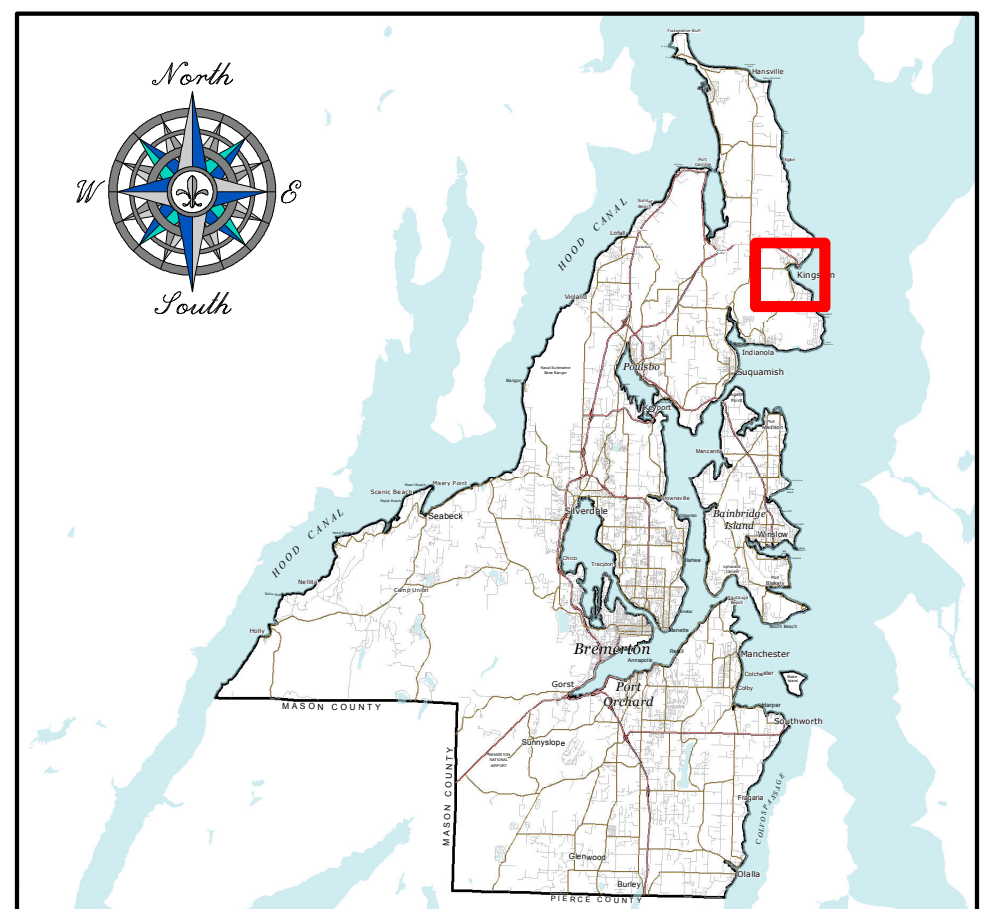
Vacant and Underutilized parcels created from Land Capacity Analysis were done as part of the Kitsap County Buildable Lands Analysis report. This data represents analysis from parcel data as reflected on January 2, 2012. Continuing permit and development activity will alter the vacant and underutilized parcels results.

DRAFT

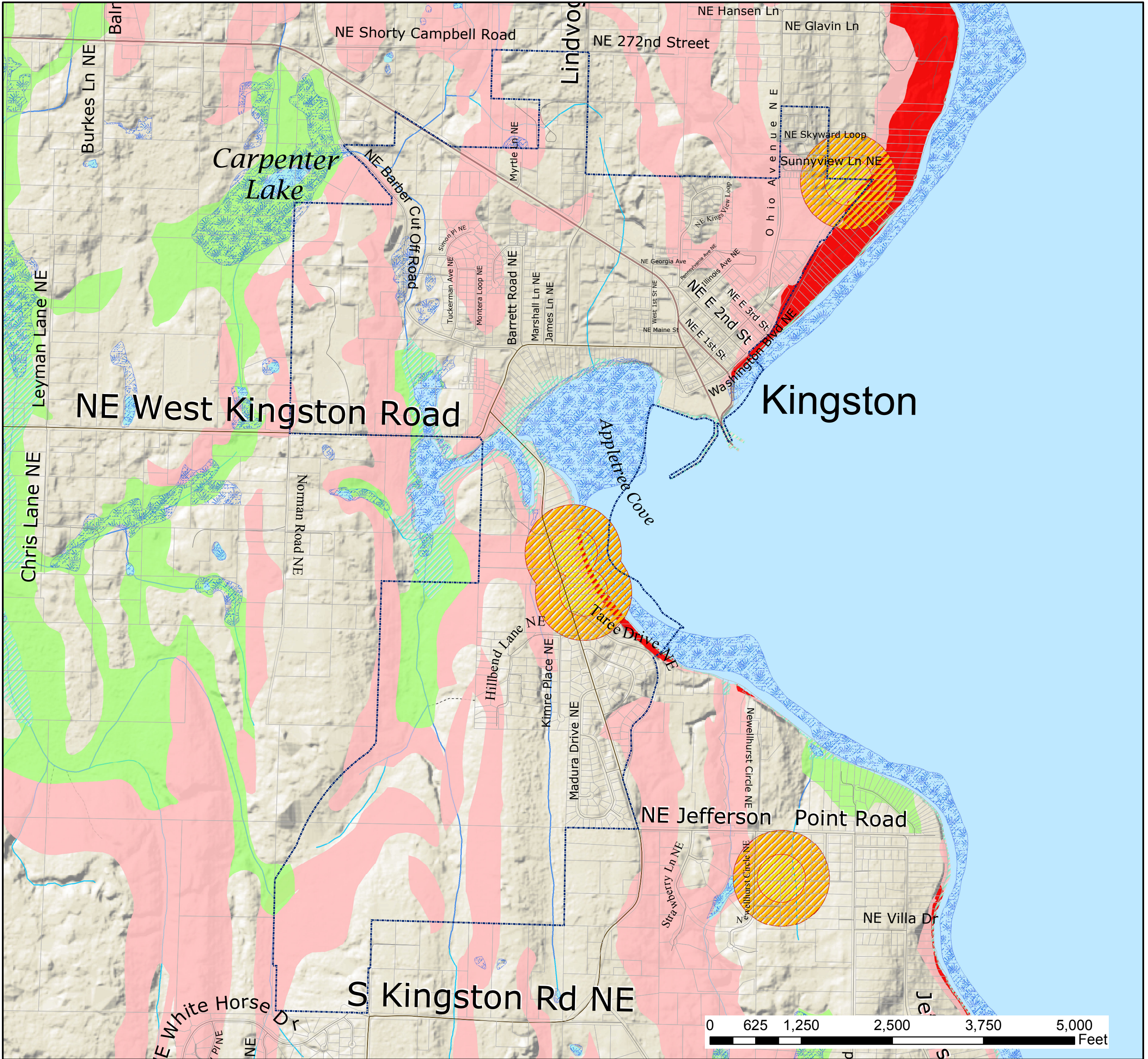
Map Date: September, 2013



Kitsap County Department of
Community Development
614 Division Street, MS-36
Port Orchard, Washington 98366
VOICE (360) 337-5777 * FAX (360) 337-4925



Kingston Urban Growth Area



Waterbodies
(defined in WAC 222-16-030)
WaterBody Cartographic Feature Code

- Bay, estuary, Puget Sound
- Lake, Pond, Reservoir, Gravel pit or quarry filled with water
- Includes DNR, NWI and Surveyed Wetlands

Watercourses
(defined in WAC 222-16-030)
Fish Habitat Water Type Code

- (S) Designated Shoreline of the State
- (F) Fish Habitat
- (N) Non-fish Habitat
- (U) Unknown, unmodeled hydrographic feature.

Geohazards
Description

- High Hazard Areas
- Moderate Hazard Areas

Eagle Habitat Buffers

- 330 Feet
- 660 Feet

Other Features:

- 100' Contours
- 20' Contours
- Tax Parcels
- Urban Growth Area Boundary
- Incorporated City Boundary
- State Highway
- Major Road
- Collector / Arterial
- Local Access; Local Road
- 100 Year Floodplain
The primary risk classification shown is the 1-percent-annual-chance flood event
- Potential Wetlands

Building Limitations

This map was created from existing map sources, not from field surveys. While great care was taken in using the most current map sources available, no warranties of any sort, including accuracy, fitness, or merchantability accompany this product. The user of this map assumes responsibility for determining its suitability for its intended use.

* THIS MAP IS NOT A SUBSTITUTE FOR FIELD SURVEY *

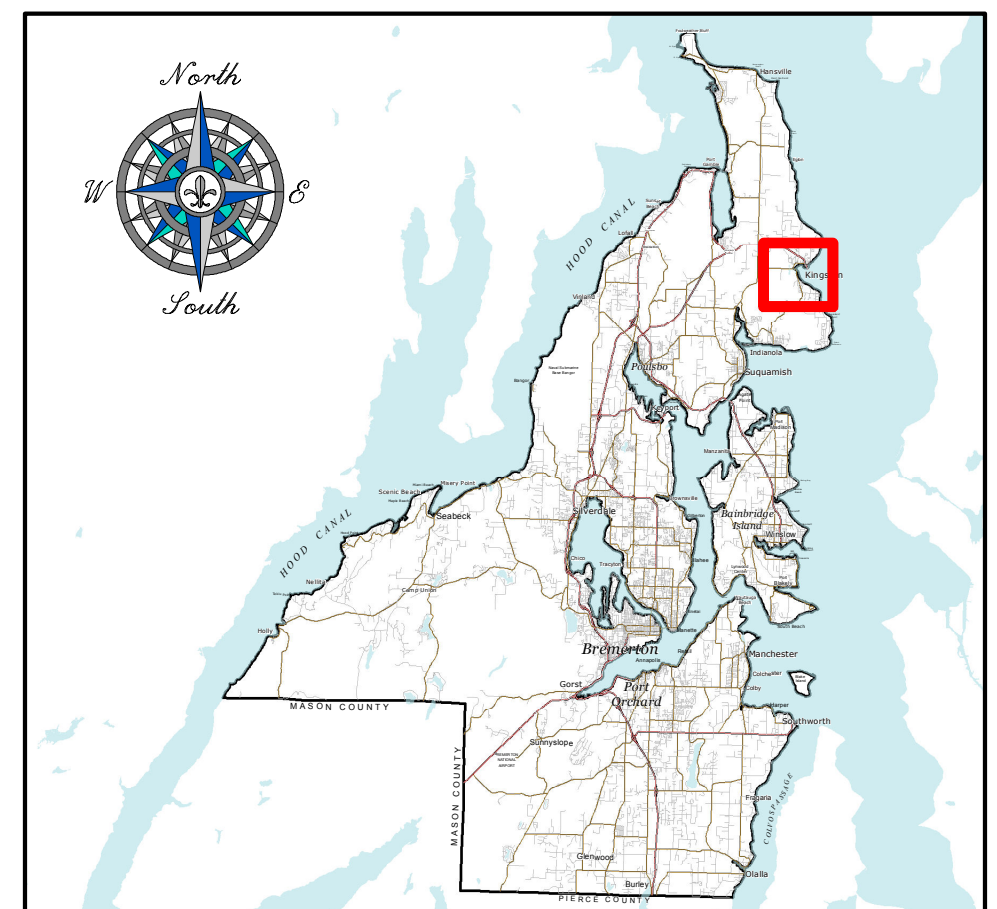
Kitsap County Code
Title 19 - Critical Areas Ordinance

DRAFT

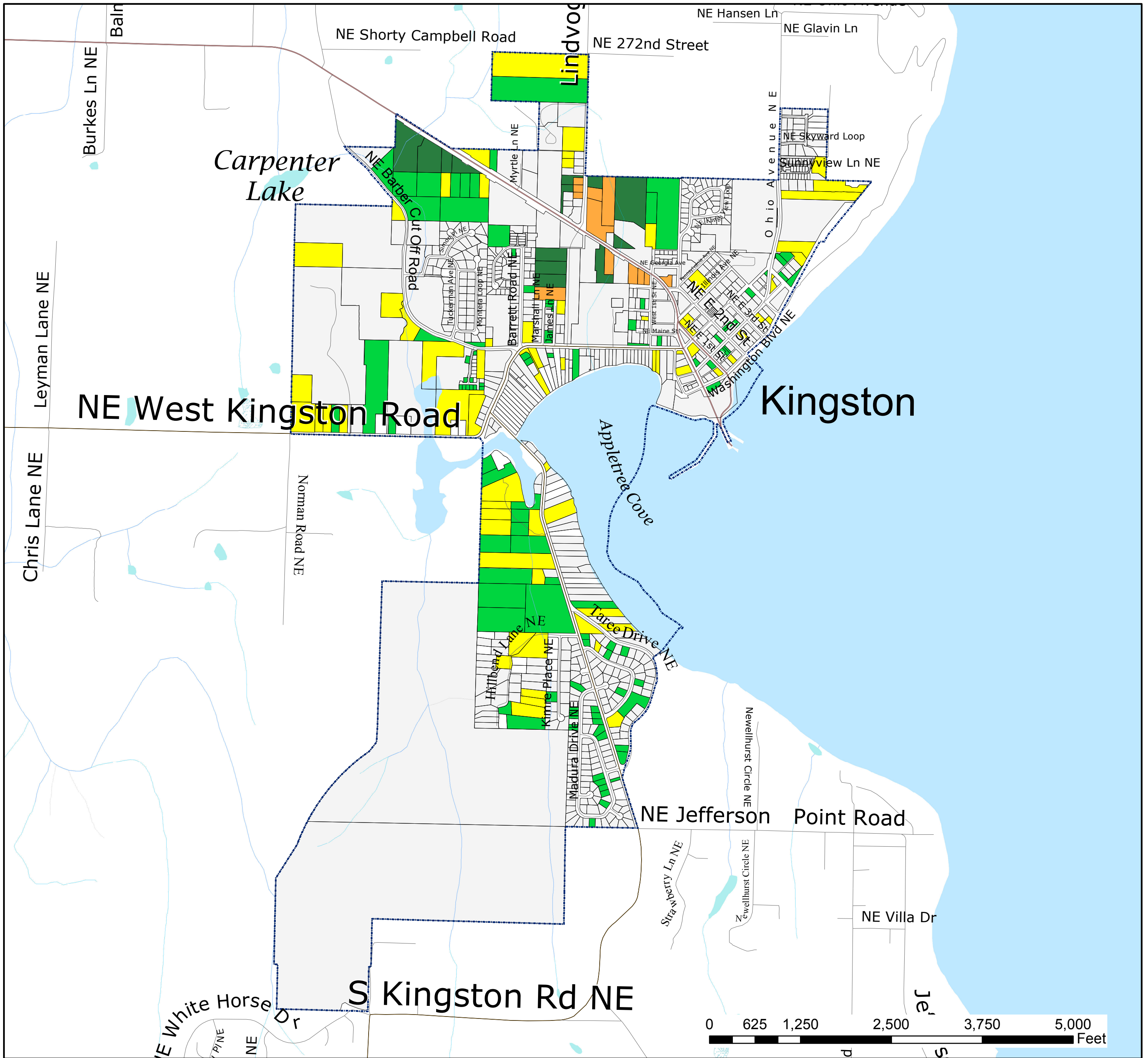
Map Date: October, 2013



Kitsap County Department of
Community Development
614 Division Street, MS-36
Port Orchard, Washington 98366
VOICE (360) 337-5777 * FAX (360) 337-4925



Kingston Urban Growth Area



<p>Developed/Exempt</p> <p>Parcels removed from Urban Land Supply described as follows: <i>Utilities/Transportation parcels</i> <i>Current Use/Common area parcels</i> <i>Parks/Recreation parcels</i> <i>Institutional parcels</i> <i>Governmental services</i></p> <p>Residential Land</p> <p>Underutilized</p> <p>Vacant Land</p> <p>Commercial Land</p> <p>Underutilized</p> <p>Vacant Land</p> <p>Urban Growth Area Boundary</p> <p>Incorporated City Boundary</p> <p>Tax Parcel Boundary</p>	<p>State Highway</p> <p>Major Road</p> <p>Collector / Arterial</p> <p>Local Access; Local Road</p> <p>WaterBody Cartographic Feature</p> <p>Bay, estuary, Puget Sound</p> <p>Lake, Pond or Reservoir</p> <p>Includes DNR, NWI and Surveyed Wetlands</p> <p>Fish Habitat Water Type</p> <p>Designated Shoreline of the State</p> <p>Fish Habitat</p> <p>Non-fish Habitat</p> <p>Unknown, unmodeled hydrographic feature.</p>
---	---

Land Capacity Analysis

This map was created from existing map sources, not from field surveys. While great care was taken in using the most current map sources available, no warranties of any sort, including accuracy, fitness, or merchantability accompany this product. The user of this map assumes responsibility for determining its suitability for its intended use.

* THIS MAP IS NOT A SUBSTITUTE FOR FIELD SURVEY *

Vacant and Underutilized parcels created from Land Capacity Analysis were done as part of the Kitsap County Buildable Lands Analysis report. This data represents analysis from parcel data as reflected on January 2, 2012. Continuing permit and development activity will alter the vacant and underutilized parcels results.

DRAFT

Map Date: September, 2013



Kitsap County Department of
 Community Development
 614 Division Street, MS-36
 Port Orchard, Washington 98366
 VOICE (360) 337-5777 * FAX (360) 337-4925

