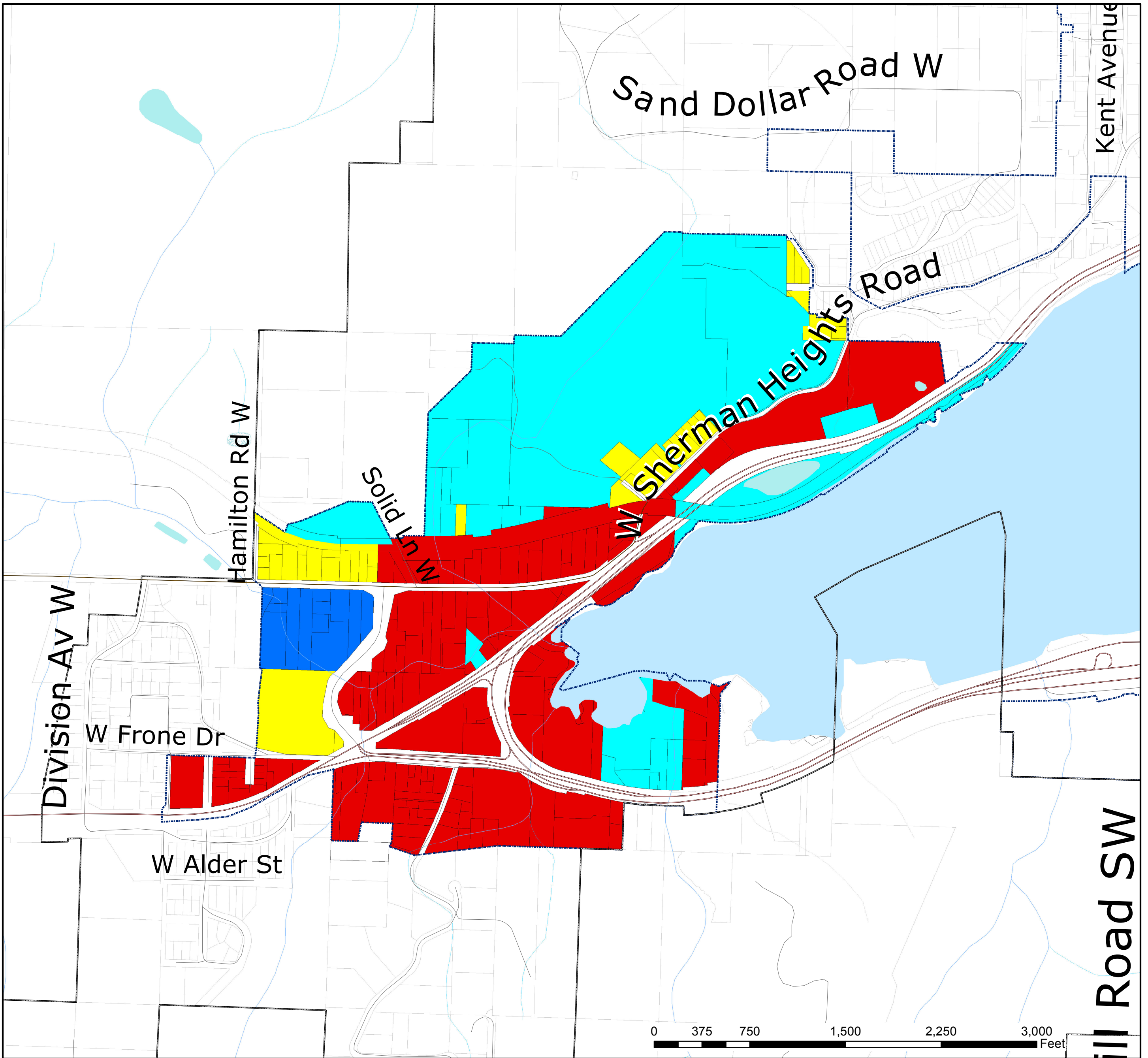


Gorst Urban Growth Area



Highway/Tourist Commercial (10-30 DU/Ac)	WaterBody Cartographic Feature
Industrial	Bay, estuary, Puget Sound
Urban Restricted (1-5 DU/Ac)	Lake, Pond or Reservoir
Urban Low Residential (5-9 DU/Ac)	Includes DNR, NWI and Surveyed Wetlands
Urban Growth Area Boundary	Fish Habitat Water Type
Incorporated City Boundary	Designated Shoreline of the State
Tax Parcel Boundary	Fish Habitat
State Highway	Non-fish Habitat
Major Road	Unknown, unmodeled hydrographic feature.
Collector / Arterial	
Local Access; Local Road	

Zoning

KITSAP COUNTY COMPREHENSIVE PLANNING MAP SERIES
 This map was developed for general land use planning purposes.
 The user of this map must assume responsibility for determining its suitability for other purposes.

Amendments:

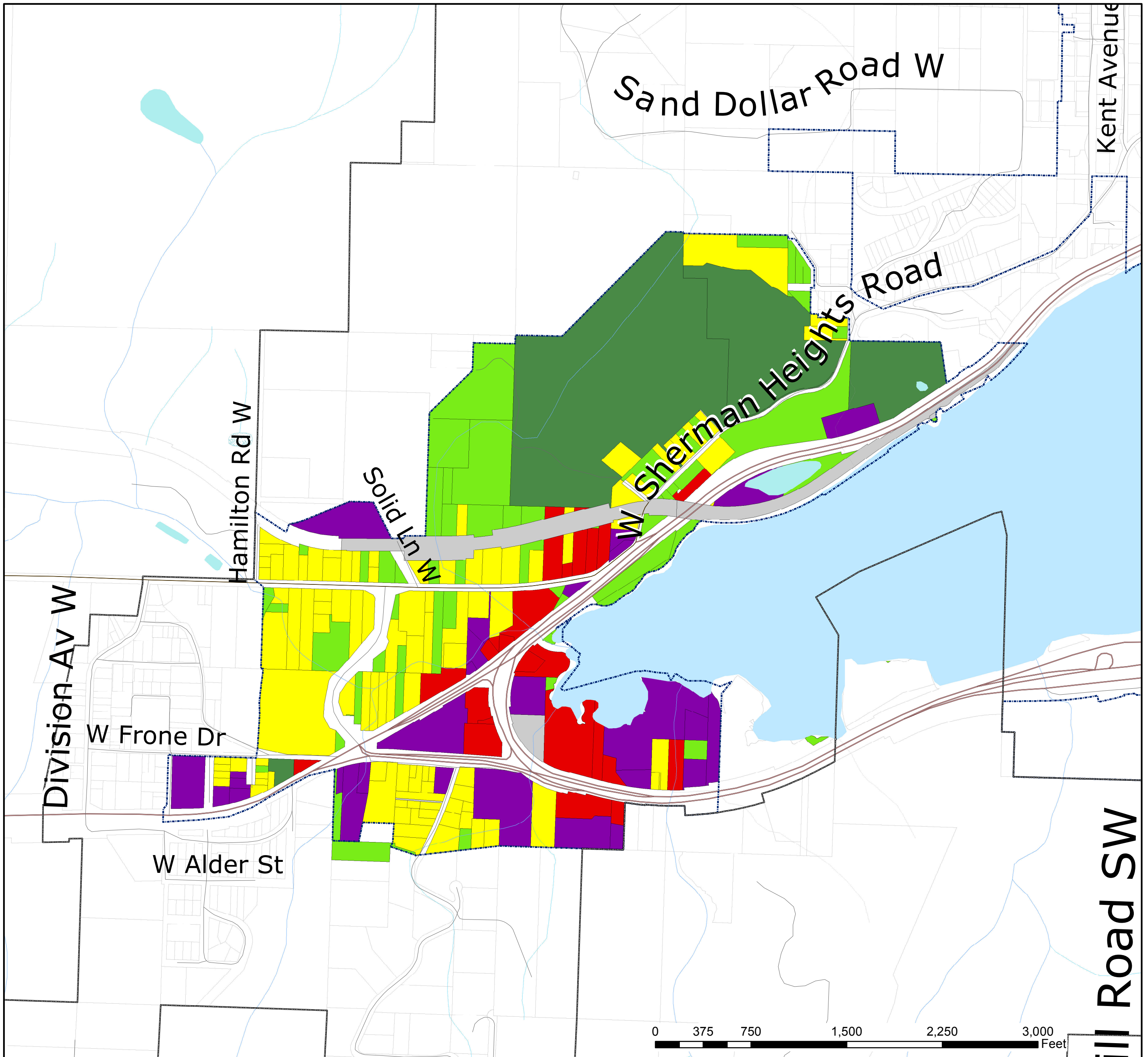
February 8, 1999	Forest Resource Lands
April 19, 1999	Squamish Rural Village
May 10, 1999	Modified Joint Planning Areas
July 21, 1999	Port Gamble Rural Historic Town
June 10, 2002	Manchester Community Plan
June 10, 2002	Ord No. 274-2002 Comprehensive Plan/Zoning Amendments
September 8, 2003	Res No. 168-2003 (Map Corrections)
December 8, 2003	Ord No. 311-2003 Comprehensive Plan/Zoning Amendments
October 25, 2004	George's Corner Commercial LAMIRD
October 25, 2004	Ord No. 326-2004 Comprehensive Plan/Zoning Amendments
December 22, 2005	Ord No. 352-2005 Comprehensive Plan/Zoning Amendments
December 11, 2006	Ord No. 370-2006 10-Year Update
June 11, 2007	Ord No. 384-2007 Repeal of Urban Holding Zone (UHA)
November 19, 2007	Ord No. 402-2007 Keyport Community Plan
December 31, 2007	Ord No. 405-2007 Comprehensive Plan/Zoning Amendments
October 13, 2008	Ord No. 414-2008 Comprehensive Plan/Zoning Amendments
December 23, 2008	Ord No. 420-2008 Comprehensive Plan/Zoning Amendments
December 14, 2009	Ord No. 443-2009 Comprehensive Plan/Zoning Amendments
December 15, 2010	Ord No. 467-2010 Comprehensive Plan/Zoning Amendments
December 15, 2010	Ord No. 467-2010 Type III LAMIRDS
August 31, 2012	Ord No. 493-2012 2012 Urban Growth Area - Remand
December 13, 2012	Ord No. 498-2012 Comprehensive Plan/Zoning Amendments



Kitsap County Department of
 Community Development
 614 Division Street, MS-36
 Port Orchard, Washington 98366
 VOICE (360) 337-5777 * FAX (360) 337-4925



Gorst Urban Growth Area



Cultural, Entertainment and Recreational	Urban Growth Area Boundary
Industrial and Manufacturing Services	Incorporated City Boundary
Residential	Tax Parcel Boundaries
Resource Production and Extraction	State Highway
Retail Trade	Major Road
Services	Collector / Arterial
Transportation, Communications and Utilities	Local Access; Local Road
Undeveloped Land and Water Areas	

Waterbodies (defined in WAC 222-16-030)
WaterBody Cartographic Feature Code

- Bay, estuary, Puget Sound
- Lake, Pond, Reservoir, Gravel pit or quarry filled with water
- DNR, NWI, and Surveyed Wetlands

Watercourses (defined in WAC 222-16-030)
Fish Habitat Water Type Code

- (S) Designated Shoreline of the State
- (F) Fish Habitat
- (N) Non-fish Habitat
- (U) Unknown, unmodeled hydrographic feature.

Current Land Use

This map was created from existing map sources, not from field surveys. While great care was taken in using the most current map sources available, no warranties of any sort, including accuracy, fitness, or merchantability accompany this product. The user of this map assumes responsibility for determining its suitability for its intended use.

*** THIS MAP IS NOT A SUBSTITUTE FOR FIELD SURVEY ***

Current Land Use was created from information provided by the Kitsap County Assessors property class code.

DRAFT

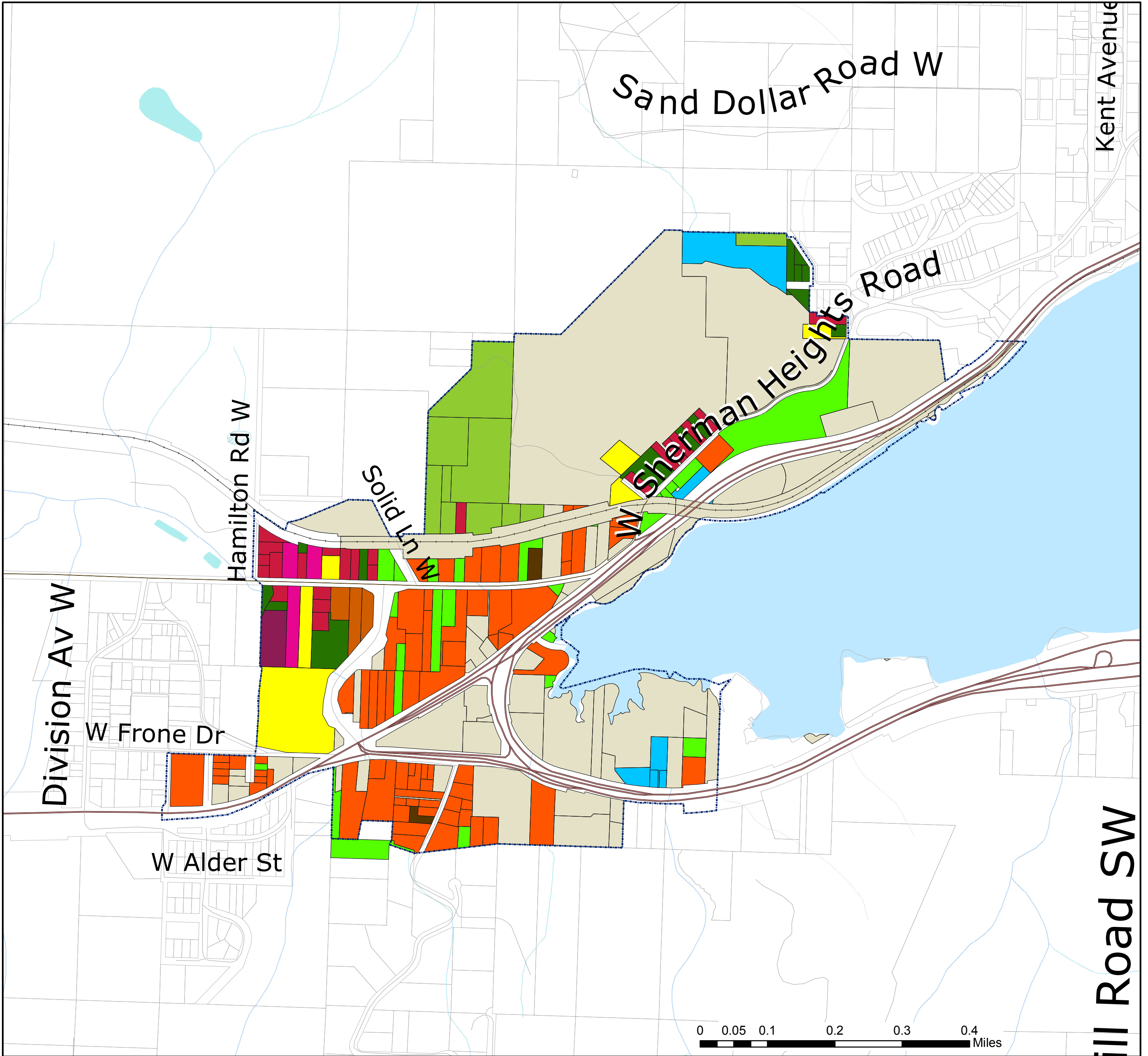
Map Date: September, 2013



Kitsap County Department of
 Community Development
 614 Division Street, MS-36
 Port Orchard, Washington 98366
 VOICE (360) 337-5777 * FAX (360) 337-4925



Gorst Urban Growth Area



Developed Parcel	Underutilized - Commercial
Parcel not considered for additional capacity	Vacant Land - Commercial
Underutilized - Residential	Underutilized - Industrial
Vacant Land - Residential	Vacant Land - Industrial
Parcel less than .50 acres	Urban Growth Area Boundary
Parcel density less than 2.5 times the zoning size	Incorporated City Boundary
Parcel density 2.5 - 4 times zoning size and building value is less than 1/2 median value	
Parcel density 4 - 5 times zoning size and building value is less than median value	
Parcel density 5 - 10 times zoning size and building value is less than 1.5 x median value	
Shoreline parcel less than 1.00 acre	
Multi-Family	

Waterbodies (defined in WAC 222-16-030)	Watercourses (defined in WAC 222-16-030)	State Highway
WaterBody Cartographic Feature Code	Fish Habitat Water Type Code	Major Road
Bay, estuary, Puget Sound	(S) Designated Shoreline of the State	Collector / Arterial
Lake, Pond, Reservoir, Gravel pit or quarry filled with water	(F) Fish Habitat	Local Access; Local Road
DNR, NWI, and Surveyed Wetlands	(N) Non-fish Habitat	Railroad Lines
Tax Parcel	(U) Unknown, unmodeled hydrographic feature.	

Land Capacity Analysis

This map was created from existing map sources, not from field surveys. While great care was taken in using the most current map sources available, no warranties of any sort, including accuracy, fitness, or merchantability accompany this product. The user of this map assumes responsibility for determining its suitability for its intended use.

*** THIS MAP IS NOT A SUBSTITUTE FOR FIELD SURVEY ***

Vacant and Underutilized parcels created from Land Capacity Analysis were done as part of the Kitsap County Buildable Lands Analysis report. This data represents analysis from parcel data as reflected on January 2, 2012. Continuing permit and development activity will alter the vacant and underutilized parcels results.

DRAFT

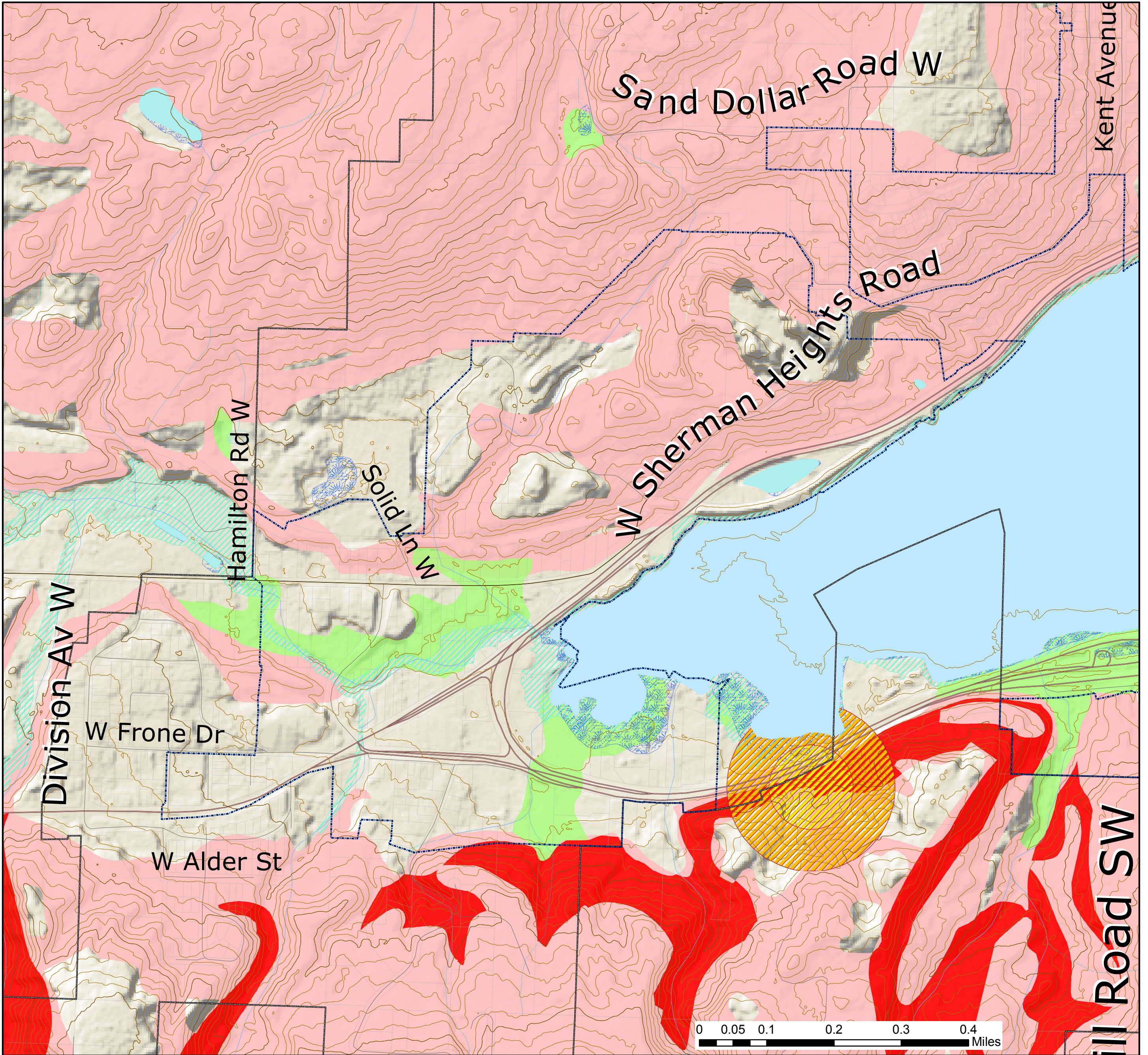
Map Date: September, 2013



Kitsap County Department of
Community Development
614 Division Street, MS-36
Port Orchard, Washington 98366
VOICE (360) 337-5777 * FAX (360) 337-4925



Gorst Urban Growth Area



Waterbodies (defined in WAC 222-16-030) WaterBody Cartographic Feature Code	100' Contours 20' Contours
Bay, estuary, Puget Sound	Eagle Habitat Buffers
Lake, Pond, Reservoir, Gravel pit or quarry filled with water	330 Feet
Includes DNR, NWI and Surveyed Wetlands	660 Feet
Watercourses (defined in WAC 222-16-030) Fish Habitat Water Type Code	Tax Parcels
(S) Designated Shoreline of the State	Urban Growth Area Boundary
(F) Fish Habitat	Incorporated City Boundary
(N) Non-fish Habitat	State Highway
(U) Unknown, unmodeled hydrographic feature.	Major Road
100 Year Floodplain <i>The primary risk classification shown is the 1-percent-annual-chance flood event</i>	Collector / Arterial
Potential Wetlands	Local Access; Local Road
Geohazards Description	
High Hazard Areas	
Moderate Hazard Areas	

Building Limitations

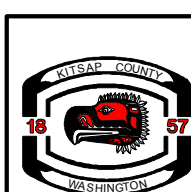
This map was created from existing map sources, not from field surveys. While great care was taken in using the most current map sources available, no warranties of any sort, including accuracy, fitness, or merchantability accompany this product. The user of this map assumes responsibility for determining its suitability for its intended use.

* THIS MAP IS NOT A SUBSTITUTE FOR FIELD SURVEY *

Kitsap County Code
Title 19 - Critical Areas Ordinance

DRAFT

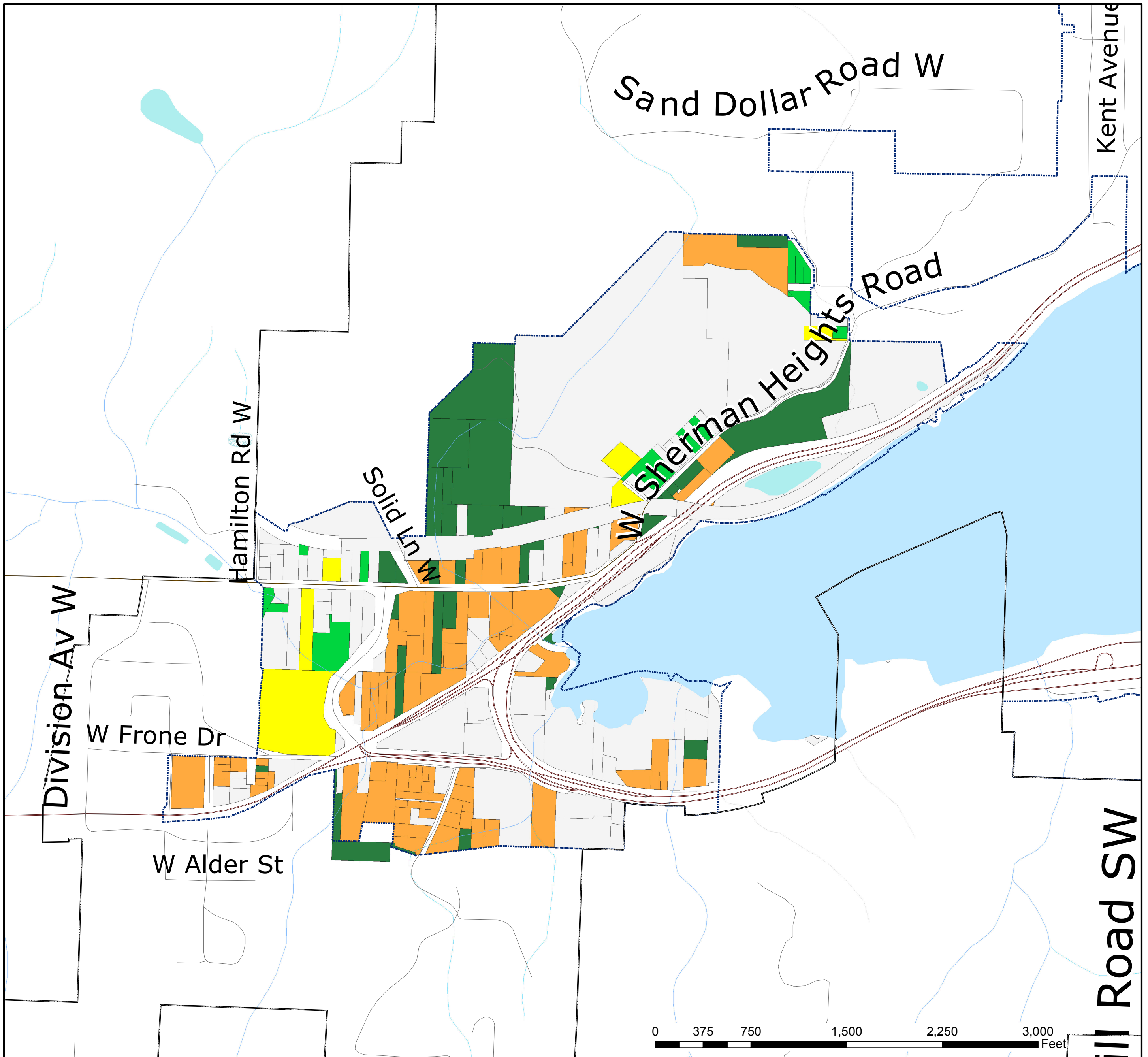
Map Date: October, 2013



Kitsap County Department of
Community Development
614 Division Street, MS-36
Port Orchard, Washington 98366
VOICE (360) 337-5777 * FAX (360) 337-4925



Gorst Urban Growth Area



Developed/Exempt	State Highway
<i>Parcels removed from Urban Land Supply described as follows:</i>	Major Road
<i>Utilities/Transportation parcels</i>	Collector / Arterial
<i>Current Use/Common area parcels</i>	Local Access; Local Road
<i>Parks/Recreation parcels</i>	
<i>Institutional parcels</i>	
<i>Governmental services</i>	
Residential Land	WaterBody Cartographic Feature
Underutilized	Bay, estuary, Puget Sound
Vacant Land	Lake, Pond or Reservoir
Commercial Land	Includes DNR, NWI and Surveyed Wetlands
Underutilized	Fish Habitat Water Type
Vacant Land	Designated Shoreline of the State
Urban Growth Area Boundary	Fish Habitat
Incorporated City Boundary	Non-fish Habitat
Tax Parcel Boundary	Unknown, unmodeled hydrographic feature.

Land Capacity Analysis

This map was created from existing map sources, not from field surveys. While great care was taken in using the most current map sources available, no warranties of any sort, including accuracy, fitness, or merchantability accompany this product. The user of this map assumes responsibility for determining its suitability for its intended use.

*** THIS MAP IS NOT A SUBSTITUTE FOR FIELD SURVEY ***

Vacant and Underutilized parcels created from Land Capacity Analysis were done as part of the Kitsap County Buildable Lands Analysis report. This data represents analysis from parcel data as reflected on January 2, 2012. Continuing permit and development activity will alter the vacant and underutilized parcels results.

DRAFT

Map Date: September, 2013



Kitsap County Department of
Community Development
614 Division Street, MS-36
Port Orchard, Washington 98366
VOICE (360) 337-5777 * FAX (360) 337-4925

