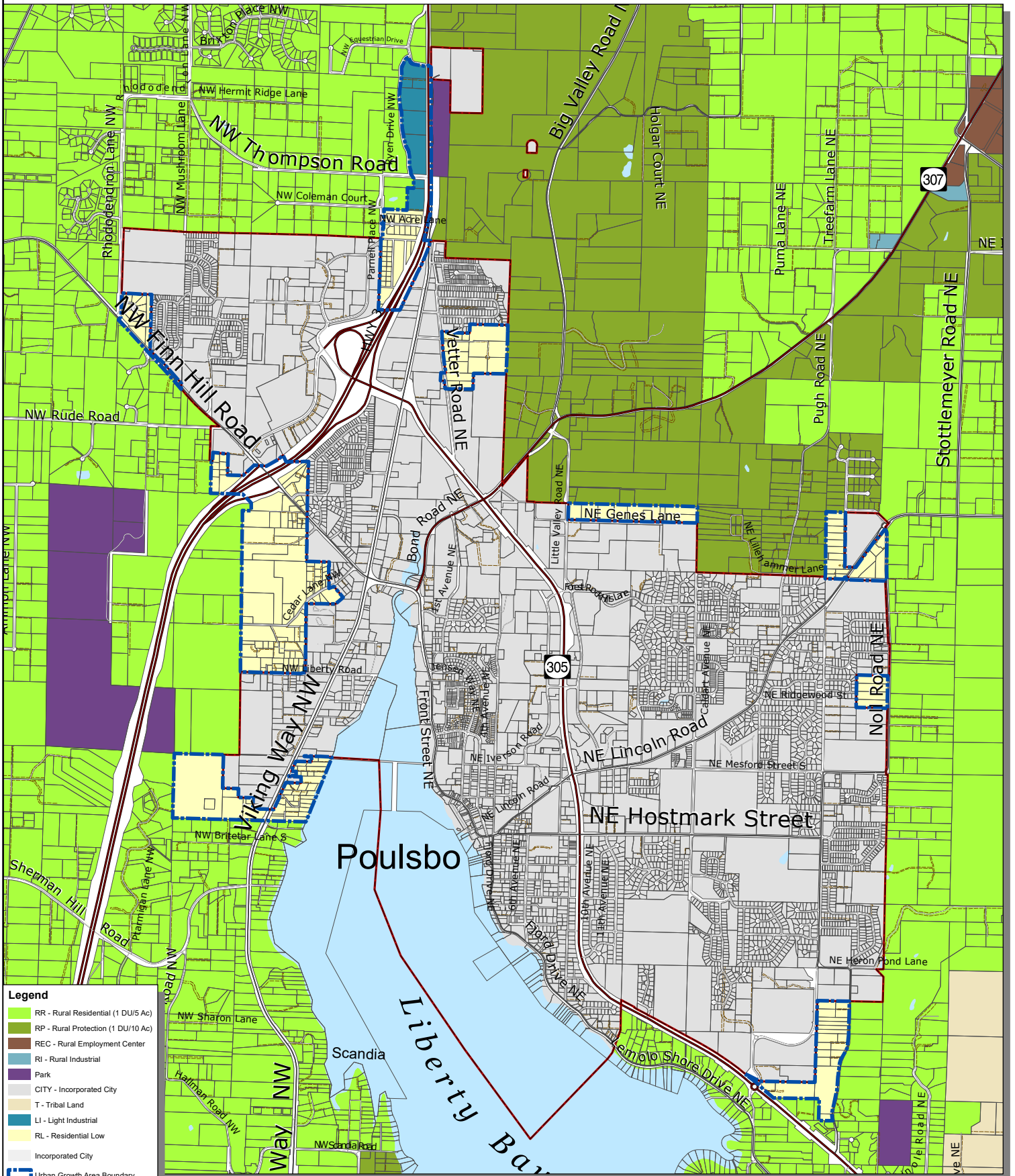


Poulsbo Urban Transition Area

DRAFT



- Legend**
- RR - Rural Residential (1 DU/5 Ac)
 - RP - Rural Protection (1 DU/10 Ac)
 - REC - Rural Employment Center
 - RI - Rural Industrial
 - Park
 - CITY - Incorporated City
 - T - Tribal Land
 - LI - Light Industrial
 - RL - Residential Low
 - Incorporated City
 - Urban Growth Area Boundary
 - Incorporated City Boundary
 - State Highway
 - Collector / Arterial
 - Local Access; Local Road
 - Easement
 - Greater Puget Sound hydrology

Zoning - Alternative 1



FINAL DRAFT

Kitsap County Department of Community Development
 614 Division Street, MS-36, Port Orchard, Washington 98366
 VOICE (360) 337-5777 (Kitsap One) * <https://www.kitsapgov.com/>

This map was created from existing map sources, not from field surveys. Determination of fitness for use lies with the user, as does the responsibility for understanding the accuracy and limitations of this map and data.

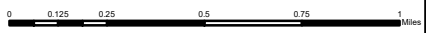
The information on this map may have been collected from various sources and can change over time without notice.

While great care was taken in making this map, there is no guarantee or warranty of its accuracy as to labeling, placement or location of any geographic features present. This map is intended for informational purposes only and is not a substitute for a field survey.

Kitsap County and its officials and employees assume no responsibility or legal liability for the accuracy, completeness, reliability, or timeliness of any information on this map.

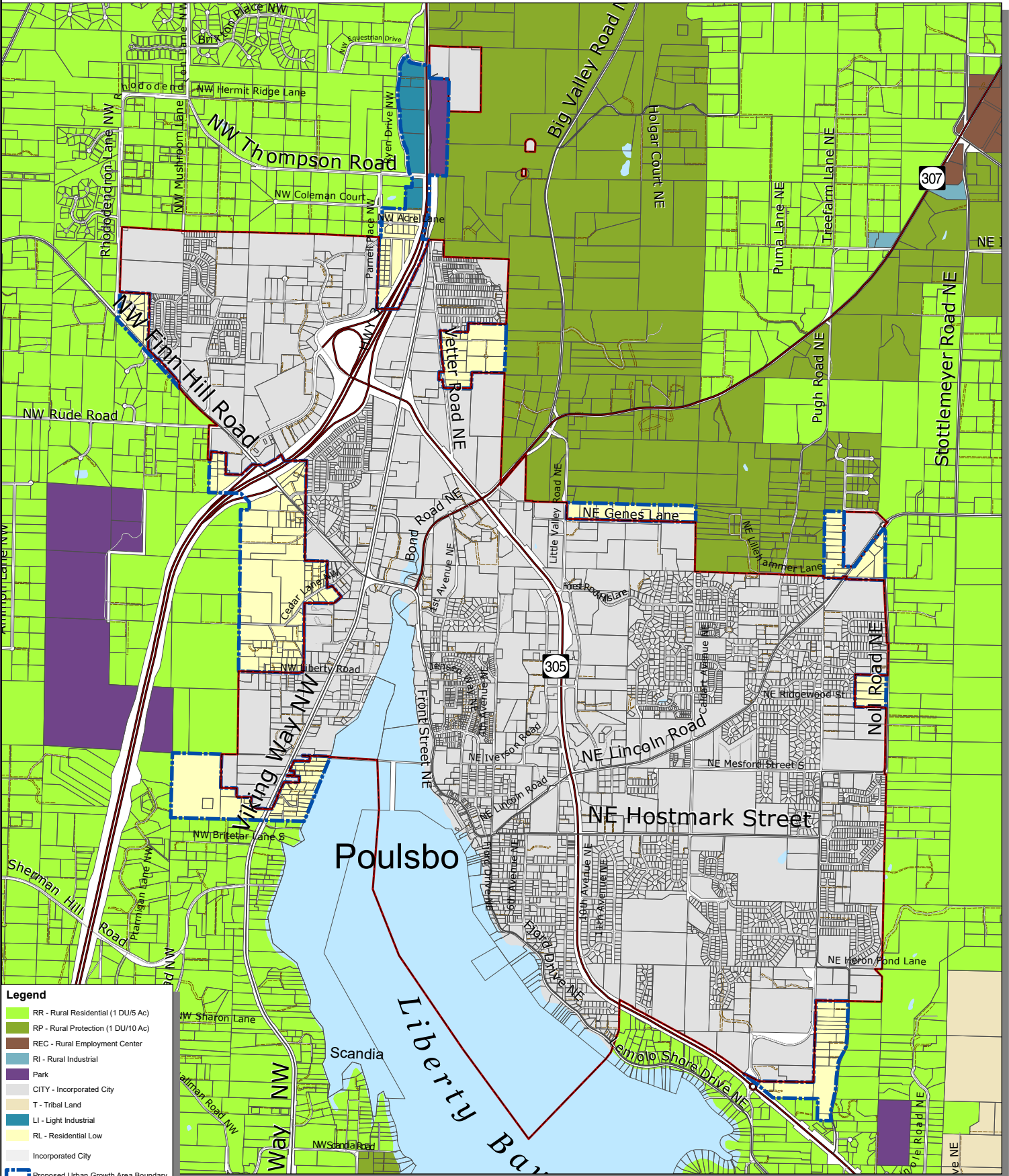
Ord. No. 812-2022 Comprehensive Plan Amendment

Map Published Date: April 26, 2023



Poulsbo Urban Transition Area

DRAFT



Legend

- RR - Rural Residential (1 DU/5 Ac)
- RP - Rural Protection (1 DU/10 Ac)
- REC - Rural Employment Center
- RI - Rural Industrial
- Park
- CITY - Incorporated City
- T - Tribal Land
- LI - Light Industrial
- RL - Residential Low
- Incorporated City
- Proposed Urban Growth Area Boundary
- Incorporated City Boundary
- State Highway
- Collector / Arterial
- Local Access; Local Road
- Easement
- Greater Puget Sound hydrology



Kitsap County Department of Community Development
 614 Division Street, MS-36, Port Orchard, Washington 98366
 VOICE (360) 337-5777 (Kitsap One) * <https://www.kitsapgov.com/>

FINAL DRAFT

This map was created from existing map sources, not from field surveys. Determination of fitness for use lies with the user, as does the responsibility for understanding the accuracy and limitations of this map and data.

The information on this map may have been collected from various sources and can change over time without notice.

While great care was taken in making this map, there is no guarantee or warranty of its accuracy as to labeling, placement, or location of any geographic features present. This map is intended for informational purposes only and is not a substitute for a field survey.

Kitsap County and its officials and employees assume no responsibility or legal liability for the accuracy, completeness, reliability, or timeliness of any information on this map.

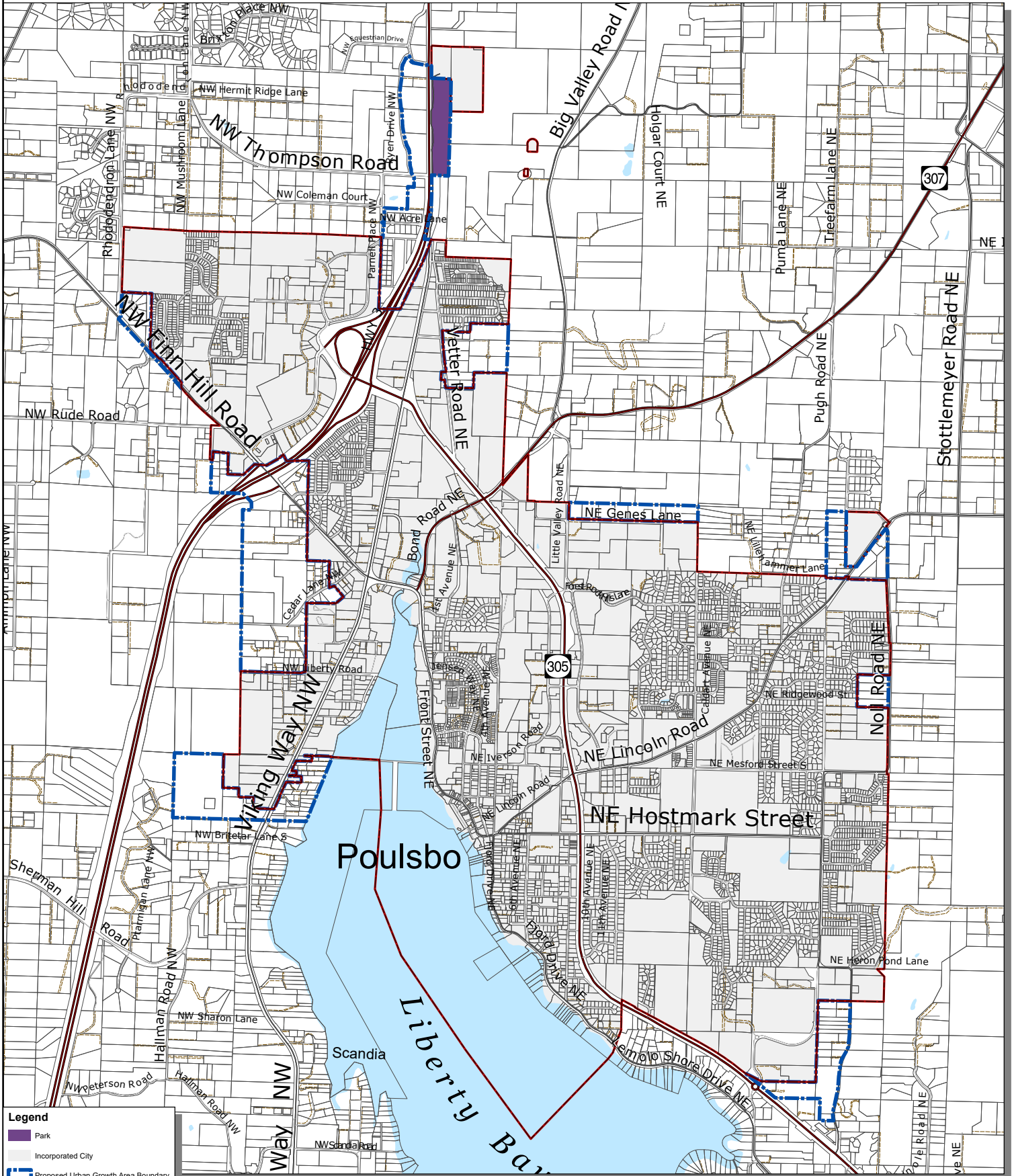
Ord. No. 812-2022 Comprehensive Plan Amendment

Map Published Date: April 26, 2023



Poulsbo Urban Transition Area

DRAFT



Zoning Changes - Alternative 2

Legend

- Park
- Incorporated City
- Proposed Urban Growth Area Boundary
- Incorporated City Boundary
- State Highway
- Collector / Arterial
- Local Access; Local Road
- Easement
- Greater Puget Sound hydrology



FINAL DRAFT

Kitsap County Department of Community Development
 614 Division Street, MS-36, Port Orchard, Washington 98366
 VOICE (360) 337-5777 (Kitsap One) * <https://www.kitsapgov.com/>

This map was created from existing map sources, not from field surveys. Determination of fitness for use lies with the user, as does the responsibility for understanding the accuracy and limitations of this map and data.

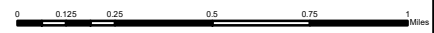
The information on this map may have been collected from various sources and can change over time without notice.

While great care was taken in making this map, there is no guarantee or warranty of its accuracy as to labeling, placement or location of any geographic features present. This map is intended for informational purposes only and is not a substitute for a field survey.

Kitsap County and its officials and employees assume no responsibility or legal liability for the accuracy, completeness, reliability, or timeliness of any information on this map.

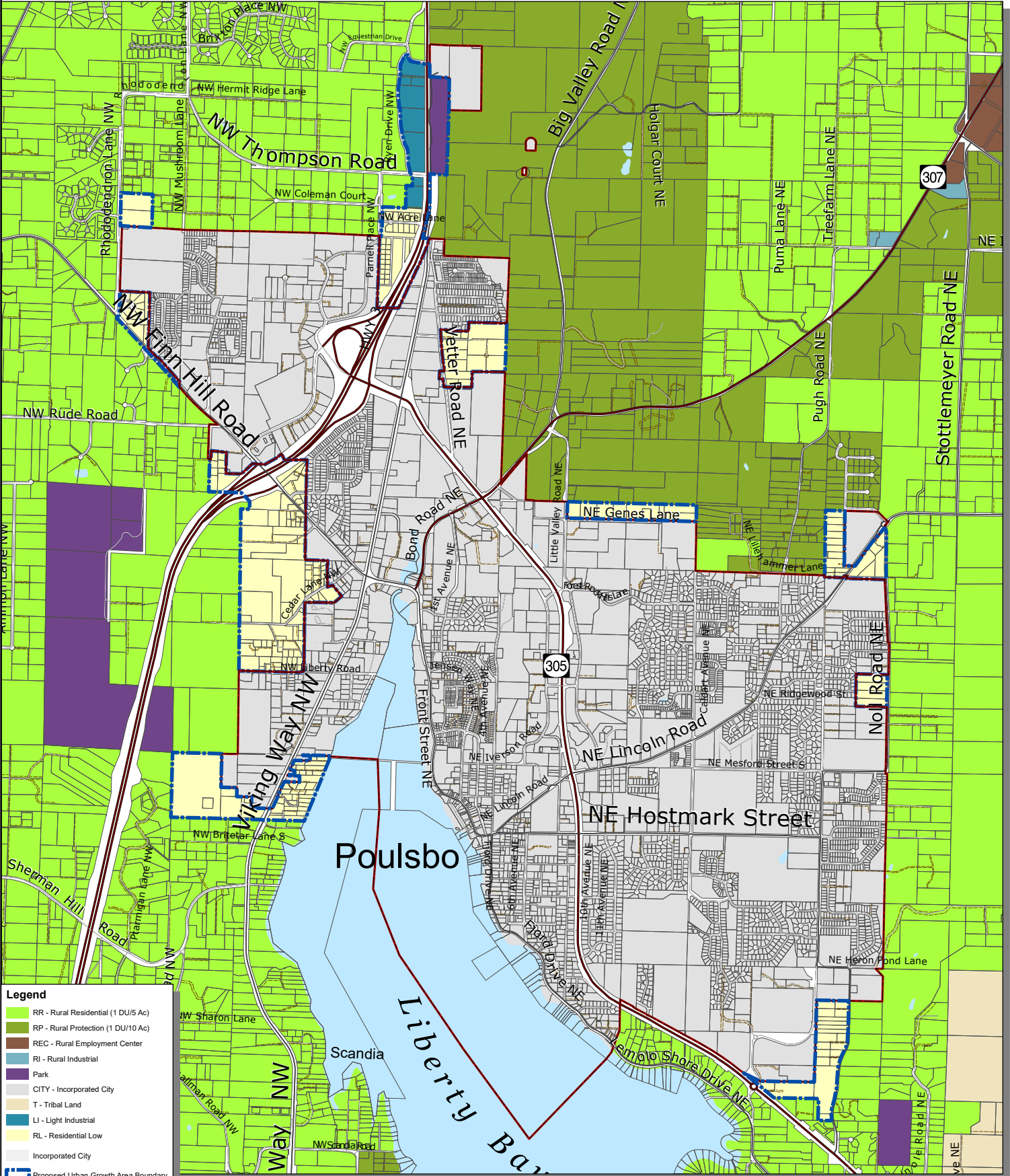
Ord. No. 112-2022 Comprehensive Plan Amendment

Map Published Date: April 26, 2023



Poulsbo Urban Transition Area

DRAFT



Legend

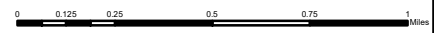
- RR - Rural Residential (1 DU/5 Ac)
- RP - Rural Protection (1 DU/10 Ac)
- REC - Rural Employment Center
- RI - Rural Industrial
- Park
- CITY - Incorporated City
- T - Tribal Land
- LI - Light Industrial
- RL - Residential Low
- Incorporated City
- Proposed Urban Growth Area Boundary
- Incorporated City Boundary
- State Highway
- Collector / Arterial
- Local Access; Local Road
- Easement
- Greater Puget Sound hydrology



Kitsap County Department of Community Development
 614 Division Street, MS-36, Port Orchard, Washington 98366
 VOICE (360) 337-5777 (Kitsap One) * <https://www.kitsapgov.com/>

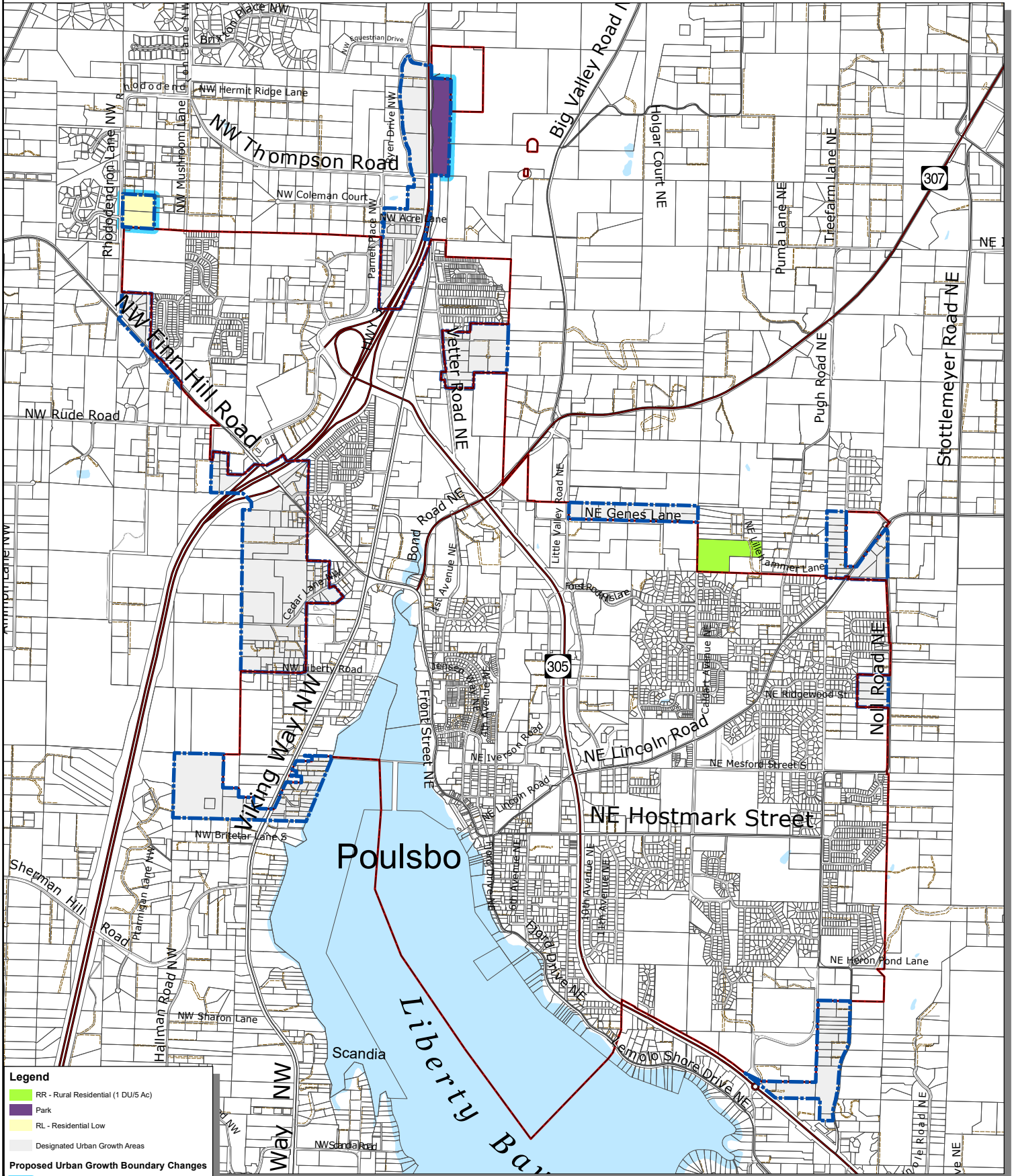
FINAL DRAFT

This map was created from existing map sources, not from field surveys. Determination of fitness for use lies with the user, as does the responsibility for understanding the accuracy and limitations of this map and data.
 The information on this map may have been collected from various sources and can change over time without notice.
 While great care was taken in making this map, there is no guarantee or warranty of its accuracy as to labeling, placement, or location of any geographic features present. This map is intended for informational purposes only and is not a substitute for a field survey.
 Kitsap County and its officials and employees assume no responsibility or legal liability for the accuracy, completeness, reliability, or timeliness of any information on this map.
 Ord. No. 112-2022 Comprehensive Plan Amendment
 Map Published Date: April 26, 2023



Poulsbo Urban Transition Lane Area

DRAFT



Legend

- RR - Rural Residential (1 DU/5 Ac)
- Park
- RL - Residential Low
- Designated Urban Growth Areas

Proposed Urban Growth Boundary Changes

- Expansion
- State Highway
- Collector / Arterial
- Local Access; Local Road
- Easement
- Greater Puget Sound hydrology

Zoning Changes - Alternative 3



FINAL DRAFT

Kitsap County Department of Community Development
 614 Division Street, MS-36, Port Orchard, Washington 98366
 VOICE (360) 337-5777 (Kitsap One) * <https://www.kitsapgov.com/>

This map was created from existing map sources, not from field surveys. Determination of fitness for use lies with the user, as does the responsibility for understanding the accuracy and limitations of this map and data.

The information on this map may have been collected from various sources and can change over time without notice.

While great care was taken in making this map, there is no guarantee or warranty of its accuracy as to labeling, placement or location of any geographic features present. This map is intended for informational purposes only and is not a substitute for a field survey.

Kitsap County and its officials and employees assume no responsibility or legal liability for the accuracy, completeness, reliability, or timeliness of any information on this map.

Ord. No. 112-2022 Comprehensive Plan Amendment
 Map Published Date: April 26, 2023

