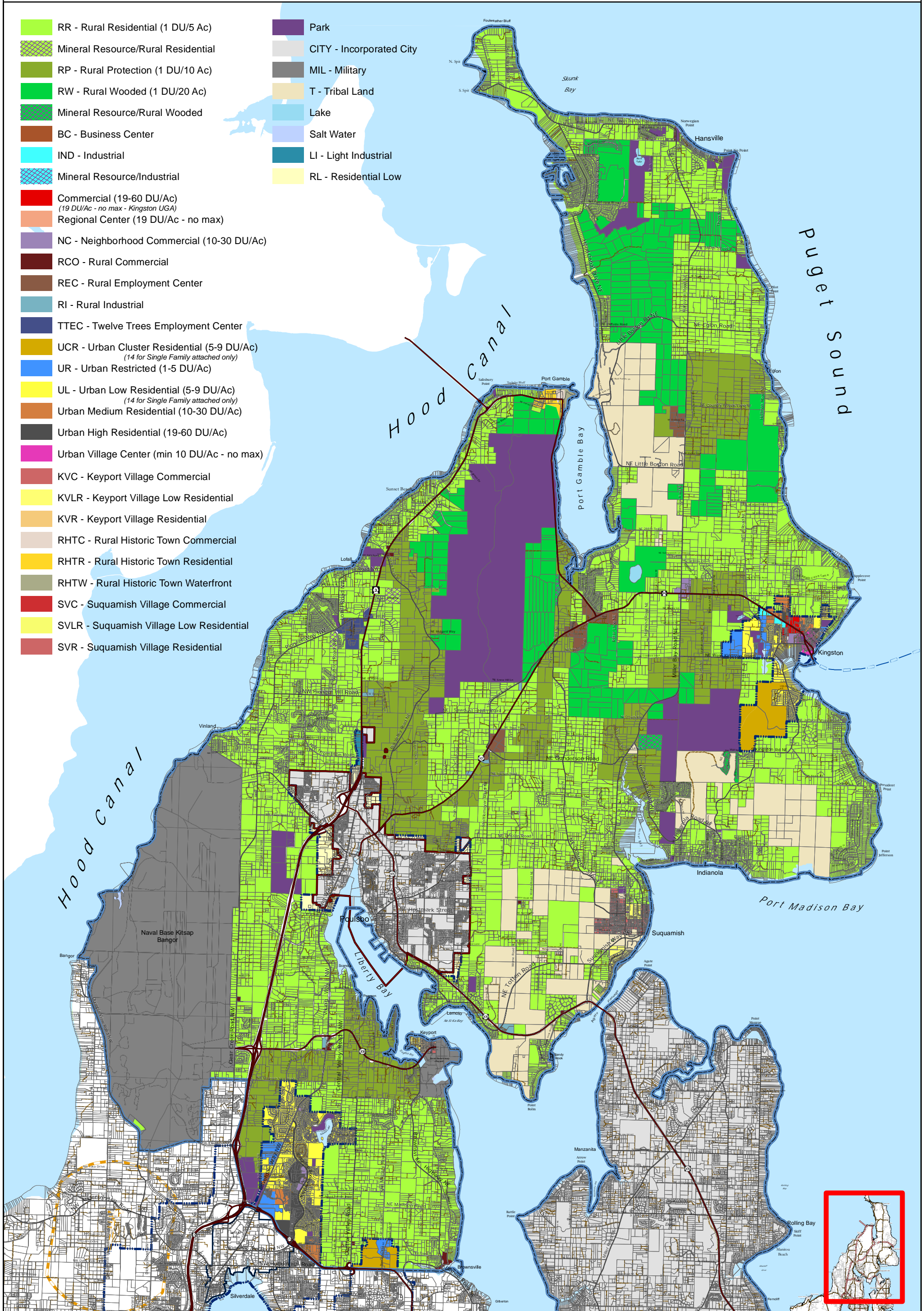


North Kitsap - Commissioner District 1

DRAFT

- RR - Rural Residential (1 DU/5 Ac)
- Mineral Resource/Rural Residential
- RP - Rural Protection (1 DU/10 Ac)
- RW - Rural Wooded (1 DU/20 Ac)
- Mineral Resource/Rural Wooded
- BC - Business Center
- IND - Industrial
- Mineral Resource/Industrial
- Commercial (19-60 DU/Ac)
(19 DU/Ac - no max - Kingston UGA)
- Regional Center (19 DU/Ac - no max)
- NC - Neighborhood Commercial (10-30 DU/Ac)
- RCO - Rural Commercial
- REC - Rural Employment Center
- RI - Rural Industrial
- TTEC - Twelve Trees Employment Center
- UCR - Urban Cluster Residential (5-9 DU/Ac)
(14 for Single Family attached only)
- UR - Urban Restricted (1-5 DU/Ac)
- UL - Urban Low Residential (5-9 DU/Ac)
(14 for Single Family attached only)
- Urban Medium Residential (10-30 DU/Ac)
- Urban High Residential (19-60 DU/Ac)
- Urban Village Center (min 10 DU/Ac - no max)
- KVC - Keyport Village Commercial
- KVLR - Keyport Village Low Residential
- KVR - Keyport Village Residential
- RHTC - Rural Historic Town Commercial
- RHTR - Rural Historic Town Residential
- RHTW - Rural Historic Town Waterfront
- SVC - Suquamish Village Commercial
- SVLR - Suquamish Village Low Residential
- SVR - Suquamish Village Residential

ParkCITY - Incorporated CityMIL - MilitaryT - Tribal LandLakeSalt WaterLI - Light IndustrialRL - Residential Low

Zoning - Preferred Alternative
Board of Commissioner Direction

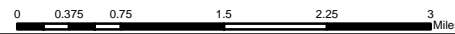
This map was created from existing map sources, not from field surveys. Determination of fitness for use lies with the user, as does the responsibility for understanding the accuracy and limitations of this map and data.

The information on this map may have been collected from various sources and can change over time without notice.

While great care was taken in making this map, there is no guarantee or warranty of its accuracy as to labeling, placement or location of any geographic features present. This map is intended for informational purposes only and is not a substitute for a field survey.

Kitsap County and its officials and employees assume no responsibility or legal liability for the accuracy, completeness, reliability, or timeliness of any information on this map.

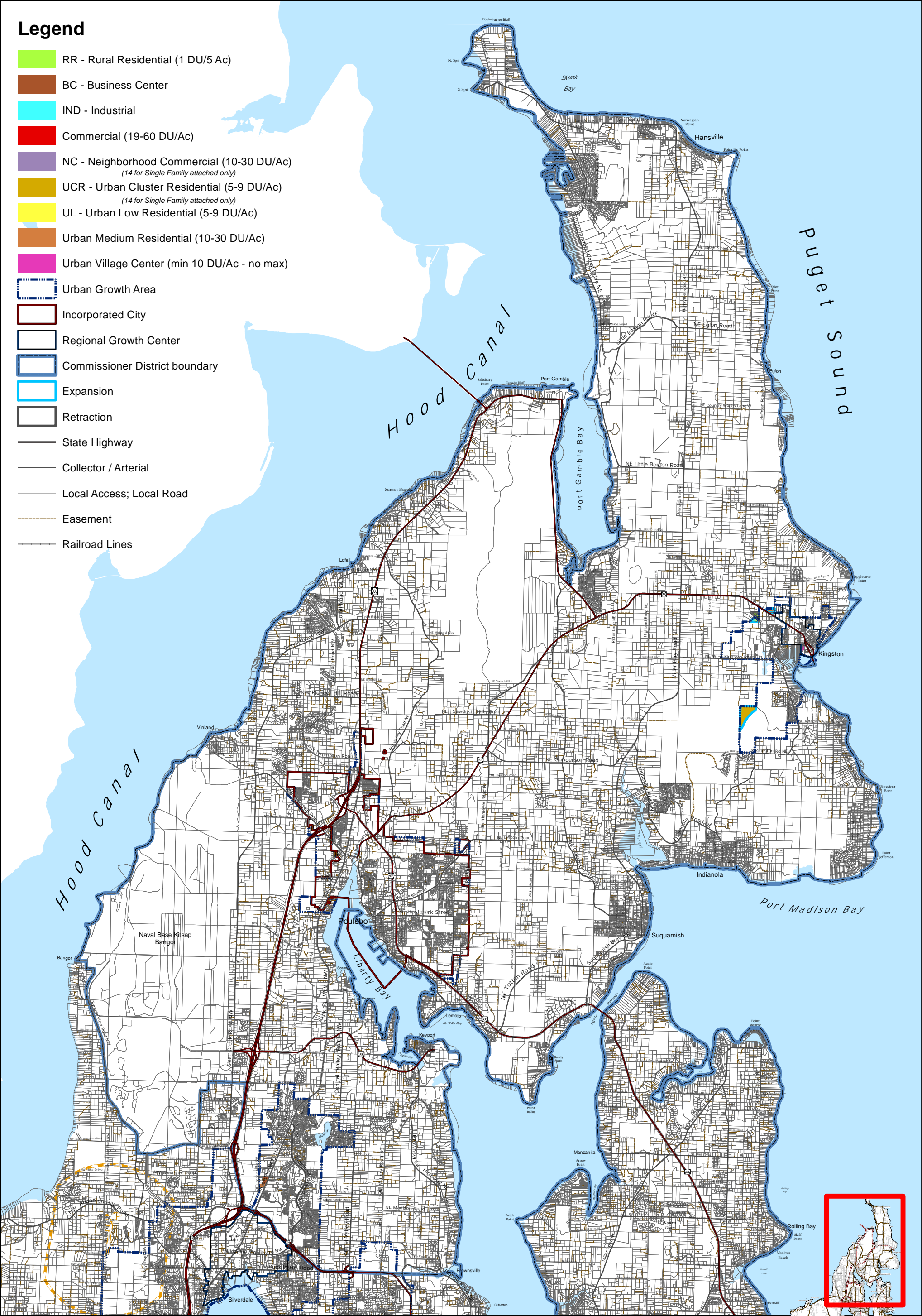
Map Published Date: April 22, 2024



Kitsap County Department of Community Development
614 Division Street, MS-36, Port Orchard, Washington 98366
VOICE (360) 337-5777 (Kitsap One) * <https://www.kitsapgov.com/>

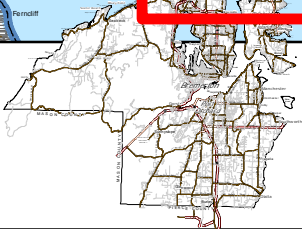
Legend

- RR - Rural Residential (1 DU/5 Ac)
- BC - Business Center
- IND - Industrial
- Commercial (19-60 DU/Ac)
- NC - Neighborhood Commercial (10-30 DU/Ac)
(14 for Single Family attached only)
- UCR - Urban Cluster Residential (5-9 DU/Ac)
(14 for Single Family attached only)
- UL - Urban Low Residential (5-9 DU/Ac)
- Urban Medium Residential (10-30 DU/Ac)
- Urban Village Center (min 10 DU/Ac - no max)
- Urban Growth Area
- Incorporated City
- Regional Growth Center
- Commissioner District boundary
- Expansion
- Retraction
- State Highway
- Collector / Arterial
- Local Access; Local Road
- Easement
- Railroad Lines



Zoning - Alternative Changes
Board of Commissioner Direction

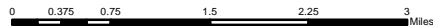
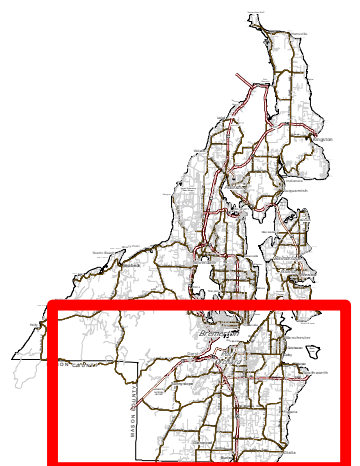
This map was created from existing map sources, not from field surveys. Determination of fitness for use lies with the user, as does the responsibility for understanding the accuracy and limitations of this map and data.
The information on this map may have been collected from various sources and can change over time without notice.
While great care was taken in making this map, there is no guarantee or warranty of its accuracy as to labeling, placement or location of any geographic features present. This map is intended for informational purposes only and is not a substitute for a field survey.
Kitsap County and its officials and employees assume no responsibility or legal liability for the accuracy, completeness, reliability, or timeliness of any information on this map.
Map Published Date: April 22, 2024



0 0.375 0.75 1.5 2.25 3 Miles

Kitsap County Department of Community Development
614 Division Street, MS-36, Port Orchard, Washington 98366
VOICE (360) 337-5777 (Kitsap One) * <https://www.kitsapgov.com/>

DRAFT



This map was created from existing map sources, not from field surveys. Determination of fitness for use lies with the user, as does the responsibility for understanding the accuracy and limitations of this map and data.

The information on this map may have been collected from various sources and can change over time without notice.

While great care was taken in making this map, there is no guarantee or warranty of its accuracy as to labeling, placement or location of any geographic features present. This map is intended for informational purposes only and is not a substitute for a field survey.

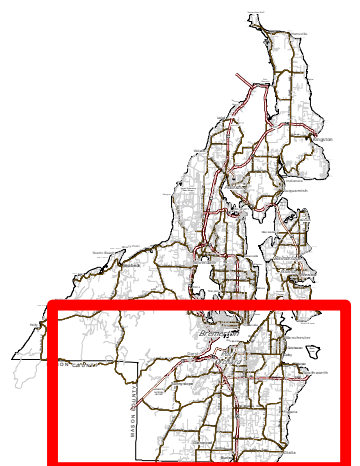
Kitsap County and its officials and employees assume no responsibility or legal liability for the accuracy, completeness, reliability, or timeliness of any information on this map.

Map Published Date: April 22, 2024



Kitsap County Department of Community Development
614 Division Street, MS-36, Port Orchard, Washington 98366
VOICE (360) 337-5777 (Kitsap One) * <https://www.kitsapgov.com/>

DRAFT



Kitsap County Department of Community Development
614 Division Street, MS-36, Port Orchard, Washington 98366
VOICE (360) 337-5777 (Kitsap One) * <https://www.kitsapgov.com/>

Map Published Date: April 22, 2024



Central Kitsap - Commissioner District 3

DRAFT

- RR - Rural Residential (1 DU/5 Ac)

Mineral Resource/Rural Residential

RP - Rural Protection (1 DU/10 Ac)

Mineral Resource/Rural Protection

RW - Rural Wooded (1 DU/20 Ac)

Mineral Resource/Rural Wooded

FRL - Forest Resource Lands (1 DU/40 Ac)

Mineral Resource/Forest Resource Lands

BC - Business Center

IND - Industrial

Mineral Resource/Industrial

Commercial (19-60 DU/Ac)

Regional Center (19 DU/Ac - no max)

NC - Neighborhood Commercial (10-30 DU/Ac)

Low Intensity Commercial (10-30 DU/Ac)

RCO - Rural Commercial

RI - Rural Industrial

Greenbelt (1-4 DU/Ac)

UCR - Urban Cluster Residential (5-9 DU/Ac)

UR - Urban Restricted (1-5 DU/Ac)

UL - Urban Low Residential (5-9 DU/Ac)
(14 for Single Family attached only)

Urban Medium Residential (10-30 DU/Ac)

Urban High Residential (19-60 DU/Ac)
- KVC - Keyport Village Commercial

KVLR - Keyport Village Low Residential

KVR - Keyport Village Residential

MVC - Manchester Village Commercial

MVLR - Manchester Village Low Residential

MVR - Manchester Village Residential

SVLR - Suquamish Village Low Residential

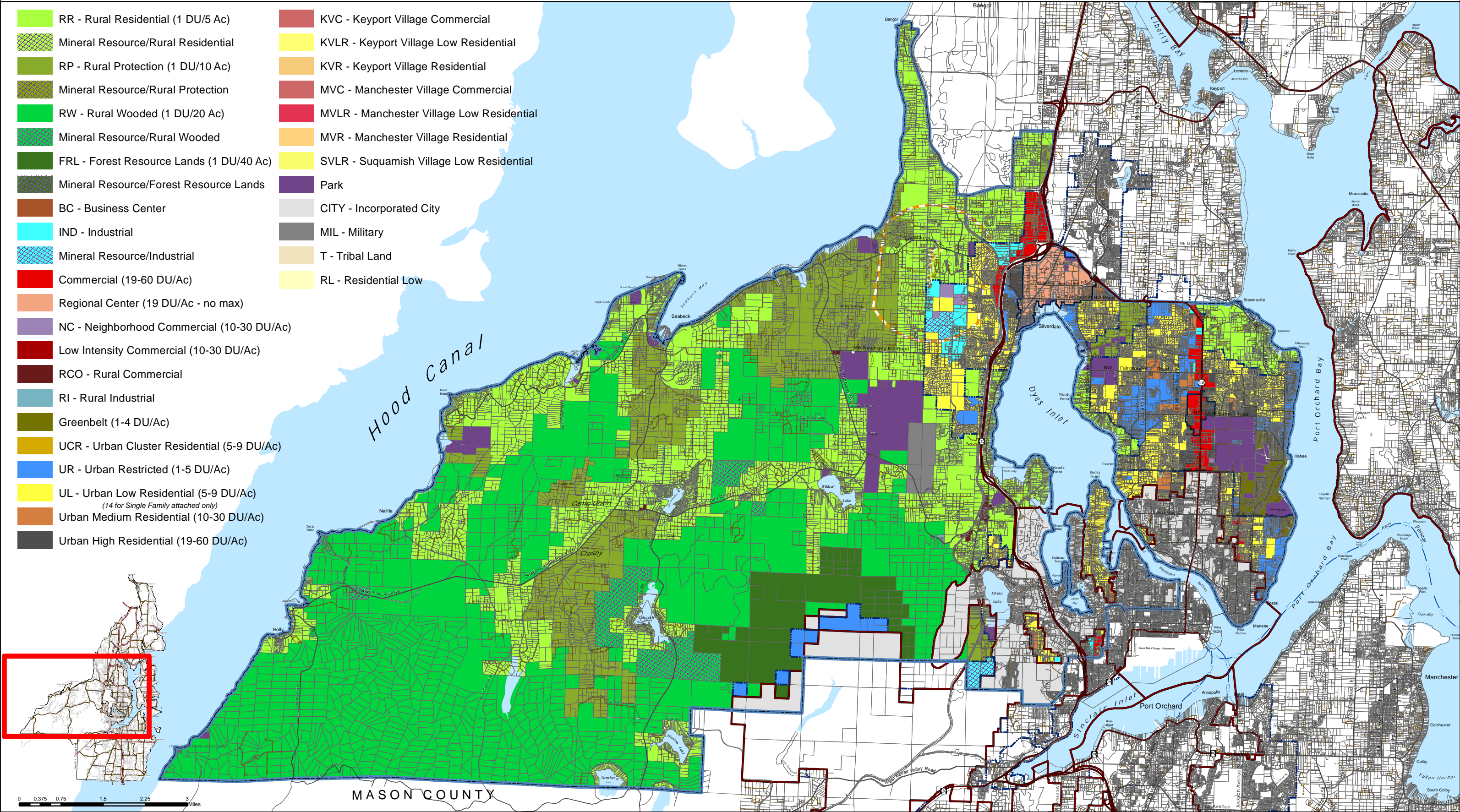
Park

CITY - Incorporated City

MIL - Military

T - Tribal Land

RL - Residential Low



Zoning - Preferred Alternative – Board of Commissioner Direction

Kitsap County Department of Community Development
614 Division Street, MS-36, Port Orchard, Washington 98366
VOICE (360) 337-5777 (Kitsap One) * <https://www.kitsapgov.com/>

This map was created from existing map sources, not from field surveys. Determination of fitness for use lies with the user, as does the responsibility for understanding the accuracy and limitations of this map and data.

The information on this map may have been collected from various sources and can change over time without notice.

While great care was taken in making this map, there is no guarantee or warranty of its accuracy as to labeling, placement or location of any geographic features present. This map is intended for informational purposes only and is not a substitute for a field survey.

Kitsap County and its officials and employees assume no responsibility or legal liability for the accuracy, completeness, reliability, or timeliness of any information on this map.

Map Published Date: April 22, 2024

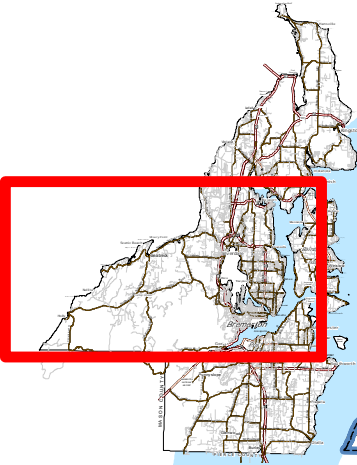


Central Kitsap - Commissioner District 3

DRAFT

Legend

- RP - Rural Protection (1 DU/10 Ac)
- BC - Business Center
- IND - Industrial
- Mineral Resource/Industrial
- Commercial (19-60 DU/Ac)
- NC - Neighborhood Commercial (10-30 DU/Ac)
- UR - Urban Restricted (1-5 DU/Ac)
- UL - Urban Low Residential (5-9 DU/Ac)
(14 for Single Family attached only)
- Urban Medium Residential (10-30 DU/Ac)
- Park
- Urban Growth Area
- Incorporated City
- Regional Growth Center
- Expansion
- Commissioner_District
- Airport Overlay
- Tax Parcels
- State Highway
- Collector / Arterial
- Local Access; Local Road
- Railroad Lines
- Easement
- Ferry Routes



0 0.375 0.75 1.5 2.25 3 Miles

MASON COUNTY

Zoning - Alternative Changes – Board of Commissioner Direction

Kitsap County Department of Community Development
614 Division Street, MS-36, Port Orchard, Washington 98366
VOICE (360) 337-5777 (Kitsap One) * <https://www.kitsapgov.com/>

This map was created from existing map sources, not from field surveys. Determination of fitness for use lies with the user, as does the responsibility for understanding the accuracy and limitations of this map and data.

The information on this map may have been collected from various sources and can change over time without notice.

While great care was taken in making this map, there is no guarantee or warranty of its accuracy as to labeling, placement or location of any geographic features present. This map is intended for informational purposes only and is not a substitute for a field survey.

Kitsap County and its officials and employees assume no responsibility or legal liability for the accuracy, completeness, reliability, or timeliness of any information on this map.

Map Published Date: April 22, 2024

