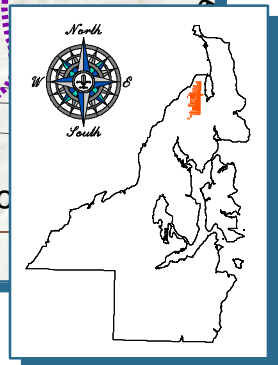
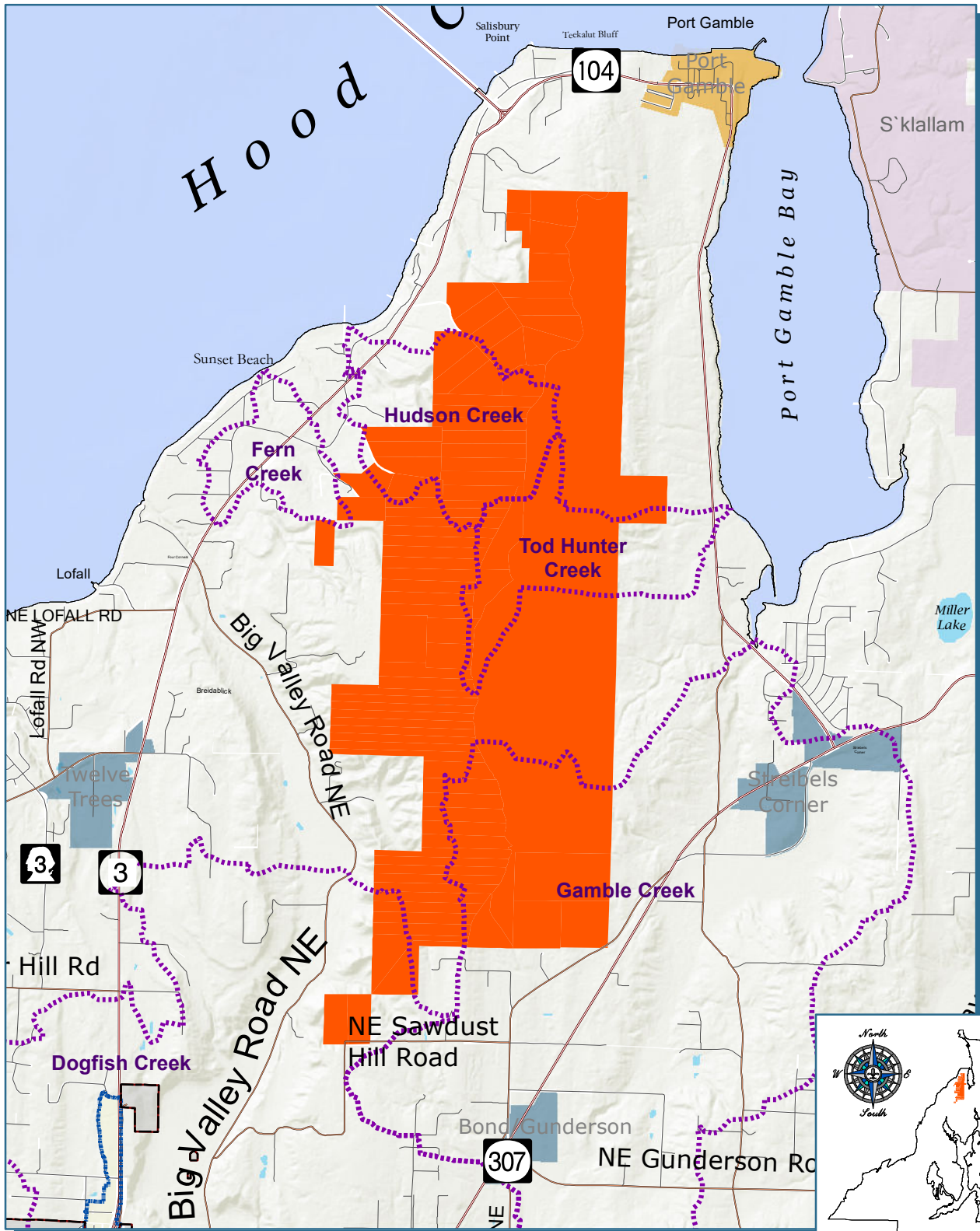




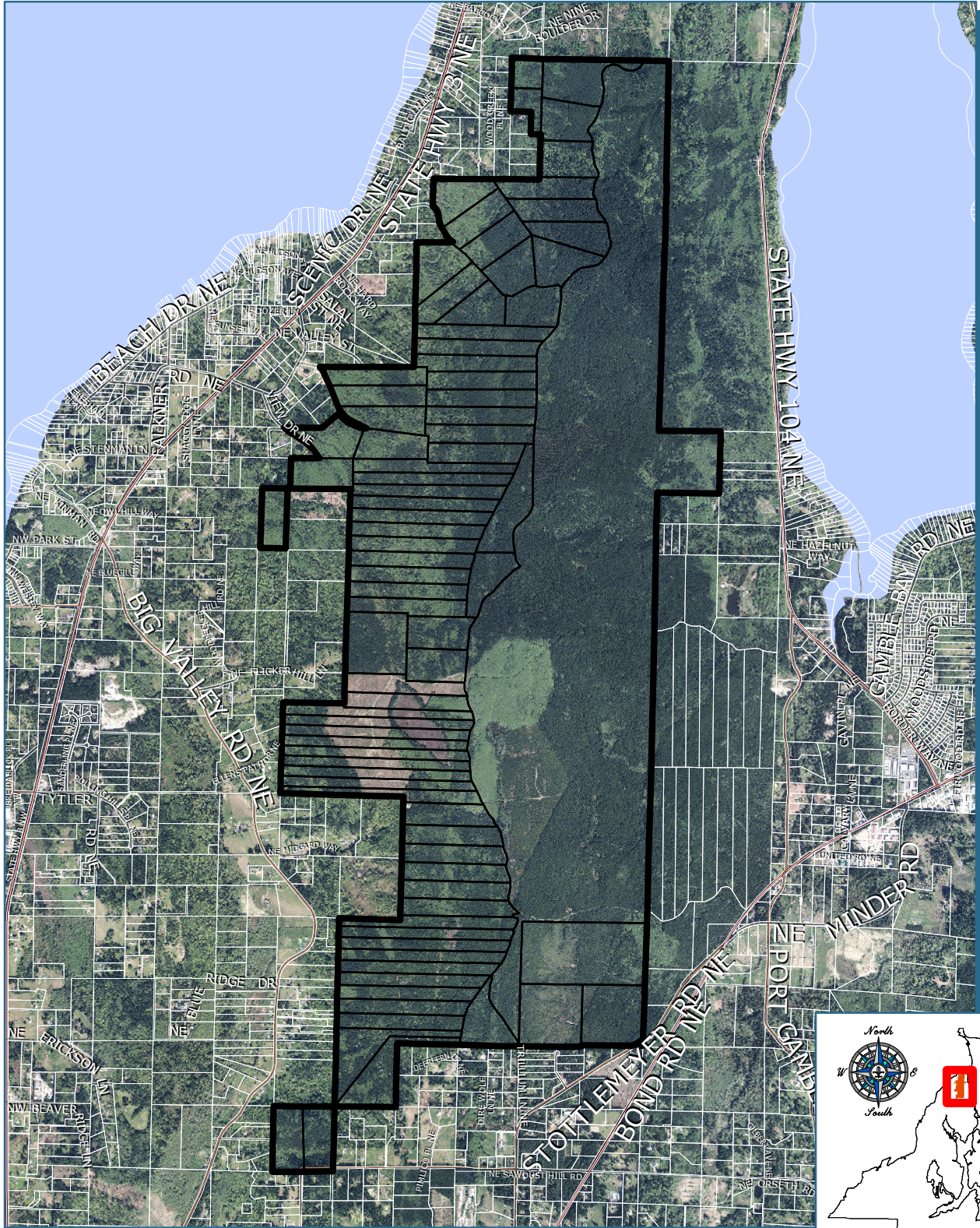
Map 1 - Vicinity

Public Facility Designation and Parks Classification Update



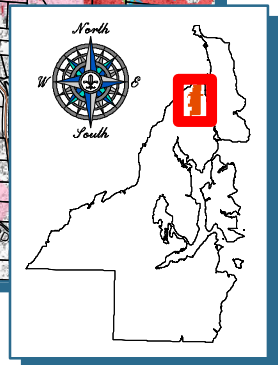
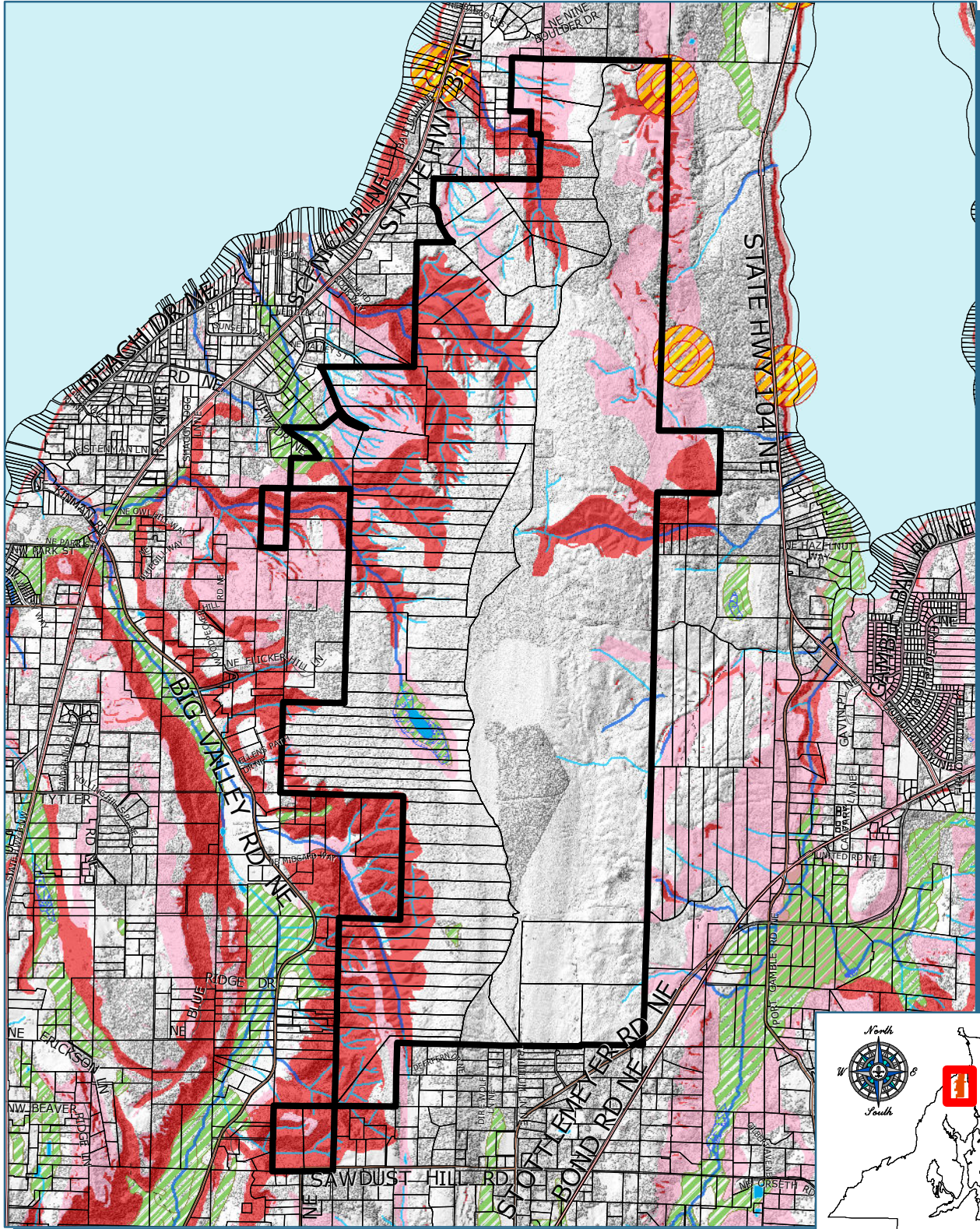


Map 2 - Aerial Photo (2015) Public Facility Designation and Parks Classification Update



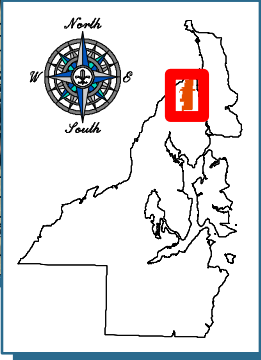
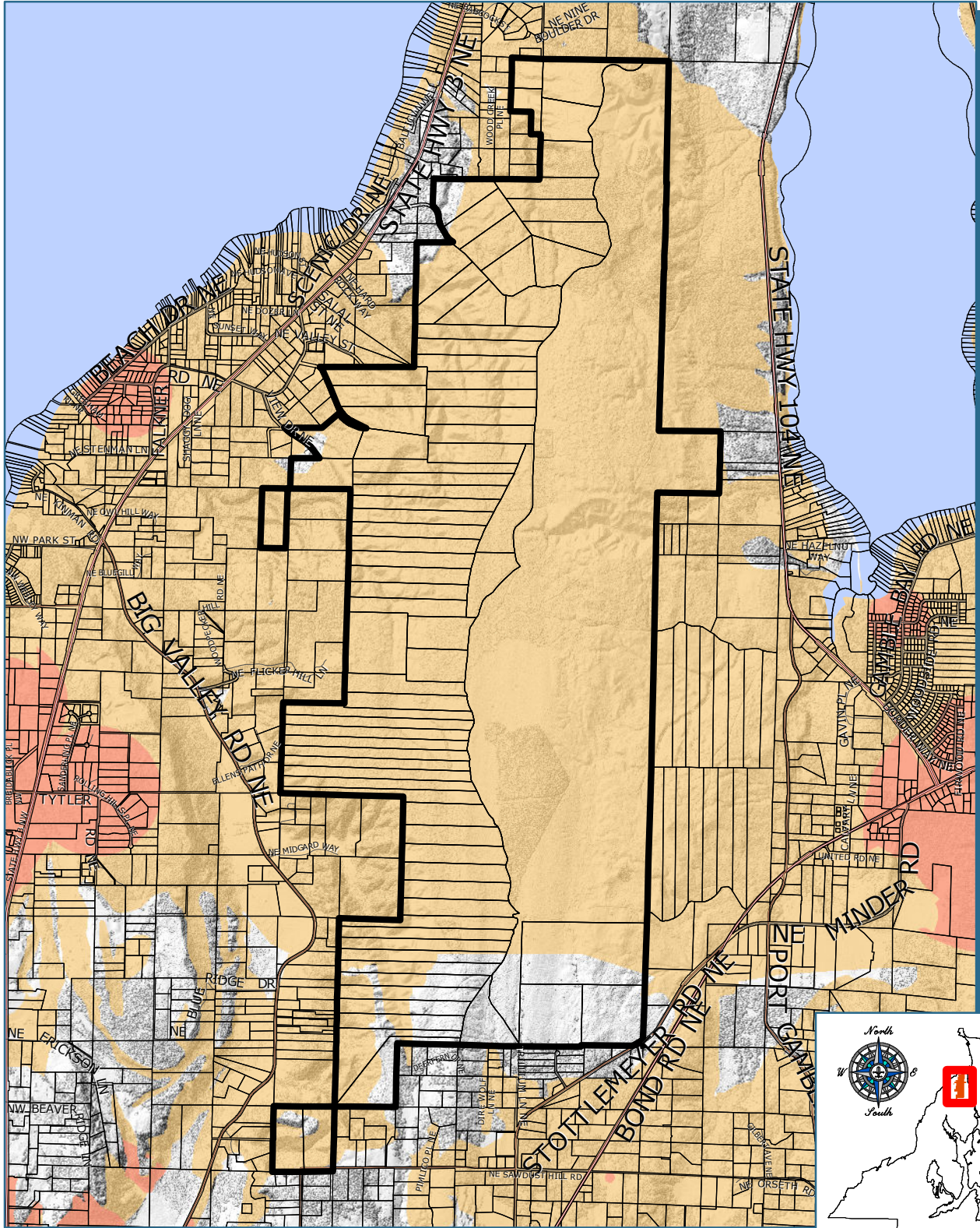


Map 3A - Critical Areas Public Facility Designation and Parks Classification Update



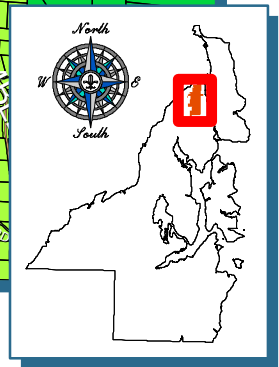
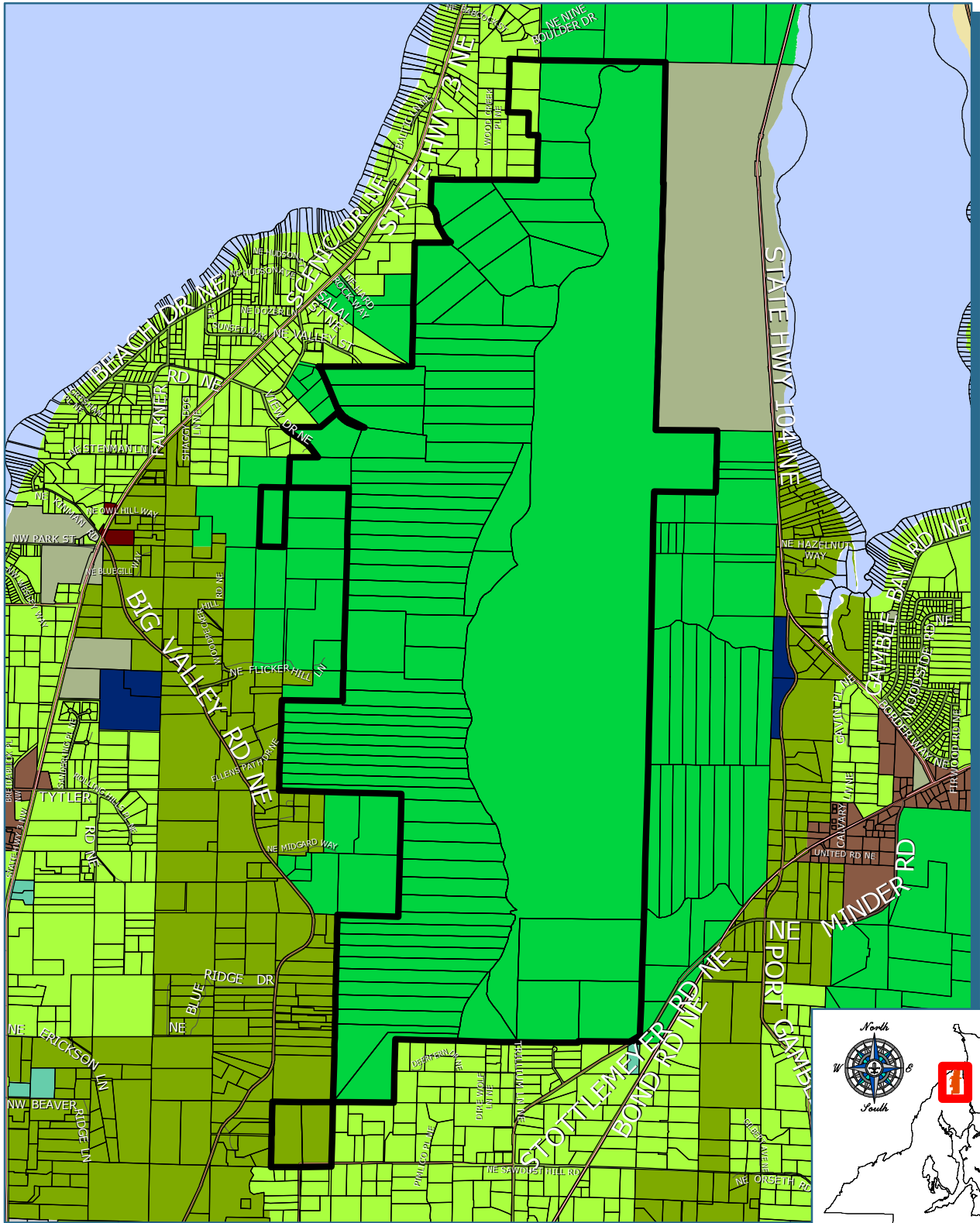


Map 3B - Critical Aquifer Recharge Areas Public Facility Designation and Parks Classification Update



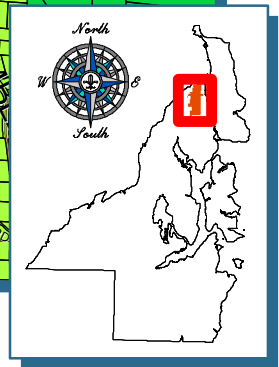
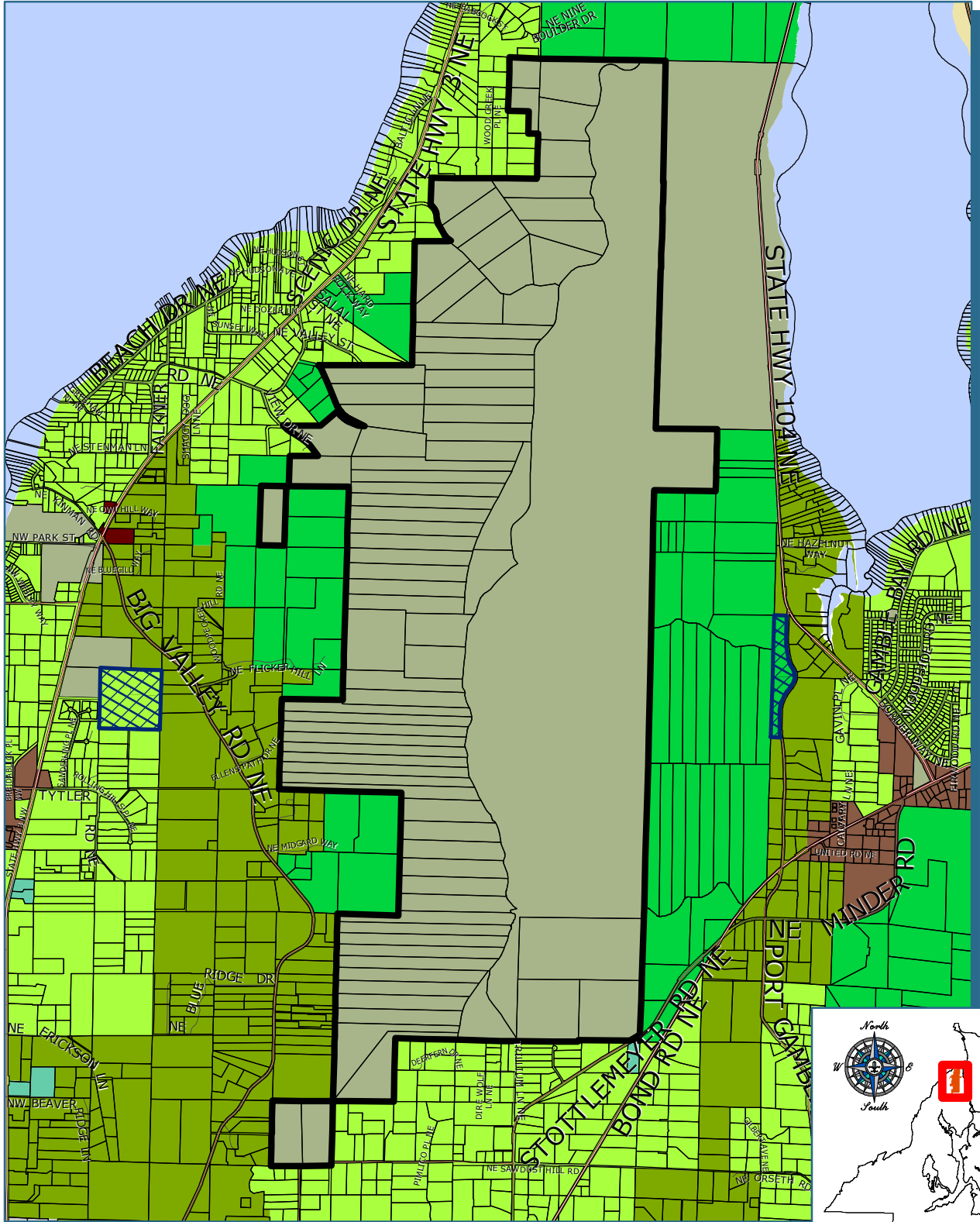


Map 4A - Current Land Use Designation Map Public Facility Designation and Parks Classification Update





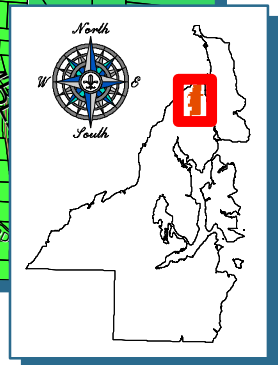
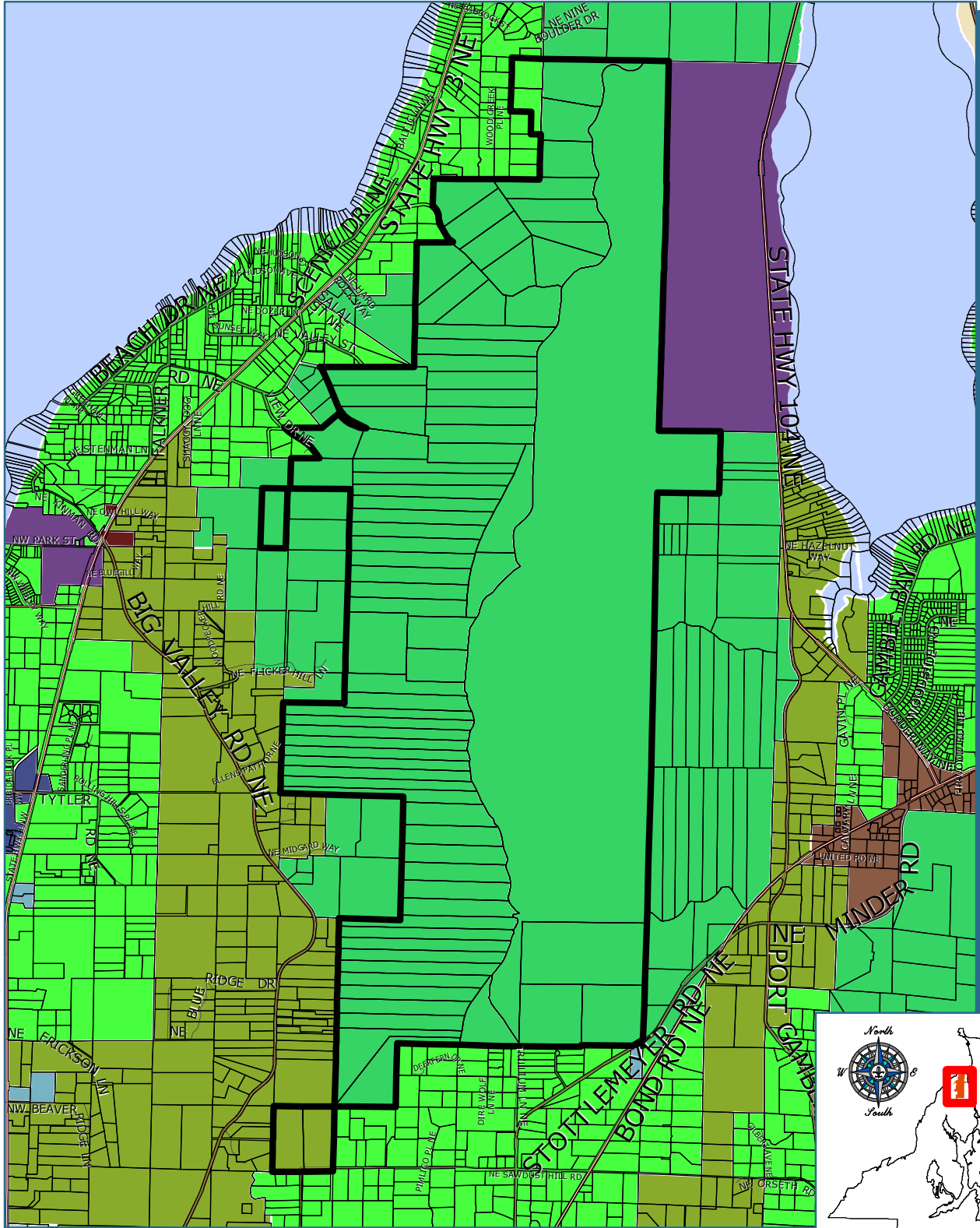
Map 4B - Proposed Land Use Designation Map Public Facility Designation and Parks Classification Update





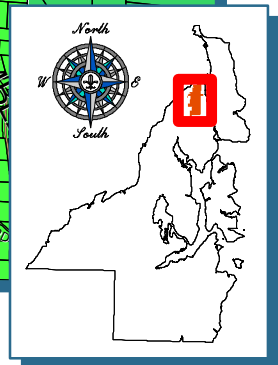
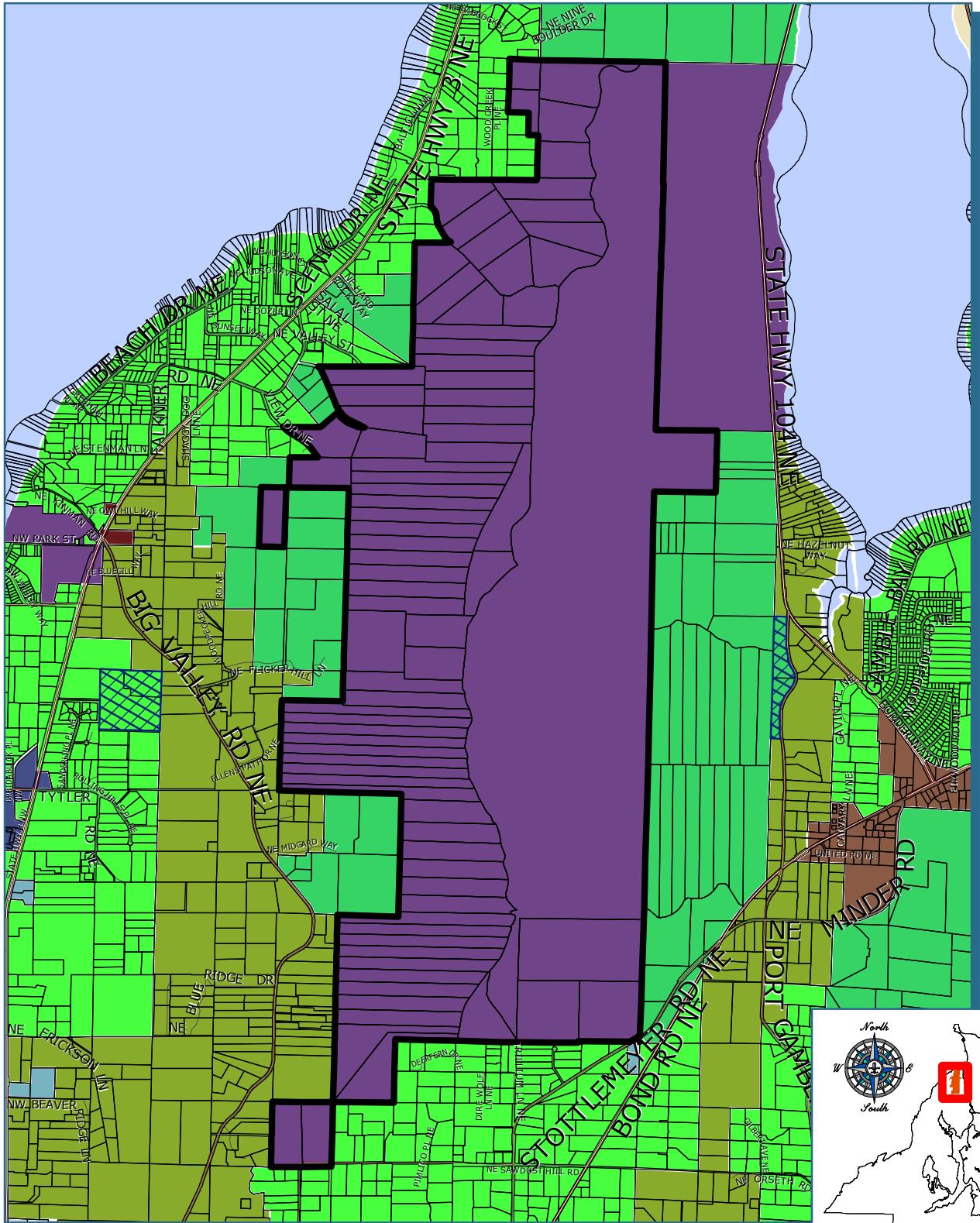
Map 5A - Current Zoning Classification Map

Public Facility Designation and Parks Classification Update




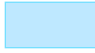




Map 5B - Proposed Zoning Classification Map Public Facility Designation and Parks Classification Update




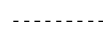
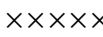


Legend for Maps 1 - 3

Waterbodies (defined in WAC 222-16-030)

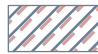

-  Greater Puget Sound Hydrology
-  Bay or estuary
-  Lake, Pond, Reservoir, Gravel pit or quarry filled with water
-  Marsh, wetland, swamp, bog

Fish Habitat Water Type Code



-  (S) Designated Shoreline of the State
-  (F) Fish Habitat
-  (N) Non-fish Habitat
-  (U) Unknown, unmodeled hydrographic feature
-  No Channel found

-  Potential Wetlands



FEMA Flood Hazard Zone

-  High Risk - Coastal Area Zones
-  High Risk Areas Zones



Geohazards



-  High Hazard Area
-  Moderate Hazard Area

Critical Aquifer Recharge Areas

-  Category I
Critical aquifer recharge areas are those areas where the potential for certain land use activities to adversely affect groundwater is high.
-  Category II
Critical aquifer recharge areas are areas that provide recharge effects to aquifers that are current or potentially will become potable water supplies and are vulnerable to contamination based on the type of land use activity.



Street Center Lines

-  State Highway
-  Major Road
-  Collector / Arterial
-  Local Access; Local Road

-  Subject Parcel(s)
-  Tax Parcels

-  Major Watershed Boundary








Designated Urban Growth Areas

-  Unincorporated Urban Growth Area
-  Incorporated City








Legend for Maps 4A & 4B

Comprehensive Plan Designations



RURAL

-  RR - Rural Residential
-  RP - Rural Protection
-  RW - Rural Wooded
-  FRL - Forest Resource Lands
-  MR - Mineral Resource Lands
-  RCO - Rural Commercial
-  RI - Rural Industrial


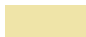

URBAN

-  UI - Urban Industrial
-  UHIC - Urban High-Intensity Commercial/Mixed Use
-  ULIC - Urban Low-Intensity Commercial/Mixed Use
-  ULDR - Urban Low-Density Residential
-  UMDR - Urban Medium-Density Residential
-  UHDR - Urban High-Density Residential
-  UTA - Poulsbo Urban Transition Area



LAMIRD

-  Limited Area of More Intense Rural Development-I
-  Limited Area of More Intense Rural Development-III

OTHER

-  CITY - Incorporated City
-  MIL - Military
-  T - Tribal Land
-  PF - Public Facility
-  Lake
-  Greater Puget Sound Hydrology

Designated Urban Growth Areas

-  Unincorporated Urban Growth Area
-  Incorporated City

-
-  Subject Parcel(s)






-  Tax Parcels

Street Center Lines











-  State Highway
-  Major Road
-  Collector / Arterial
-  Local Access; Local Road

Legend for Maps 5A & 5B








RURAL

-  FRL - Forest Resource Lands (1 DU/40 Ac)
-  RP - Rural Protection (1 DU/10 Ac)
-  RR - Rural Residential (1 DU/5 Ac)
-  RW - Rural Wooded (1 DU/20 Ac)
-  MRO - Mineral Resource Overlay


COMMERCIAL

-  BC - Business Center
-  BP - Business Park
-  Commercial (10-30 DU/Ac)
-  IND - Industrial
-  Low Intensity Commercial (10-30 DU/Ac)
-  NC - Neighborhood Commercial (10-30 DU/Ac)
-  Regional Center (10-30 DU/Ac)
-  RCO - Rural Commercial
-  REC - Rural Employment Center
-  RI - Rural Industrial
-  TTEC - Twelve Trees Employment Center

URBAN

-  Greenbelt (1-4 DU/Ac)
-  UCR - Urban Cluster Residential (5-9 DU/Ac)
-  UR - Urban Restricted (1-5 DU/Ac)
-  UH - Urban High Residential (19-30 DU/Ac)
-  UL - Urban Low Residential (5-9 DU/Ac)
-  UM - Urban Medium Residential (10-18 DU/Ac)
-  UVC - Urban Village Center (up to 18 DU/Ac)




KEYPORT VILLAGE

-  KVC - Keyport Village Commercial
-  KVLR - Keyport Village Low Residential
-  KVR - Keyport Village Residential




MANCHESTER VILLAGE

-  MVC - Manchester Village Commercial
-  MVLR - Manchester Village Low Residential
-  MVR - Manchester Village Residential






RURAL HISTORIC TOWN

-  RHTC - Rural Historic Town Commercial
-  RHTR - Rural Historic Town Residential
-  RHTW - Rural Historic Town Waterfront



SUQUAMISH VILLAGE

-  SVC - Suquamish Village Commercial
-  SVLR - Suquamish Village Low Residential
-  SVR - Suquamish Village Residential



OTHER



-  CITY - Incorporated City
-  MIL - Military
-  Park
-  T - Tribal Land
-  Greater Puget Sound Hydrology

CITY OF POULSBO


-  RL - Residential Low
-  LI - Light Industrial

Designated Urban Growth Areas

-  Incorporated City
-  Unincorporated Urban Growth Area

-  Subject Parcel(s)
-  Tax Parcels (Full Ownership)

Street Center Lines

-  State Highway
-  Major Road
-  Collector / Arterial
-  Local Access; Local Road