

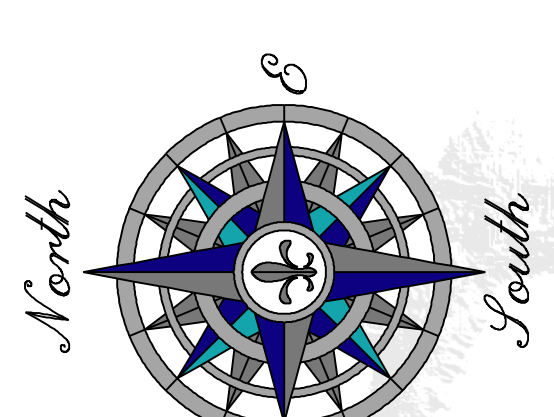
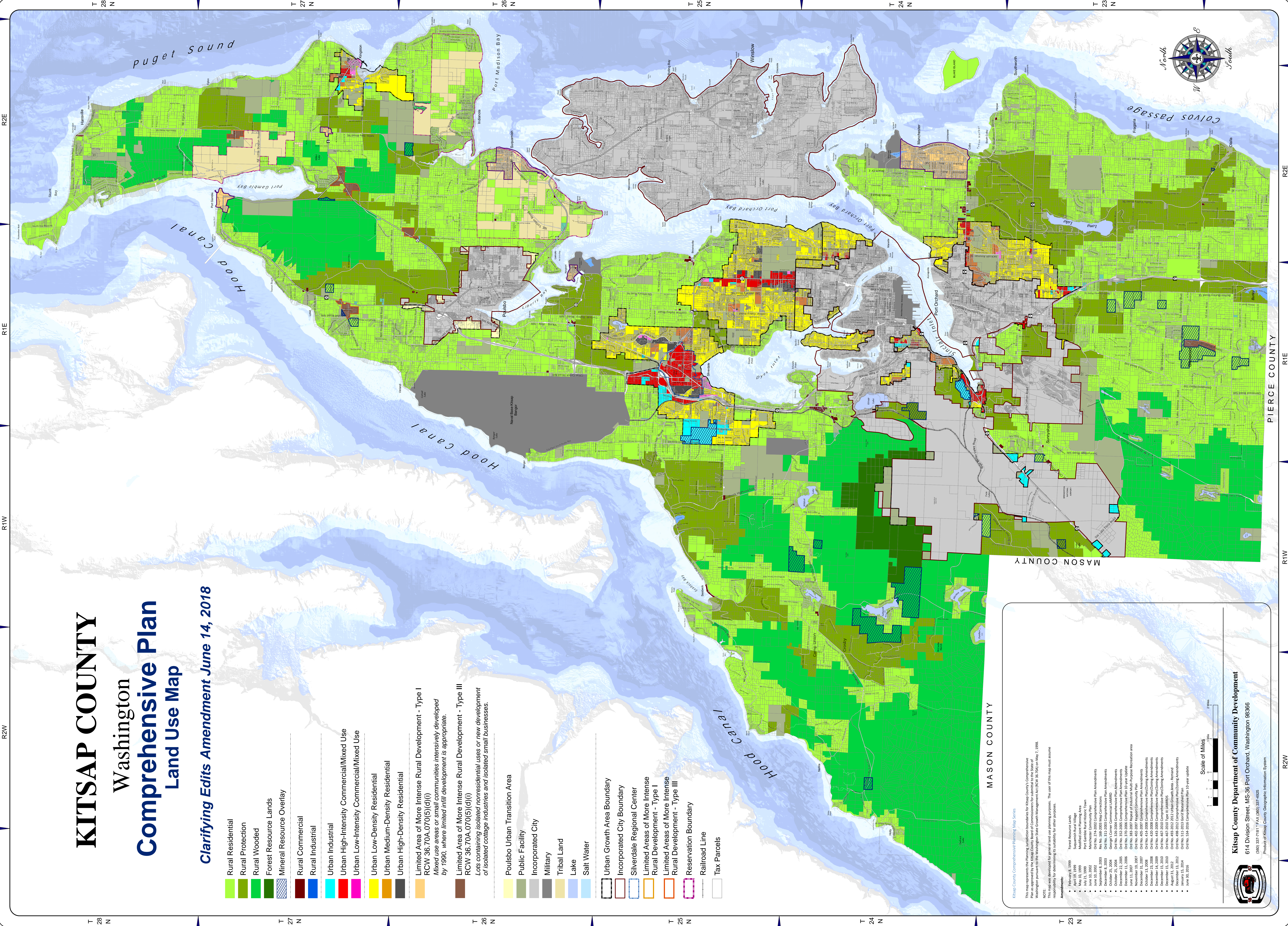
KITSAP COUNTY

Washington

Comprehensive Plan Land Use Map

Clarifying Edits Amendment June 14, 2018

- Rural Residential
- Rural Protection
- Rural Wooded
- Forest Resource Lands
- Mineral Resource Overlay
- Rural Commercial
- Rural Industrial
- Urban Industrial
- Urban High-Intensity Commercial/Mixed Use
- Urban Low-Intensity Commercial/Mixed Use
- Urban Low-Density Residential
- Urban Medium-Density Residential
- Urban High-Density Residential
- Limited Area of More Intense Rural Development - Type I
RCW 36.70A.070(5)(d)(i)
Mixed use areas or small communities intensively developed by 1990, where limited infill development is appropriate.
- Limited Area of More Intense Rural Development - Type III
RCW 36.70A.070(5)(d)(i)
Lots containing isolated nonresidential uses or new development of isolated cottage industries and isolated small businesses.
- Poulsbo Urban Transition Area
- Public Facility
- Incorporated City
- Military
- Tribal Land
- Lake
- Salt Water
- Urban Growth Area Boundary
- Incorporated City Boundary
- Silverdale Regional Center
- Limited Areas of More Intense Rural Development - Type I
- Limited Areas of More Intense Rural Development - Type III
- Reservation Boundary
- Railroad Line
- Tax Parcels



Kitsap County Department of Community Development
614 Division Street, MS-36 Port Orchard, Washington 98366
Phone: (360) 337-7171 • Fax: (360) 337-4825
Product of Kitsap County Geographic Information System

Kitsap County Comprehensive Planning Map Series

This map represents the Planning Jurisdiction boundaries for Kitsap County's Comprehensive Planning Map Series. The map was developed for general land use planning purposes. The user of this map must assume responsibility for determining its suitability for other purposes.

Amendments:

- February 8, 1999
- May 13, 1999
- July 21, 1999
- August 1, 1999
- July 10, 2002
- September 8, 2003
- December 6, 2003
- October 25, 2004
- December 22, 2005
- June 11, 2007
- November 19, 2007
- October 13, 2008
- December 23, 2008
- December 14, 2009
- December 15, 2010
- August 31, 2012
- January 15, 2014
- June 30, 2016

Scale of Miles

0 1 2 Miles