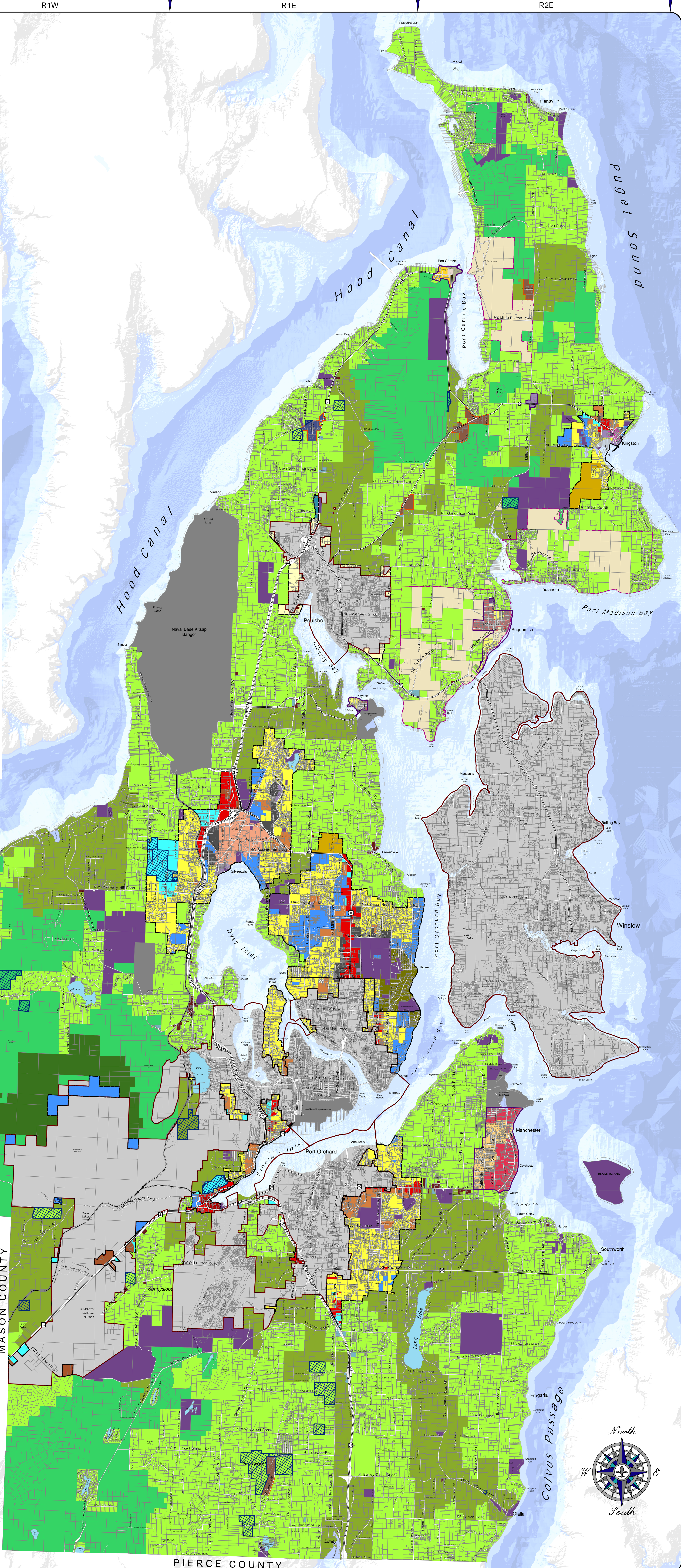


KITSAP COUNTY

Washington Zoning

Effective February 15, 1999
Proposed Amendment June 14, 2018

<ul style="list-style-type: none"> RR - Rural Residential (1 DU/5 Ac) RP - Rural Protection (1 DU/10 Ac) RW - Rural Wooded (1 DU/20 Ac) FRL - Forest Resource Lands (1 DU/40 Ac) MRO - Mineral Resource Overlay 	<p>Port Gamble Rural Historic Town</p> <ul style="list-style-type: none"> RHTC - Rural Historic Town Commercial RHTR - Rural Historic Town Residential RHTW - Rural Historic Town Waterfront
<ul style="list-style-type: none"> BC - Business Center BP - Business Park IND - Industrial C - Commercial (10-30 DU/Ac) RC - Regional Center (10-30 DU/Ac) NC - Neighborhood Commercial (10-30 DU/Ac) LIC - Low Intensity Commercial (10-30 DU/Ac) RCO - Rural Commercial REC - Rural Employment Center RI - Rural Industrial TTEC - Twelve Trees Employment Center 	<p>Suquamish Rural Village</p> <ul style="list-style-type: none"> SVC - Suquamish Village Commercial SVLR - Suquamish Village Low Residential SVR - Suquamish Village Residential
<ul style="list-style-type: none"> GB - Greenbelt (1-4 DU/Ac) UR - Urban Restricted (1-5 DU/Ac) UCR - Urban Cluster Residential (5-9 DU/Ac) UL - Urban Low Residential (5-9 DU/Ac) UM - Urban Medium Residential (10-18 DU/Ac) UH - Urban High Residential (19-30 DU/Ac) UVC - Urban Village Center (up to 18 DU/Ac) 	<p>City of Poulsbo Municipal Code</p> <ul style="list-style-type: none"> RL - Residential Low <p>Chapter 18.70 Residential Districts</p> <ul style="list-style-type: none"> LI - Light Industrial <p>Chapter 18.90 Business and Employment Districts</p>
<p>Keyport Rural Village</p> <ul style="list-style-type: none"> KVC - Keyport Village Commercial KVLR - Keyport Village Low Residential KVR - Keyport Village Residential 	<p>Designated Urban Growth Areas</p> <ul style="list-style-type: none"> Urban Growth Area Boundary Incorporated City Boundary
<p>Manchester Rural Village</p> <ul style="list-style-type: none"> MVC - Manchester Village Commercial MVLR - Manchester Village Low Residential MVR - Manchester Village Residential 	<p>Limited Areas of More Intense Rural Development</p> <ul style="list-style-type: none"> Type I Limited Area of More Intense Rural Development - Type I RCW 36.70A.070(5)(d)(i) Mixed use areas or small communities intensively developed by 1990, where limited infill development is appropriate. Type III Limited Area of More Intense Rural Development - Type III RCW 36.70A.070(5)(d)(ii) Lots containing isolated non-residential uses of new development of isolated cottage industries and isolated small businesses. Reservation Boundary



Kitsap County Comprehensive Planning Map Series

This map represents the Zoning Map adopted with Kitsap County's Comprehensive Plan as approved by the Kitsap County Board of Commissioners on May 7, 1998.

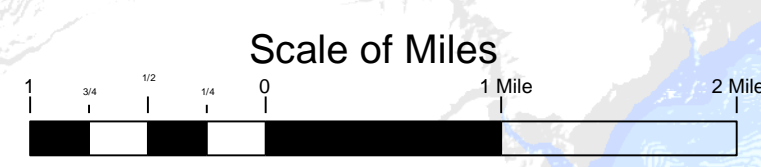
This map is effective as of June 30, 2016 superseding previous zoning maps.

The zone designations are defined in the text of Kitsap County Ordinance No. 534-2016 (Zoning Ordinance) which is available from the Department of Community Development.

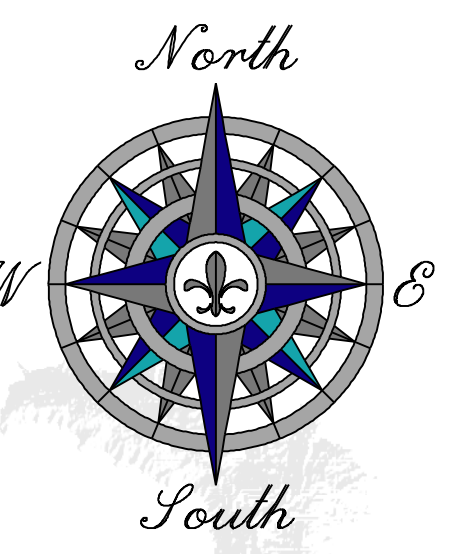
NOTE:
This map was developed for general land use planning purposes.
The user of this map must assume responsibility for determining its suitability for other purposes.

Amendments:

<ul style="list-style-type: none"> February 8, 1999 Forest Resource Lands April 19, 1999 Suquamish Rural Village May 10, 1999 Modified Joint Planning Area July 21, 1999 Port Gamble Rural Historic Town June 10, 2002 Manchester Community Plan June 10, 2002 Ord No. 274-2002 Comprehensive Plan Amendments September 8, 2003 Res No. 568-2003 Map Corrections December 8, 2003 Ord No. 311-2003 Comprehensive Plan Amendments October 25, 2004 Georgia's Corner Commercial LAMRD October 25, 2004 Ord No. 336-2004 Comprehensive Plan Amendments December 22, 2005 Ord No. 352-2005 Comprehensive Plan Amendments December 11, 2006 Ord No. 370-2006 Comprehensive Plan 10-year Update June 11, 2007 Ord No. 383-2007 Repeal of Industrial Multi-Purpose Recreation Area November 19, 2007 Ord No. 402-2007 Keyport Community Plan December 31, 2007 Ord No. 405-2007 Comprehensive Plan Amendments October 13, 2008 Ord No. 414-2008 Comprehensive Plan/Zoning Amendments December 23, 2008 Ord No. 420-2008 Comprehensive Plan/Zoning Amendments December 14, 2009 Ord No. 443-2009 Comprehensive Plan/Zoning Amendments December 15, 2010 Ord No. 467-2010 Comprehensive Plan/Zoning Amendments December 15, 2010 Ord No. 467-2010 Type III LAMRDs August 31, 2012 Ord No. 498-2012 2012 Urban Growth Area - Remaind December 13, 2012 Ord No. 498-2012 Comprehensive Plan/Zoning Amendments January 15, 2014 Ord No. 511-2013 Gost Watershed Plan June 30, 2016 Ord No. 534-2016 Comprehensive Plan 10-year update 	<ul style="list-style-type: none"> Forest Resource Lands Suquamish Rural Village Modified Joint Planning Area Port Gamble Rural Historic Town Manchester Community Plan Ord No. 274-2002 Comprehensive Plan Amendments Res No. 568-2003 Map Corrections Ord No. 311-2003 Comprehensive Plan Amendments Georgia's Corner Commercial LAMRD Ord No. 336-2004 Comprehensive Plan Amendments Ord No. 352-2005 Comprehensive Plan Amendments Ord No. 370-2006 Comprehensive Plan 10-year Update Ord No. 383-2007 Repeal of Industrial Multi-Purpose Recreation Area Ord No. 402-2007 Keyport Community Plan Ord No. 405-2007 Comprehensive Plan Amendments Ord No. 414-2008 Comprehensive Plan/Zoning Amendments Ord No. 420-2008 Comprehensive Plan/Zoning Amendments Ord No. 443-2009 Comprehensive Plan/Zoning Amendments Ord No. 467-2010 Comprehensive Plan/Zoning Amendments Ord No. 467-2010 Type III LAMRDs Ord No. 498-2012 2012 Urban Growth Area - Remaind Ord No. 498-2012 Comprehensive Plan/Zoning Amendments Ord No. 511-2013 Gost Watershed Plan Ord No. 534-2016 Comprehensive Plan 10-year update
---	---



Kitsap County Department of Community Development
614 Division Street, MS-36 Port Orchard, Washington 98366
(360) 337-7181 * FAX (360) 337-4925
Product of Kitsap County Geographic Information System



Clarifying Edits - Exhibit A2