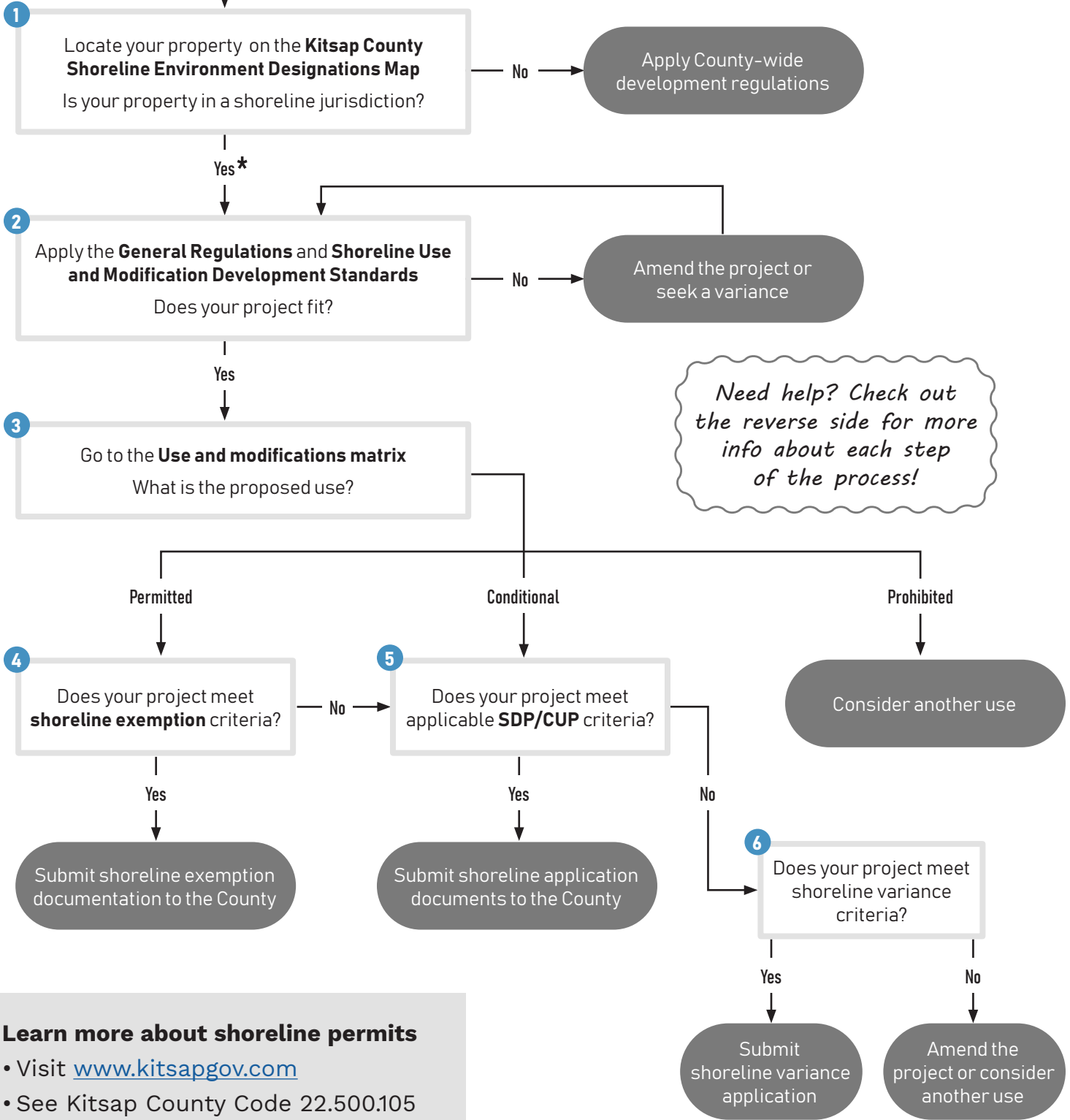


# Shoreline Permit Process Flowchart



**Start Here**



## Learn more about shoreline permits

- Visit [www.kitsapgov.com](http://www.kitsapgov.com)
- See Kitsap County Code 22.500.105
- Live chat with environmental staff at [www.kitsapgov.com/dcd/Pages/onlineapp.aspx](http://www.kitsapgov.com/dcd/Pages/onlineapp.aspx)

## Schedule a staff consultation

- Call (360) 377-5777

*\*Overwater structures and stabilization projects require a staff consultation*

*Other County, state, or federal permits may be required, including a Federal Clean Water Act 404 Permit, a Section 10 Rivers and Harbors Permit, or a WDFW Hydraulic Project Approval.*



**1** Locate your property on the **Kitsap County Shoreline Environment Designations Map**

Is your property in a shoreline jurisdiction?

Find these maps online:  
[kitsapgov.com/dcd/Pages/Shoreline\\_Master\\_Program.aspx](http://kitsapgov.com/dcd/Pages/Shoreline_Master_Program.aspx)

If your property has a **shoreline environmental designation** on it, then the answer is **YES**



**2** Apply the **General Regulations and Shoreline Use and Modification Development Standards**

Does your project fit?

Find these online in Kitsap County Code chapters 22.400 and 22.600:  
[codepublishing.com/WA/KitsapCounty](http://codepublishing.com/WA/KitsapCounty)

**3** Go to the **Use and motivations matrix**

What is the proposed use?

Find this online in Kitsap County Code 22.600.105:  
[codepublishing.com/WA/KitsapCounty](http://codepublishing.com/WA/KitsapCounty)

To use the matrix, you'll need to use the **shoreline environmental designation** you looked up in question **1**

**4** Does your project meet **shoreline exemption** criteria?

Read more about shoreline exemptions in this brochure:  
[kitsapgov.com/dcd/FormsandBrochures/Shoreline%20Exemption.pdf](http://kitsapgov.com/dcd/FormsandBrochures/Shoreline%20Exemption.pdf)

**5** Does your project meet applicable **SDP/CUP** criteria?

SDP = substantial development permit  
 CUP = conditional use permit

See Kitsap County Code 22.500.100:  
[codepublishing.com/WA/KitsapCounty](http://codepublishing.com/WA/KitsapCounty)

**6** Does your project meet shoreline variance criteria?