


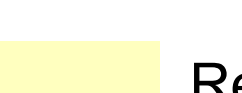



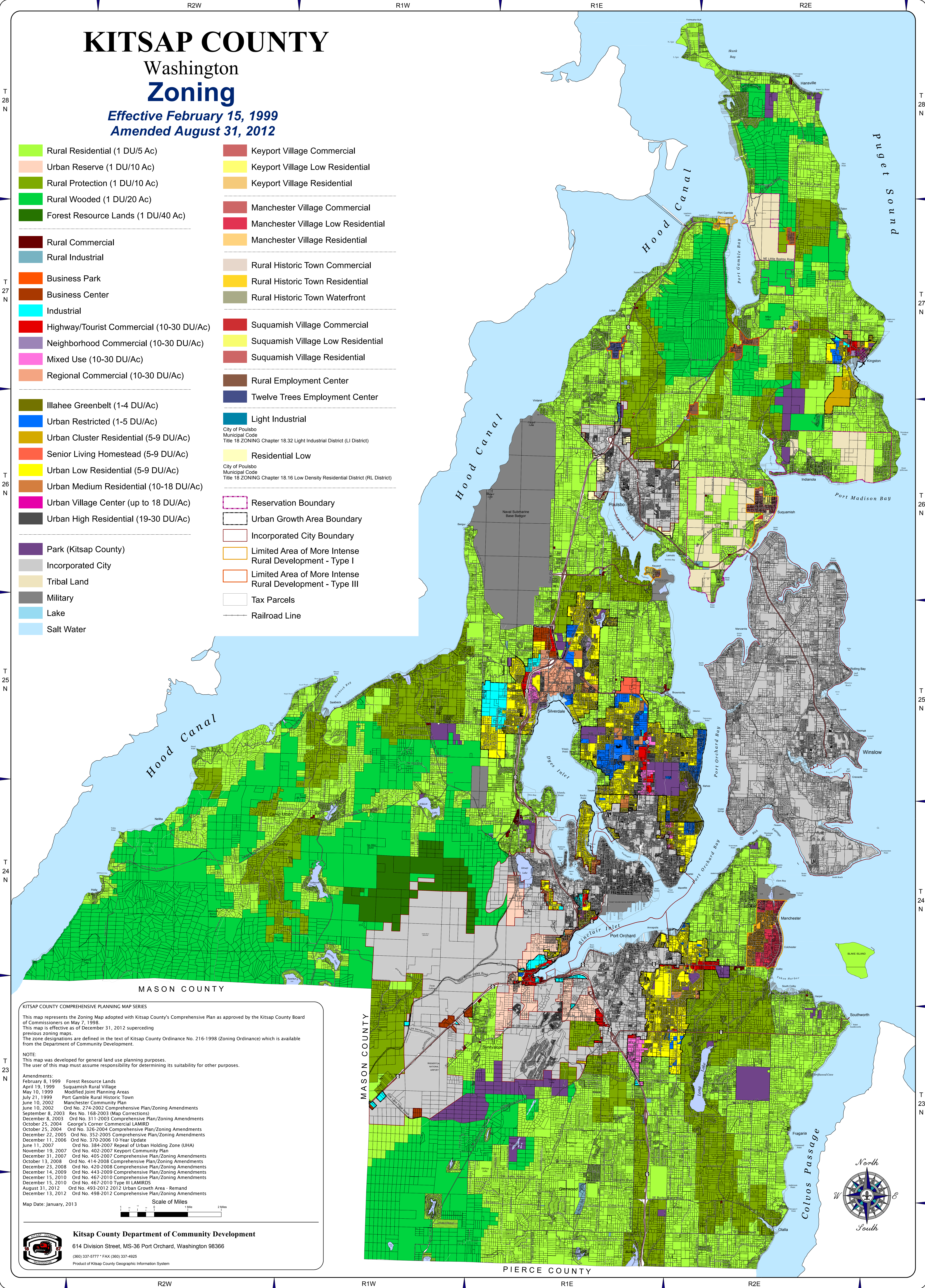


KITSAP COUNTY

Washington Zoning

Effective February 15, 1999
Amended August 31, 2012

- | | |
|--|---|
|  Rural Residential (1 DU/5 Ac) |  Keyport Village Commercial |
|  Urban Reserve (1 DU/10 Ac) |  Keyport Village Low Residential |
|  Rural Protection (1 DU/10 Ac) |  Keyport Village Residential |
|  Rural Wooded (1 DU/20 Ac) |  Manchester Village Commercial |
|  Forest Resource Lands (1 DU/40 Ac) |  Manchester Village Low Residential |
|  Rural Commercial |  Manchester Village Residential |
|  Rural Industrial |  Rural Historic Town Commercial |
|  Business Park |  Rural Historic Town Residential |
|  Business Center |  Rural Historic Town Waterfront |
|  Industrial |  Suquamish Village Commercial |
|  Highway/Tourist Commercial (10-30 DU/Ac) |  Suquamish Village Low Residential |
|  Neighborhood Commercial (10-30 DU/Ac) |  Suquamish Village Residential |
|  Mixed Use (10-30 DU/Ac) |  Rural Employment Center |
|  Regional Commercial (10-30 DU/Ac) |  Twelve Trees Employment Center |
|  Illahee Greenbelt (1-4 DU/Ac) |  Light Industrial |
|  Urban Restricted (1-5 DU/Ac) |  Residential Low |
|  Urban Cluster Residential (5-9 DU/Ac) |  Reservation Boundary |
|  Senior Living Homestead (5-9 DU/Ac) |  Urban Growth Area Boundary |
|  Urban Low Residential (5-9 DU/Ac) |  Incorporated City Boundary |
|  Urban Medium Residential (10-18 DU/Ac) |  Limited Area of More Intense Rural Development - Type I |
|  Urban Village Center (up to 18 DU/Ac) |  Limited Area of More Intense Rural Development - Type III |
|  Urban High Residential (19-30 DU/Ac) |  Tax Parcels |
|  Park (Kitsap County) |  Railroad Line |
|  Incorporated City | |
|  Tribal Land | |
|  Military | |
|  Lake | |
|  Salt Water | |



KITSAP COUNTY COMPREHENSIVE PLANNING MAP SERIES

This map represents the Zoning Map adopted with Kitsap County's Comprehensive Plan as approved by the Kitsap County Board of Commissioners on May 7, 1998. This map is effective as of December 31, 2012, superseding previous zoning maps. The zone designations are defined in the text of Kitsap County Ordinance No. 216-1998 (Zoning Ordinance) which is available from the Department of Community Development.

NOTE:
This map was developed for general land use planning purposes. The user of this map must assume responsibility for determining its suitability for other purposes.

Amendments:

February 8, 1999	Forest Resource Lands
April 19, 1999	Suquamish Rural Village
May 10, 1999	Modified Joint Planning Areas
July 21, 1999	Port Gamble Rural Historic Town
June 10, 2002	Manchester Community Plan
June 10, 2002	Ord No. 274-2002 Comprehensive Plan/Zoning Amendments
September 8, 2003	Res No. 168-2003 (Map Corrections)
December 8, 2003	Ord No. 311-2003 Comprehensive Plan/Zoning Amendments
October 25, 2004	George's Corner Commercial LAMIRD
October 25, 2004	Ord No. 326-2004 Comprehensive Plan/Zoning Amendments
December 22, 2005	Ord No. 352-2005 Comprehensive Plan/Zoning Amendments
December 11, 2006	Ord No. 370-2006 10 Year Update
June 11, 2007	Ord No. 384-2007 Repeal of Urban Holding Zone (UHA)
November 19, 2007	Ord No. 402-2007 Keyport Community Plan
December 31, 2007	Ord No. 405-2007 Comprehensive Plan/Zoning Amendments
October 13, 2008	Ord No. 414-2008 Comprehensive Plan/Zoning Amendments
December 23, 2008	Ord No. 420-2008 Comprehensive Plan/Zoning Amendments
December 14, 2009	Ord No. 443-2009 Comprehensive Plan/Zoning Amendments
December 15, 2010	Ord No. 467-2010 Comprehensive Plan/Zoning Amendments
December 15, 2010	Ord No. 467-2010 Type III LAMIRDS
August 31, 2012	Ord No. 493-2012 2012 Urban Growth Area - Remand
December 13, 2012	Ord No. 498-2012 Comprehensive Plan/Zoning Amendments

Map Date: January, 2013

Scale of Miles
0 1 2 3

Kitsap County Department of Community Development
614 Division Street, MS-36 Port Orchard, Washington 98366
(360) 337-6777 • FAX (360) 337-4925
Product of Kitsap County Geographic Information System

