

Zoning KITSAP COUNTY Washington

- Chapter 17.310
Rural Residential (RR) 1 DU/5 Ac
- Chapter 17.315
Urban Reserve (URS) 1 DU/10 Ac
- Chapter 17.305
Rural Protection (RP) 1 DU/10 Ac
- Chapter 17.301
Rural Wooded (RW) 1 DU/20 Ac
- Chapter 17.300
Forest Resource Lands (FRL) 1 DU/40 Ac
- Chapter 17.360
Business Park (BP)
- Chapter 17.365
Business Center (BC)
- Airport and Industrial Zones
Chapter 17.370
Industrial (I)
Rural Industrial (RI)
- Commercial Zones
Chapter 17.355
Highway/Tourist Commercial (HTC) 10-30 DU/Ac
Neighborhood Commercial (NC) 10-30 DU/Ac
Regional Commercial (RC) 10-30 DU/Ac
Low Intensity Commercial (LIC) 10-30 DU/Ac
Rural Commercial (RCO)
- Rural Employment Center &
Twelve Trees Employment Center
Chapter 17.376
Rural Employment Center (REC)
Twelve Trees Employment Center (TTEC)
- Chapter 17.325
Urban Restricted (UR) 1-5 DU/Ac
- Chapter 17.326
Illahee Greenbelt (IGZ) 1-4 DU/Ac
- Chapter 17.330
Urban Low Residential (UL) 5-9 DU/Ac
- Chapter 17.332
Senior Living Homestead (SLH) 5-9 DU/Ac
- Chapter 17.335
Urban Cluster Residential (UCR) 5-9 DU/Ac
- Chapter 17.340
Urban Medium Residential (UM) 10-18 DU/Ac
- Chapter 17.350
Urban High Residential (UH) 19-30 DU/Ac
- Chapter 17.352
Mixed Use (MU) 10-30 DU/Ac
- Urban Center Zones
Chapter 17.353
Urban Village Center (UVC) up to 18 DU/Ac
- Poulsbo Urban Transition Area
Chapter 17.318
Light Industrial (LI)
- City of Poulsbo
Municipal Code Title 18 - Zoning Chapter 18.32
Light Industrial District (LI)
- Residential Low (RL)
- City of Poulsbo
Municipal Code Title 18 - Zoning Chapter 18.32
Low Density Residential District (RL District)

- Limited Area of More Intense Rural Development (LAMIRD)
Suquamish Rural Village
Chapter 17.321(A)
Suquamish Village Commercial (SVC)
Suquamish Village Low Residential (SVLR)
Suquamish Village Residential (SVR)
- Port Gamble Rural Historic Town
Chapter 17.321(B)
Rural Historic Town Commercial (RHTC)
Rural Historic Town Residential (RHTR)
Rural Historic Town Waterfront (RHTW)
- Manchester Rural Village
Chapter 17.321(C)
Manchester Village Commercial (MVC)
Manchester Village Low Residential (MVLRL)
Manchester Village Residential (MVR)
- Keyport Rural Village
Chapter 17.321(D)
Keyport Village Commercial (KVC)
Keyport Village Low Residential (KVLRL)
Keyport Village Residential (KVR)

- Limited Area of More Intense Rural Development (LAMIRD)
RCW 36.70A3070(5)(d)(i)
Limited Area of More Intense Rural Development - Type I
Mixed Use areas or small communities intensively developed
by 1990, where limited infill development is appropriate
- Limited Area of More Intense Rural Development - Type III
Lots containing isolated non-residential uses or new development
of isolated cottage industries and isolated small businesses
- Chapter 17.377
Park (P) Kitsap County
- Incorporated City (CITY)
- Tribal Land (T)
- Military (ML)
- Urban Growth Area Boundary
- Incorporated City Boundary
- Reservation Boundary

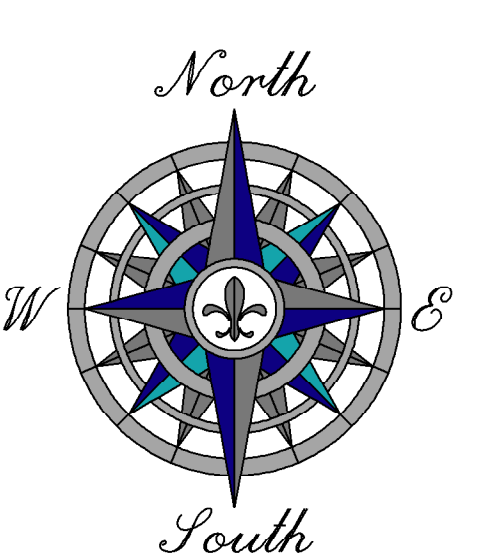
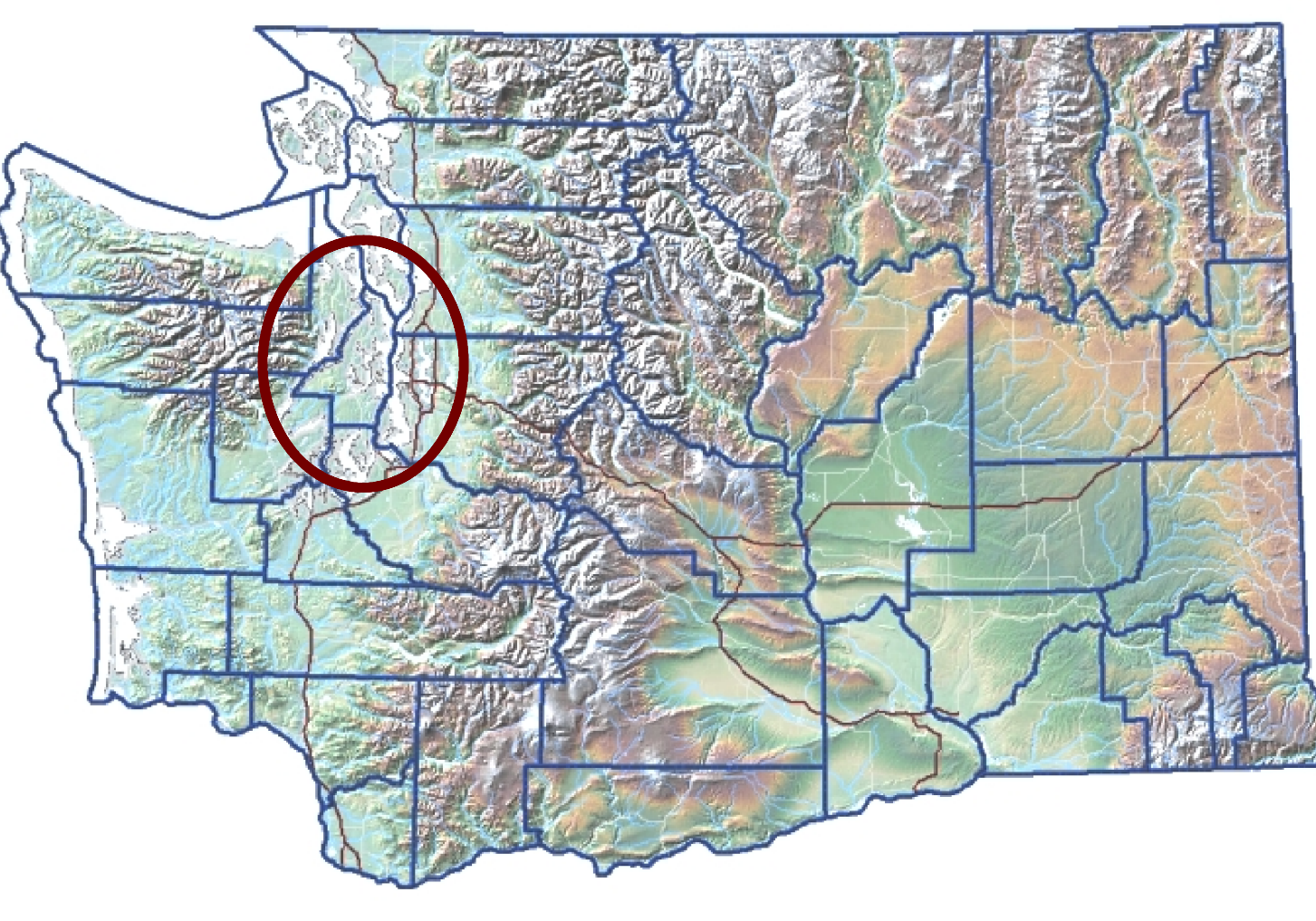
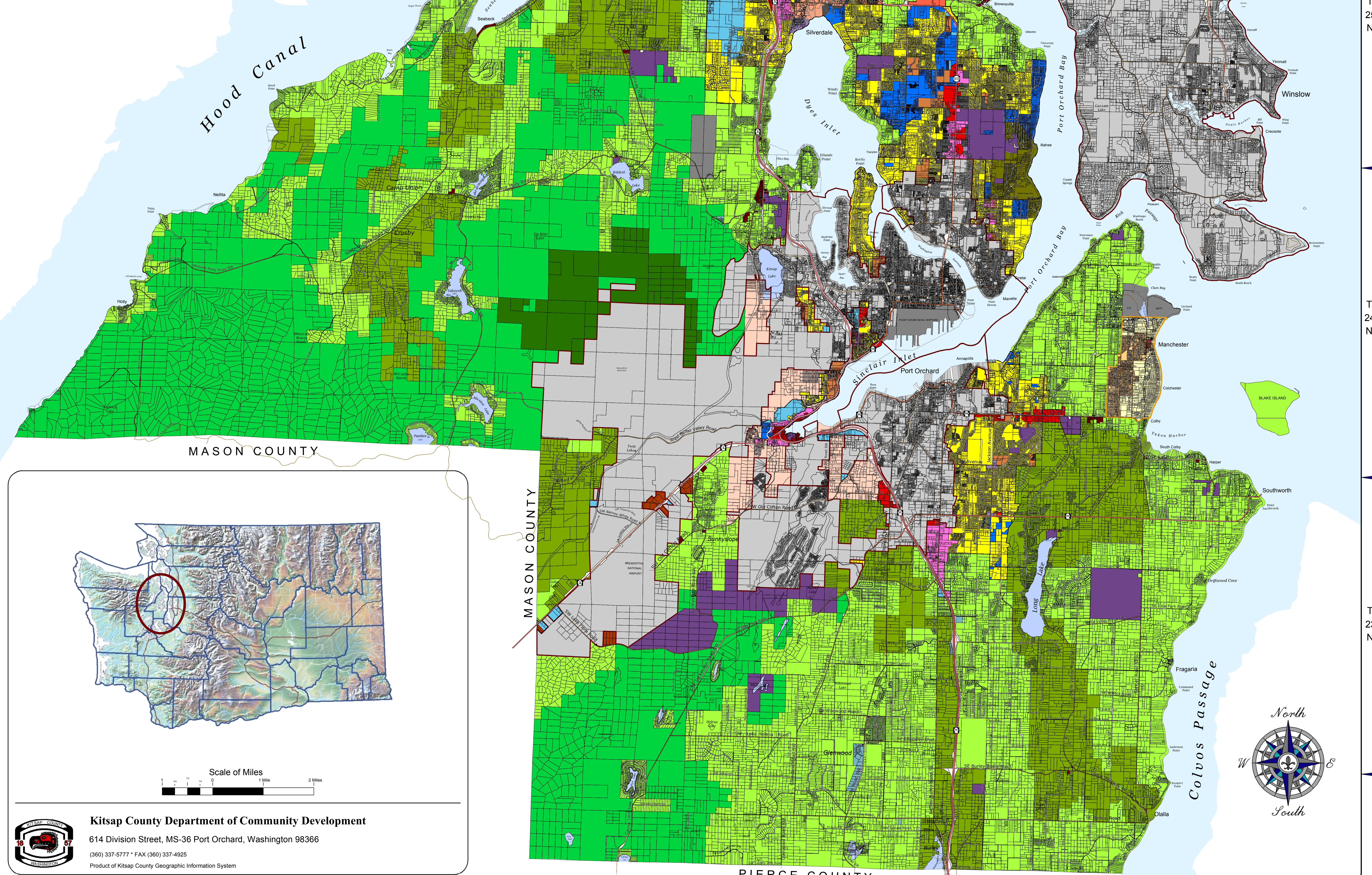
KITSAP COUNTY COMPREHENSIVE PLANNING MAP SERIES
This map represents the Zoning Map adopted with Kitsap County's Comprehensive Plan as approved by the Kitsap County Board of Commissioners on May 7, 1998.

This map is effective as of January 15, 2014 superseding previous zoning maps.

The zone designations are defined in the text of Kitsap County Code Title 17 'Zoning' which is available from the Department of Community Development or on-line at: www.kitsapgov.com

NOTE:
This map was developed for general land use planning purposes.
The user of this map must assume responsibility for determining its suitability for other purposes.

- Amendments**
- > February 8, 1999 Forest Resource Lands
 - > April 19, 1999 Suquamish Rural Village
 - > May 10, 1999 Modified Joint Planning Areas
 - > July 21, 1999 Port Gamble Rural Historic Town
 - > June 10, 2002 Manchester Community Plan
 - > June 10, 2002 Ord No. 274-2002 Comprehensive Plan/Zoning Amendments
 - > September 8, 2003 Res No. 168-2003 (Map Corrections)
 - > December 8, 2003 Ord No. 311-2003 Comprehensive Plan/Zoning Amendments
 - > October 25, 2004 George's Corner Commercial LAMIRD
 - > October 25, 2004 Ord No. 326-2004 Comprehensive Plan/Zoning Amendments
 - > December 22, 2005 Ord No. 352-2005 Comprehensive Plan/Zoning Amendments
 - > December 11, 2006 Ord No. 370-2006 10-Year Update
 - > June 11, 2007 Ord No. 384-2007 Repeal of Urban Holding Zone (UHA)
 - > November 19, 2007 Ord No. 402-2007 Keyport Community Plan
 - > December 31, 2007 Ord No. 405-2007 Comprehensive Plan/Zoning Amendments
 - > October 13, 2008 Ord No. 414-2008 Comprehensive Plan/Zoning Amendments
 - > December 23, 2008 Ord No. 420-2008 Comprehensive Plan/Zoning Amendments
 - > December 14, 2009 Ord No. 443-2009 Comprehensive Plan/Zoning Amendments
 - > December 15, 2010 Ord No. 467-2010 Comprehensive Plan/Zoning Amendments
 - > December 15, 2010 Ord No. 467-2010 Type III LAMIRDS
 - > August 31, 2012 Ord No. 493-2012 2012 Urban Growth Area - Remand
 - > December 13, 2012 Ord No. 498-2012 Comprehensive Plan/Zoning Amendments
 - > January 15, 2014 Ord No. 511-2013 Gorst Watershed Plan



Kitsap County Department of Community Development
614 Division Street, MS-36 Port Orchard, Washington 98366
(360) 337-5777 • FAX (360) 337-4925
Product of Kitsap County Geographic Information System

R2W R1W R1E R2E

T 28 N

T 27 N

T 26 N

T 25 N

T 24 N

T 23 N

P u g e t S o u n d

H o o d C a n a l

P o r t G a m b l e B a y

P o r t M a d i s o n B a y

P o r t O r c h a r d B a y

S i l v e r d a l e

D e s I n l e t

S t a i r I n l e t

C o l v o s P a s s a g e

M A S O N C O U N T Y

P I E R C E C O U N T Y