

KITSAP COUNTY

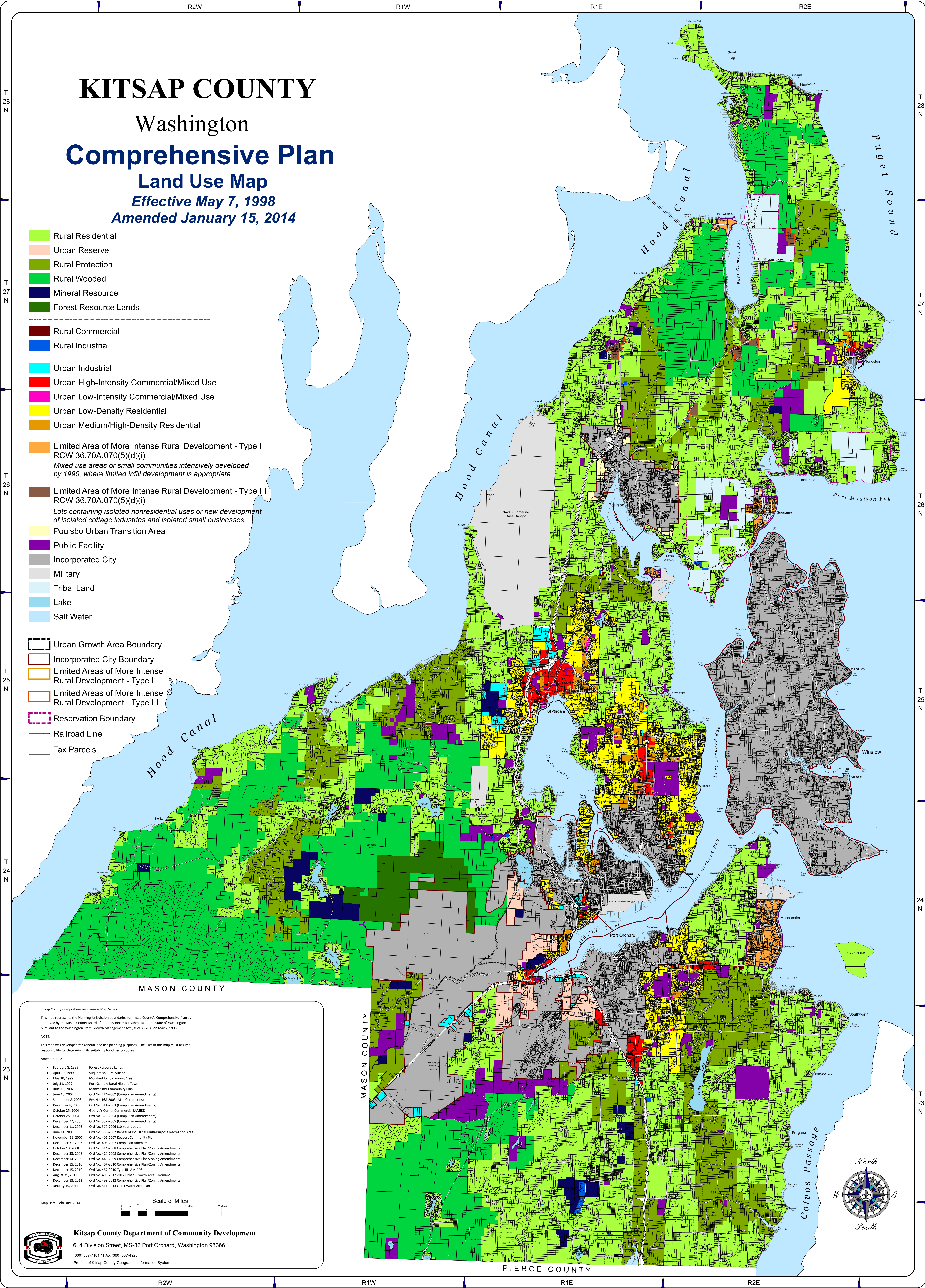
Washington

Comprehensive Plan

Land Use Map

Effective May 7, 1998
Amended January 15, 2014

- Rural Residential
 - Urban Reserve
 - Rural Protection
 - Rural Wooded
 - Mineral Resource
 - Forest Resource Lands
-
- Rural Commercial
 - Rural Industrial
-
- Urban Industrial
 - Urban High-Intensity Commercial/Mixed Use
 - Urban Low-Intensity Commercial/Mixed Use
 - Urban Low-Density Residential
 - Urban Medium/High-Density Residential
-
- Limited Area of More Intense Rural Development - Type I
RCW 36.70A.070(5)(d)(i)
Mixed use areas or small communities intensively developed by 1990, where limited infill development is appropriate.
 - Limited Area of More Intense Rural Development - Type III
RCW 36.70A.070(5)(d)(i)
Lots containing isolated nonresidential uses or new development of isolated cottage industries and isolated small businesses.
 - Poulsbo Urban Transition Area
 - Public Facility
 - Incorporated City
 - Military
 - Tribal Land
 - Lake
 - Salt Water
-
- Urban Growth Area Boundary
 - Incorporated City Boundary
 - Limited Areas of More Intense Rural Development - Type I
 - Limited Areas of More Intense Rural Development - Type III
 - Reservation Boundary
 - Railroad Line
 - Tax Parcels



Kitsap County Comprehensive Planning Map Series

This map represents the Planning Jurisdiction boundaries for Kitsap County's Comprehensive Plan as approved by the Kitsap County Board of Commissioners for submission to the State of Washington pursuant to the Washington State Growth Management Act (RCW 36.70A) on May 7, 1998.

NOTE:
This map was developed for general land use planning purposes. The user of this map must assume responsibility for determining its suitability for other purposes.

Amendments:

- February 8, 1999 Forest Resource Lands
- April 15, 1999 Squamish Rural Village
- May 10, 1999 Modified Joint Planning Area
- July 21, 1999 Port Gamble Rural Historic Town
- June 10, 2002 Manchester Community Plan
- June 10, 2002 Ord No. 274-2002 (Comp Plan Amendments)
- September 8, 2003 Res No. 168-2003 (Map Correction)
- December 8, 2003 Ord No. 311-2003 (Comp Plan Amendments)
- October 25, 2004 George's Corner Commercial LAMRD
- October 25, 2004 Ord No. 326-2004 (Comp Plan Amendments)
- December 22, 2005 Ord No. 352-2005 (Comp Plan Amendments)
- December 11, 2006 Ord No. 370-2006 (10-year Update)
- June 15, 2007 Ord No. 383-2007 (Appeal of Industrial Multi-Purpose Recreation Area)
- November 19, 2007 Ord No. 402-2007 (Keport Community Plan)
- December 31, 2007 Ord No. 405-2007 (Comp Plan Amendments)
- October 13, 2008 Ord No. 414-2008 (Comprehensive Plan/Zoning Amendments)
- December 21, 2008 Ord No. 420-2008 (Comprehensive Plan/Zoning Amendments)
- December 14, 2009 Ord No. 443-2009 (Comprehensive Plan/Zoning Amendments)
- December 15, 2010 Ord No. 467-2010 (Comprehensive Plan/Zoning Amendments)
- December 15, 2010 Ord No. 467-2010 (Type III LAMRDs)
- August 31, 2012 Ord No. 493-2012 (2012 Urban Growth Area - Remainder)
- December 13, 2012 Ord No. 498-2012 (Comprehensive Plan/Zoning Amendments)
- January 15, 2014 Ord No. 511-2013 (Gorst Watershed Plan)

Map Date: February, 2014

Scale of Miles: 0 1 2

Kitsap County Department of Community Development
614 Division Street, MS-36 Port Orchard, Washington 98366
(360) 337-7181 • FAX (360) 337-4925
Product of Kitsap County Geographic Information System

