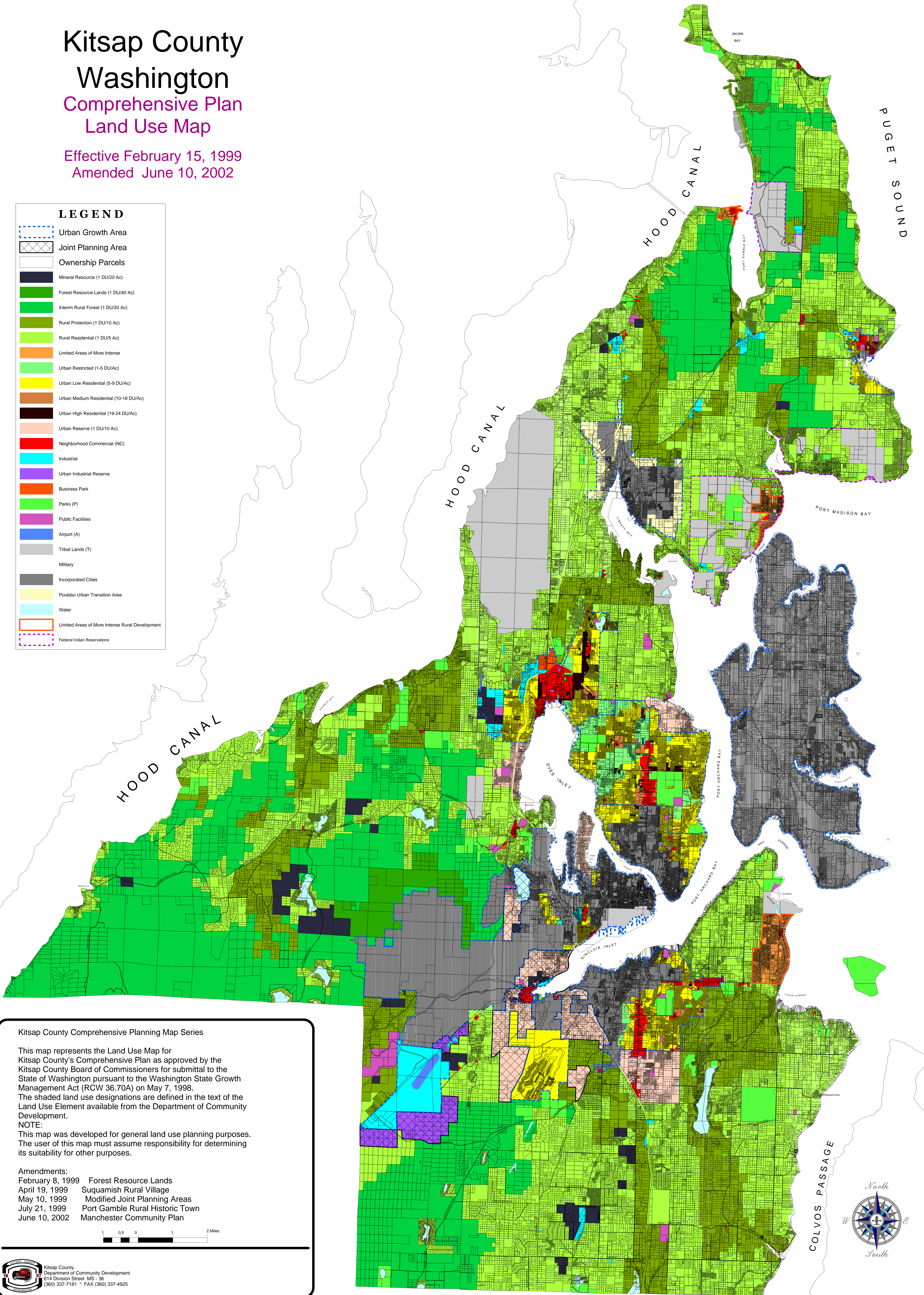


Kitsap County Washington Comprehensive Plan Land Use Map

Effective February 15, 1999
Amended June 10, 2002

LEGEND

| | |
|--|---|
| | Urban Growth Area |
| | Joint Planning Area |
| | Ownership Parcels |
| | Mineral Resource (1 DU/20 Ac) |
| | Forest Resource Lands (1 DU/40 Ac) |
| | Interim Rural Forest (1 DU/20 Ac) |
| | Rural Protection (1 DU/10 Ac) |
| | Rural Residential (1 DU/5 Ac) |
| | Limited Areas of More Intense |
| | Urban Restricted (1-5 DU/Ac) |
| | Urban Low Residential (6-9 DU/Ac) |
| | Urban Medium Residential (10-18 DU/Ac) |
| | Urban High Residential (19-24 DU/Ac) |
| | Urban Reserve (1 DU/10 Ac) |
| | Neighborhood Commercial (NC) |
| | Industrial |
| | Urban Industrial Reserve |
| | Business Park |
| | Parks (P) |
| | Public Facilities |
| | Airport (A) |
| | Tribal Lands (T) |
| | Military |
| | Incorporated Cities |
| | Poulsbo Urban Transition Area |
| | Water |
| | Limited Areas of More Intense Rural Development |
| | Federal Indian Reservations |



Kitsap County Comprehensive Planning Map Series

This map represents the Land Use Map for Kitsap County's Comprehensive Plan as approved by the Kitsap County Board of Commissioners for submittal to the State of Washington pursuant to the Washington State Growth Management Act (RCW 36.70A) on May 7, 1998. The shaded land use designations are defined in the text of the Land Use Element available from the Department of Community Development.

NOTE:
This map was developed for general land use planning purposes. The user of this map must assume responsibility for determining its suitability for other purposes.

Amendments:
February 8, 1999 Forest Resource Lands
April 19, 1999 Suquamish Rural Village
May 10, 1999 Modified Joint Planning Areas
July 21, 1999 Port Gamble Rural Historic Town
June 10, 2002 Manchester Community Plan

