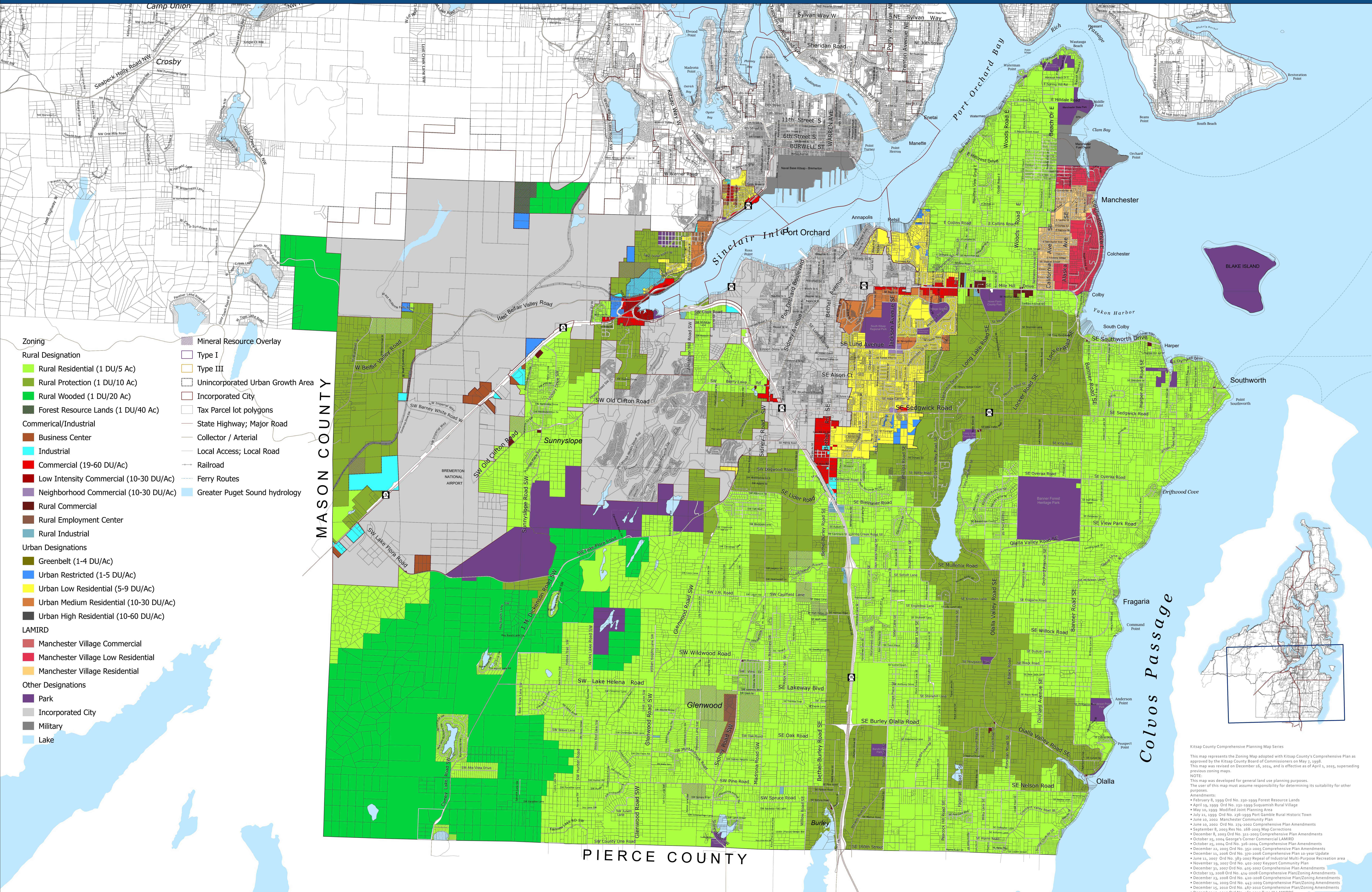


South Kitsap - Commissioner District 2



- Zoning**
- Rural Designation**
 - Rural Residential (1 DU/5 Ac)
 - Rural Protection (1 DU/10 Ac)
 - Rural Wooded (1 DU/20 Ac)
 - Forest Resource Lands (1 DU/40 Ac)
 - Commercial/Industrial**
 - Business Center
 - Industrial
 - Commercial (19-60 DU/Ac)
 - Low Intensity Commercial (10-30 DU/Ac)
 - Neighborhood Commercial (10-30 DU/Ac)
 - Rural Commercial
 - Rural Employment Center
 - Rural Industrial
 - Urban Designations**
 - Greenbelt (1-4 DU/Ac)
 - Urban Restricted (1-5 DU/Ac)
 - Urban Low Residential (5-9 DU/Ac)
 - Urban Medium Residential (10-30 DU/Ac)
 - Urban High Residential (10-60 DU/Ac)
 - LAMIRD**
 - Manchester Village Commercial
 - Manchester Village Low Residential
 - Manchester Village Residential
 - Other Designations**
 - Park
 - Incorporated City
 - Military
 - Lake
 - Mineral Resource Overlay**
 - Type I
 - Type III
 - Unincorporated Urban Growth Area**
 - Incorporated City**
 - Tax Parcel lot polygons**
 - State Highway; Major Road**
 - Collector / Arterial**
 - Local Access; Local Road**
 - Railroad**
 - Ferry Routes**
 - Greater Puget Sound hydrology**

- Kitsap County Comprehensive Planning Map Series**
- This map represents the Zoning Map adopted with Kitsap County's Comprehensive Plan as approved by the Kitsap County Board of Commissioners on May 7, 1998. This map was revised on December 16, 2024, and is effective as of April 1, 2025, superseding previous zoning maps.
- NOTE:**
This map was developed for general land use planning purposes. The user of this map must assume responsibility for determining its suitability for other purposes.
- Amendments**
- February 6, 1999 Ord No. 130-1999 Forest Resource Lands
 - April 15, 1999 Ord No. 231-1999 Suquamish Rural Village
 - May 10, 1999 Modified Joint Planning Area
 - July 21, 1999 Ord No. 326-1999 Port Gamble Rural Historic Town
 - June 10, 2002 Manchester Community Plan
 - June 10, 2002 Ord No. 274-2002 Comprehensive Plan Amendments
 - September 8, 2003 Ord No. 168-2003 Map Corrections
 - December 8, 2003 Ord No. 313-2003 Comprehensive Plan Amendments
 - October 25, 2004 George's Corner Commercial LAMIRD
 - October 25, 2004 Ord No. 326-2004 Comprehensive Plan Amendments
 - December 22, 2005 Ord No. 351-2005 Comprehensive Plan Amendments
 - December 22, 2005 Ord No. 370-2005 Comprehensive Plan 10 year update
 - June 11, 2007 Ord No. 383-2007 Repeal of Industrial Multi-Purpose Recreation Area
 - November 19, 2007 Ord No. 407-2007 Keyport Community Plan
 - December 11, 2007 Ord No. 445-2007 Comprehensive Plan Amendments
 - October 13, 2008 Ord No. 414-2008 Comprehensive Plan/Zoning Amendments
 - December 23, 2008 Ord No. 440-2008 Comprehensive Plan/Zoning Amendments
 - December 30, 2009 Ord No. 443-2009 Comprehensive Plan/Zoning Amendments
 - December 25, 2010 Ord No. 487-2010 Comprehensive Plan/Zoning Amendments
 - December 25, 2010 Ord No. 489-2010 Type III LAMIRD'S
 - August 31, 2012 Ord No. 493-2012 Urban Growth Area - Remand
 - December 13, 2012 Ord No. 498-2012 Comprehensive Plan/Zoning Amendments
 - January 15, 2014 Ord No. 511-2014 Grist Watershed Plan
 - June 30, 2016 Ord No. 534-2016 Comprehensive Plan 10 year update
 - March 12, 2018 Ord No. 553-2018 Rezoning
 - December 10, 2018 Ord No. 555-2018 Comprehensive Plan/Zoning Amendments
 - November 25, 2019 Ord No. 583-2019 Comprehensive Plan/Zoning Amendment (Repeat of 555-2018)
 - April 27, 2020 Ord No. 587-2020 Comprehensive Plan/Zoning Amendments
 - November 11, 2021 Ord No. 603-2021 Comprehensive Plan/Zoning Amendments
 - December 23, 2021 Res No. 132-2021 Development Agreement/Zoning Amendments
 - January 10, 2022 Ord No. 609-2022 Comprehensive Plan/Zoning Amendments
 - April 14, 2023 Ord No. 612-2023 Comprehensive Plan/Zoning Amendments
 - November 23, 2023 Ord No. 628-2023 Rezoning
 - December 16, 2024 Ord No. 637-2024 Comprehensive Plan Update

This map was created from existing map sources, not from field surveys. Determination of fitness for use lies with the user, as does the responsibility for understanding the accuracy and limitations of this map and data.

The information on this map may have been collected from various sources and can change over time without notice.

While great care was taken in making this map, there is no guarantee or warranty of its accuracy as to labeling, placement or location of any geographic features present. This map is intended for informational purposes only and is not a substitute for a field survey.

Kitsap County and its officials and employees assume no responsibility or legal liability for the accuracy, completeness, reliability, or timeliness of any information on this map.

Map Published Date: April 1, 2025

0 0.25 0.5 1 1.5 2 Miles



Zoning

Kitsap County Department of Community Development
 619 Division Street, MS-36, Port Orchard, Washington 98366
 VOICE (360) 337-5777 * <https://www.kitsapgov.com/dcd/>

