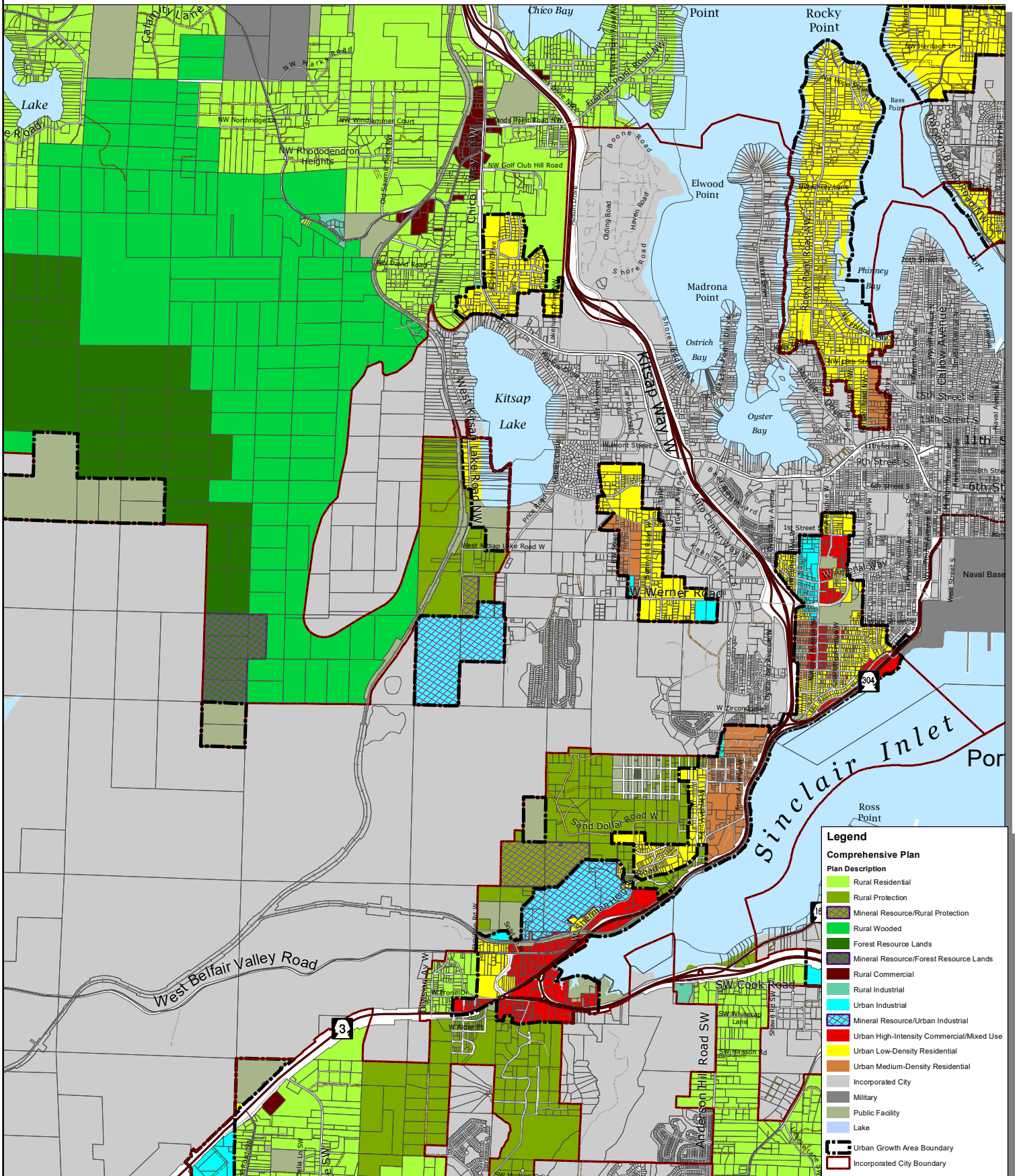


Bremerton West Urban Growth Area

DRAFT



Legend	
Comprehensive Plan	
Plan Description	
	Rural Residential
	Rural Protection
	Mineral Resource/Rural Protection
	Rural Wooded
	Forest Resource Lands
	Mineral Resource/Forest Resource Lands
	Rural Commercial
	Rural Industrial
	Urban Industrial
	Mineral Resource/Urban Industrial
	Urban High-Intensity Commercial/Mixed Use
	Urban Low-Density Residential
	Urban Medium-Density Residential
	Incorporated City
	Military
	Public Facility
	Lake
	Urban Growth Area Boundary
	Incorporated City Boundary
	State Highway
	Collector / Arterial
	Local Access; Local Road
	Easement
	Railroad Lines
	Greater Puget Sound hydrology

Comprehensive Plan



This map was created from existing map sources, not from field surveys. Determination of fitness for use lies with the user; we do not assume responsibility for understanding the accuracy and limitations of this map and data. The information on this map may have been collected from various sources and can change over time without notice. While great care was taken in making this map, there is no guarantee or warranty of its accuracy as to labeling, placement or location of any geographic features present. This map is intended for informational purposes only and is not a substitute for a field survey. Kitsap County and its officials and employees assume no responsibility or legal liability for the accuracy, completeness, reliability or timeliness of any information on this map. Map Published Date: December 24, 2024

Kitsap County Department of Community Development
614 Division Street, MS-36, Port Orchard, Washington 98366
VOICE (360) 337-5777 (Kitsap One) * <https://www.kitsapgov.com/>