



# 2026 Budget Request of Kitsap County



**Yolanda Fong**  
Administrator



**Melissa Laird**  
Finance & Accounting  
Manager

1

## About Kitsap Public Health

**OUR VISION**  
A safe and healthy Kitsap  
County for all.

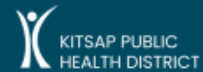
**OUR MISSION**  
We prevent disease and  
protect and promote the  
health of all people in  
Kitsap County.

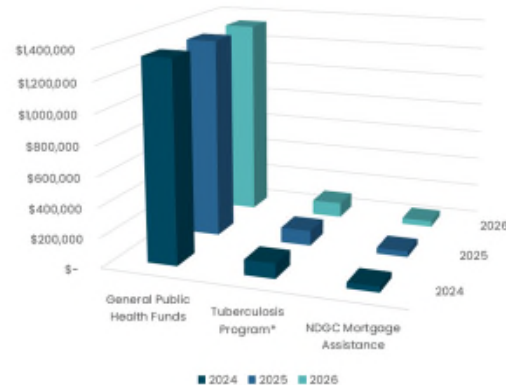
kitsappublichealth.org

2

# 2026 Budget Request



Status quo request - \$1,478,977



\* Counties are required to fund Tuberculosis investigation and treatment work per RCW 70.30.045

[kitsappublichealth.org](https://kitsappublichealth.org)

3

## Kitsap Public Health District is a Special Purpose District formed under:

- **RCW 70.05** Local Health Departments, Boards, Officers – Regulations
- **RCW 70.46** Health Districts
- **Kitsap County Code Chapter 9.52** Kitsap Public Health District

*Kitsap Public Health District was officially formed in November 1947*



[kitsappublichealth.org](https://kitsappublichealth.org)

4

## Accreditation



- Kitsap Public Health District has been accredited by the national Public Health Accreditation Board since 2015. Reaccreditation was approved in November 2024.
- This designation means our Health District has met rigorous quality standards and measures as a high-performing public health agency and is committed to continuous innovation and improvement.



[kitsappublichealth.org](https://kitsappublichealth.org)

5

## Health Board Membership 2025



### Electeds

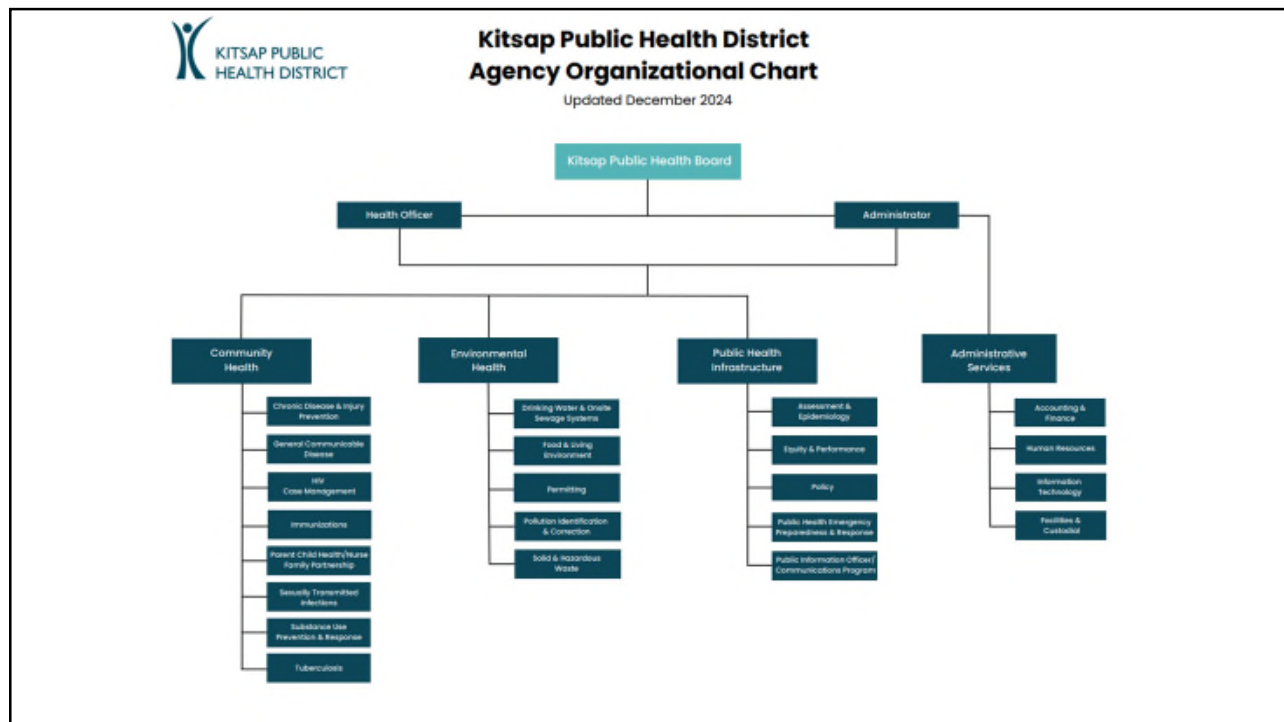
- Commissioner Rolfes (Vice Chair)
- Mayor Erickson
- Mayor Putaansuu
- Mayor Wheeler
- Deputy Mayor Mathews

### Nonelecteds

- Stephen Kutz, Suquamish Tribe
- Jolene Sullivan, Port Gamble S'Klallam Tribe
- Vacant, Healthcare
- Drayton Jackson, Consumer of Public Health
- Dr. Tara Sells (Chair), Other Community Stakeholder

[kitsappublichealth.org](https://kitsappublichealth.org)

6



7

# Strategic Plan Initiatives 2024-2030

**KITSAP PUBLIC HEALTH DISTRICT**

**Initiative 1**  
We stop the transmission of communicable diseases through prevention, early identification, and prompt and appropriate intervention.

**Initiative 2**  
We support well-being and resilience for people at every stage of life by focusing on prevention, harm reduction, promotion of factors that positively impact health, and reduction of the factors that negatively impact health.

**Initiative 3**  
We protect our community by promoting healthy environments and preventing unsafe environmental exposures.

**Initiative 4**  
We act as a trusted communicator, convener, strategist, and advocate to promote an integrated response to emergent, emergency, and ongoing public health issues.

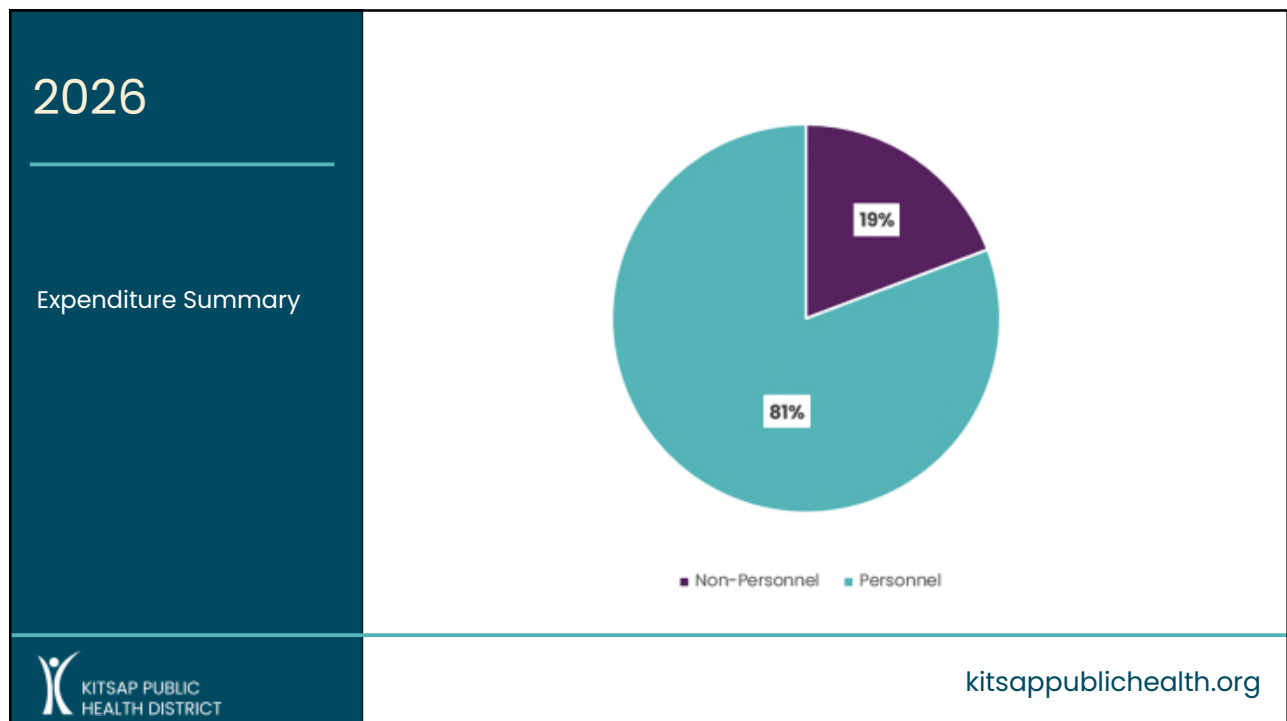
**Initiative 5**  
We use sound management principles to maintain a sustainable, effective, and inclusive agency that supports a diverse and engaged workforce.

[kitsappublichealth.org](https://kitsappublichealth.org)

8



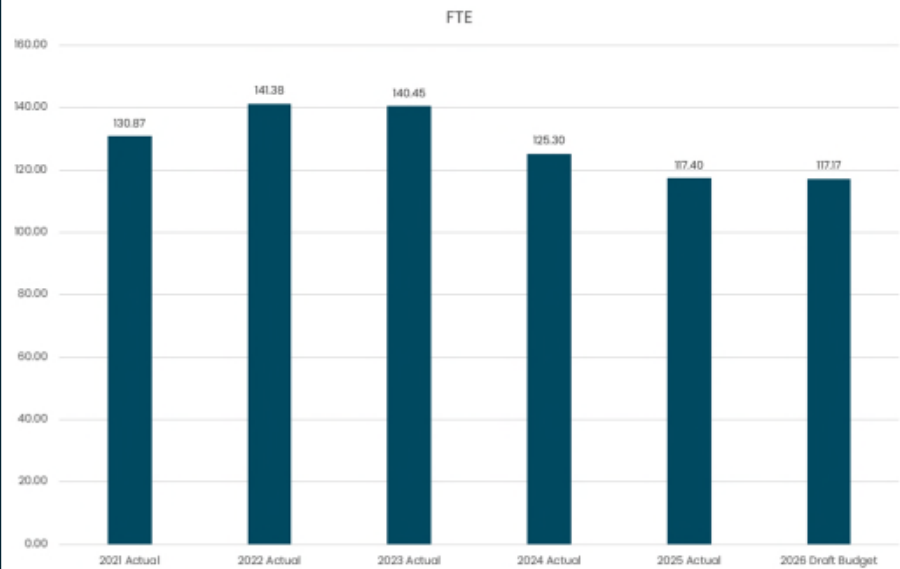
9



10

## 2021-Draft 2026

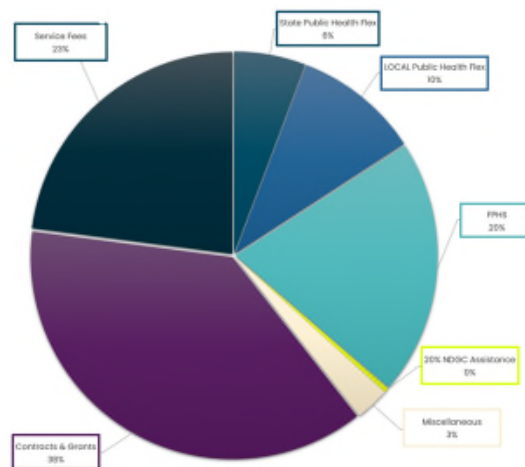
Staffing Full-Time  
Equivalents (FTE)



[kitsappublichealth.org](https://kitsappublichealth.org)

11

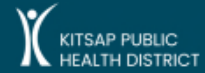
## Major Revenue Sources 2026



[kitsappublichealth.org](https://kitsappublichealth.org)

12

# 2026 Budget Request



	2024	2025	2026
General Public Health Funds	\$ 1,338,644	\$ 1,338,644	\$ 1,338,644
Tuberculosis Program *	101,436	101,454	100,767
NDGC Mortgage Assistance	38,897	38,879	39,566
Total	\$ 1,478,977	\$ 1,478,977	\$ 1,478,977

\* Counties are required to fund Tuberculosis investigation and treatment work per RCW 70.30.045

[kitsappublichealth.org](https://kitsappublichealth.org)

13



Image 1. Star Spangled Baby Event – Parent Child Health, 2025



Image 2. Pop Up Pertussis Clinic, 2025



Image 3. Farmers Market Back to School, 2025

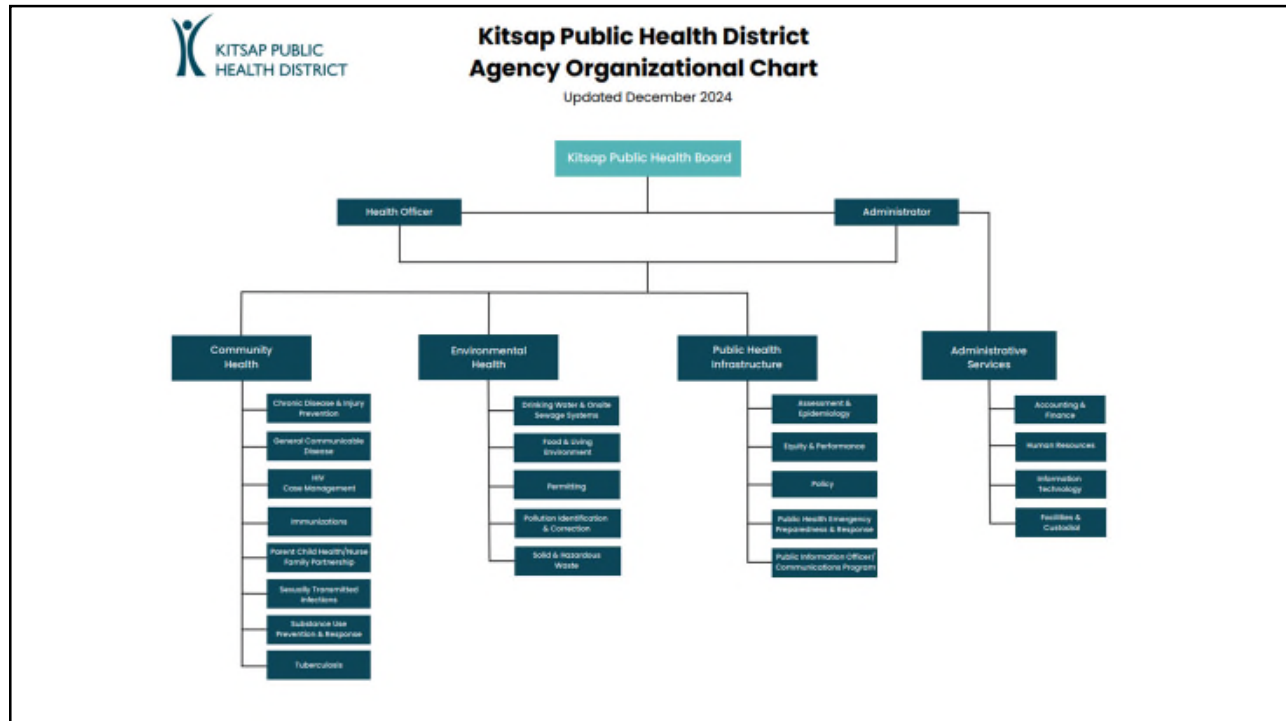
## Making a Difference in Kitsap KPHD Spotlights



[kitsappublichealth.org](https://kitsappublichealth.org)

14





15



16



## FTE By Division 2025

Division	2025
Community Health	38.8 FTE
Environmental Health	39 FTE
Administrative	23 FTE
Public Health Infrastructure	16.6 FTE
Totals	117.40 FTE



[kitsappublichealth.org](https://kitsappublichealth.org)

17

## Case Management Teams

HIV Case Management  
*Lifelong access*

TB Case Management  
*To treatment completion*

HCV Case Management (cases lost to follow-up)  
*To treatment completion*

Nurse Family Partnership  
*Prenatal to the child's 2<sup>nd</sup> birthday*

Blood Lead (Pb) Level Case Management  
*To treatment and source discovery completion*

Gonorrhea/Syphilis (cases lost to follow-up)  
*To treatment completion*

Access to Care – Warm Handoffs  
*Pregnant persons*  
*Families seeking services for children*  
*Families seeking infant resources*

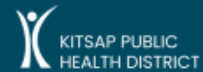


Sources:

[kitsappublichealth.org](https://kitsappublichealth.org)

18

# Measles and Pertussis



The Okanogan Health District (OHD) is reporting cases of pertussis, commonly known as whooping cough, have more than tripled in a short time.

The district is reporting 86 cases as of March 22, a sharp increase from 17 cases two weeks earlier.

The health district confirmed its first case of this outbreak on February 14 at a local school.

<https://kpo.com/whooping-cough-1560/>

**King County**  
<https://kingcounty.gov/about-public-health/news>

## Fifth case of measles in Washington state identified in a King

This is the fifth case of measles in Washington state in 2025, three of which have been infants. In addition, Public Health – Seattle & King County responded to two other

KIRO 7 News Seattle

## Washington sees massive spike in whooping cough cases: 25% of cases from The Puget Sound

This is just the tip of the iceberg. We're starting to see the impact of waning immunization uptake in pertussis."

Nov 8, 2024

Forbes 1d on MSN

## Measles Updates: 800 Cases in U.S. As Majority Of Outbreak Remains In Texas

There have been 800 confirmed cases of measles across 25 states so far this year, according to the latest update from the CDC ...

THE OKLAHOMAN

## Oklahoma school closes due to whooping cough: What is pertussis? Is there an outbreak?



## Boise schools warn of 'widespread' whooping cough. Idaho cases make massive jump

By Angela Palermo

Updated January 7, 2025 1:14 PM

Idaho Statesman

The New York Times 1d

## Measles Surge in Southwest Is Now the Largest Single Outbreak Since 2000

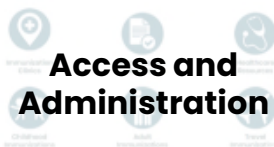
Growing case numbers suggest that the national total will surpass that seen during the last large outbreak in 2019.



[kitsappublichealth.org](https://kitsappublichealth.org)

19

# Promoting and Supporting Immunizations



## Access and Administration

- Coordinate clinics with community partners
- Support Vaccine for Children providers
- Addressing access issues
- Limited vaccine administration



## Immunization campaigns



## Working with Schools

- Regular connection with health services teams
- Immunization messaging for students and families
- Back to School clinic coordination
- WAIIS school module onboarding

Sources: [www.healthykitsap.org](https://www.healthykitsap.org)


FPHS Supported

[kitsappublichealth.org](https://kitsappublichealth.org)


20

# Chronic Disease and Injury Prevention Program


*KPHD coordinates with local organizations and the community to promote safety and prevent injuries in Kitsap county.*



**Identification**



**Review**



**Prevention**

## Muerte súbita inesperada del lactante (SUID)

en el condado de Kitsap

**¿Qué es la muerte súbita inesperada del lactante (SUID)?**  
La muerte súbita inesperada del lactante (SUID) ocurre cuando un bebé menor de un año fallece repentinamente sin una causa aparente inmediata. Suele ocurrir mientras el bebé duerme.

**¿Con qué frecuencia sucede esto?**  
Desde 2021, se ha observado un aumento constante de casos de SUID. Más de 3600 bebés murieron por SUID en Estados Unidos en 2022. En el estado de Washington, 74 bebés de entre 100 (100) nacimientos murieron por SUID. En 2024, cinco bebés murieron por SUID en el condado de Kitsap.

**No existe una forma garantizada de prevenir el SUID, pero usted puede ayudar a reducir el riesgo.**  
A veces, la muerte súbita inesperada (SUID) ocurre porque los bebés se estrangulan accidentalmente con mantas o juguetes, se asfixian con sus regañalinas o sus padres se duermen sobre ellos mientras duermen. Hay maneras de ayudar a prevenir estas tragedias.

**Cree un área de dormir segura recordando:**

**Solo**


- Los bebés deben dormir solos, sin otras personas o su cuna.
- Pueden compartir la habitación con su bebé, pero no compartas su cama.

**De espaldas**

- Coloque siempre a su bebé boca arriba cuando duerma.
- Si pueden darse la vuelta solos (boca arriba y boca abajo), está bien dejar que se den la vuelta. Pero siempre colóquelos boca arriba primero.

**En una cuna**

- No coloque nada más en la cuna.
- No lleve nada, como un monitor o un móvil, a la cuna.
- Coloque a su bebé sobre un colchón firme y plano con una sábana ajustada.




**Deje de usar tabaco**  
El bajo peso al nacer puede aumentar el riesgo de muerte súbita del lactante (SUID). Si un padre fuma, existe una mayor probabilidad de que su bebé nazca con bajo peso. Visite [KitsapPublicHealth.org/tobacco](http://KitsapPublicHealth.org/tobacco) para encontrar recursos para dejar de fumar.

**Hable con su proveedor de atención médica**  
Hay mucho que aprender como padre primerizo. Hable con su profesional de la salud sobre el SUID y cómo proteger a su bebé. Encuentre atención médica gratuita o de bajo costo en [Hesive.org](http://Hesive.org).


¿Tiene preguntas? Envíe un correo electrónico a [info@kitsappublichealth.org](mailto:info@kitsappublichealth.org)      Obtenga más información en [HealthyChildren.org/kitsap](http://HealthyChildren.org/kitsap)

21



**KITSAP PUBLIC HEALTH DISTRICT**

# Environmental Health Division



22

11

## FTE By Division 2025

Division	2025
Community Health	38.8 FTE
Environmental Health	39 FTE
Administrative	23 FTE
Public Health Infrastructure	16.6 FTE
Totals	117.40 FTE



kitsappublichealth.org

23

## Built Environment

- Data and GIS Mapping
- Active Transport Infrastructure
- Urban Greenery
- Complete Streets/Safe Routes to School



### NATURAL ENVIRONMENT

#### AIR QUALITY MONITORING

Puget Sound Clean Air Agency monitored **one active air quality station location** in Kitsap (located at 3250 Spruce Ave, Bremerton).

In 2021, Kitsap enjoyed "good" air quality for 98% of the year.



#### CARBON EMISSIONS

From 2015 to 2019, **Kitsap County increased overall emissions** by 16%. Emission increases were primarily driven by tree loss, fossil fuel-based electricity, and population growth.



### BUILT ENVIRONMENT

In a 2022 Kitsap Transit survey, respondents ranked their **top preferred transit service investments** as:



**30-minute service** on most routes (60%)



**New bus routes** (49%)



**New ferry route(s)** (52%)



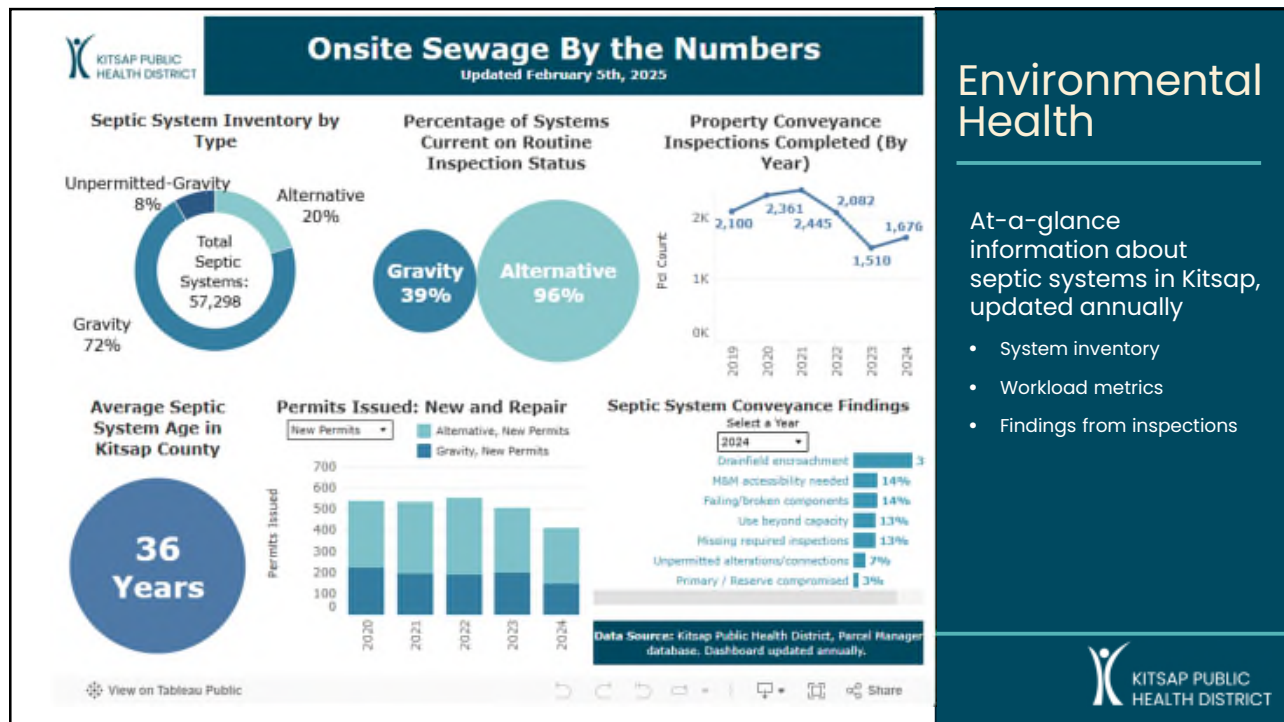
**High-capacity transit** (49%)



In 2018, 31% of **8th graders in Kitsap** reported **walking or biking to school** one or more days a week on average, which was lower than the percentage of Washington 8th graders overall (38%).

2023 Kitsap Community Health Assessment

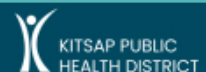
24



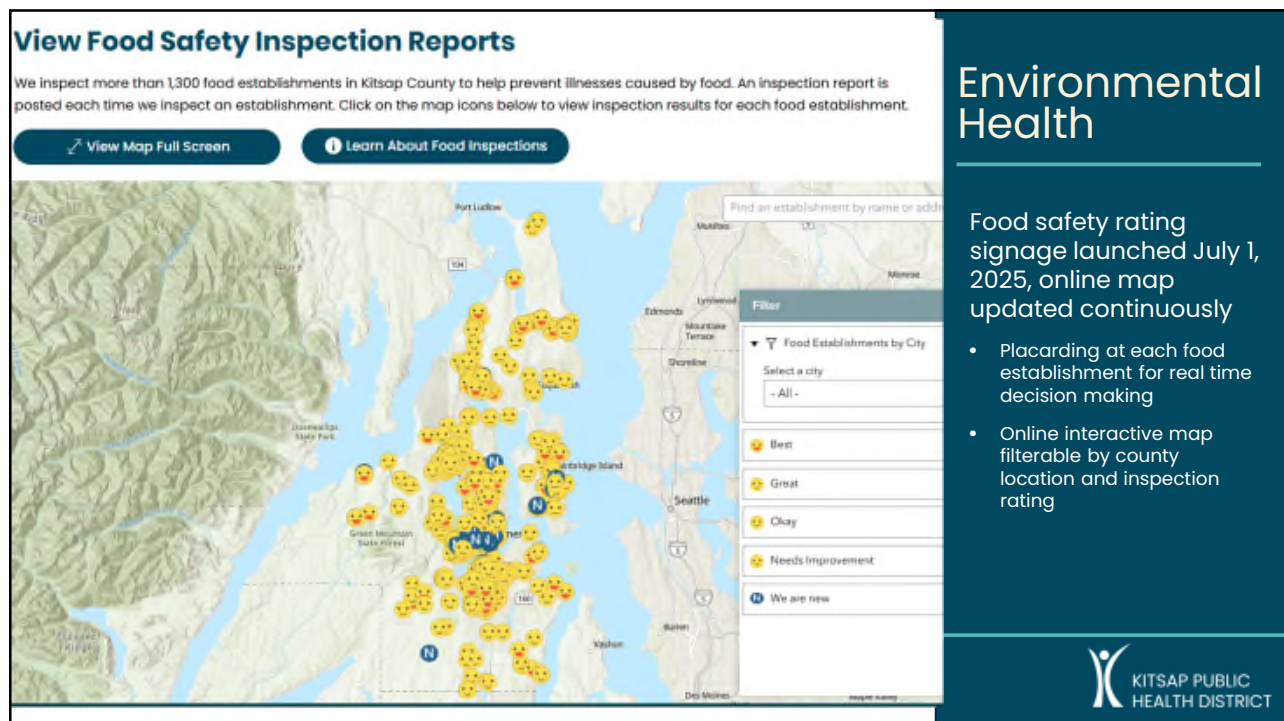
## Environmental Health

At-a-glance information about septic systems in Kitsap, updated annually

- System inventory
- Workload metrics
- Findings from inspections



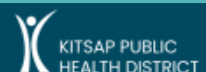
25



## Environmental Health

Food safety rating signage launched July 1, 2025, online map updated continuously

- Placarding at each food establishment for real time decision making
- Online interactive map filterable by county location and inspection rating



26



## Public Health Infrastructure Division



27

## FTE By Division 2025

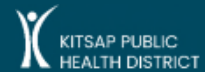
Division	2025
Community Health	38.8 FTE
Environmental Health	39 FTE
Administrative	23 FTE
Public Health Infrastructure	16.6 FTE
Totals	117.40 FTE


[kitsappublichealth.org](http://kitsappublichealth.org)

28



# How we communicate



**kitsappublichealth.org**



**Email/Text Bulletins**  
*kitsappublichealth.org/subscribe*



**Social Media & Video**



**Printed Materials**



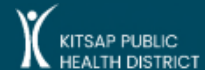
**Outreach Events**



**And more!**  
*Ads, news media, etc.*

29

# Water Quality Report



- **Communications support:**
  - Transformed a 160-page PDF report into an interactive webpage integrating data maps, charts, video, and photos.



[Water Quality Reports | Kitsap Public Health](#)



[kitsappublichealth.org](https://kitsappublichealth.org)

30



# Extreme Weather Messaging

Wildfire smoke and hot weather can make you sick.  
Take extra care when the weather is smoky or hot.

#### COOLING ON CLEAN AIR CENTERS

May be open on days when bad air quality or extreme heat is expected.  
Check for updates by calling 211.

211

Sign up for alerts at [kitsapnews.com](http://kitsapnews.com), [radio.kdey.com](http://radio.kdey.com) and [publicinfo.kitsap.gov/1322](http://publicinfo.kitsap.gov/1322).

#### EL MUNDO DE LOS P GENERAL PUEBLO I

Don't ignore symptoms  
caused by smoke or  
heat, a means to get  
an emergency contact

#### GET MEDICAL HELP

CALL 911 if your symptoms are severe.

#### Protect yourself from smoke:

Stay indoors as much as you can.  
Seal gaps around windows and  
doors, and keep them closed. Use  
an air filter if you have one.  
Use fans on air conditioning (AC)  
to cool your home. Set AC to  
"recirculate".  
Learn more: [publicinfo.kitsap.gov/1322](http://publicinfo.kitsap.gov/1322)

#### Protect yourself from heat:

Stay in a cool, shaded space as  
much as you can. Use fans or air  
conditioning to cool your home.  
Open windows at night to let in cool  
air. Cover windows during the day.  
Drink plenty of water, even when  
you are not thirsty.  
For local weather forecasts call 360-536-4087

#### Data Dashboards

Smog: Air Quality & Asthma: Alerts to  
Kitsap Emergency Departments

View Dashboard

Heat: Temperature & Heat Related  
Alerts to Emergency Departments

View Dashboard

#### Wildfire Smoke

#### Checking Air Quality

#### Extreme Heat

[kitsappublichealth.org](http://kitsappublichealth.org)





# THANK YOU!

Yolanda Fong – [yolanda.fong@kitsappublichealth.org](mailto:yolanda.fong@kitsappublichealth.org)  
Melissa Laird – [finance.manager@kitsappublichealth.org](mailto:finance.manager@kitsappublichealth.org)



[kitsappublichealth.org](http://kitsappublichealth.org)