

PROFILE	
NO.	DATE

REVISIONS	
NO.	DATE

PLAN	
NO.	DATE

**GENERAL NOTES**

- FOR ALL AIR/VACS SEE CONSTRUCTION DWG. NO. 1 IN PROJECT MANUAL OPERATING RANGES SHOWN IN PROFILES.
- ALL PIPE SHALL BE INSTALLED AS SHOWN. ADJUST LOCATION AS DIRECTED BY THE ENGINEER AT THE TIME OF CONSTRUCTION TO AVOID ANY CONFLICT WITH OTHER UTILITIES. REFER TO ARTICLE 17 OF THE GENERAL CONDITIONS IN THE PROJECT MANUAL REGARDING EXISTING UTILITIES SHOWN HEREON. THE CONTRACTOR SHALL BE RESPONSIBLE FOR HAVING ACTUAL UTILITY LOCATIONS MARKED PRIOR TO EXCAVATION UNDER THIS CONTRACT.
- PIPELINE PROFILES PROVIDE FOR FOUR (4) FOOT MINIMUM COVER, INVERTS OF EXISTING MAJOR UTILITIES AND CULVERTS SHALL BE CHECKED SO GRADE OF FORCE MAIN CAN BE ADJUSTED TO AVOID CONFLICT WITH EXISTING UTILITIES AND CULVERTS IN A MANNER TO MAINTAIN UPWARD SLOPE BETWEEN PLANNED LOW POINTS AND AIR VENTING ASSEMBLIES.
- FORCE MAIN DISTANCES MEASURED ALONG  $\phi$  OF PIPE.

**LEGEND**

**EXISTING UTILITIES:**

- X— SAN. SEWER
- S— STORM SEWER OR CULVERTS
- G— UNDERGROUND GAS
- W— WATER
- T— TELEPHONE
- P— POWER

**NEW CONSTRUCTION:**

- O— GRAVITY SEWER
- F— FORCE MAIN w/AIR/VAC
- M— FORCE MAIN w/MH.
- B— BASEMENT NO.
- C— CONTRACT LIMITS

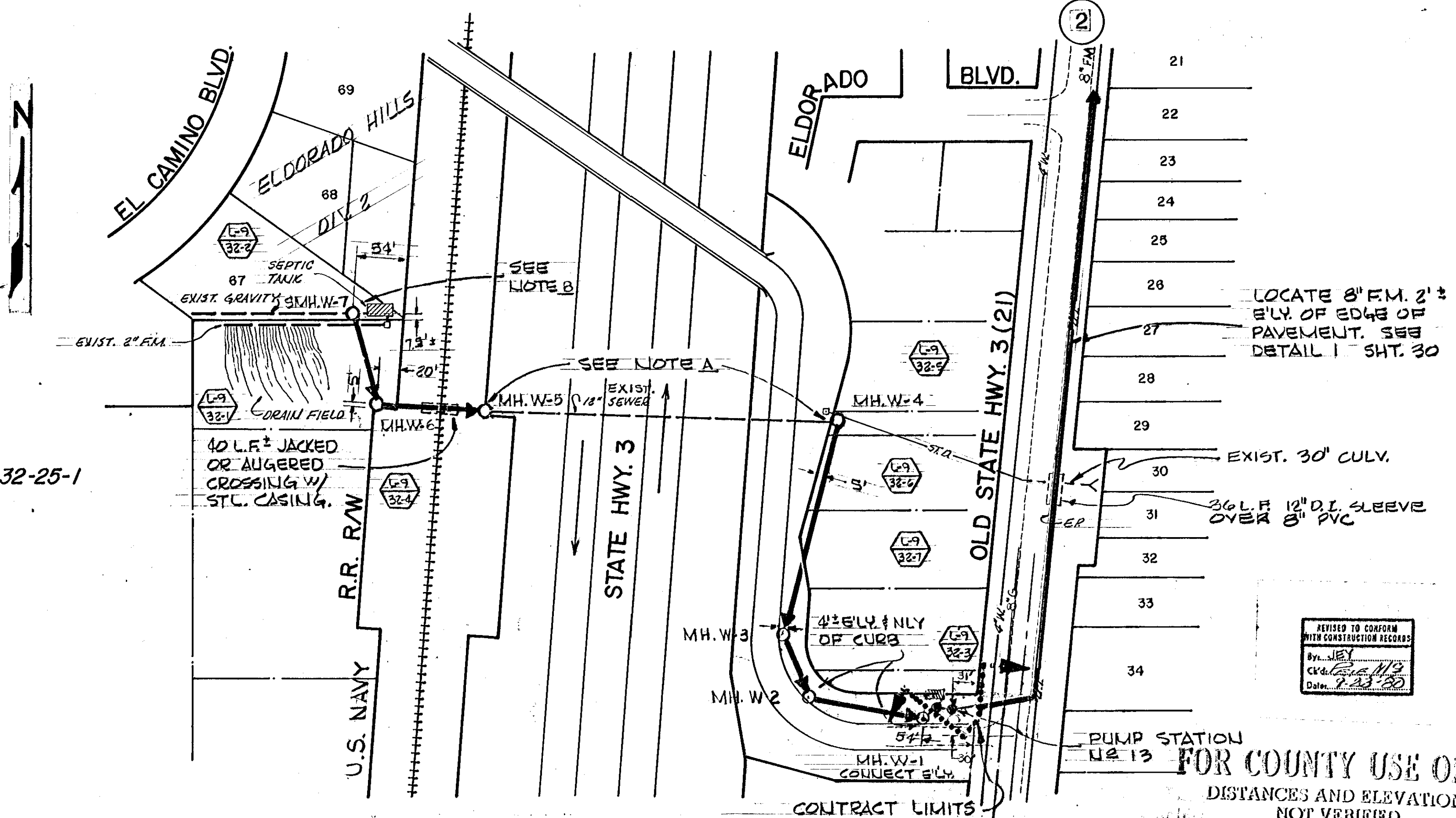
**Professional Engineer Seals:**

- GARRY W. RICE, REGISTERED PROFESSIONAL ENGINEER
- WALTER L. BERSCHNER, REGISTERED PROFESSIONAL ENGINEER

**NOTE A: ELDORADO HILLS CONNECTION NOS. 2 & 3** - CONTRACTOR SHALL VERIFY LOCATION & DEPTH OF EXISTING SEWER LINE & TEST PRIOR TO CONSTRUCTION. INSTALL M.H. & MAKE CONNECTION TO EXISTING SEWER.

**NOTE B: ELDORADO HILLS CONNECTION NO. 1** - INSTALL TYPE IV-B MH. OVER EXISTING 8" GRAVITY. DIVERT FLOW INTO PROPOSED GRAVITY LINE & PLUG EXISTING 8" GRAVITY E.L.Y. SIDE OF MH. WHEN SYSTEM IS COMPLETE & OPERABLE TO TREATMENT PLANT.

DELETED FROM CONTRACT



Job No. 4464-05-98

Scale: Vert. 1" = 10', Horiz. 1" = 100'

Designed by: [Signature]

Drawn by: [Signature]

Checked by: [Signature]

Approved by: [Signature]

Date: 9-8-77

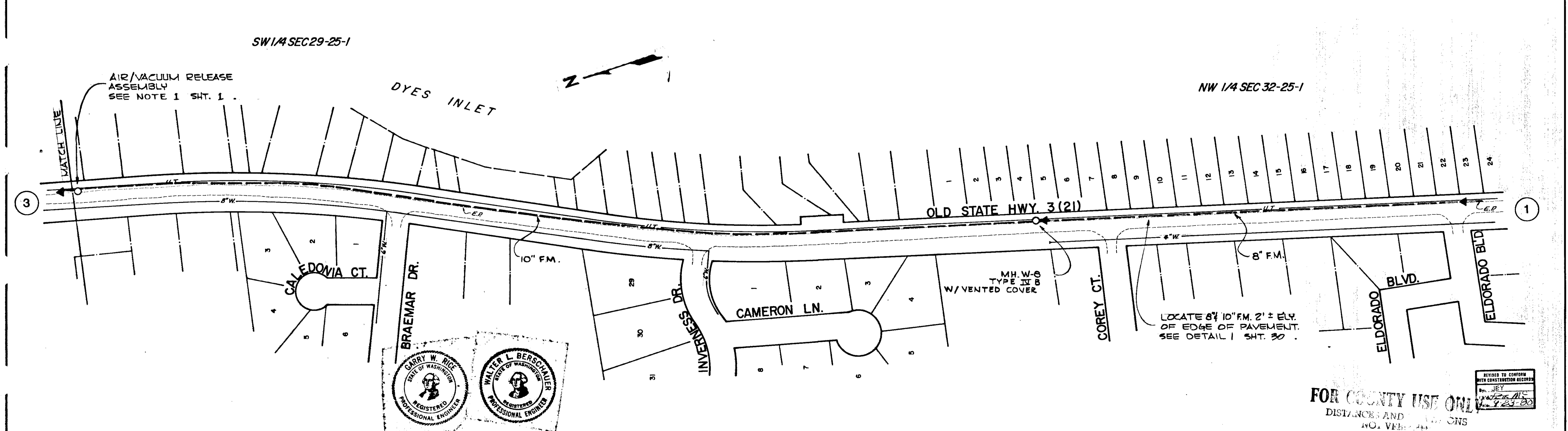
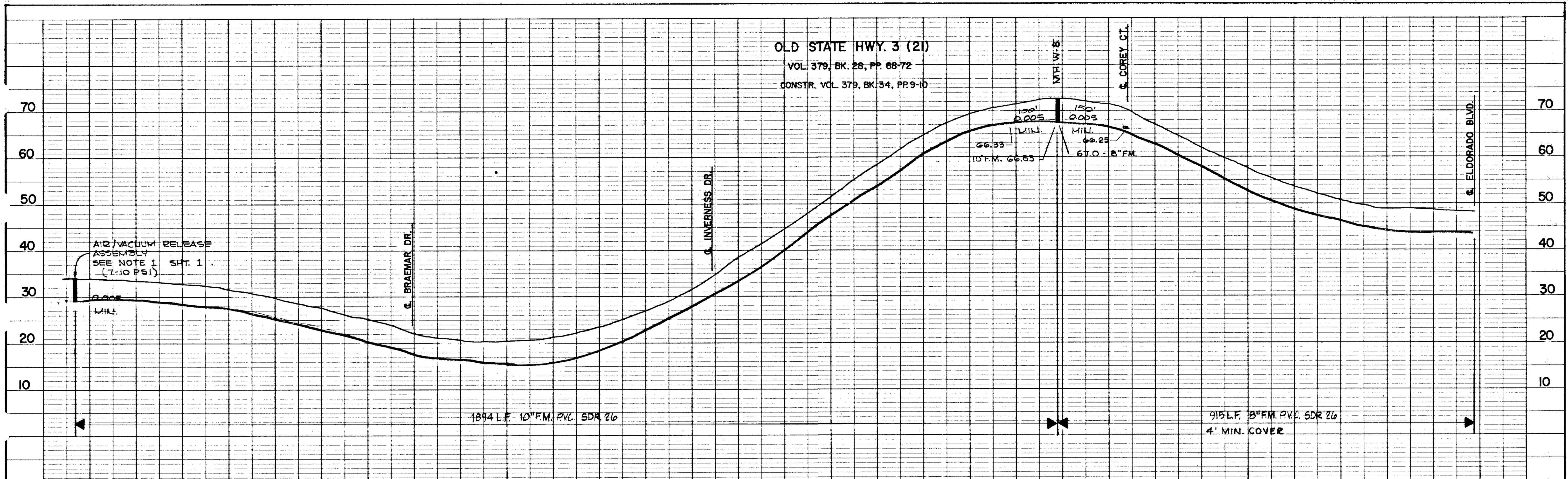
**URS COMPANY**  
A Professional Services Organization  
Seattle, Washington

**KITSAP COUNTY**  
CENTRAL KITSAP WASTEWATER FACILITIES

**INTERCEPTOR SEWERS**  
PLAN & PROFILE  
CONTRACT I

SHEET 1 OF 30

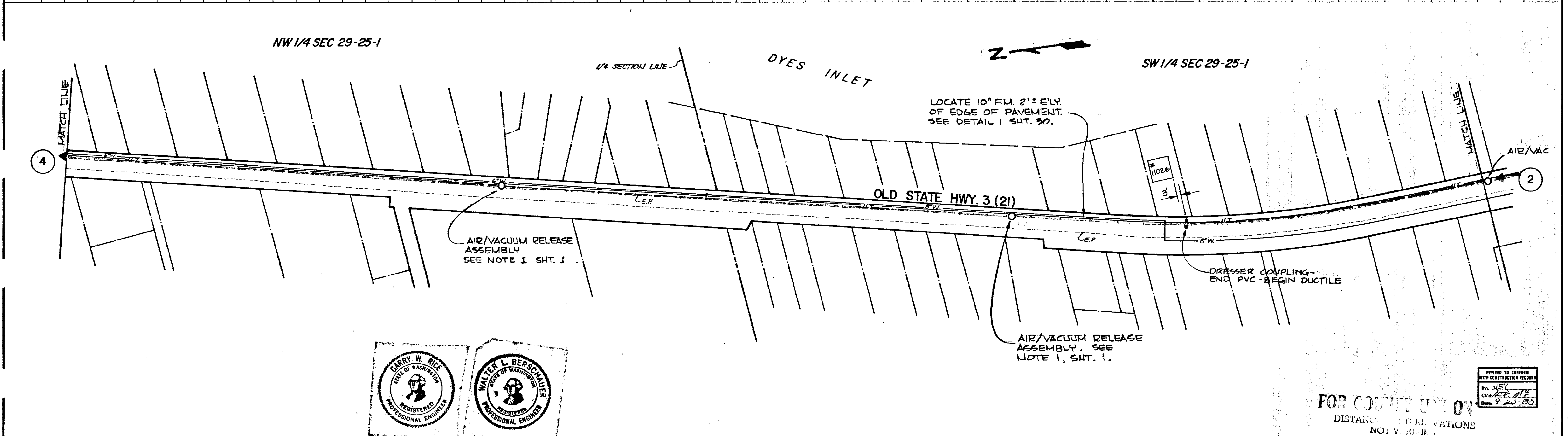
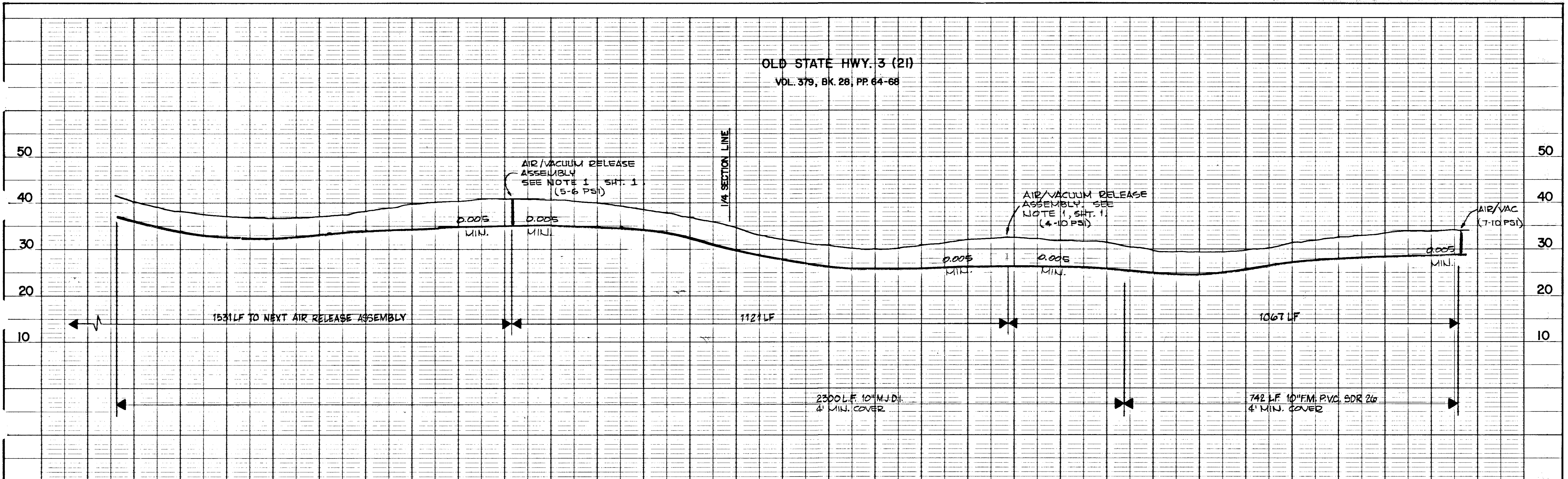
3.611-1



No.	DATE	BY	REVISION	Job No. 4464-05-98	Designed by <i>LR</i>	Approved by <i>WLS</i>	URS COMPANY A Professional Services Organization Seattle, Washington	KITSAP COUNTY CENTRAL KITSAP WASTEWATER FACILITIES	INTERCEPTOR SEWER PLAN & PROFILE CONTRACT I	SHEET 2 30
				SCALE Vert. 1" = 10' Horiz. 1" = 100'	Drawn by <i>CLW</i>					

PROFILE		PLAN	
No.	DATE	No.	DATE
1	1/15/77	1	1/15/77
2	1/15/77	2	1/15/77
3	1/15/77	3	1/15/77
4	1/15/77	4	1/15/77
5	1/15/77	5	1/15/77
6	1/15/77	6	1/15/77
7	1/15/77	7	1/15/77
8	1/15/77	8	1/15/77
9	1/15/77	9	1/15/77
10	1/15/77	10	1/15/77
11	1/15/77	11	1/15/77
12	1/15/77	12	1/15/77
13	1/15/77	13	1/15/77
14	1/15/77	14	1/15/77
15	1/15/77	15	1/15/77
16	1/15/77	16	1/15/77
17	1/15/77	17	1/15/77
18	1/15/77	18	1/15/77
19	1/15/77	19	1/15/77
20	1/15/77	20	1/15/77
21	1/15/77	21	1/15/77
22	1/15/77	22	1/15/77
23	1/15/77	23	1/15/77
24	1/15/77	24	1/15/77

FOR COUNTY USE ONLY  
DISTANCES AND  
NO. VERT. CURVES



PROFILE	
NO. 3.611-3	DATE 1/27/77
BY J.E.V.	DATE 1/27/77
BY J.E.V.	DATE 1/27/77
BY J.E.V.	DATE 1/27/77
BY J.E.V.	DATE 1/27/77

PLAN	
NO. 3.611-3	DATE 1/27/77
BY J.E.V.	DATE 1/27/77
BY J.E.V.	DATE 1/27/77
BY J.E.V.	DATE 1/27/77
BY J.E.V.	DATE 1/27/77

PLAN	
NO. 3.611-3	DATE 1/27/77
BY J.E.V.	DATE 1/27/77
BY J.E.V.	DATE 1/27/77
BY J.E.V.	DATE 1/27/77
BY J.E.V.	DATE 1/27/77



RETURNED TO COUNTY WITH CONSTRUCTION RECORD  
By: J.E.V.  
Checked: J.E.V.  
Date: 9-23-80

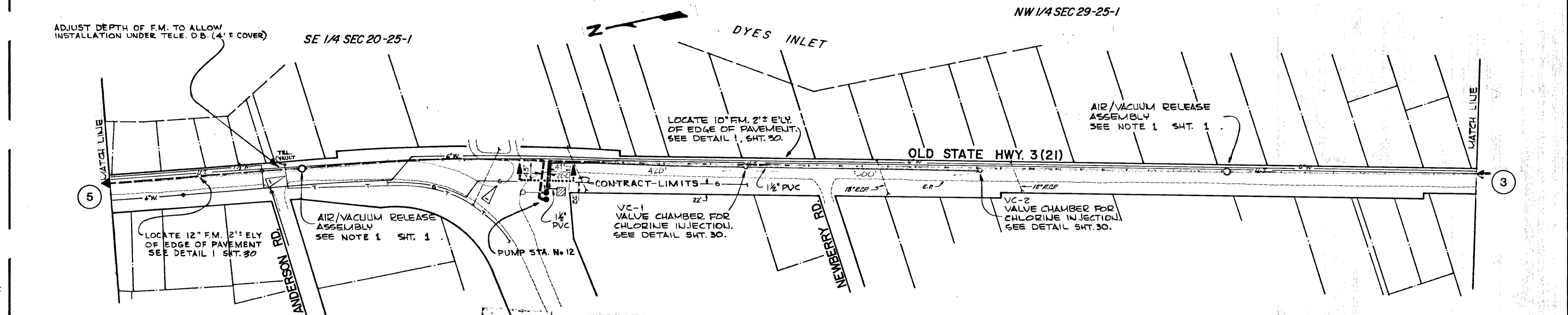
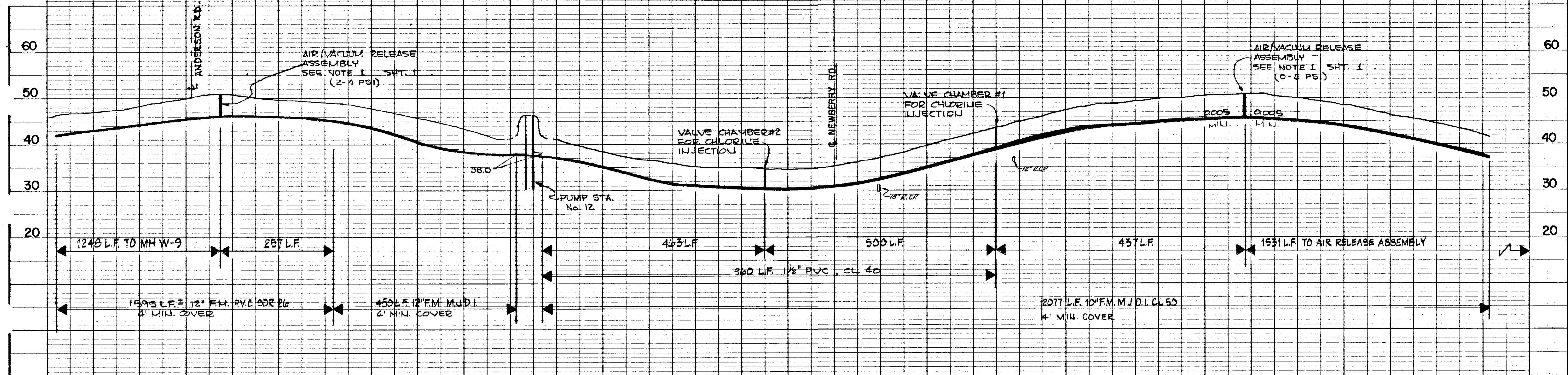
FOR COUNTY USE ONLY  
DISTANCE TO ELEVATIONS  
NOT TO SCALE

No.	DATE	BY	REVISION	Job No. 4464-05-98	Designed by G.R.	Approved by J.E.V.	Date 5-6-77	<b>URS COMPANY</b> A Professional Services Organization Seattle, Washington	<b>KITSAP COUNTY</b> CENTRAL KITSAP WASTEWATER FACILITIES	INTERCEPTOR SEWERS PLAN & PROFILE CONTRACT I	SHEET 3 30
				SCALE Vert. 1" = 10' Horz. 1" = 100'	Drawn by B.W.						

3.611-3

3.611-3

OLD STATE HWY 3(21)  
VOL. 379, BK. 28, PP. 58-64



PROFILE		PLAN	
NO.	DATE	NO.	DATE
1	1/1/77	1	1/1/77
2	1/1/77	2	1/1/77
3	1/1/77	3	1/1/77
4	1/1/77	4	1/1/77
5	1/1/77	5	1/1/77
6	1/1/77	6	1/1/77
7	1/1/77	7	1/1/77
8	1/1/77	8	1/1/77
9	1/1/77	9	1/1/77
10	1/1/77	10	1/1/77

3.611-4



**FOR COUNTY USE ONLY**  
DISTANCE AND ELEVATION NOT VALID

REVISED TO CONFORM WITH CONSTRUCTION RECORDS  
BY: J.E.V.  
DATE: 9-2-80

10-14-77 C.J.N. ADDED UNDERGROUND UTILITIES.		Job No. 4464-05-98		Designed: <i>W.L.</i>		Approved by: <i>[Signature]</i>		URS COMPANY A Professional Services Organization Seattle, Washington		KITSAP COUNTY CENTRAL KITSAP WASTEWATER FACILITIES		INTERCEPTOR SEWERS PLAN & PROFILE CONTRACT I		SHEET 4	
SCALE Vert. 1" = 10' Horiz. 1" = 100'		Checked by: <i>W.L.S.</i>		Date: 5-6-77										30	

3.611-4