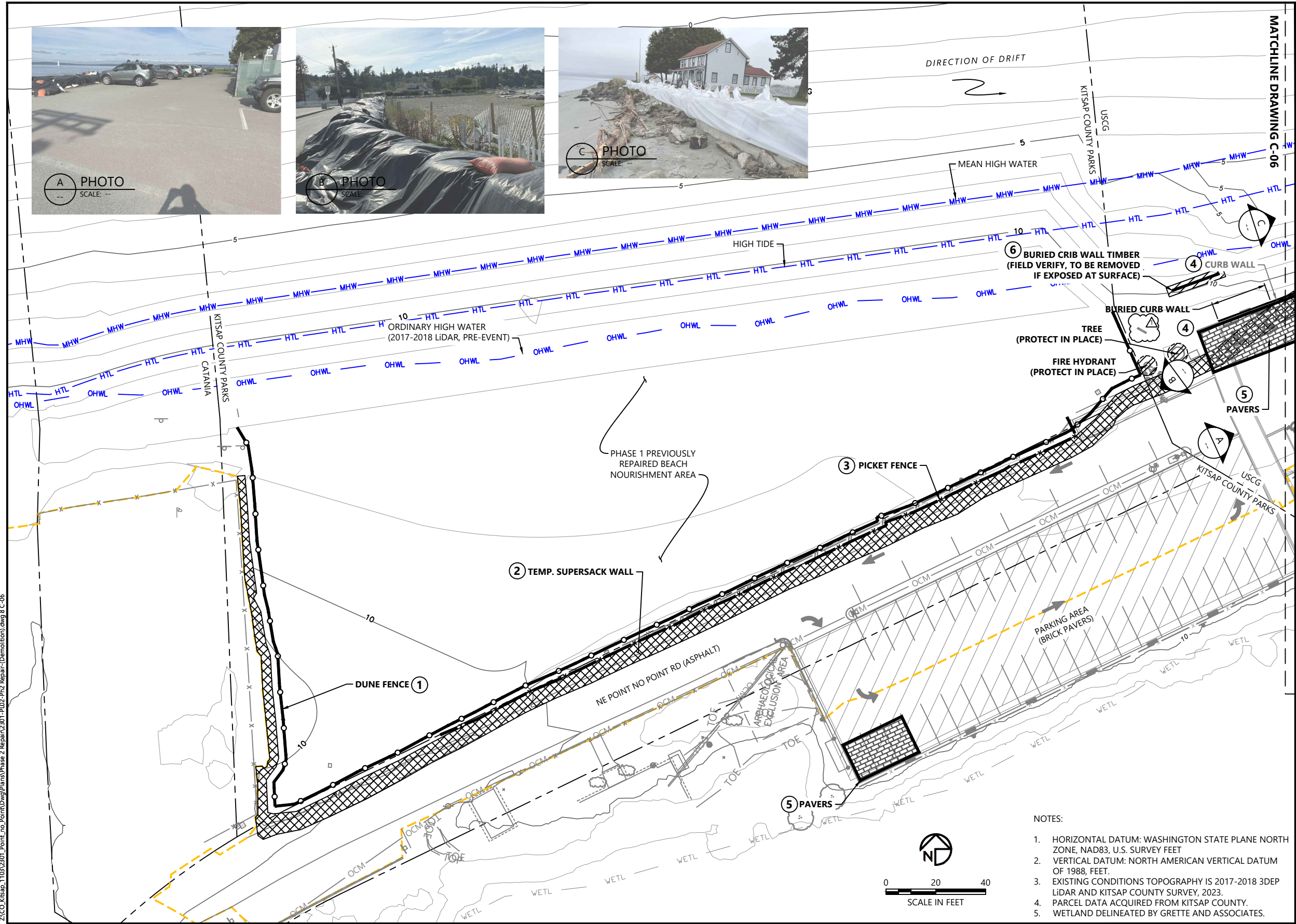




DESIGNED BY: G.CURTISS
DRAWN BY: E.PIPKIN
CHECKED BY: J.ALLEN
APPROVED BY: J.COTE
SCALE: AS NOTED
DATE: MAY 2025

SHEET # **3** OF **19**

Jul 02, 2025 1:56pm bluecoast Z:\CO Kitsap_1103\2301_Point_no_Point\Drawings\Phase 2 Repair\2301_P02-ph2 Repair-Demolition.dwg 8 C-06



- LEGEND:
- 5' CONDITIONS CONTOURS (1' & 5' INTERVAL)
 - PROPERTY BOUNDARY
 - COUNTY SURVEY EXTENTS
 - OCM OVERHEAD COMMUNICATIONS LINE
 - OP OVERHEAD POWER LINE
 - OHWL ORDINARY HIGH WATER LINE
 - HTL HIGH TIDE LINE (10.2' NAVD88, PRE-STORM EVENT, 2017)
 - MHW MEAN HIGH WATER LINE (7.8' NAVD88, PRE-STORM EVENT, 2017)
 - WETL WETLAND
 - PARKING AREA
 - BOLLARD (REMOVE AND RELOCATE AS REQUIRED)
 - SIGN (REMOVE AND RELOCATE AS REQUIRED)
 - WATER VALVE
 - FIRE HYDRANT
 - COMMUNICATIONS PEDESTAL
 - MAILBOX
 - UTILITY POLE
 - COUNTY SET SURVEY SPIKE

- DEMOLITION LEGEND:
- 1 DUNE FENCE (REMOVE AND STOCKPILE FOR REUSE)
 - 2 SUPERSACKS (REMOVE SAND FOR REUSE AND DISPOSE OF BAGS OFFSITE)
 - 3 PICKET FENCE (REMOVE AND DISPOSE OF OFFSITE)
 - 4 CURB WALL (REMOVE AND DISPOSE OF OFFSITE; EXCAVATE SUBGRADE PER DETAIL 1, SHEET S-02)
 - 5 PAVERS (REMOVE AND STOCKPILE FOR USE; EXCAVATE SUBGRADE PER DETAIL 1, SHEET C-12)
 - 6 CRIB WALL TIMBER (ASSUMED BURIED, REMOVE IF EXPOSED AT SURFACE)
 - PROTECT IN PLACE
 - DEMOLITION PHOTO POINT (ARROW INDICATES PHOTO DIRECTION)

- NOTES:
- HORIZONTAL DATUM: WASHINGTON STATE PLANE NORTH ZONE, NAD83, U.S. SURVEY FEET
 - VERTICAL DATUM: NORTH AMERICAN VERTICAL DATUM OF 1988, FEET.
 - EXISTING CONDITIONS TOPOGRAPHY IS 2017-2018 3DEP LIDAR AND KITSAPO COUNTY SURVEY, 2023.
 - PARCEL DATA ACQUIRED FROM KITSAPO COUNTY.
 - WETLAND DELINEATED BY GRETTIE AND ASSOCIATES.

ONE INCH
AT FULL SIZE, IF NOT ONE
INCH SCALE ACCORDINGLY

PLAN INTENDED TO BE VIEWED
IN COLOR, ADJACENT BLOCK IS
"ORANGE"



REVISIONS					DESCRIPTION
REV	DATE	BY	APP'D		
1	6/30/25	EP	JC		ADDED IRRIGATION LINework; MODIFIED SIGN SYMBOLS

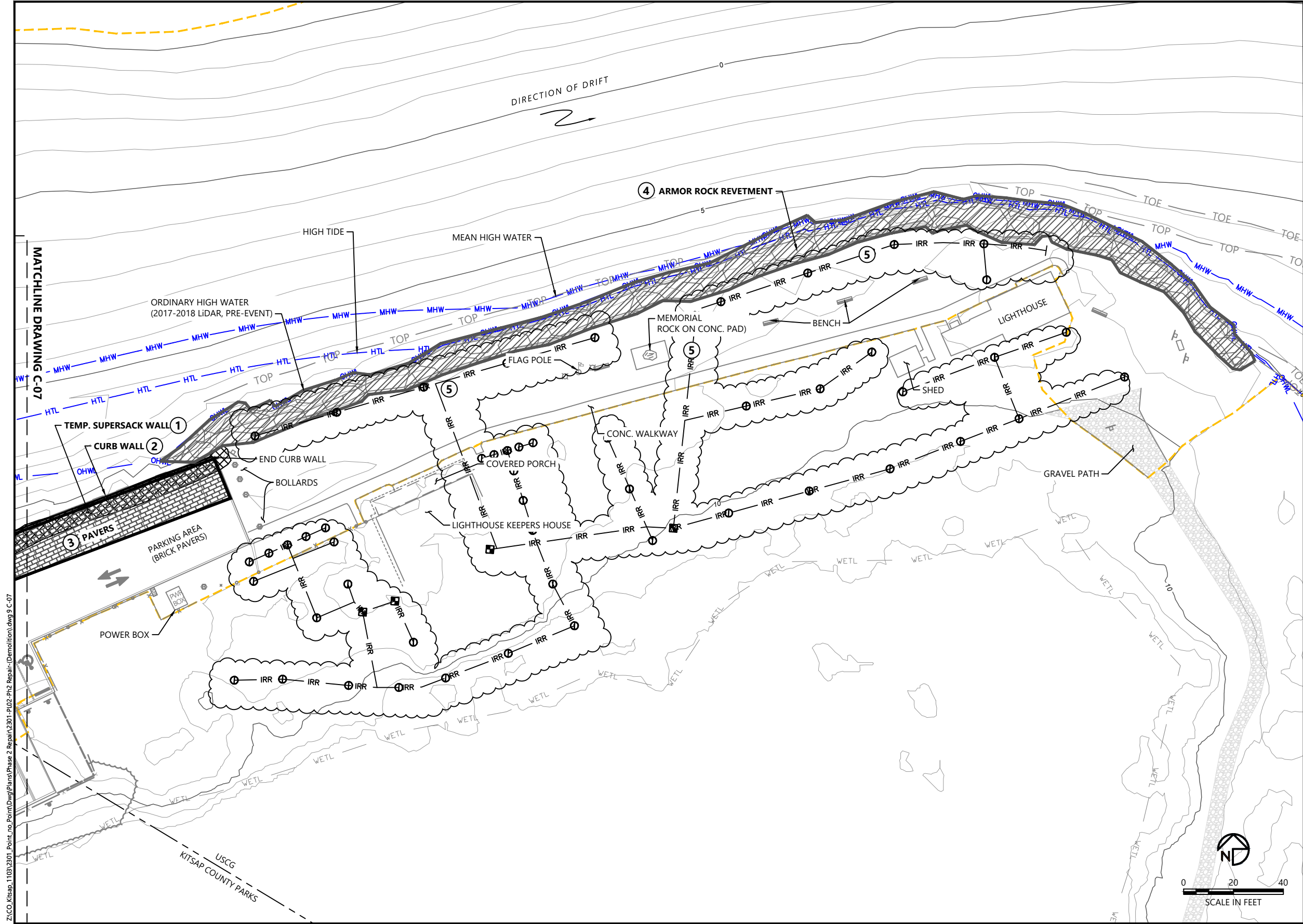
DESIGNED BY: G.CURTISS
DRAWN BY: E.PIKIN
CHECKED BY: J.ALLEN
APPROVED BY: J.COTE
SCALE: AS NOTED
DATE: MAY 2025

POINT NO POINT PHASE 2 RESTORATION AND REPAIR PROJECT

DEMOLITION AND EXCAVATION PLAN (1 OF 2)

C-06

SHEET # 8 OF 19



- LEGEND:
- 5' CONDITIONS CONTOURS (1' & 5' INTERVAL)
 - PROPERTY BOUNDARY
 - COUNTY SURVEY EXTENTS
 - OCM OVERHEAD COMMUNICATIONS LINE
 - OP OVERHEAD POWER LINE
 - OHWL ORDINARY HIGH WATER LINE
 - HTL HIGH TIDE LINE (10.2' NAVD88, PRE-STORM EVENT, 2017)
 - MHW MEAN HIGH WATER LINE (7.8' NAVD88, PRE-STORM EVENT, 2017)

- WETLAND
- PARKING AREA
- BOLLARD (REMOVE AND RELOCATE AS REQUIRED)
- SIGN (REMOVE AND RELOCATE AS REQUIRED)
- WATER VALVE
- FIRE HYDRANT
- COMMUNICATIONS PEDESTAL
- MAILBOX
- UTILITY POLE
- BENCH
- IRRIGATION CONTROL BOX
- IRRIGATION HEAD

- DEMOLITION LEGEND:
- 1 SUPERSACKS (REMOVE SAND FOR REUSE AND DISPOSE OF BAGS OFFSITE)
 - 2 CURB WALL (REMOVE AND DISPOSE OF OFFSITE; EXCAVATE SUBGRADE PER DETAIL 1, SHEET S-02)
 - 3 PAVERS (REMOVE AND STOCKPILE FOR USE; EXCAVATE SUBGRADE PER DETAIL 1, SHEET C-12)
 - 4 ARMOR ROCK REVETMENT (REMOVE AND STOCKPILE FOR REUSE OR DISPOSE OF OFFSITE; EXCAVATE SUBGRADE PER CROSS-SECTIONS G, H, I, J, SHEET C-11)
 - 5 REMOVE AND RELOCATE IRRIGATION AS REQUIRED; REPAIR DAMAGED IRRIGATION SYSTEM COMPONENTS AS REQUIRED

- NOTES:
- HORIZONTAL DATUM: WASHINGTON STATE PLANE NORTH ZONE, NAD83, U.S. SURVEY FEET
 - VERTICAL DATUM: NORTH AMERICAN VERTICAL DATUM OF 1988, FEET.
 - EXISTING CONDITIONS TOPOGRAPHY IS 2017-2018 3DEP LIDAR AND KITSAP COUNTY SURVEY, 2023.
 - PARCEL DATA ACQUIRED FROM KITSAP COUNTY.
 - WETLAND DELINEATED BY GRETTE AND ASSOCIATES.

ONE INCH
AT FULL SIZE, IF NOT ONE
INCH SCALE ACCORDINGLY

PLAN INTENDED TO BE VIEWED
IN COLOR, ADJACENT BLOCK IS
"ORANGE"

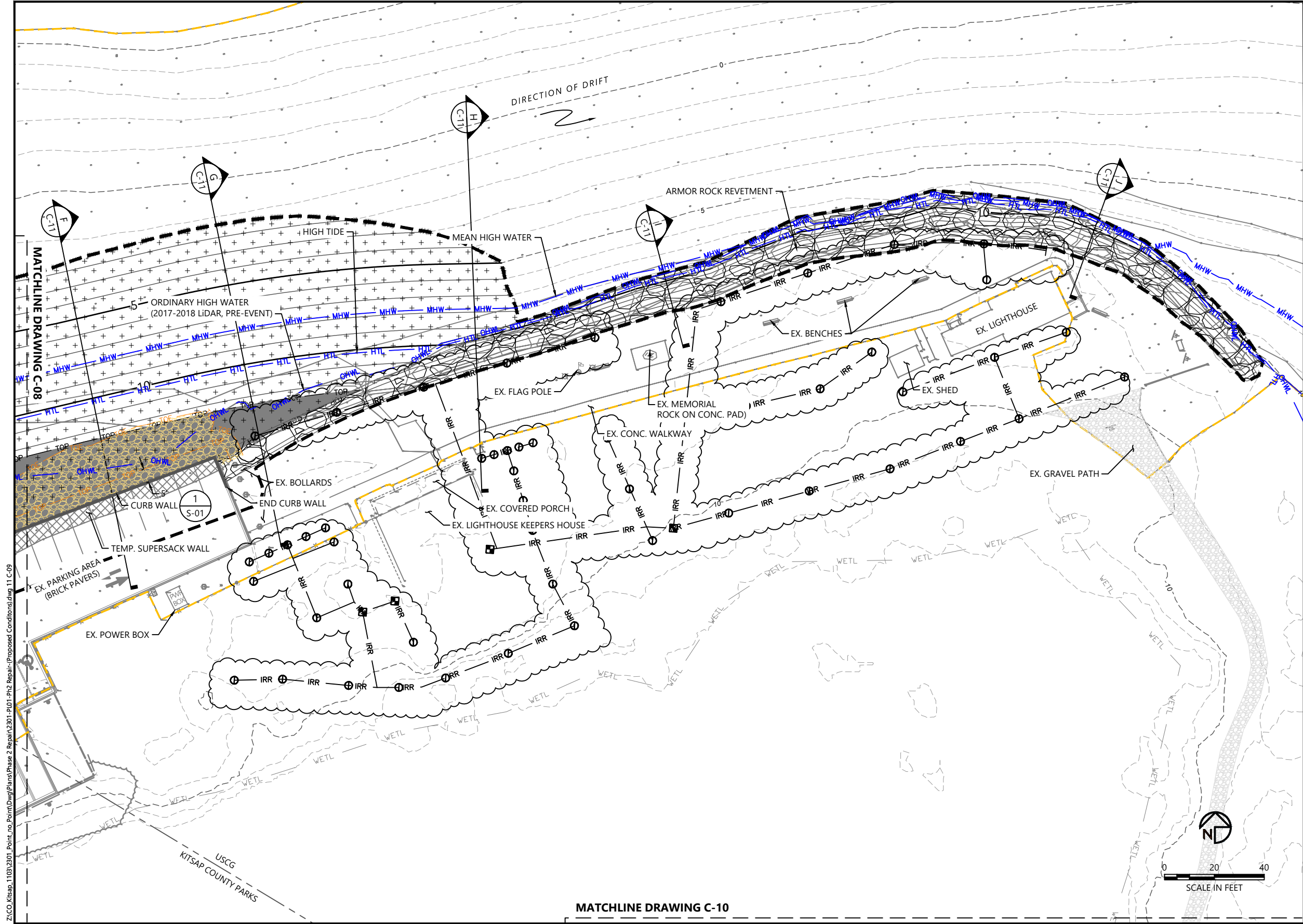
Jul 02, 2025 1:56pm bluecoast

Z:\CO Kitsap 1103\2001 Point no Point\Drawings\Phase 2 Repair\2301-Pl02-Pl2 Repair (Demolition) dwg 9 C-07



REVISIONS					DESCRIPTION
REV	DATE	BY	APP'D		
1	6/30/25	EP	JC		ADDED IRRIGATION LINENWORK; MODIFIED SIGN SYMBOLS

DESIGNED BY: G.CURTISS
DRAWN BY: E.PIPIKIN
CHECKED BY: J.ALLEN
APPROVED BY: J.COTE
SCALE: AS NOTED
DATE: MAY 2025



LEGEND:

- 5--- CONDITIONS CONTOURS (1' & 5' INTERVAL)
- 5— PROPOSED CONDITIONS CONTOURS (1' & 5' INTERVAL)
- GRADING LIMITS
- COUNTY SURVEY EXTENTS
- + + + + BEACH NOURISHMENT MATERIAL FILL
- REVTMENT REPAIR ARMOR ROCK
- FILL CREST (20' WIDE AT EL. +12.5')
- ROUNDED COBBLE TOE PROTECTION
- TOP TOP OF ROUNDED COBBLE TOE PROTECTION
- TOE TOE OF ROUNDED COBBLE TOE PROTECTION
- NEW CURB WALL
- GRADING WORKING POINT
- PROPERTY BOUNDARY
- OCM EXISTING OVERHEAD COMMUNICATIONS LINE
- OP EXISTING OVERHEAD POWER LINE
- OHWL ORDINARY HIGH WATER LINE
- HTL HIGH TIDE LINE (10.2' NAVD88, PRE-STORM EVENT, 2017)
- MHW MEAN HIGH WATER LINE (7.8' NAVD88, PRE-STORM EVENT, 2017)
- WETL EXISTING WETLAND
- EXISTING TEMP. SUPERSACK WALL
- EXISTING BOLLARD
- EXISTING SIGN
- EXISTING WATER VALVE
- EXISTING FIRE HYDRANT
- EXISTING COMMUNICATIONS PEDESTAL
- EXISTING MAILBOX
- EXISTING UTILITY POLE
- EXISTING BENCH
- IRRIGATION CONTROL BOX
- IRRIGATION HEAD

- NOTES:
- HORIZONTAL DATUM: WASHINGTON STATE PLANE NORTH ZONE, NAD83, U.S. SURVEY FEET
 - VERTICAL DATUM: NORTH AMERICAN VERTICAL DATUM OF 1988, FEET.
 - EXISTING CONDITIONS TOPOGRAPHY IS 2017-2018 3DEP LIDAR AND KITSAP COUNTY SURVEY, 2023.
 - PARCEL DATA ACQUIRED FROM KITSAP COUNTY.
 - WETLAND DELINEATED BY GRETTE AND ASSOCIATES.

ONE INCH
AT FULL SIZE, IF NOT ONE
INCH SCALE ACCORDINGLY

PLAN INTENDED TO BE VIEWED
IN COLOR, ADJACENT BLOCK IS
"ORANGE"

Jul 02, 2025 1:56pm bluecoast Z:\CO Kitsap 1103\2001 Point no Point\Drawings\Phase 2 Repair\2301-01-01-02 Repair (Proposed Conditions) dwg 11 C-09

BLUE COAST
ENGINEERING

REVISIONS				
REV	DATE	BY	APP'D	DESCRIPTION
1	6/30/25	EP	JC	ADDED IRRIGATION LINENWORK; MODIFIED SIGN SYMBOLS

DESIGNED BY: G.CURTISS

DRAWN BY: E.PIPIKIN

CHECKED BY: J.ALLEN

APPROVED BY: J.COTE

SCALE: AS NOTED

DATE: MAY 2025

POINT NO POINT PHASE 2 RESTORATION AND REPAIR PROJECT

GRADING AND MATERIALS PLAN (2 OF 3)

C-09

SHEET # 11 OF 19