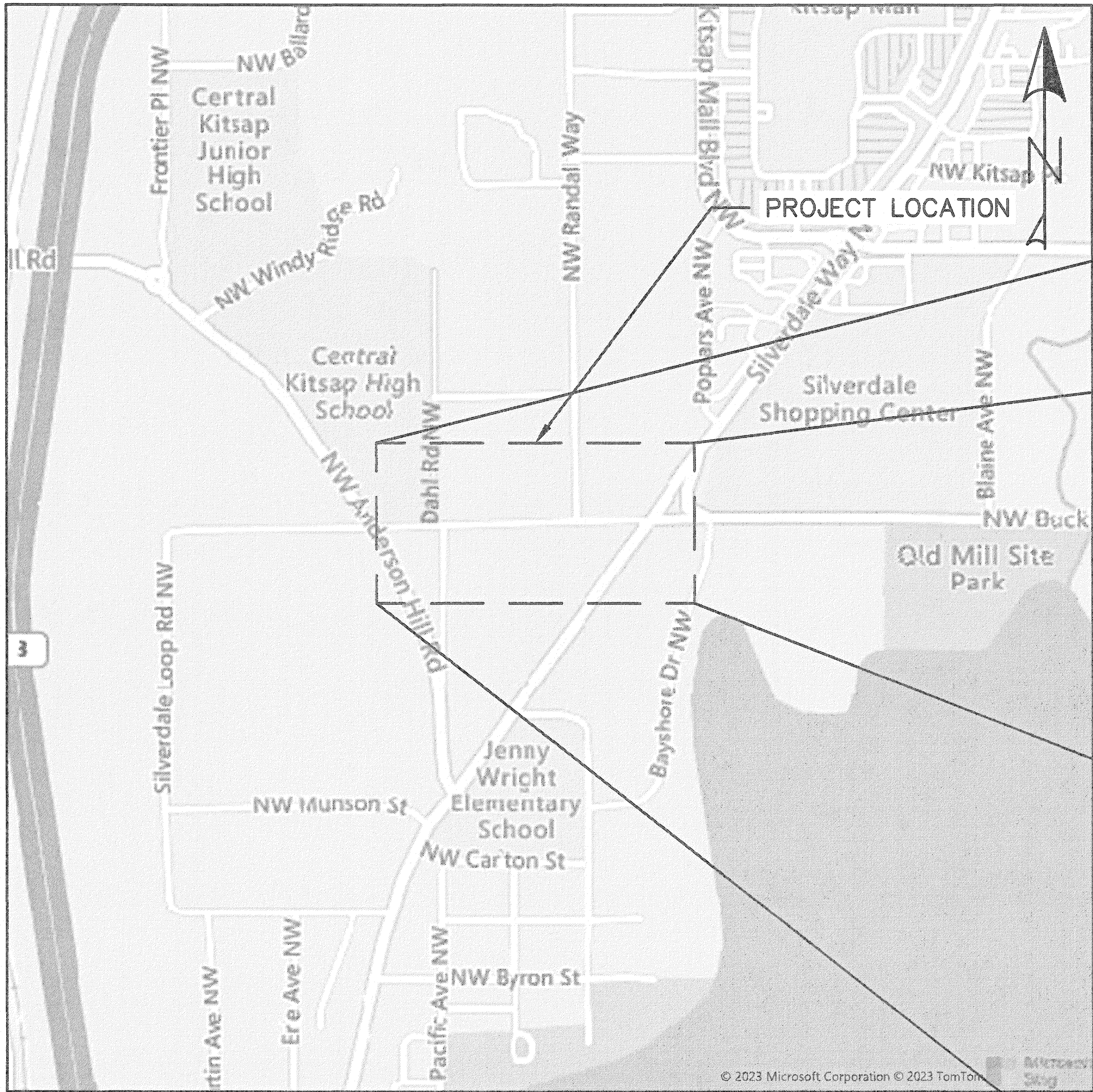
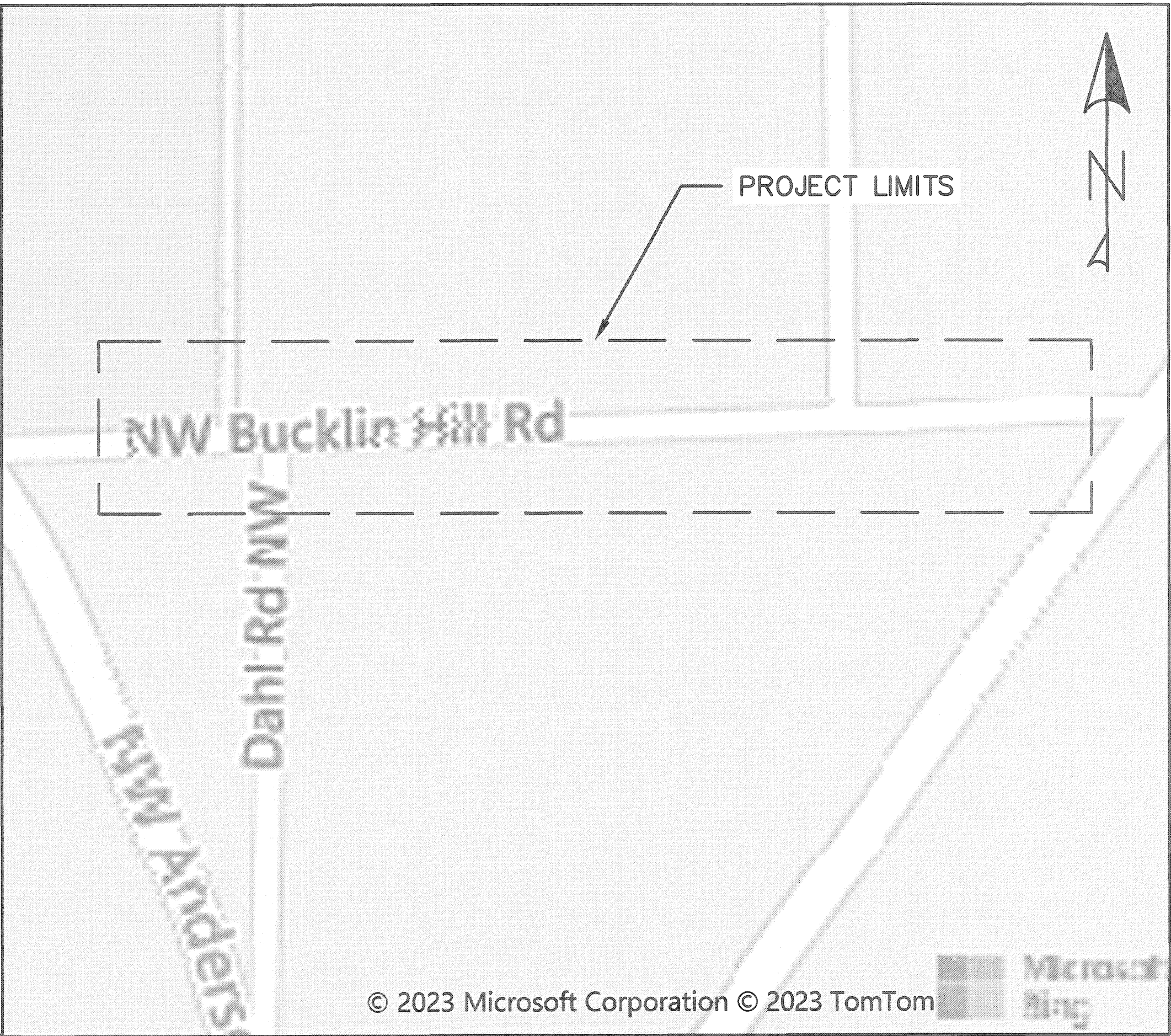


COUNTY STORMWATER PROJECT No. PR000594
CIPP PIPE REPLACEMENT PROJECT 2025

SHEET INDEX	
SHEET #	SHEET DESCRIPTION
1	COVER SHEET
2	LEGEND, ABBREVIATIONS, & NOTES
3	SITE PLAN
4	TRAFFIC CONTROL PLAN



VICINITY MAP



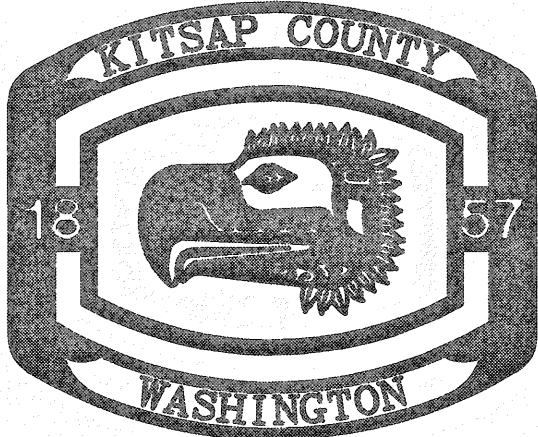
PROJECT MAP



APPROVED FOR CONSTRUCTION:
7/16/25
DATE
JOSEPH P. RUTAN, DIRECTOR OF PUBLIC WORKS

BOARD OF COMMISSIONERS:
ORAN ROOT
CHRISTINE ROLFES
KATHERINE T. WALTERS

DIRECTOR OF PUBLIC WORKS
JOSEPH P. RUTAN, P.E.



KITSAP COUNTY
DEPT. OF PUBLIC WORKS
614 DIVISION STREET MS-26
PORT ORCHARD, WA 98366
TEL:(360) 337-5777 FAX:(360) 337-4867

CIPP PIPE REPLACEMENT PROJECT 2025
COVER SHEET
SILVERDALE, WA

DATE
4/24/25
SHEET
1
OF
4

SYMBOL LEGEND

	INLET		GUY POLE
	STORM DRAIN CLEAN OUT		GAS VALVE
	DOWN SPOUT		LIGHT POLE
	BUSH		PHONE PEDASTAL
	LARGE ROCK		TRAFFIC SIGNAL CONTROL CABINET
	CONIFER TREE		TRAFFIC SIGNAL HEAD
	DECIDUOUS TREE		TRAFFIC SIGNAL POLE @ BASE
	TEST PIT/SOIL SAMPLE		PEDESTRIAN POLE
	STUMP		TRAFFIC SIGNAL HAND HOLE
	WETLANDS FLAG#		CABLE TV PEDASTAL
	BOLLARD		UTILITY POLE
	GATE POST		UTILITY POLE W/LIGHT
	FLAG POLE		YARD LIGHT
	MAIL BOX		

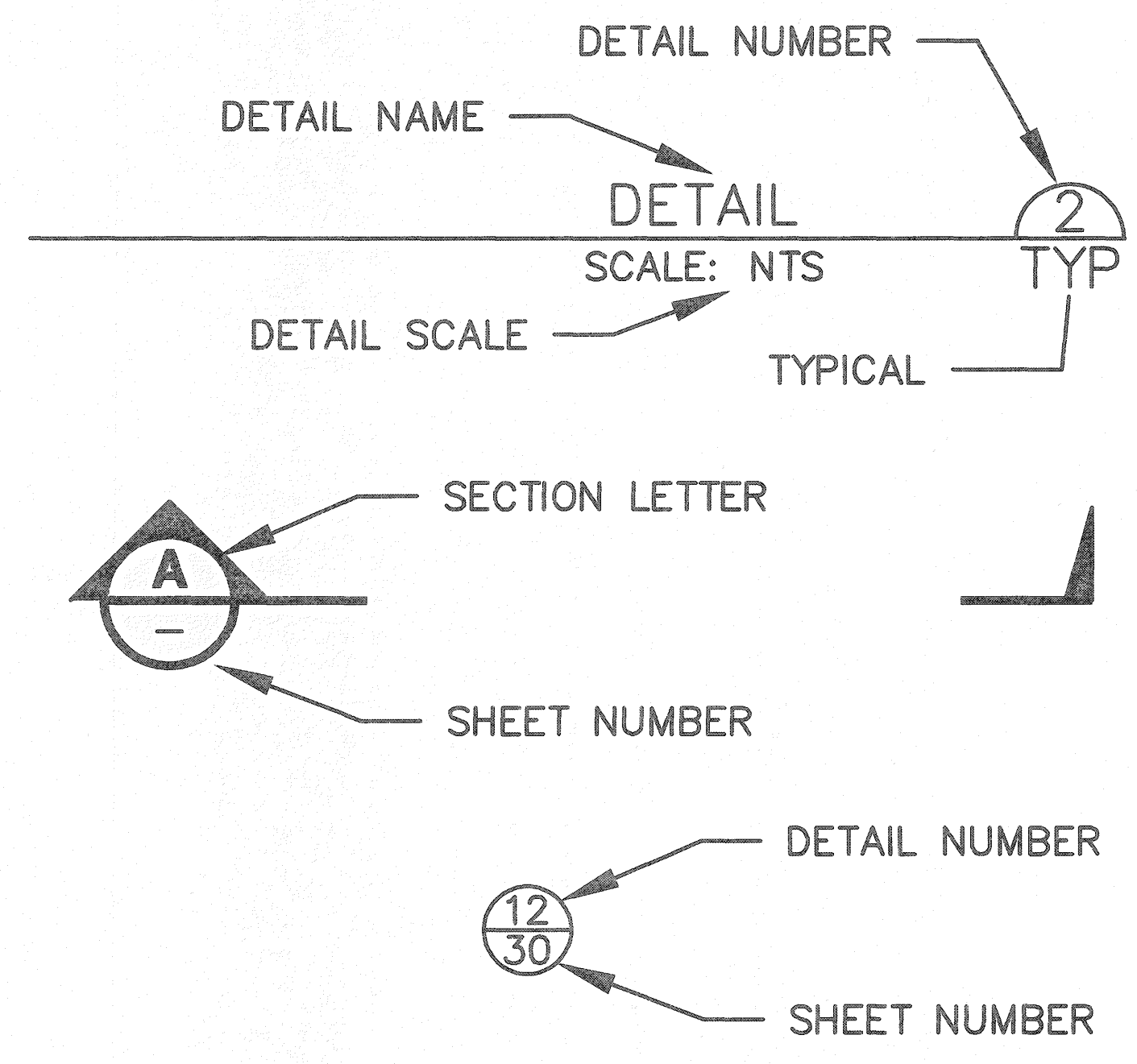
	RAILROAD SIGN
	RAILROAD TRACK SWITCH
	RAILROAD PAVEMENT MARKING
	ROAD SIGN
	WATER BLOWOFF VALVE
	FIRE CONNECTION
	FIRE HYDRANT
	FIRE POST INDICATOR VALVE
	HOSE BIB
	IRRIGATION BOX
	WATER METER
	WATER MANHOLE
	PRESSURE RELIEF VALVE
	IRRIGATION SPRINKLER HEAD
	WATER VALVE
	WATER WELL
	HANDICAP PARKING SYMBOL
	SANITARY SEWER CLEAN OUT
	SANITARY SEWER FORCE MAIN VALVE
	SANITARY SEWER MANHOLE
	COMMUNICATIONS MANHOLE
	UTILITY DROP FROM POLE
	ELECTRICAL BOX ON CONCRETE
	ELECTRICAL CABINET
	ELECTRICAL HAND HOLE
	ELECTRICAL MANHOLE
	ELECTRICAL METER
	GUY ANCHOR
	GAS METER

LINE LEGEND

	200	MAJOR CONTOUR LINE
		MINOR CONTOUR LINE
		CULVERT
	OHW	ORDINARY HIGH WATER LINE
		TREE LINE
		BUILDING LINE
	x x	FENCE
	GR	GUARD RAIL
		RIP RAP
		RETAINING WALL
	W	UNDERGROUND WATER LINE
		BARRIER/CURB LINE
		EDGE OF CONCRETE
		EDGE OF DIRT
		EDGE OF GRAVEL
		EDGE OF ASPHALT
		SHOULDER
	OCM	OVERHEAD COMMUNICATION LINE
	OHE	OVERHEAD ELECTRIC LINE
	OFO	OVERHEAD FIBER OPTIC LINE
	OPH	OVERHEAD PHONE LINE
	OTV	OVERHEAD TELEVISION LINE
	SS	UNDERGROUND SANITARY SEWER LINE
	UTV	UNDERGROUND CABLE LINE
	UGE	UNDERGROUND POWER LINE
	UFO	UNDERGROUND FIBER OPTIC LINE
	G	UNDERGROUND GAS LINE
	UCM	UNDERGROUND COMMUNICATION LINE
		EXISTING STORMWATER PIPE
		PROPOSED CIPP
		ROW

ABBREVIATIONS

AC	ASPHALT CONCRETE	ECB	EROSION CONTROL	MEF	MAXIMUM EXTENT	RT	RIGHT
AD	ALGEBRAIC DIFFERENCE		BLANKET		FEASIBLE	S	SOUTH
ALUM	ALUMINUM	EG	EXISTING GROUND	MFR	MANUFACTURER	SCH	SCHEDULE
AP	ANGLE POINT	EL, ELEV	ELEVATION	MH	MANHOLE	SD	STORM DRAIN
APPROX	APPROXIMATE	EOP	EDGE OF PAVEMENT	MDPT	MIDPOINT	SDCB	STORM DRAIN CATCH BASIN
ASPH	ASPHALT	EQ	EQUAL	MIN	MINIMUM		
@	AT	EVCE	END VERTICAL CURVE	MISC	MISCELLANEOUS	SDMH	STORM DRAIN MANHOLE
AVE	AVENUE		ELEVATION	MJ	MECHANICAL JOINT	SE	SOUTHEAST
BLDG	BUILDING	EVCS	END VETICAL CURVE	MON	MONUMENT	SECT	SECTION
BM	BENCH MARK		STATION	N	NORTH, NORTHING	SF	SQUARE FOOT
BR	BOTTOM OF RAMP	EX, EXIST	EXISTING	NE	NORTHEAST	SHLDR	SHOULDER
BW	BACK OF SIDEWALK	FG	FINISHED GRADE	NO	NORTH	SHT	SHEET
BOW	BOTTOM OF WALL	FH	FIRE HYDRANT	NST	NOT STEEPER THAN	SIM	SIMILAR
BT	BURIED TELEPHONE	FIG	FIGURE	NW	NORTHWEST	SL	SLOPE
BVC	BEGIN VERTICAL CURVE	FL	FLOW LINE, FLANGE	OC	ON CENTER	SPEC	SPECIFICATIONS
CB	CATCH BASIN	FM	FORCE MAIN	OD	OUTSIDE DIAMETER	SQ	SQUARE
CCP	CONCRETE CYLINDER PIPE	FO	FIBER OPTIC	OHWM	ORDINARY HIGH WATER	SS	SANITARY SEWER
CG	CLEARING AND GRUBBING	FOC	FACE OF CURB		MARK	SSFM	SANITARY SEWER FORCE MAIN
CI	CAST IRON	FT	FOOT, FEET	OP	OVERHEAD POWER		
CIP	CAST IN PLACE	FTG	FOOTING	P	POWER	SSMH	SANITARY SEWER MANHOLE
CL	CLASS	G	GAS	PAVE	PAVEMENT	ST	STREET
CLR	CLEAR	GA	GAUGE	PC	POINT OF CURVATURE	STA	STATION
CMP	CORRUGATED OR	GALV	GALVANIZED	PCC	PORTLAND CEMENT	STD	STANDARD
	CULVERT METAL PIPE	GV	GATE VALVE		CONCRETE	SW	SOUTHWEST
CO	CLEANOUT	H, HORZ	HORIZONTAL	PE	POLYETHYLENE	S/W	SIDEWALK
CONC	CONCRETE	HDPE	HIGH DENSITY	PI	POINT OF INTERSECTION	T, TEL	TELEPHONE
CP	CONCRETE PIPE, CULVERT		POLYETHYLENE	PK	SURVEY NAIL	TBC	TOP BACK OF CURB
	PIPE	HMA	HOT MIX ASPHALT	PP	POWER POLE	TCE	TEMPORARY
CPEP	CORRUGATED	ID	INSIDE DIAMETER	PSI	POUNDS PER SQUARE		CONSTRUCTION EASEMENT
	POLYTHELENE PIPE	IE	INVERT ELEVATION		INCH	PT	POINT OF TANGENCY
CSBC	CRUSHED SURFACE BASE	IN	INCH		POLYVINYL CHLORIDE PIPE	TOW	TOP OF WALL
	COURSE	IPS	IRON PIPE SIZE	PVC		TR	TOP OF RAMP
CSTC	CRUSHED SURFACE TOP	JT	JOINT	PVI	POINT OF VERTICAL	TYP	TYPICAL
COURSE		KC	KITSAP COUNTY		INTERSECTION	U/G	UNDERGROUND
CULV	CULVERT	KCPW	KITSAP COUNTY PUBLIC	PVT	POINT OF VERTICAL	UNO	UNLESS OTHERWISE
DI	DUCTILE IRON		WORKS		TANGENCY	NOTED	
DIA	DIAMETER	L	LENGTH	R	RADIUS	V, VERT	VERTICAL
DWG	DRAWING	LPS	LOW PRESSURE SEWER	RCP	REINFORCED CONCRETE	W	WATER
DWY	DRIVEWAY	LT	LEFT		PIPE	W/	WITH
E	EAST	LF	LINEAR FOOT	REQ	REQUIRED	W/O	WITHOUT
EA	EACH	MAX	MAXIMUM	ROW	RIGHT OF WAY	WSDOT	WASHINGTON STATE
EASE	EASEMENT	MB	MAILBOX	RP	RADIUS POINT		DEPARTMENT OF



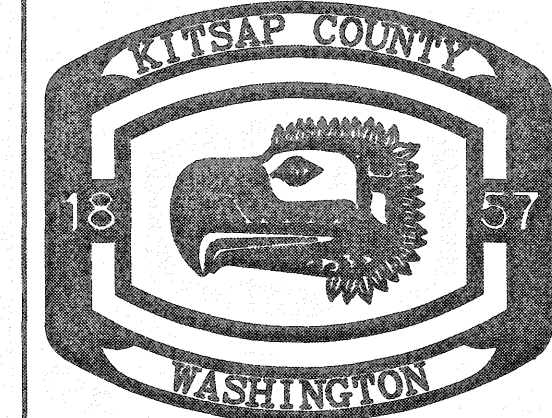
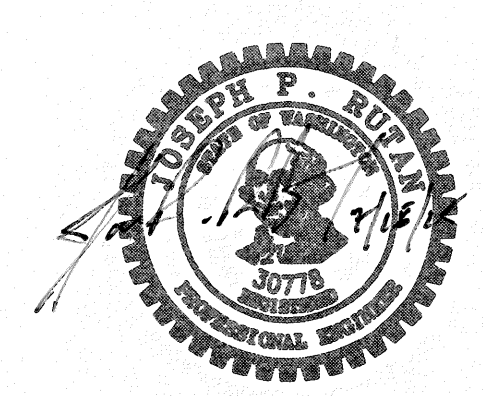
GENERAL NOTES:

1. THE CONTRACTOR SHALL CALL THE UTILITY LOCATION REQUEST CENTER PRIOR TO ANY EXCAVATION WORK. NO EXCAVATION SHALL BEGIN UNTIL ALL UNDERGROUND UTILITIES HAVE BEEN LOCATED.
2. ALL MATERIAL AND WORKMANSHIP SHALL BE IN ACCORDANCE WITH THE REQUIREMENTS OF THE WASHINGTON STATE DEPARTMENT OF TRANSPORTATION/APWA STANDARD SPECIFICATIONS FOR ROAD, BRIDGE, AND MUNICIPAL CONSTRUCTION, LATEST EDITION.
3. THE CONTRACTOR SHALL MEET THE CONDITIONS OF ALL PROJECT PERMITS AND LOCAL, STATE, AND FEDERAL LAWS AND REGULATIONS..
4. THE CONTRACTOR SHALL LIMIT THE AREA OF CLEARING TO ONLY THAT WHICH IS NECESSARY TO COMPLETE THE REQUIRED WORK. ALL DISTURBED AREAS SHALL BE GRADED TO MATCH THE EXISTING GROUND AND PROMPTLY SEEDED PER SP 8-01.3(2)B.
5. ALL EROSION AND SEDIMENTATION CONTROL MEASURES SHALL BE IN ACCORDANCE WITH BEST MANAGEMENT PRACTICES CONTAINED WITHIN THE KITSAP COUNTY STORMWATER MANAGEMENT MANUAL, LATEST EDITION.
6. ALL CATCH BASINS SHALL HAVE STANDARD FRAMES AND "KITSAP COUNTY" STAMPED VANED GRATES.

REVISIONS

No.	BY	DATE	DESCRIPTION

SURVEYED: N/A
DESIGNED: DP
DRAWN: DP
CHECKED: JS
CRP No.: N/A



KITSAP COUNTY
DEPT. OF PUBLIC WORKS
614 DIVISION STREET MS-26
PORT ORCHARD, WA 98366
TEL:(360) 337-5777 FAX:(360) 337-4887

CIPP PIPE REPLACEMENT PROJECT
2025

LEGEND, ABBREVIATIONS, & NOTES
SILVERDALE, WA

DATE 4/24/25
SHEET 2 OF 4

GENERAL NOTES

1. WORK TO BE COMPLETED DURING THE DRY SEASON, FROM MAY 1 TO OCTOBER 1.
2. TV FOOTAGE AVAILABLE FOR ALL PROPOSED PIPES INDICATED ON THIS PAGE TO BE LINED. CONTRACTOR TO REVIEW FOOTAGE AND DETERMINE FEASIBILITY OF SECTIONS TO BE LINED.
3. STAGING AREA TO BE ON BUCKLIN HILL IN RIGHT-OF-WAY ON SOUTH SIDE OF ROADWAY AND TO ONLY BLOCK UP TO ONE LANE OF TRAFFIC. LOCATION TO BE COORDINATED WITH ENGINEER AND GENERAL CONTRACTOR PRIOR TO IMPLEMENTATION. SEE SHEET 4 FOR TEMPORARY CONTROL PLAN.
4. SOURCE OF RIGHT-OF-WAY BOUNDARY LINE INFORMATION IS KITSAP COUNTY GIS.
5. LOCATION OF STORMWATER CONVEYANCE LINES, CATCHBASINS, AND UNDERGROUND UTILITIES BASED UPON COUNTY GIS AND FIELD MEASUREMENTS.
6. TOPOGRAPHIC ELEMENTS SHOWN ON MAP INTENDED FOR CIVIL ENGINEERING DESIGN.
7. FOR INLET PROTECTION, ADHERE TO WSDOT STANDARD PLAN I-40.20-00.

LEGEND

- PROPOSED CIPP
- EXISTING STORMWATER PIPE
- ROW
- EXISTING INLETS

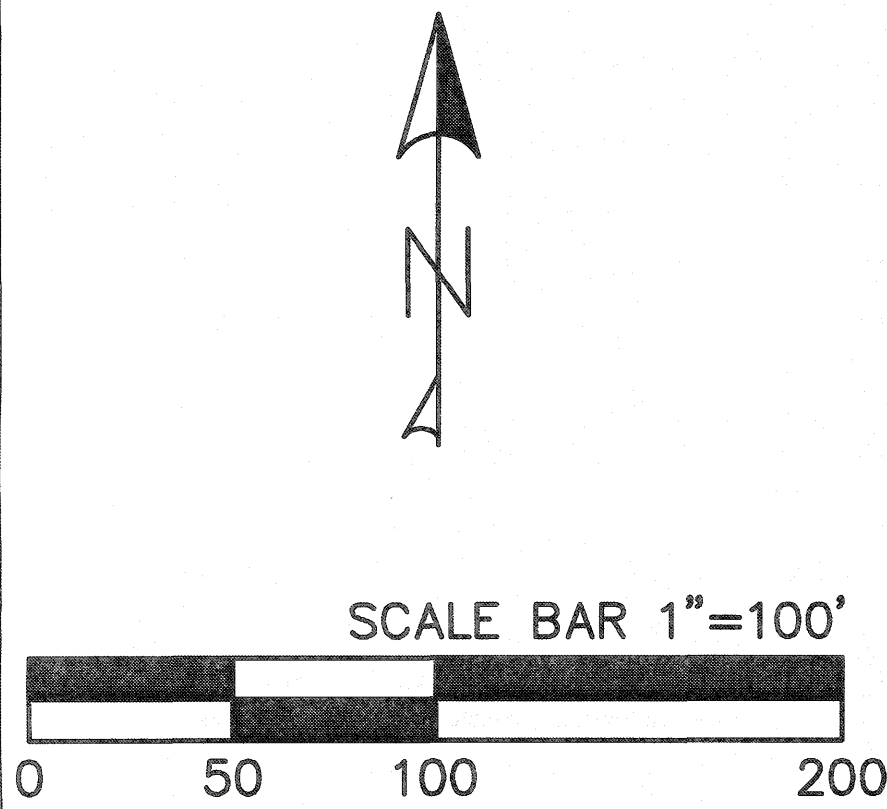
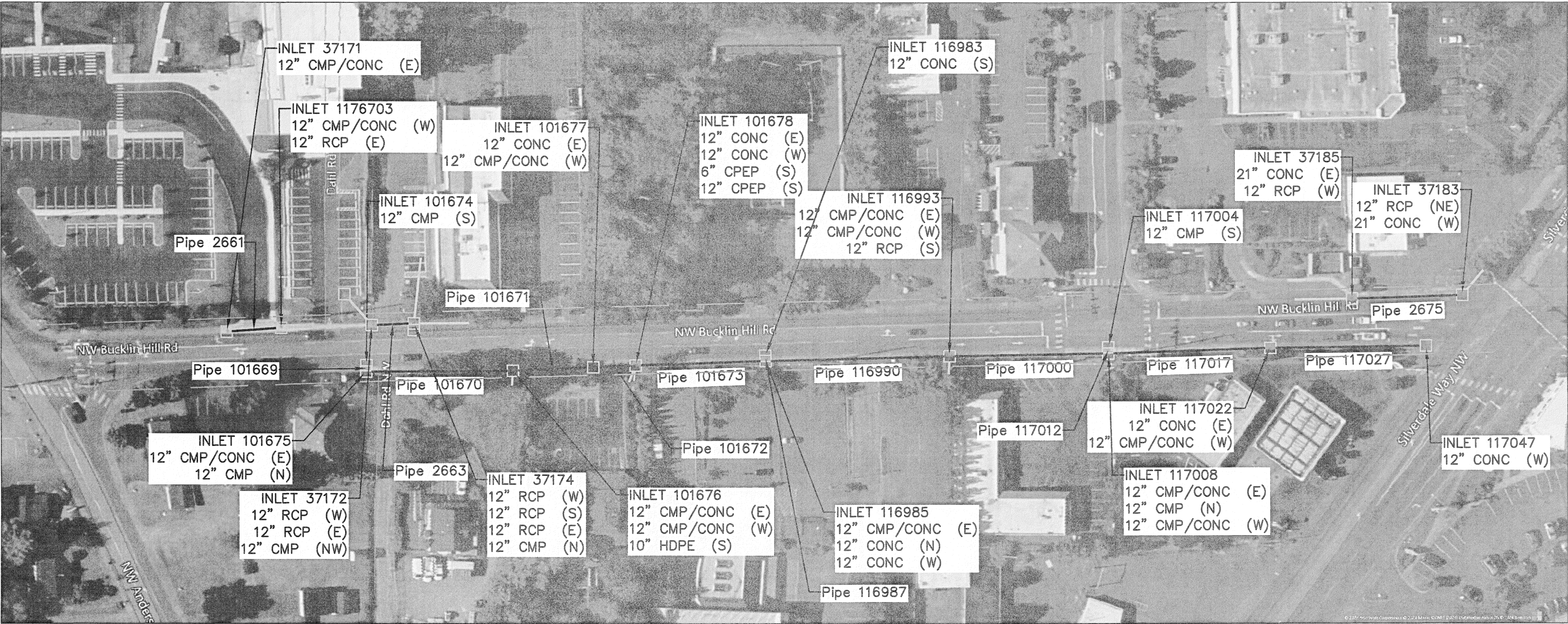




TABLE 1: PIPES TO CIPP

Pipe ID	Diameter (in)	Material	Length (ft)	Upstream Inlet ID	Upstream Inlet - Rim to IE (in)	Downstream Inlet ID	Downstream Inlet - Rim to IE (in)
2661	12	CMP/CONC	47	37171	51	1176703	43
2663	12	CONC	35	37172	42	37174	45
2675	21	CONC	98	37185	40	37183	32
101669	12	CMP	4	101674	23	101675	28
101670	12	CMP/CONC	113	101675	28	101676	45
101671	12	CMP/CONC	77	101676	45	101677	42
101672	12	CONC	40	101677	42	101678	81
101673	12	CONC	122	101678	81	116985	70
116987	12	CONC	4	116983	31	116985	32
116990	12	CMP/CONC	157	116985	69	116993	49
117000	12	CMP/CONC	144	116993	49	117008	63
117012	12	CMP	4	117004	29	117008	30
117017	12	CMP/CONC	143	117008	64	117022	53
117027	12	CONC	112	117022	54	117047	41



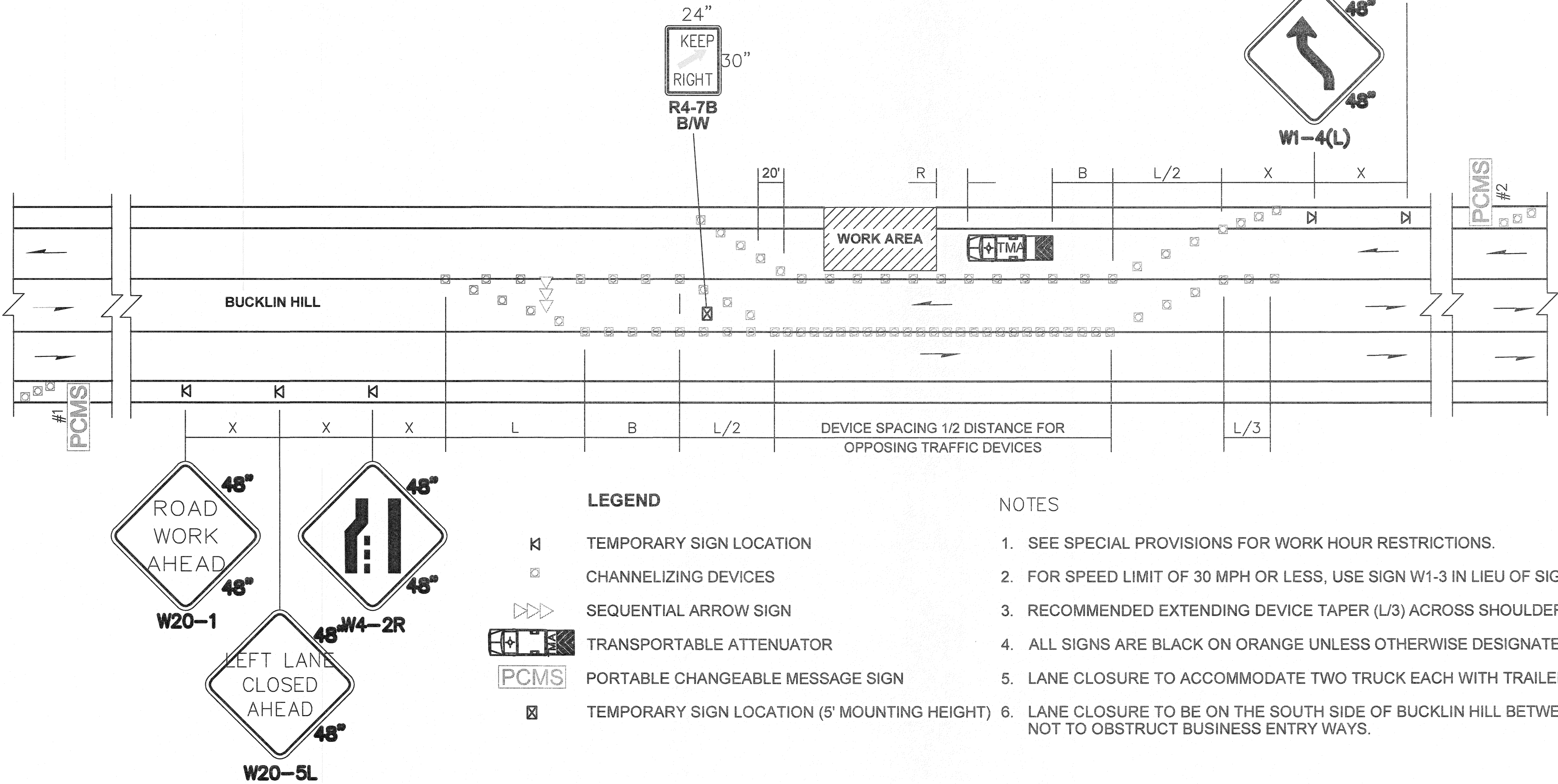
REVISIONS				SURVEYED: N/A			KITSAP COUNTY DEPT. OF PUBLIC WORKS 614 DIVISION STREET MS-26 PORT ORCHARD, WA 98366 TEL:(360) 337-5777 FAX:(360) 337-4887	CIPP PIPE REPLACEMENT PROJECT 2025 SITE PLAN SILVERDALE, WA	DATE 4/24/25			
No.	BY	DATE	DESCRIPTION	DESIGNED: DP					DRAWN: DP	CHECKED: JS	CRP No.: N/A	SHEET 3 OF 4

BUFFER DATA										
LONGITUDINAL BUFFER SPACE = B										
SPEED (MPH)	25	30	35	40	45	50	55	60	65	70
LENGTH (feet)	155	200	250	305	360	425	495	570	645	730
TRANSPORTABLE ATTENUATOR ROLL AHEAD DISTANCE = R										
HOST VEHICLE WEIGHT 9,900 TO 22,000 lbs.					HOST VEHICLE WEIGHT > 22,000 lbs.					
< 45 MPH	45-55 MPH	> 55 MPH	< 45 MPH	45-55 MPH	> 55 MPH	< 45 MPH	45-55 MPH	> 55 MPH	< 45 MPH	45-55 MPH
100'	123'	172'	74'	100'	150'	100'	123'	172'	74'	100'
PROTECTIVE VEHICLE (WORK VEHICLE) = R										
NO SPECIFIED DISTANCE REQUIRED										

SIGN SPACING = X (1)		
RURAL HIGHWAYS	60 / 65 MPH	800' □
RURAL ROADS	45 / 55 MPH	500' □
RURAL ROADS & URBAN ARTERIALS	35 / 40 MPH	350' □
RURAL ROADS & URBAN ARTERIALS	25 / 30 MPH	200' □ (2)
RESIDENTIAL & BUSINESS DISTRICTS		
URBAN STREETS	25 MPH OR LESS	100' □ (2)
(1) ALL SPACING MAY BE ADJUSTED TO ACCOMMODATE INTERCHANGE RAMP, AT-GRADE INTERSECTIONS AND DRIVEWAYS.		
(2) THIS SPACING MAY BE REDUCED IN URBAN AREAS TO FIT ROADWAY CONDITIONS.		

MINIMUM TAPER LENGTH = L (feet)										
LANE WIDTH (feet)	Posted Speed (mph)									
	25	30	35	40	45	50	55	60	65	70
10	105	150	205	270	450	500	550	-	-	-
11	115	165	225	295	495	550	605	660	-	-
12	125	180	245	320	540	600	660	720	780	-

CHANNELIZATION DEVICE SPACING (feet)		
MPH	TAPER	TANGENT
50/60	40	80
35/45	30	60
25/30	20	40



PCMS #1	
1	2
LEFT LANE CLOSURE	1 MILE AHEAD
2.0 SEC	2.0 SEC

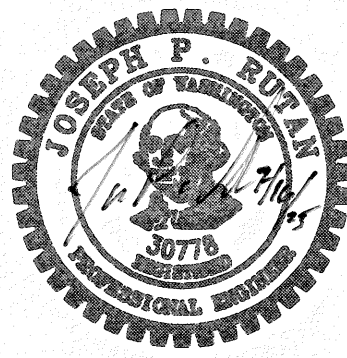
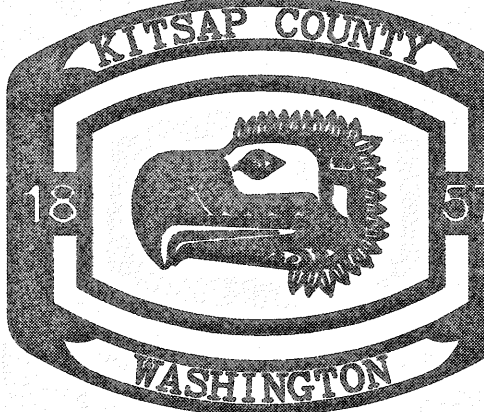
FIELD LOCATE IN ADVANCE OF TEMPORARY SIGNS.

PCMS #2	
1	2
LANE SHIFTS LEFT	1 MILE AHEAD
2.0 SEC	2.0 SEC

FIELD LOCATE IN ADVANCE OF TEMPORARY SIGNS.

LANE SHIFT - THREE LANE ROADWAY
SCALE: NTS

3
TYP

REVISIONS				SURVEYED: N/A				KITSAP COUNTY DEPT. OF PUBLIC WORKS 614 DIVISION STREET MS-26 PORT ORCHARD, WA 98366 TEL:(360) 337-5777 FAX:(360) 337-4867	CIPP PIPE REPLACEMENT PROJECT 2025 TRAFFIC CONTROL PLAN SILVERDALE, WA		DATE 4/24/25
No.	BY	DATE	DESCRIPTION	DESIGNED: DP							SHEET 4 OF 4
				DRAWN: DP							
				CHECKED: JS							
				CRP No.: N/A							