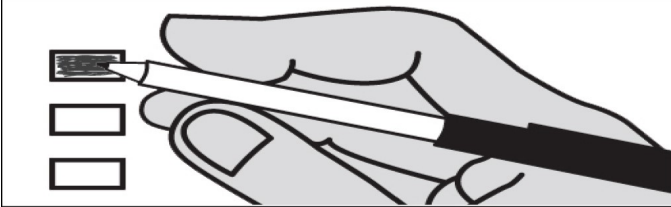


**Sample
Special Election
February 10, 2026
Kitsap County, Washington**

This ballot contains all contests that will appear on the February 10, 2026 Special Election ballot. Only the ballot issues that apply to the precinct where you are registered to vote will appear on your ballot.

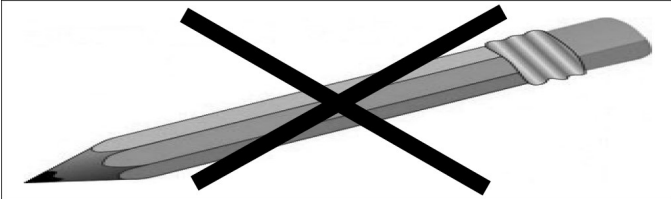
How to vote this ballot

Use dark blue or black ink to fill in the box to the left of your choice.

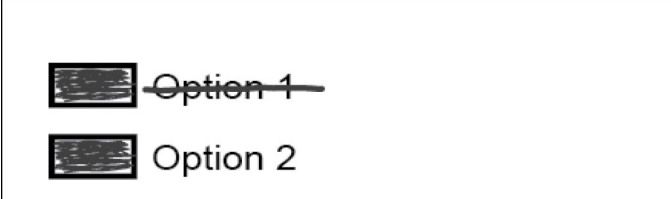


Mark **one** choice for a contest. If you mark more than one choice, no votes will be counted for that contest.

Do not use pencil



If you make a mistake



Draw a line through the entire measure response, then you may make another choice.

Ballot information is available online at:
kitsap.gov/elections

For a list of the people and organizations that donated to state and local candidates and ballot measure campaigns, visit www.pdc.wa.gov.

Local Measures

**Bremerton School District No. 100-C
Proposition No. 1**

Replacement for Educational Programs and Operations Levy

The Board of Directors of Bremerton School District No. 100-C adopted Resolution No. 2025/2026-10 authorizing a renewal educational levy. This proposition would authorize the District to levy the following excess taxes on all taxable property within the District to pay for educational programs/services not funded by the State, including employee costs, instructional materials, special programs, sports, technology, transportation, maintenance and other operating costs:

| Collection Years | Approximate Levy Rate/\$1,000 Assessed Value | Levy Amount |
|------------------|--|--------------|
| 2027 | \$2.09 | \$16,879,954 |
| 2028 | \$2.09 | \$17,555,152 |
| 2029 | \$2.09 | \$18,257,358 |
| 2030 | \$2.09 | \$18,987,652 |

subject to legal limits at the time of levy. Should this proposition be approved?

Yes

No

**Sample
Special Election
February 10, 2026
Kitsap County, Washington**

**North Kitsap School District No. 400
Proposition No. 1**

Replacement Educational Programs and Operations Levy

The Board of Directors of North Kitsap School District No. 400 adopted Resolution No. 11-01-25, concerning a proposition for an educational programs and operations replacement levy. This proposition would authorize the District to levy the following excess taxes, replacing an expiring levy, on all taxable property within the District, for educational programs and operations not funded by the State (including instructional support/staff, smaller classes, rising maintenance costs, mental health, extracurricular activities, curriculum, student safety):

| Collection Year | Estimated Levy Rate/\$1,000 Assessed Value | Levy Amount |
|-----------------|--|--------------|
| 2027 | \$1.41 | \$21,010,031 |
| 2028 | \$1.41 | \$21,834,134 |
| 2029 | \$1.40 | \$22,549,886 |
| 2030 | \$1.43 | \$23,966,542 |

all as provided in Resolution No. 11-01-25. Should this proposition be approved?

Levy . . . Yes

Levy . . . No

**North Kitsap School District No. 400
Proposition No. 2**

Replacement Facilities and Technology Capital Projects Levy

The Board of Directors of North Kitsap School District No. 400 adopted Resolution No. 11-02-25, concerning a proposition for a capital projects replacement levy. This proposition would fund capital improvements, replacing Hilder Pearson Elementary and improving safety, security, buildings and technology District-wide (including fire alarms, fencing, roofs, HVAC, exterior repairs), and authorize the District to levy the following excess taxes on all taxable property within the District:

| Collection Year | Estimated Levy Rate/\$1,000 Assessed Value | Levy Amount |
|-----------------|--|--------------|
| 2027 | \$0.91 | \$13,550,000 |
| 2028 | \$0.91 | \$14,092,000 |
| 2029 | \$0.91 | \$14,655,680 |
| 2030 | \$0.91 | \$15,241,907 |
| 2031 | \$1.07 | \$18,700,000 |
| 2032 | \$1.07 | \$19,448,000 |

all as provided in Resolution No. 11-02-25. Should this proposition be approved?

Levy . . . Yes

Levy . . . No