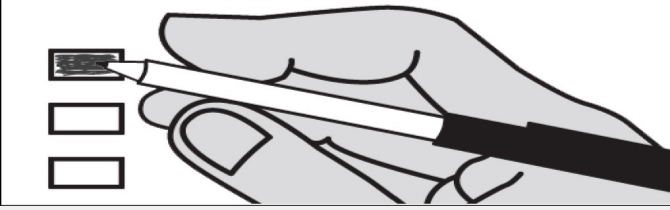


Sample Ballot
Special Election
February 11, 2025
Kitsap County, Washington

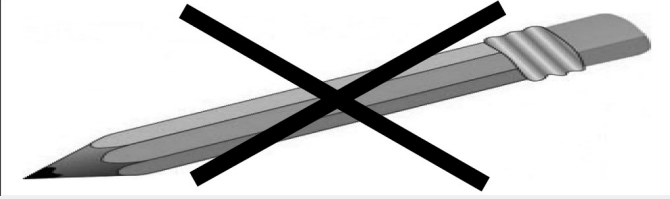
How to vote this ballot

Use dark blue or black ink to fill in the box to the left of your choice.

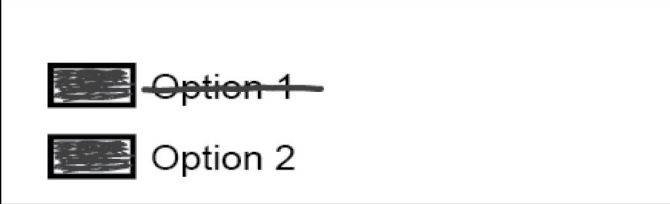


Mark **one** choice for a contest. If you mark more than one choice, no votes will be counted for that contest.

Do not use pencil



If you make a mistake



Draw a line through the entire measure response, then you may make another choice.

Ballot information is available online at: kitsap.gov/elections

For a list of the people and organizations that donated to state and local candidates and ballot measure campaigns, visit www.pdc.wa.gov.

Local Measure

South Kitsap School District No. 402
Proposition No. 1

Replacement of Expiring Educational Programs and Operations Levy

The Board of Directors of South Kitsap School District No. 402 adopted Resolution No. 1378, concerning a proposition for educational programs and operations. This proposition would authorize the District to levy the following excess taxes, as a replacement of the expiring levy, upon all taxable property within the District, for support of the District's General Fund educational programs and operations expenses not fully funded by the State:

Collection Year	Estimated Levy Rate/\$1,000 Assessed Value	Levy Amount
2026	\$1.94	\$30,990,823
2027	\$1.94	\$32,313,252
2028	\$1.94	\$33,950,830
2029	\$1.94	\$35,690,540

all as provided in Resolution No. 1378. Should this proposition be approved?

Levy. . .Yes

Levy. . .No

North Mason School District No. 403
Proposition No.1

Renewal of Educational Programs and Operations Levy

The Board of Directors of North Mason School District adopted Resolution No. 11-G-24 concerning a proposition for a renewal levy for education funding. This proposition authorizes the District to levy the following excess taxes to renew an expired levy, on all taxable property within the District, to maintain the District's educational programs and operations, which are not funded or fully funded by the State:

Collection Years	Estimated Levy Rate/\$1,000 Assessed Value*	Levy Amount*
2026	\$1.32	\$5,577,446
2027	\$1.32	\$5,577,446
2028	\$1.32	\$5,577,446
2029	\$1.32	\$5,577,446

*to be adjusted for changes in assessed value

Should this proposition be approved?

Levy...Yes

Levy...No