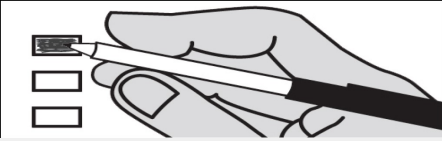


**Sample Ballot**  
**General Election**  
**November 5, 2024**  
**Kitsap County, Washington**

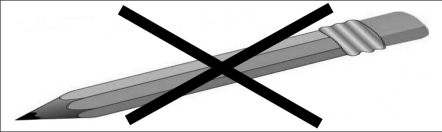
**How to vote this ballot**

**Use dark blue or black ink to fill in the box to the left of your choice.**

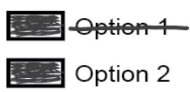


Mark **one** choice for a contest. If you mark more than one choice, no votes will be counted for that contest.

**Do not use pencil**



**If you make a mistake**



Draw a line through the entire measure response, then you may make another choice.

To vote for a candidate **not** listed on the ballot, write in the name in the space provided and fill in the box.

Ballot information is available online at: [kitsap.gov/elections](http://kitsap.gov/elections)

**Who donates to campaigns?**  
 View information on financial contributors for federal candidates:

**Federal Election Commission**  
[www.fec.gov](http://www.fec.gov)  
 Toll Free:  
 1 (800) 424-9530

View financial contributors for candidates and measures:

**Public Disclosure Commission**  
[www.pdc.wa.gov](http://www.pdc.wa.gov)  
 Toll Free:  
 1 (877) 601-2828

**This ballot contains all contests that will appear on the November 5, 2024 General Election ballot. Only the ballot issues that apply to the precinct where you are registered to vote will appear on your ballot.**

**State Measures**

**Initiative to the People**

**Initiative Measure No. 2066**

Initiative Measure No. 2066 concerns regulating energy services, including natural gas and electrification. This measure would repeal or prohibit certain laws and regulations that discourage natural gas use and/or promote electrification, and require certain utilities and local governments to provide natural gas to eligible customers.

Should this measure be enacted into law?

- Yes
- No

**Initiatives to the Legislature**

**Initiative Measure No. 2109**

Initiative Measure No. 2109 concerns taxes. This measure would repeal an excise tax imposed on the sale or exchange of certain long-term capital assets by individuals who have annual capital gains of over \$250,000. This measure would decrease funding for K-12 education, higher education, school construction, early learning, and childcare.

Should this measure be enacted into law?

- Yes
- No

**Initiative Measure No. 2117**

Initiative Measure No. 2117 concerns carbon tax credit trading. This measure would prohibit state agencies from imposing any type of carbon tax credit trading, and repeal legislation establishing a cap and invest program to reduce greenhouse gas emissions. This measure would decrease funding for investments in transportation, clean air, renewable energy, conservation, and emissions-reduction.

Should this measure be enacted into law?

- Yes
- No

**Initiative Measure No. 2124**

Initiative Measure No. 2124 concerns state long term care insurance. This measure would provide that employees and self-employed people must elect to keep coverage under RCW 50B.04 and could opt-out any time. It would also repeal a law governing an exemption for employees. This measure would decrease funding for Washington's public insurance program providing long-term care benefits and services.

Should this measure be enacted into law?

- Yes
- No

**Federal Partisan Offices**

**President / Vice President of the United States**

- Kamala D. Harris / Tim Walz**  
Democratic Party Nominees
- Donald J. Trump / JD Vance**  
Republican Party Nominees
- Robert F. Kennedy Jr. / Nicole Shanahan**  
We The People Party Nominees
- Jill Stein / Rudolph Ware**  
Green Party Nominees
- Claudia De la Cruz / Karina Garcia**  
Socialism and Liberation Party Nominees
- Rachele Fruit / Dennis Richter**  
Socialist Workers Party Nominees
- Joseph Kishore / Jerry White**  
Socialist Equality Party Nominees
- Chase Oliver / Mike ter Maat**  
Libertarian Party Nominees
- Cornel West / Melina Abdullah**  
Justice For All Party Nominees
- Shiva Ayyadurai / Crystal Ellis**  
Independent Candidates
- 

**READ: Each Candidate for President and Vice President is the official nominee of a political party. For other partisan offices, each candidate may state a political party that he or she prefers. A candidate's preference does not imply that the candidate is nominated or endorsed by the party, or that the party approves of or associates with that candidate.**

**U.S. Senator**

- Maria Cantwell**  
(Prefers Democratic Party)
- Dr Raul Garcia**  
(Prefers GOP Party)
- 

**Congressional District 6 U.S. Representative**

- Emily Randall**  
(Prefers Democratic Party)
- Drew C MacEwen**  
(Prefers Republican Party)
- 

**State Partisan Offices**

**Governor**

- Bob Ferguson**  
(Prefers Democratic Party)
- Dave Reichert**  
(Prefers Republican Party)
- 

**Lt. Governor**

- Denny Heck**  
(Prefers Democratic Party)
- Dan Matthews**  
(Prefers Republican Party)
- 

**Vote Both Sides of the Ballot**

**Sample Ballot**  
**General Election**  
**November 5, 2024**  
**Kitsap County, Washington**

**Secretary of State**

**Steve Hobbs**  
(Prefers Democratic Party)

**Dale Whitaker**  
(Prefers Republican Party)

-----

**State Treasurer**

**Mike Pellicciotti**  
(Prefers Democratic Party)

**Sharon Hanek**  
(Prefers Republican Party)

-----

**State Auditor**

**Pat (Patrice) McCarthy**  
(Prefers Democratic Party)

**Matt Hawkins**  
(Prefers Republican Party)

-----

**Attorney General**

**Pete Serrano**  
(Prefers Republican Party)

**Nick Brown**  
(Prefers Democratic Party)

-----

**Commissioner of Public Lands**

**Jaime Herrera Beutler**  
(Prefers Republican Party)

**Dave Upthegrove**  
(Prefers Democratic Party)

-----

**State Nonpartisan Office**

**Superintendent of Public Instruction**

**Chris Reykdal**

**David Olson**

-----

**State Partisan Offices**

**Insurance Commissioner**

**Patty Kuderer**  
(Prefers Democratic Party)

**Phil Fortunato**  
(Prefers Republican Party)

-----

**Legislative District 23**  
**State Senator**

Short and full 4-year term

**Drew Hansen**  
(Prefers Democratic Party)

**Lance Byrd**  
(Prefers Republican Party)

-----

**Legislative District 23**  
**State Representative Position 1**

**Tarra Simmons**  
(Prefers Democratic Party)

**Kurt Robertson**  
(Prefers Republican Party)

-----

**Legislative District 23**  
**State Representative Position 2**

Short and full 2-year term

**Greg Nance**  
(Prefers Democratic Party)

**Jamie Miles**  
(Prefers Republican Party)

-----

**Legislative District 26**  
**State Representative Position 1**

**Adison Richards**  
(Prefers Democratic Party)

**Jesse L. Young**  
(Prefers Republican Party)

-----

**Legislative District 26**  
**State Representative Position 2**

**Michelle Caldier**  
(Prefers Republican Party)

**Tiffany Mitchell**  
(Prefers Democratic Party)

-----

**Legislative District 35**  
**State Representative Position 1**

**Dan Griffey**  
(Prefers Republican Party)

-----

**Legislative District 35**  
**State Representative Position 2**

**Travis Couture**  
(Prefers Republican Party)

**James DeHart**  
(Prefers Democratic Party)

-----

**County Partisan Offices**

**County Commissioner District 1**

Short and full 4-year term

**Christine Rolfes**  
(Prefers Democratic Party)

**Scott Henden**  
(Prefers Independent Party)

-----

**County Commissioner District 2**

**Sean Murphy**  
(Prefers Republican Party)

**Oran Root**  
(Prefers Republican Party)

-----

**Judicial Nonpartisan Offices**

**Supreme Court Justice Position 2**

**Sal Mungia**

**Dave Larson**

-----

**Supreme Court Justice Position 8**

**Steve Gonzalez**

-----

**Supreme Court Justice Position 9**

**Sheryl Gordon McCloud**

-----

**Court of Appeals, Division 2**  
**District 2 - Judge Position 2**

**Rebecca Glasgow**

-----

**Local Measure**

**North Kitsap School District No. 400**  
**Proposition No. 1**

**Facilities and Technology Capital**  
**Projects Levy**

The Board of Directors of North Kitsap School District No. 400 adopted Resolution No. 07-01-24, concerning a proposition for a capital projects levy. This proposition would fund construction, modernization and remodeling of school facilities district-wide to improve health, safety and security and upgrade technology equipment and infrastructure, and authorize the District to levy the following excess taxes, on all taxable property within the District:

Collection Year	Estimated Levy Rate/ \$1,000 Assessed Value	Levy Amount
2025	\$0.74	\$10,000,000
2026	\$0.82	\$11,500,000
2027	\$0.17	\$2,500,000
2028	\$0.17	\$2,575,000
2029	\$0.17	\$2,652,250
2030	\$0.17	\$2,732,000

all as provided in Resolution No. 07-01-24. Should this proposition be approved?

**Yes**

**No**

**County Nonpartisan Office**

**Kitsap County**  
**Public Utility District No. 1**  
**Commissioner District 3**

**Heather Pauley**

**Richard Tift**

-----