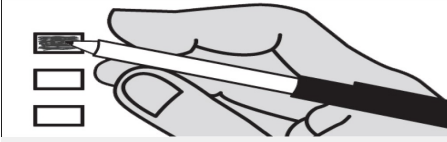


**Sample Ballot  
Primary  
August 6, 2024  
Kitsap County, Washington**

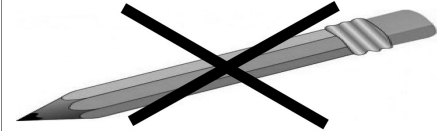
**How to vote this ballot**

**Use dark blue or black ink to fill in the box to the left of your choice.**



Mark **one** choice for a contest. If you mark more than one choice, no votes will be counted for that contest.

**Do not use pencil**



**If you make a mistake**



Draw a line through the entire measure response, then you may make another choice.

To vote for a candidate **not** listed on the ballot, write in the name in the space provided and fill in the box.

Ballot information is available online at: [kitsap.gov/elections](http://kitsap.gov/elections)

**Who donates to campaigns?**

View information on financial contributors for federal candidates:

**Federal Election Commission**

[www.fec.gov](http://www.fec.gov)  
Toll Free:  
1 (800) 424-9530

View financial contributors for candidates and measures:

**Public Disclosure Commission**

[www.pdc.wa.gov](http://www.pdc.wa.gov)  
Toll Free:  
1 (877) 601-2828

**This ballot contains all contests that will appear on the August 6, 2024 General Election ballot. Only the ballot issues that apply to the precinct where you are registered to vote will appear on your ballot.**

**READ: Each Candidate for partisan office may state a political party that he or she prefers. A candidate's preference does not imply that the candidate is nominated or endorsed by the party, or that the party approves of or associates with that candidate.**

**Federal Partisan Offices**

**U.S. Senator**

- Mel Ram**  
(Prefers Republican Party)
- Dr Raul Garcia**  
(Prefers GOP Party)
- David Tilton**  
(Prefers Non-Partisan Party)
- Maria Cantwell**  
(Prefers Democratic Party)
- Chuck Jackson**  
(Prefers Independent Party)
- Isaac A Holyk**  
(Prefers Republican Party)
- Henry Clay Dennison**  
(Prefers Socialist Workers Party)
- Scott Nazarino**  
(Prefers Republican Party)
- Paul Lawrence Giesick**  
(Prefers Democratic Party)
- Thor Amundson**  
(Prefers Independent Party)
- Goodspaceguy**  
(Prefers Republican Party)
- 

**Congressional District 6  
U.S. Representative**

- Emily Randall**  
(Prefers Democratic Party)
- Janis Clark**  
(Prefers Republican Party)
- Drew C MacEwen**  
(Prefers Republican Party)
- J. Graham Ralston**  
(Prefers Independent Party)
- Hilary Franz**  
(Prefers Democratic Party)
- 

**State Partisan Offices**

**Governor**

- Jim Daniel**  
(Prefers Republican Party)
- Cassandra Magdalene Hanson**  
(Prefers Democratic Party)
- Jeff Curry**  
(Prefers Independent Party)
- Alex Tsimerman**  
(Prefers Standup-America Party)
- Mark Mullet**  
(Prefers Democratic Party)
- Martin Lee Wheeler**  
(Prefers Republican Party)
- Jennifer Hoover**  
(Prefers Republican Party)
- Andre Stackhouse**  
(Prefers Green Party)
- EL'ona Kearney**  
(Prefers Democratic Party)
- Ricky Anthony**  
(Prefers Democratic Party)
- Bob Ferguson**  
(Prefers Democratic Party)
- Chaytan Inman**  
(Prefers Democratic Party)
- Michael DePaula**  
(Prefers Libertarian Party)
- Dave Reichert**  
(Prefers Republican Party)
- Don L Rivers**  
(Prefers Democratic Party)
- Jim Clark**  
(States No Party Preference)
- Fred Grant**  
(Prefers Democratic Party)
- Leon A Lawson**  
(Prefers Trump Republican Party)
- Edward Cale IV**  
(Prefers Democratic Party)
- Frank Dare**  
(Prefers Independent Party)
- William Combs**  
(Prefers Independent Party)
- Alan Makayev**  
(Prefers Nonsense Busters Party)
- Brian Bogen**  
(Prefers Nonpartisan Party)
- A.L. Brown**  
(Prefers Republican Party)
- Brad Mjelde**  
(States No Party Preference)
- Bill Hirt**  
(Prefers Republican Party)
- Rosetta Marshall-Williams**  
(Prefers Independence Party)
- Semi Bird**  
(Prefers Republican Party)
- 

**Lt. Governor**

- Patrick "Pat" Harman**  
(Prefers Liberal Republican Party)
- David Griffin**  
(Prefers Democratic Party)
- Bob Hagglund**  
(Prefers Republican Party)
- Dan Matthews**  
(Prefers Republican Party)
- Denny Heck**  
(Prefers Democratic Party)
- 

**Secretary of State**

- Marquez Tiggs**  
(Prefers Democratic Party)
- Dale Whitaker**  
(Prefers Republican Party)
- Damon Townsend**  
(Prefers No Labels Party)
- Steve Hobbs**  
(Prefers Democratic Party)
- 

**State Treasurer**

- Mike Pellicciotti**  
(Prefers Democratic Party)
- Sharon Hanek**  
(Prefers Republican Party)
- 

**State Auditor**

- Matt Hawkins**  
(Prefers Republican Party)
- Pat (Patrice) McCarthy**  
(Prefers Democratic Party)
- 

**Attorney General**

- Pete Serrano**  
(Prefers Republican Party)
- Nick Brown**  
(Prefers Democratic Party)
- Manka Dhingra**  
(Prefers Democratic Party)
- 

**Commissioner of Public Lands**

- Allen Lebovitz**  
(Prefers Democratic Party)
- Jaime Herrera Beutler**  
(Prefers Republican Party)
- Dave Upthegrove**  
(Prefers Democratic Party)
- Sue Kuehl Pederson**  
(Prefers Republican Party)
- Patrick DePoe**  
(Prefers Democratic Party)
- Jeralee Anderson**  
(Prefers Democratic Party)
- Kevin Van De Wege**  
(Prefers Democratic Party)
- 

**State Nonpartisan Office**

**Superintendent of Public Instruction**

- Reid Saaris**
- Chris Reykdal**
- John Patterson Blair**
- David Olson**
-

**Sample Ballot**  
**Primary**  
**August 6, 2024**  
**Kitsap County, Washington**

**State Partisan Offices**

**Insurance Commissioner**

- Patty Kuderer**  
(Prefers Democratic Party)
- Chris D. Chung**  
(Prefers Democratic Party)
- Jonathan Hendrix**  
(States No Party Preference)
- Bill Boyd**  
(Prefers Democratic Party)
- John Pestinger**  
(Prefers Democratic Party)
- Tim Verzal**  
(States No Party Preference)
- Phil Fortunato**  
(Prefers Republican Party)
- Justin Murta**  
(Prefers Republican Party)
- 

**Legislative District 23  
State Senator**

- Short and full 4-year term
- Lance Byrd**  
(Prefers Republican Party)
  - Drew Hansen**  
(Prefers Democratic Party)
  - Ace Haynes**  
(Prefers Republican Party)
  -

**Legislative District 23  
State Representative Position 1**

- Tiffany Attrill**  
(Prefers Independent Party)
- Kurt Robertson**  
(Prefers Republican Party)
- Tarra Simmons**  
(Prefers Democratic Party)
- 

**Legislative District 23  
State Representative Position 2**

- Short and full 2-year term
- Greg Nance**  
(Prefers Democratic Party)
  - John Gibbons**  
(Prefers Democratic Party)
  - Jamie Miles**  
(Prefers Republican Party)
  - Brynn Felix**  
(Prefers Democratic Party)
  -

**Legislative District 26  
State Representative Position 1**

- Jim Henderson**  
(Prefers Republican Party)
- Jesse L. Young**  
(Prefers Republican Party)
- Adison Richards**  
(Prefers Democratic Party)
- 

**Legislative District 26  
State Representative Position 2**

- Tiffany Mitchell**  
(Prefers Democratic Party)
- Lori McPherson**  
(Prefers Democrat Party)
- Josh Smith**  
(States No Party Preference)
- Rachel Harter**  
(Prefers Republican Party)
- Michelle Caldier**  
(Prefers Republican Party)
- 

**Legislative District 35  
State Representative Position 1**

- Dan Griffey**  
(Prefers Republican Party)
- 

**Legislative District 35  
State Representative Position 2**

- Eric Onisko**  
(Prefers (GOP) Republican Party)
- Travis Couture**  
(Prefers Republican Party)
- James DeHart**  
(Prefers Democratic Party)
- 

**County Partisan Offices**

**County Commissioner District 1**

- Short and full 4-year term
- Christine Rolfes**  
(Prefers Democratic Party)
  -

**County Commissioner District 2**

- Jeff Coughlin**  
(Prefers Democratic Party)
- Sean Murphy**  
(Prefers Republican Party)
- Matt Macklin**  
(Prefers Democratic Party)
- Oran Root**  
(Prefers Republican Party)
- Stacey (Spencer) Smith**  
(Prefers Democratic Party)
- Paul Nuchims**  
(Prefers Abe Lincoln Democrat Party)
- 

**Judicial Nonpartisan Office**

**Supreme Court Justice Position 2**

- Todd A. Bloom**
- Sal Mungia**
- David R Shelvey**
- Dave Larson**
- 

**Local Measures**

**City of Bremerton  
Proposition No. 1**

**Emergency Medical Care and Services  
Tax Levy**

The City Council of the City of Bremerton adopted Resolution No. 3379 concerning a regular property tax levy under chapter 84.52 RCW. Will the City be authorized to impose regular property tax levies of \$0.50 or less per \$1,000 of assessed valuation for each of six consecutive years (2025-2030) to continue financing emergency medical care and services?

- Yes**
- No**

**Central Kitsap Fire and Rescue  
Proposition No. 1**

**Regular Property Tax Levy Lid Lift for  
Fire Protection & Emergency Medical  
Services**

The Board of Commissioners of Central Kitsap Fire and Rescue adopted Resolution No. 24-03 proposing an increase in the fire district's regular property tax levy. To fund fire protection and emergency medical services for six years, this proposition authorizes restoring the previous maximum levy rate of \$1.50 per \$1,000.00 of assessed valuation for collection in 2025 and sets the limit factor for each subsequent year at 100% plus up to 6% or the amount authorized under RCW 84.55.0101, subject to the limit of \$1.50, whichever is greater. The final year's levy dollar amount would be used to compute limitations for subsequent levies.

Should this proposition be approved?

- Yes**
- No**

**Kitsap County Fire Protection  
District No. 18  
Proposition No. 1**

**Emergency Medical Services Property  
Tax Levy**

The Board of Commissioners of Kitsap County Fire Protection District No. 18 (Poulsbo Fire Department) adopted Resolution No. 24-05 concerning a property tax levy to fund emergency medical services. For the purpose of providing emergency medical services (EMS), will Kitsap County Fire Protection District No. 18 be authorized to continue to impose regular property tax levies of \$0.50 or less per \$1,000.00 of assessed valuation for each of six consecutive years, with collection starting in 2025 and replacing the final year of the current EMS levy?

- Yes**
- No**

**North Kitsap Fire & Rescue  
Proposition No. 1**

**Emergency Medical Services Property  
Tax Levy**

The Board of Commissioners of North Kitsap Fire & Rescue adopted Resolution No. 2024-02 concerning a property tax levy to fund emergency medical services. For the purpose of providing emergency medical services (EMS), will North Kitsap Fire & Rescue be authorized to continue to impose regular property tax levies of \$0.50 or less per \$1,000.00 of assessed valuation for each of six consecutive years, with collection starting in 2025 and replacing the final year of the current EMS levy?

- Yes**
- No**

**North Mason Regional Fire Authority -  
Property Tax Levy for Fire Protection  
and Emergency Medical Services**

The Board of North Mason Regional Fire Authority adopted Resolution No. 24-01, concerning a proposition to maintain and adequately fund District operations. This proposition authorizes North Mason Regional Fire Authority to restore its regular property tax levy to \$1.11 per \$1,000.00 of assessed value to be assessed in 2024 and collected in 2025. The funds will be used to maintain and improve fire protection and emergency medical services, replace apparatus and equipment, and provide for firefighter safety. The maximum allowable levy in 2024 shall serve as the base for subsequent levy limitations as provided by chapter 84.55 RCW.

Should this proposition be approved?

- Levy...Yes**
- Levy...No**

**County Nonpartisan Office**

**Kitsap County  
Public Utility District No. 1  
Commissioner District 3**

- John Poppe**
- Heather Pauley**
- Richard Tift**
- 

**Local Measure**

**Bainbridge Island Metropolitan Park  
& Recreation District  
Proposition No. 1**

**Ray Williamson Pool Renovation  
Bonds**

The Board of Commissioners of the Bainbridge Island Metropolitan Park & Recreation District has adopted Resolution 2024-04, regarding financing the renovation of the Aquatic Center facilities. If approved, this proposition would authorize the District to renovate, rehabilitate, reconstruct, refurbish, expand, and/or undertake other improvements to the existing Aquatic Center, including the 54-year old Ray Williamson Pool and related capital facilities. It would authorize issuance of not more than \$10,000,000 of general obligation bonds maturing within no more than 20 years and the annual levy of excess property taxes to pay and retire such bonds, all as provided in Resolution 2024-04.

Should this proposition be approved?

- Yes**
- No**

**Election of Political Party  
Precinct Committee Officer**

**For this office only:** In order to vote for precinct committee officer, a partisan office, you must affirm that you are a Democrat or a Republican and may vote only for one candidate from the party you select. Your vote for a candidate affirms your affiliation with the same party as the candidate. This preference is private and will not be matched to your name or shared.

**PCO**